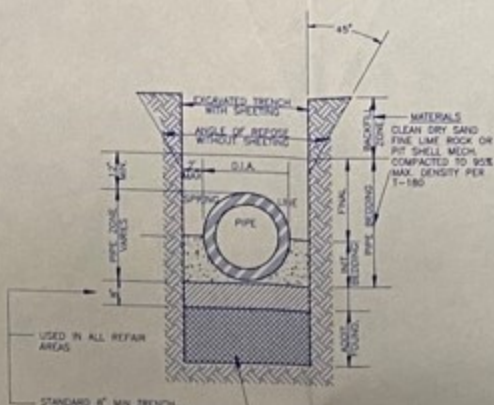
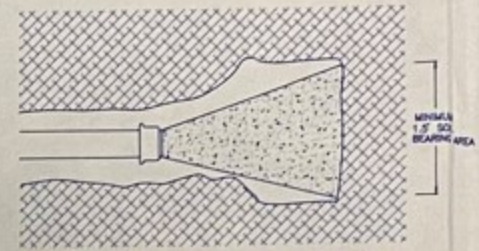


WATER SERVICE CONNECTION DETAIL
N.T.S.

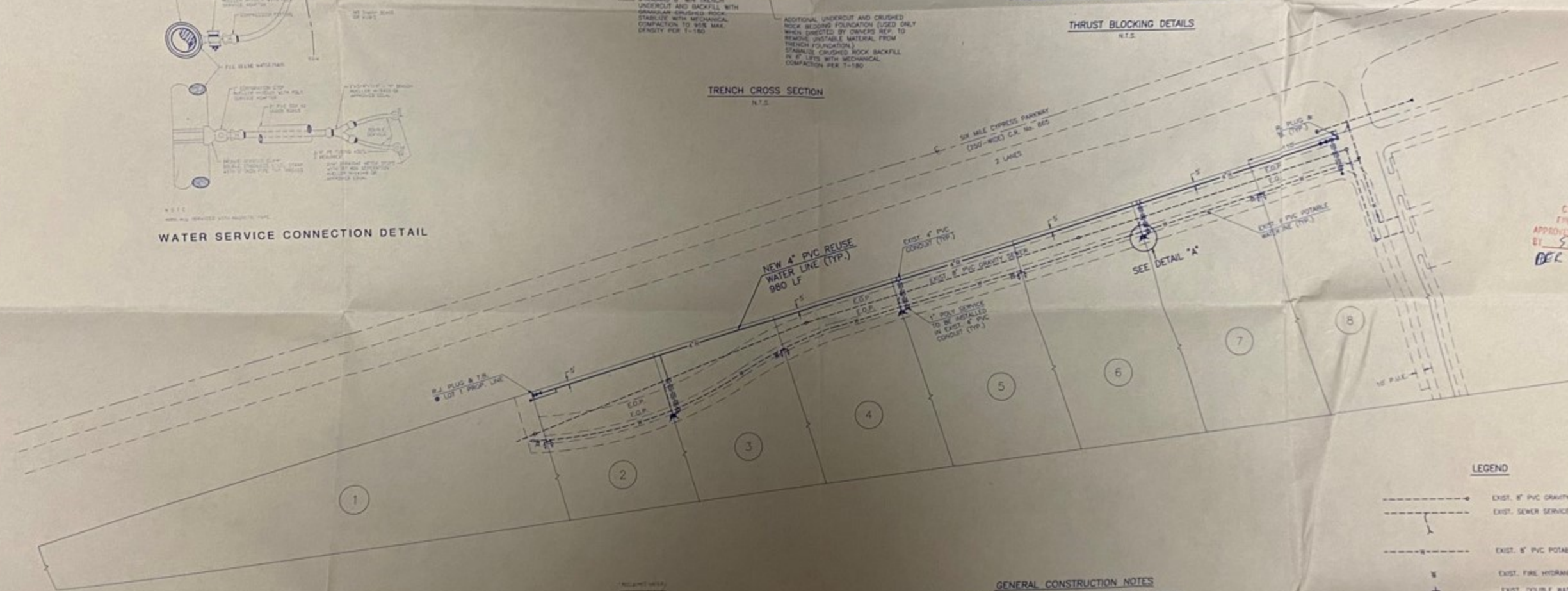


TRENCH CROSS SECTION
N.T.S.



THRUST BLOCKING DETAILS
N.T.S.

- THRUST BLOCKS SHALL BE POURED AGAINST UNDISTURBED MATERIAL. WHERE TRENCH WALL HAS BEEN DISTURBED, EXCAVATE ALL LOOSE MATERIAL AND EXTEND THRUST BLOCK TO UNDISTURBED MATERIAL.
- KEEP ALL JOINTS AND JOISTS FREE FROM CONCRETE WITH UTILITY.
- BACKFILL SHALL CONSIST ENTIRELY OF CLEAN SAND AND ROCK FRAGMENTS. ALL ROCK ENCOUNTERED SHALL BE REMOVED AND REPLACED WITH ACCEPTABLE MATERIAL.
- CONCRETE FOR THRUST BLOCKS SHALL HAVE A MINIMUM STRENGTH OF 2000 P.S.I. AFTER 28 DAYS.
- THRUST BLOCK SIZES COMPARED AT 100 P.S.I. PRESSURE AND 1000 P.C.F. SOIL BEARING CAPACITY.



CITY OF FORT MYERS
ENGINEERING DIVISION
APPROVED *[Signature]* DISAPPROVED
BY *[Signature]* DATE 5-5-93
Del. Permit signed per case

ENGINEERING
APR - 1 1993
CITY OF FORT MYERS

LEGEND

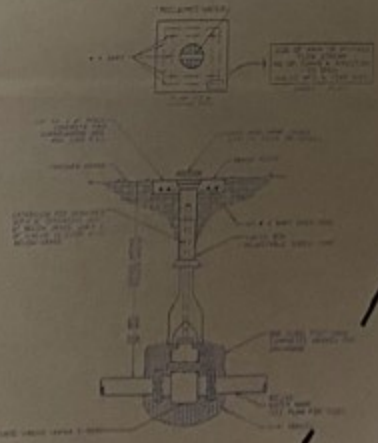
- > EXIST. 8" PVC GRAVITY SEWER AND MANHOLE
- EXIST. SEWER SERVICE
- EXIST. 8" PVC POTABLE WATER LINE
- EXIST. FIRE HYDRANT
- EXIST. DOUBLE WATER SERVICE W/BLOCKS
- CONCRETE THRUST BLOCK
- EXIST. 4" PVC CONDUIT
- NEW REUSE WATER METER
- 4" NEW 4" PVC REUSE WATER LINE
- GATE VALVE

GENERAL CONSTRUCTION NOTES

- CONTRACTOR TO VERIFY LOCATION AND ELEVATION OF ALL EXISTING UNDERGROUND UTILITIES PRIOR TO CONSTRUCTION. EXISTING WATER AND SEWER LINES ARE SHOWN TO APPROXIMATE LOCATIONS ONLY. CONTRACTOR SHALL INSURE THAT ALL REUSE WATER LINES MAINTAIN 3" HORIZONTAL AND ONE (1) FT. VERTICAL CLEARANCE FROM POTABLE WATER AND SEWER LINES. REUSE WATER LINES SHALL BE AT A MINIMUM DEPTH OF 18" UNDER FINISHED SURFACES AND 30" UNDER GROUND COVER.
- CONTRACTOR SHALL COORDINATE ALL CONNECTIONS TO OR RELOCATION OF EXISTING UTILITIES WITH APPROPRIATE UTILITY OWNERS.
- CONTRACTOR SHALL MAINTAIN & CURRENT AND UPDATED SET OF AS-BUILT DRAWINGS AT ALL TIMES AND PROVIDE ONE COPY TO THE ENGINEER UPON COMPLETION OF CONSTRUCTION.
- ALL REUSE WATERLINE CONSTRUCTION TO BE IN ACCORDANCE WITH THE CITY OF FORT MYERS STANDARDS AND ANY OTHER SPECIFICATIONS REQUIRED BY CONTRACT.
- ALL PIPE FOR REUSE WATER SHALL BE BROWN PVC CONFORMING TO THE REQUIREMENTS OF ASTM D-800 WITH DR 18, PRESSURE CLASS 150.
- ALL 4" POLYETHYLENE REUSE WATER SERVICES SHALL CONFORM TO THE REQUIREMENTS OF ASTM D-3350 WITH DR 9, PRESSURE CLASS 200.
- ALL PIPING BACKFILL SHALL BE COMPACTED IN STRICT ACCORDANCE WITH THE BIDDING DETAILS.



DETAIL A
N.T.S.



GATE VALVE DETAIL
N.T.S.

10461-10581 Six Mile Cypress

P-93030091

(10501 Six Mile Cypress)
APH

[Signature]
MAR 31 1993

REUSE WATERLINE INSTALLATION PLAN
SIX MILE CYPRESS COMMERCE PARK
LEE COUNTY, FLORIDA
Bean, Whitaker, Lutz & Barnes, Inc.
CONSULTING ENGINEERS AND SURVEYORS
13141-B HARBOR BOULEVARD
FORT MYERS, FLORIDA 33919
(813) 481-1331

DATE	PROJECT NO.	DESIGNED	DRAWN	CHECKED	SCALE	SHEET NO.	TOTAL SHEETS
3-30-93	RL25842	DM	DM	MLS	1"=80'	001 OF 1	4-45-25