

FOR LEASE



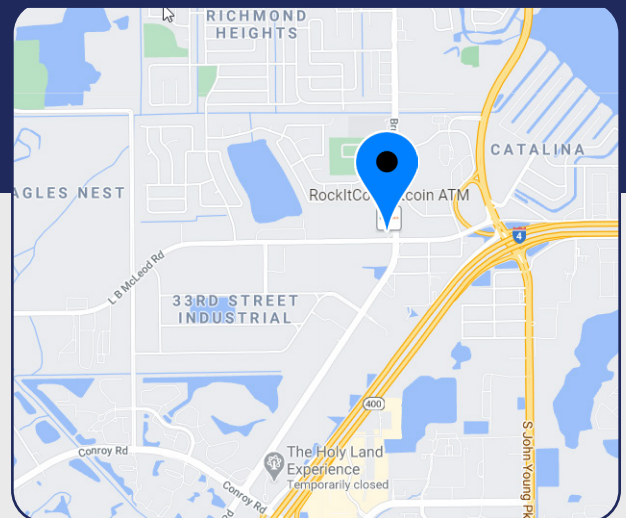
OFFICE/WAREHOUSE/FLEX

4065 - 4085 L.B. McLeod Road, Orlando, FL 32811

UNIT 4071-E

- > 4,005 SF
- > ±40% office space
- > Two grade level doors (12' x 12' and 11' wide x 12' tall)
- > Two restrooms
- > 3-phase at meter, panel is single-phase
- > Available for occupancy January 1, 2025
- > \$6,100.00/month plus sales tax and power

- ◇ Highly visible on L.B. McLeod Road
- ◇ Move-in ready
- ◇ 4/1,000 SF parking
- ◇ Minutes from Interstate-4 and John Young Parkway



Bill Bywater, CCIM

D 407.206.5736

O 407.206.7300

bill@bywater.com



1209 Edgewater Drive

Suite 100

Orlando, FL 32804

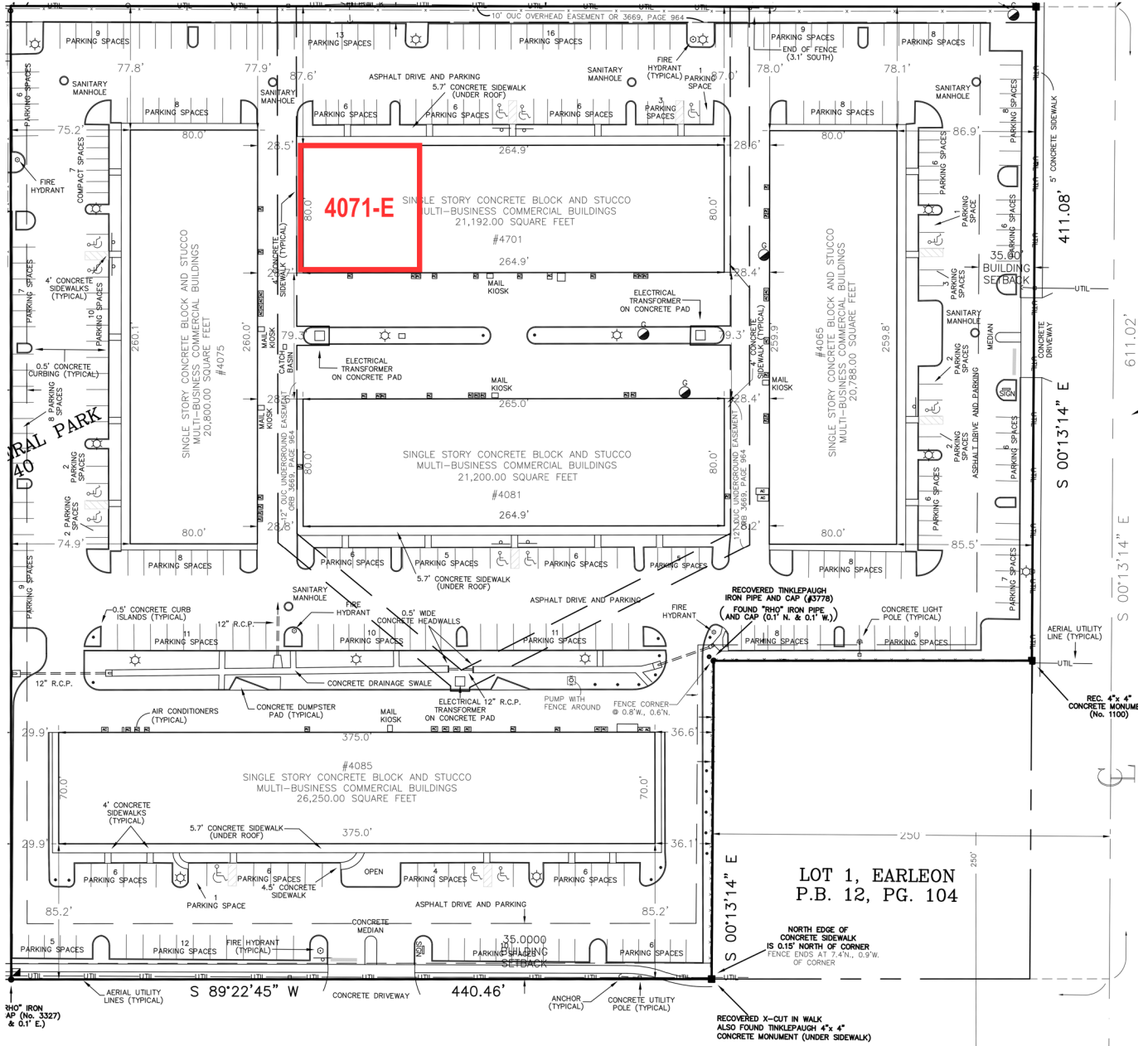
407.206.7300 Main

www.bywater.com

OFFICE/WAREHOUSE/FLEX

4065 - 4085 L.B. McLeod Road, Orlando, FL 32811

SITE PLAN



L.B. McLEOD ROAD



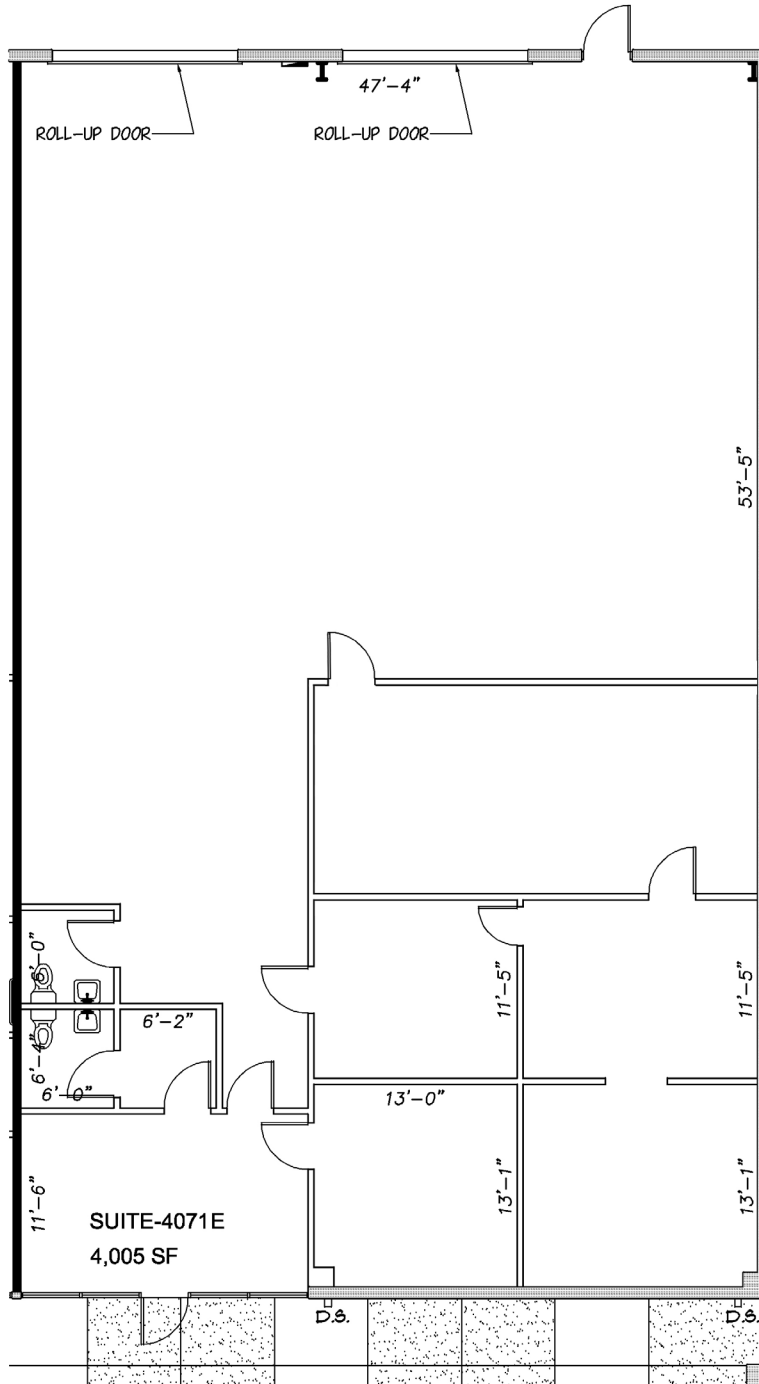
1209 Edgewater Drive, Suite 100 | Orlando, FL 32804 | 407.206.7300 | www.bywater.com

The information contained herein was obtained from sources deemed reliable and is assumed to be correct. It is not guaranteed by The Bywater Company.

OFFICE/WAREHOUSE/FLEX

4065 - 4085 L.B. McLeod Road, Orlando, FL 32811

UNIT 4071-E
4,005 SF

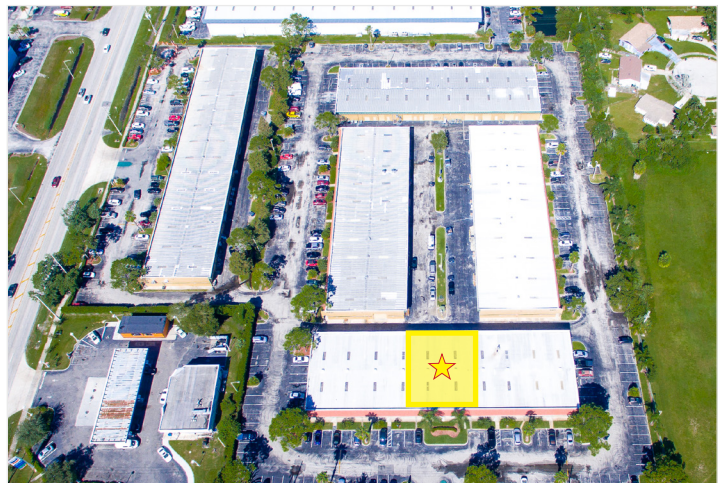


1209 Edgewater Drive, Suite 100 | Orlando, FL 32804 | 407.206.7300 | www.bywater.com

The information contained herein was obtained from sources deemed reliable and is assumed to be correct. It is not guaranteed by The Bywater Company.

OFFICE/WAREHOUSE/FLEX

4065 - 4085 L.B. McLeod Road, Orlando, FL 32811



1209 Edgewater Drive, Suite 100 | Orlando, FL 32804 | 407.206.7300 | www.bywater.com

The information contained herein was obtained from sources deemed reliable and is assumed to be correct. It is not guaranteed by The Bywater Company.