



for **LEASE**



13330 W. COLONIAL DRIVE

MEDICAL/PROFESSIONAL OFFICE

SUITE 120

INCREDIBLE LOCATION!

\$32/SF NNN

1,512 SF

Directly off Colonial Drive in Winter Garden

Across from Starbucks

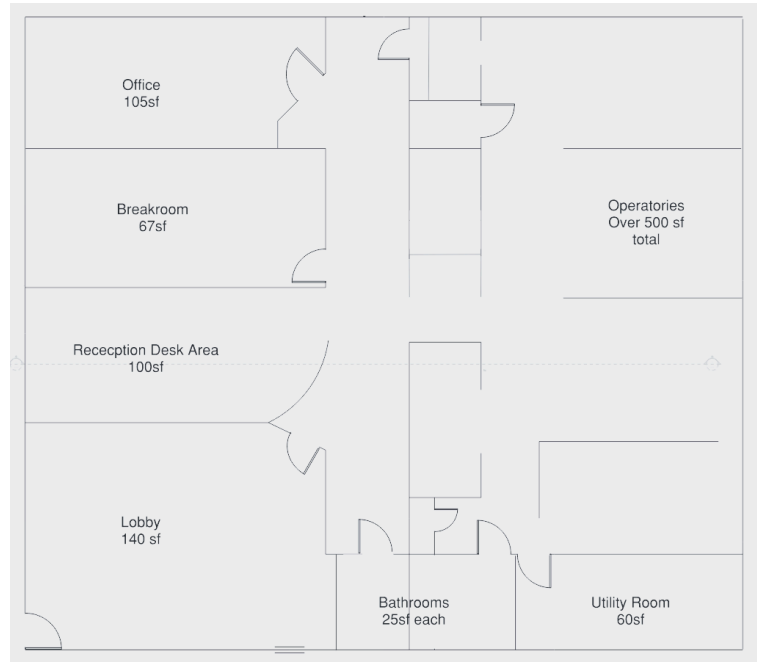
**For more information
please contact**

Arlene Martinez

646.842.0221

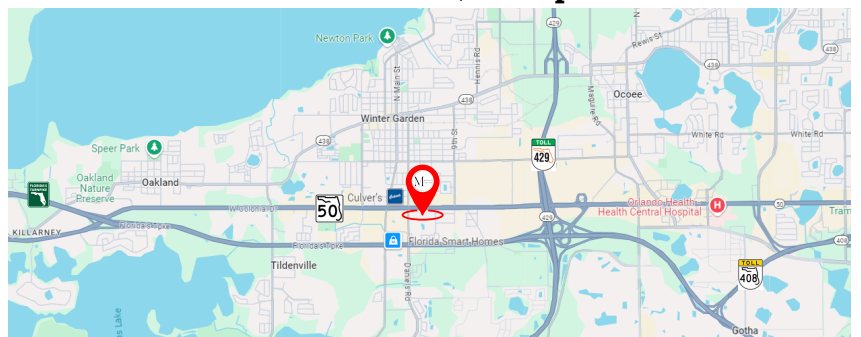
Arlene@martinezcommercial.com

WINDTREE PROFESSIONAL CENTER



*measurements are approximate

Centrally Located in Winter Garden
Within minutes to the 429, Turnpike and 408



- Spacious Reception
- Ample Parking
- Large windows
- Large Private office

**Ready for Medical Use or
Easily transfigured to Professional Office**

