

2742 Barney Court

McHenry, IL 60050

For Lease

MLS #12185366

INDUSTRIAL



INDUSTRIAL 6,035 SF

\$5,532/MO. \$11.PSF (MOD. GROSS)

INDUSTRIAL SPACE

6,035 SF Space with \pm 1,000 SF office section with two private offices, conference room, 2 baths. \pm 5,000 SF warehouse area with 12 \times 12 DID, 10 \times 10 dock and two baths. Monument signage available.

16' ceilings, fully air conditioned and heated. Zoned BP (business park). Part of a 20,395 SF multi-tenant masonry building in Adams Industrial Park.

Tenant pays gas, electric, water & garbage. Available 1/1/25.

Specifications

Building Size:	20,395 SF
Year Built:	2002
Office Size:	1000 SF
HVAC System:	GFA/ Central Air (fully)
Electrical:	200 amp 3 phase
Sprinklers:	No
Washrooms:	4
Ceiling Height:	16 ft
Parking:	15
DID's:	1 12 \times 12
Dock:	1
Sewer/Water:	City
Zoning:	BP
CAM & Taxes	Included
PIN #:	09-25-377-005

[CLICK HERE TO VIEW OUR WEBSITE](#)

No warranty or representation is made as to the accuracy of the foregoing information. Terms of sale or lease and availability are subject to change or withdrawal without notice. This document is for information purposes only. No offer of sub-agency is being made.



www.PremierCommercialRealty.com | 847.854.2300 | 9225 S. Route 31, Lake in the Hills, IL 60156

VP / Designated Managing Broker
Heather Schweitzer
HeatherS@PremierCommercialRealty.com
O: 847.854.2300 x15 C: 815.236.9816

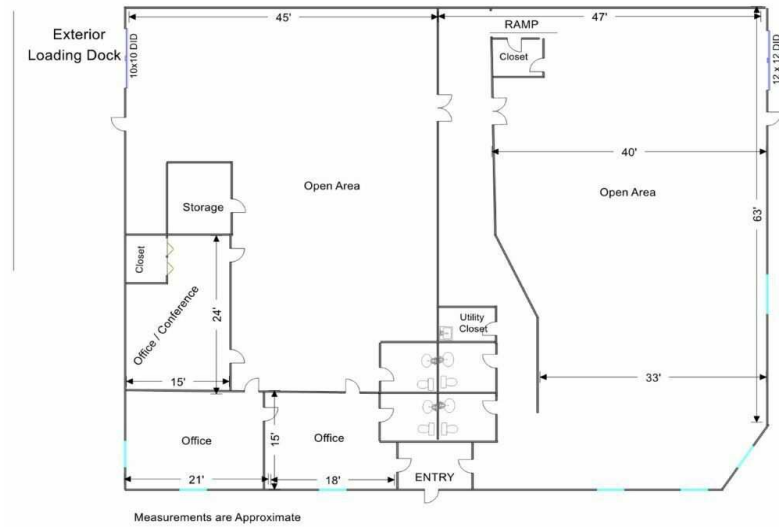
2742 Barney Court
McHenry, IL 60050

For Lease

INDUSTRIAL



UNIT 2742 6,035 SF



[CLICK HERE TO VIEW OUR WEBSITE](#)

No warranty or representation is made as to the accuracy of the foregoing information. Terms of sale or lease and availability are subject to change or withdrawal without notice. This document is for information purposes only. No offer of sub-agency is being made.



www.PremierCommercialRealty.com | 847.854.2300 | 9225 S. Route 31, Lake in the Hills, IL 60156

VP / Designated Managing Broker
Heather Schweitzer
HeatherS@PremierCommercialRealty.com
O: 847.854.2300 x15 C: 815.236.9816