

FOR LEASE

12,480 SF AVAILABLE
2180 PREMIER ROW
ORLANDO, FL



DIRECTORS ROW

CURRENCY DRIVE

12,480 SF
AVAILABLE

PREMIER ROW

FOUNDRY
COMMERCIAL

RENOVATIONS
COMPLETE Q1 2025

FOR LEASE

12,480 SF AVAILABLE
2180 PREMIER ROW
ORLANDO, FL



DOWNTOWN ORLANDO



12,480 SF
AVAILABLE

PREMIER ROW

NEW TPO ROOF

CURRENCY DRIVE

RENOVATIONS
COMPLETE Q1 2025

FOUNDRY
COMMERCIAL

FOR LEASE

12,480 SF AVAILABLE
2180 PREMIER ROW
ORLANDO, FL



SUITE INFORMATION

- 12,480SF AVAILABLE
- 20' CLEAR HEIGHT
- 5,050 SF OFFICE
- NEW TPO ROOF
- 4 DOCK HIGH DOORS
- SEALCOAT & STRIPED TRUCK COURT
- 22 PARKING SPACES
- 480V, 3-PHASE POWER
- Q1 2025 MAKEREADY COMPLETION

MARKETED BY:

JUSTIN RUBY

407.865.0311

JUSTIN.RUBY@FOUNDRYCOMMERCIAL.COM

JEROD FREELAND

321-591-5404

JEROD.FREELAND@FOUNDRYCOMMERCIAL.COM

JOEY WOODMAN

407.748.5888

JOEY.WOODMAN@FOUNDRYCOMMERCIAL.COM



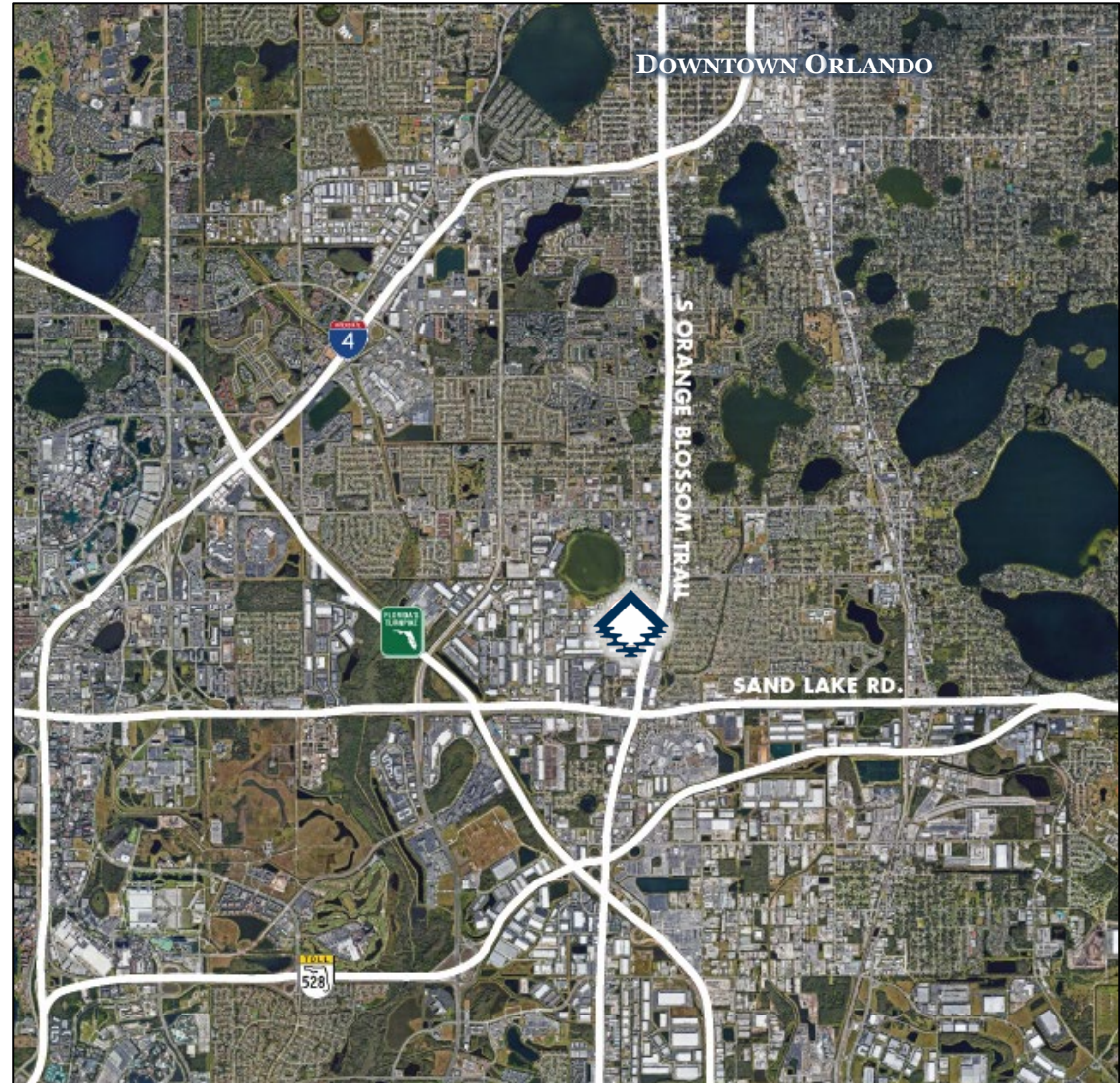
OWNED AND
MANAGED BY:



2180 PREMIER ROW

12,480 SQUARE FEET

AVAILABLE NOVEMBER 1ST, 2024



FOR LEASE

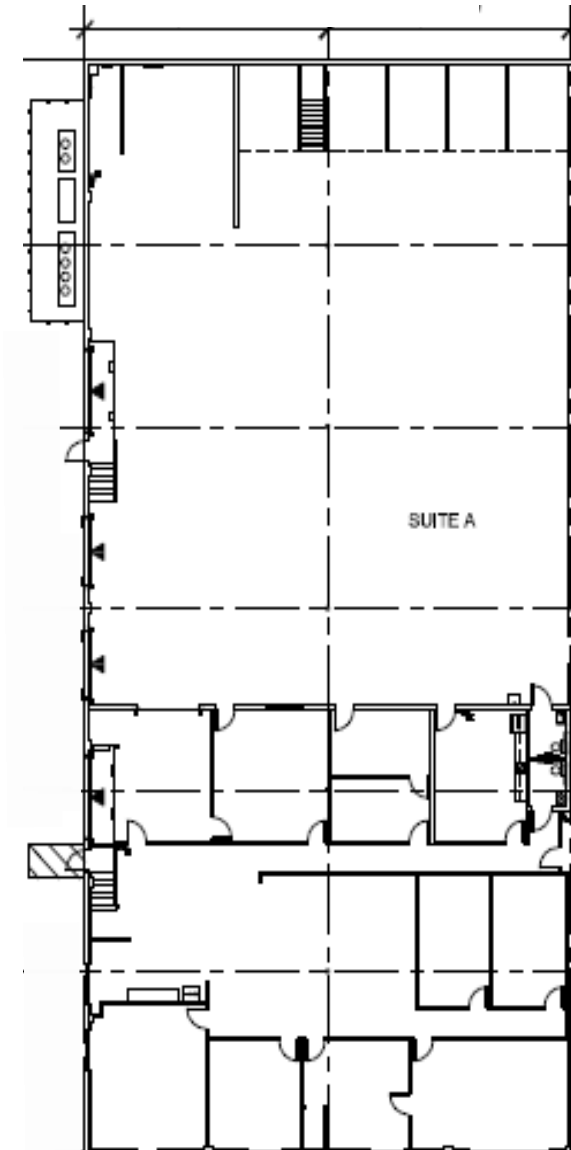
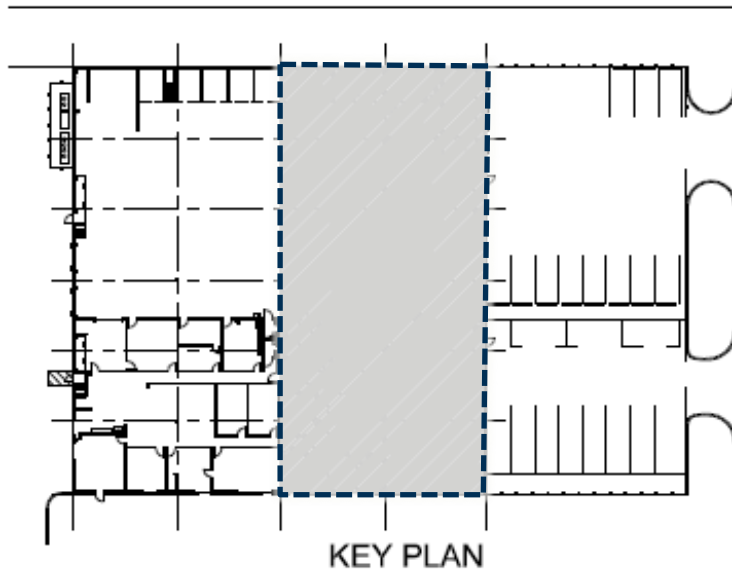
12,480 SF AVAILABLE
2180 PREMIER ROW
ORLANDO, FL



BUILDING FLOOR PLAN – SUITE A | 12,480 SF

ONGOING WORK (FULL WHITEBOX)

- LED LIGHTING (OFFICE)
- LED LIGHTING (WAREHOUSE)
- PAINT WAREHOUSE WALLS WHITE
- NEW CARPET THROUGHOUT OFFICE
- NEW FIXTURES THROUGHOUT SPACE
- NEW STRIPING IN PARKING LOT
- NEW TPO ROOF (20 YEAR WARRANTY)
- LANDSCAPING UPGRADES



FOR LEASE

12,480 SF AVAILABLE
2180 PREMIER ROW
ORLANDO, FL



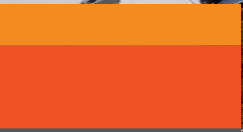
12,480 SF
AVAILABLE

NEW TPO ROOF

PREMIER ROW

DIRECTORS ROW

CURRENCY DRIVE



FOUNDRY
COMMERCIAL

RENOVATIONS
COMPLETE Q1 2025