



EXECUTIVE OFFICE SUITES FOR LEASE

110 W Indiana Ave, DeLand, FL 32720

Contact: Ben Kuykendall
Sales & Leasing Associate

E: Ben@FCPG.com
P: 407.872.0177 ext.131

Contact: Dan Van Nada, CCIM
Vice President of Brokerage Services

E: Dan@FCPG.com
P: 407.872.0177 ext.117

For Lease: 176 SF - 387 SF, Modified Gross

Availability:

| | |
|--|-----------------------|
| Suite 204: ± 233 RSF - \$580 / Month | Available Immediately |
| Suite 207: ± 387 RSF - \$1,030 / Month | Available Immediately |
| Suite 208: ± 217 RSF - \$575 / Month | Available Immediately |
| Suite 209: ± 176 RSF - \$475 / Month | Available Immediately |

Executive suites located in the Historic Landis Fish Building in the heart of the historic, award-winning Downtown DeLand

Second floor offices available with conference table, breakroom and bathroom shared among the building

Walking distance from Stetson University, Volusia County Courthouse and street-side retail

Rate includes all utilities and operating expenses; tenants can add janitorial service for \$50 / month

Ideal for any professional service users (accounting, attorney, insurance, etc.)

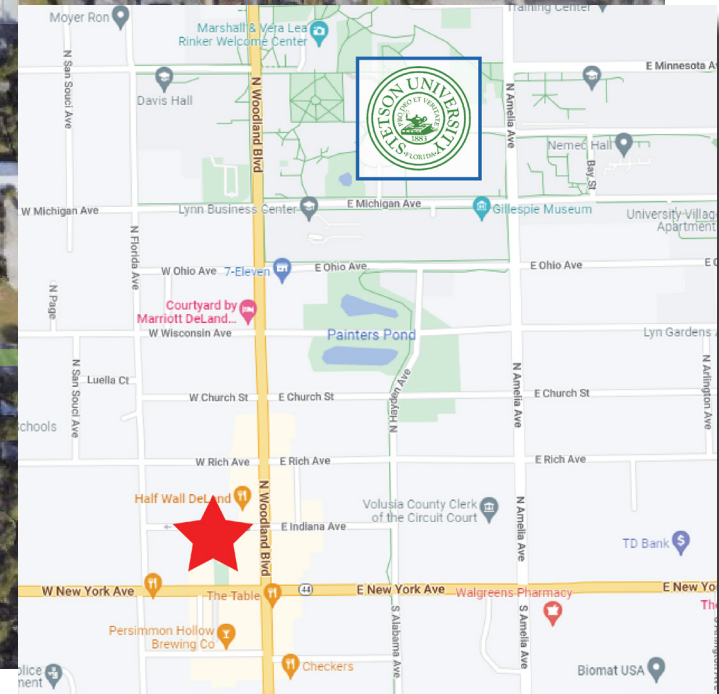
DEMOGRAPHICS

| | 2024 | 1 Mile | 3 Miles | 5 Miles |
|-------------------|------|----------|----------|-----------|
| Total Population | | 11,785 | 48,603 | 82,166 |
| Average HH Income | | \$70,013 | \$90,988 | \$100,224 |
| Total Households | | 4,269 | 18,856 | 32,672 |

615 E. Colonial Dr., Orlando, FL 32803 Phone: 407.872.0209 www.FCPG.com

Information furnished regarding the subject property is believed to be accurate, but no guarantee or representation is made. References to square footage are approximate. This offering is subject to errors, omissions, prior sale or lease or withdrawal without notice. ©2024 First Capital Property Group, Inc., Licensed Real Estate Brokers & Managers.

NEIGHBORHOOD



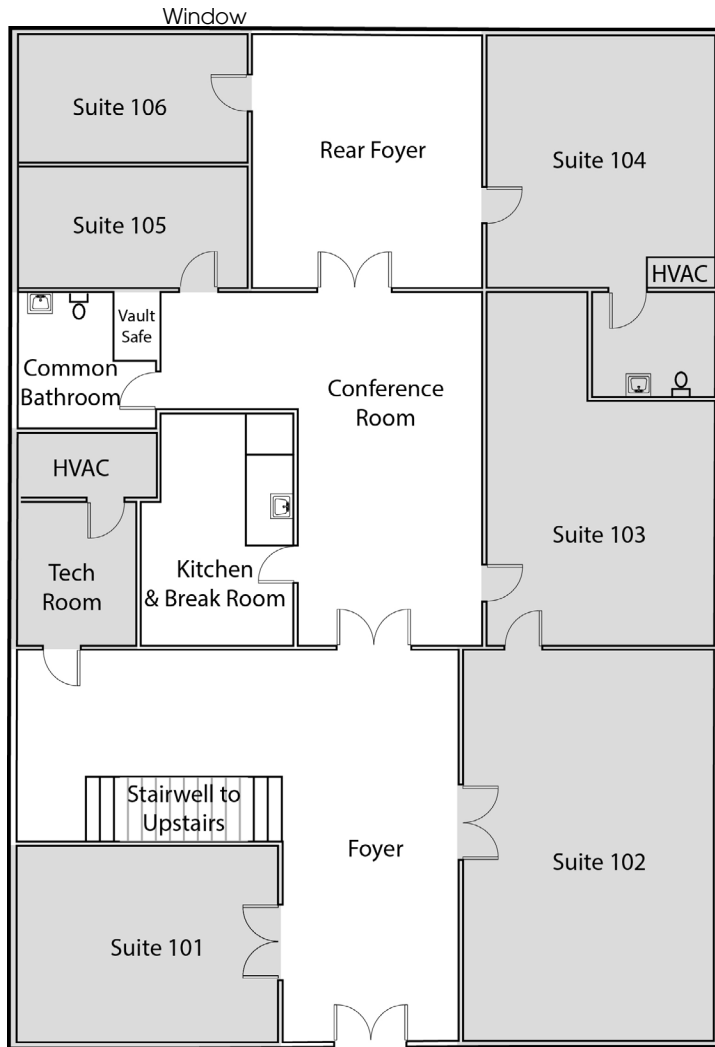
615 E. Colonial Dr., Orlando, FL 32803 Phone: 407.872.0209 www.FCPG.com

Information furnished regarding the subject property is believed to be accurate, but no guarantee or representation is made. References to square footage are approximate. This offering is subject to errors, omissions, prior sale or lease or withdrawal without notice. ©2024 First Capital Property Group, Inc., Licensed Real Estate Brokers & Managers.

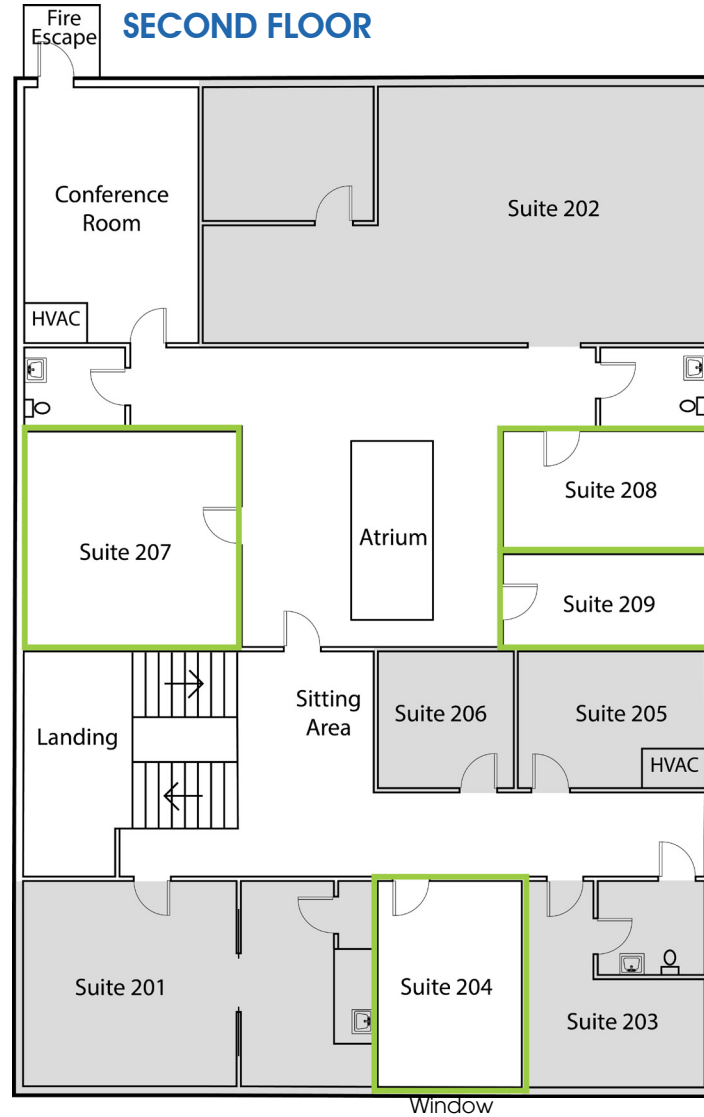


FLOORPLANS

FIRST FLOOR



SECOND FLOOR



■ 615 E. Colonial Dr., Orlando, FL 32803 ■ Phone: 407.872.0209 ■ www.FCPG.com ■

Information furnished regarding the subject property is believed to be accurate, but no guarantee or representation is made. References to square footage are approximate. This offering is subject to errors, omissions, prior sale or lease or withdrawal without notice. ©2024 First Capital Property Group, Inc., Licensed Real Estate Brokers & Managers.

SUITE PHOTOS

SUITE 204: ± 233 RSF



SUITE 207: ± 354 RSF



SUITE 208: ± 184 RSF



SUITE 209: ± 143 RSF



SHARED CONFERENCE ROOM



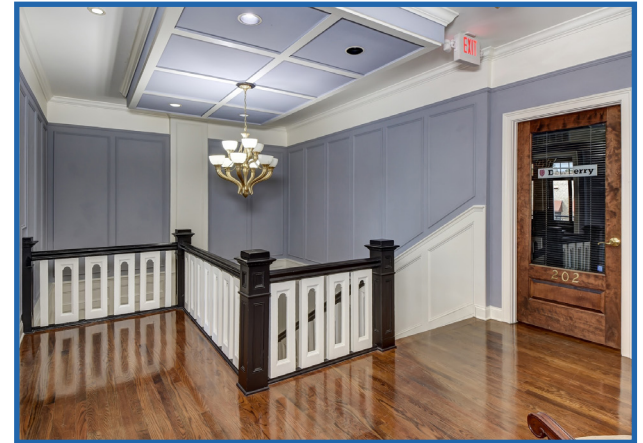
SHARED COMMON BATHROOM



■ 615 E. Colonial Dr., Orlando, FL 32803 ■ Phone: 407.872.0209 ■ www.FCPG.com ■

Information furnished regarding the subject property is believed to be accurate, but no guarantee or representation is made. References to square footage are approximate. This offering is subject to errors, omissions, prior sale or lease or withdrawal without notice. ©2024 First Capital Property Group, Inc., Licensed Real Estate Brokers & Managers.

ADDITIONAL PHOTOS



■ 615 E. Colonial Dr., Orlando, FL 32803 ■ Phone: 407.872.0209 ■ www.FCPG.com ■

Information furnished regarding the subject property is believed to be accurate, but no guarantee or representation is made. References to square footage are approximate. This offering is subject to errors, omissions, prior sale or lease or withdrawal without notice. ©2024 First Capital Property Group, Inc., Licensed Real Estate Brokers & Managers.