

▶ Client Relationship Driven
 ▶ Strong Community Involvement

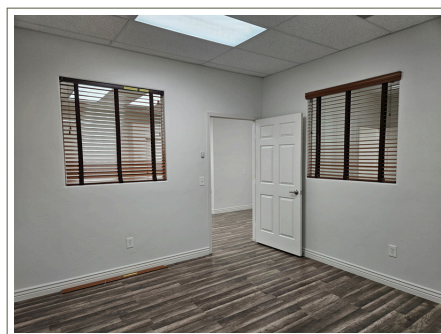
GRAND MESA
REAL ESTATE SERVICES
Commercial . Residential . Management



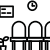


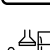
▶ Extensive Marketing Strategies
 ▶ Diverse Experience in Real Estate



MLS # 814410
 & 20242453

2731 Commercial Way, Montrose | \$2,900/ MO



-  1,888 Square Feet
-  Double Unit Suite with a lot of natural light
-  Large Reception/ Waiting Room
-  5 Large Private Offices
-  2 Restrooms
-  Kitchen Area

Signage on the building, plenty of parking off street. Available for immediate occupancy. Modified gross lease, tenant pays for their own utilities and internet. Call Broker for lease terms.



LUCINDA STANLEY, CCIM
 lucinda@grandmesaCRE.com
 970-201-2152

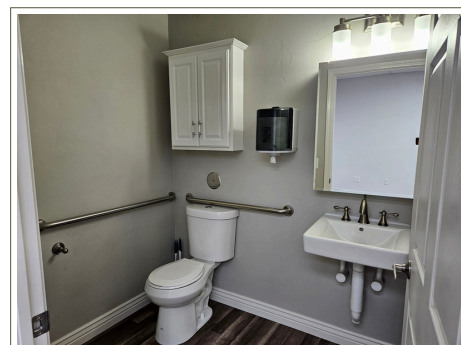
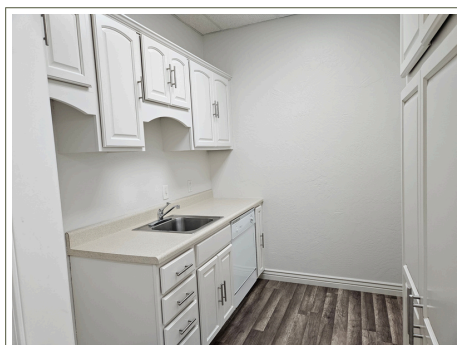
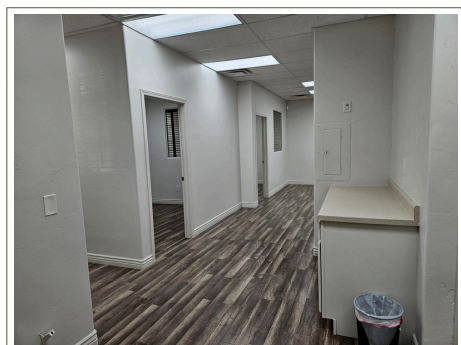


JOHN ANGELO, REALTOR
 john@angeloadvisors.com
 970-596-2492

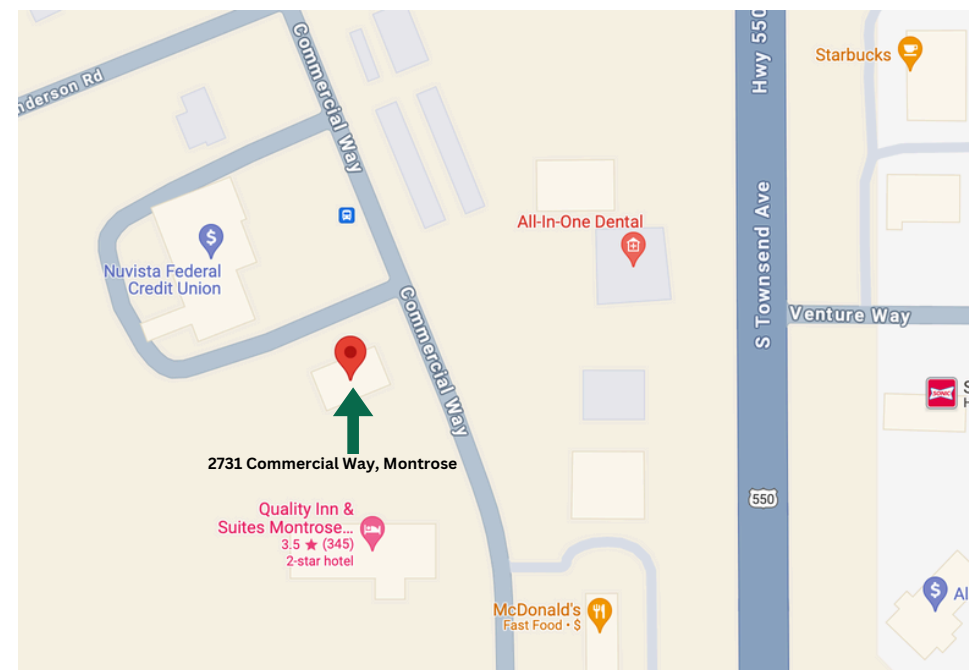
▶ Client Relationship Driven
▶ Strong Community Involvement

GRAND MESA
REAL ESTATE SERVICES
Commercial . Residential . Management

▶ Extensive Marketing Strategies
▶ Diverse Experience in Real Estate



2731 Commercial Way, Montrose | \$2,900/ MO



LUCINDA STANLEY, CCIM

lucinda@grandmesaCRE.com

970-201-2152



JOHN ANGELO, REALTOR

john@angeloadvisors.com

970-596-2492



537 MEEKER ST. DELTA, CO 81416
P.O BOX 735 DELTA, CO 81416



WWW.GRANDMESARES.COM

Information provided is deemed reliable but not guaranteed by the Brokers. It is advised to verify all information and/or obtain professional advice. Price and terms may change without notice.