



# US 19 RETAIL STOREFRONT FOR SALE OR LEASE

16302 SE HIGHWAY 19  
CROSS CITY, FL 32628

Gary Ralston, CCIM, SIOR, CRE, CPM, GRRP, FRICS

863.738.2246

[gary.ralston@svn.com](mailto:gary.ralston@svn.com)

David Lapham

517.990.4907

[david.lapham@svn.com](mailto:david.lapham@svn.com)

Trace Linder

863.287.3281

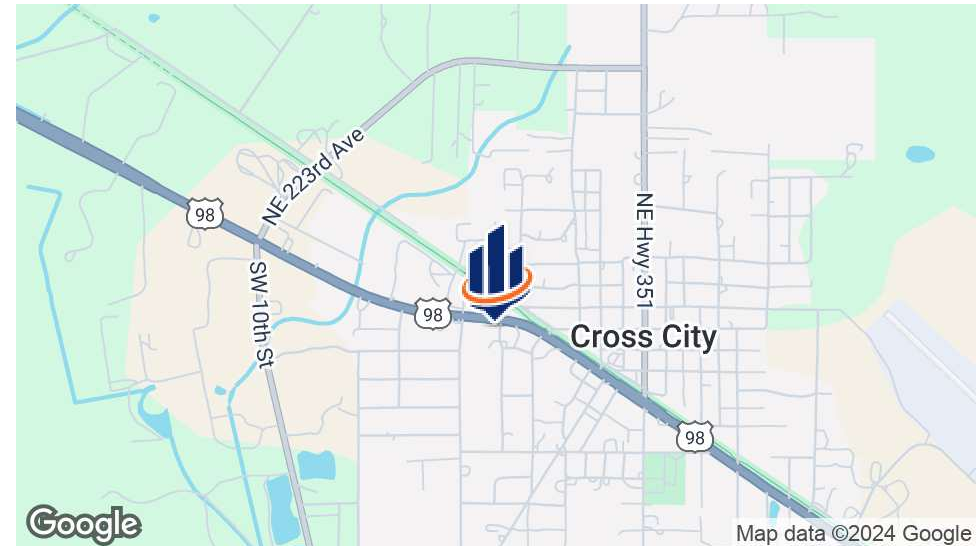
[trace.linder@svn.com](mailto:trace.linder@svn.com)

Sid Bhatt, CCIM, SIOR

704.930.8179

[sid.bhatt@svn.com](mailto:sid.bhatt@svn.com)

# Property Summary



## OFFERING SUMMARY

<b>Lease Rate:</b>	<b>\$7.00 SF/yr (NNN)</b>
Building Size:	8,272 SF
Lot Size:	0.32 Acres
Year Built:	1950
Renovated:	1990
Zoning:	CI- Commercial Intensive
Traffic Count:	9,000 ± Cars/Day
APN:	04-10-12-1808-0002-0010

## PROPERTY OVERVIEW

Introducing a prime opportunity for retail and free-standing building investors in Cross City, FL. This well-maintained 8,272 SF building presents a versatile opportunity for commercial ventures. Zoned CI-Commercial Intensive, this property supports a wide range of commercial uses, providing a strategic advantage for investors. The high-visibility property is ideally situated on a major retail corridor in Cross City, Florida. With an average daily traffic count of 9,000 ± vehicles, and prime frontage on U.S. Highway 19, this location offers exceptional exposure for businesses and ensures maximum visibility.

## PROPERTY HIGHLIGHTS

- 8,272 SF Retail storefront
- Zoned CI for versatile commercial use
- Prime location in Cross City for high visibility
- Ideal for retail or free-standing building ventures

# Property Details



## LOCATION INFORMATION

Street Address 16302 SE Highway 19  
City, State, Zip Cross City, FL 32628  
County Dixie

## BUILDING INFORMATION

Building Size 8,272 SF  
Number of Floors 1  
Year Built 1950  
Year Last Renovated 1990  
Roof Metal  
Free Standing Yes  
Number of Buildings 1

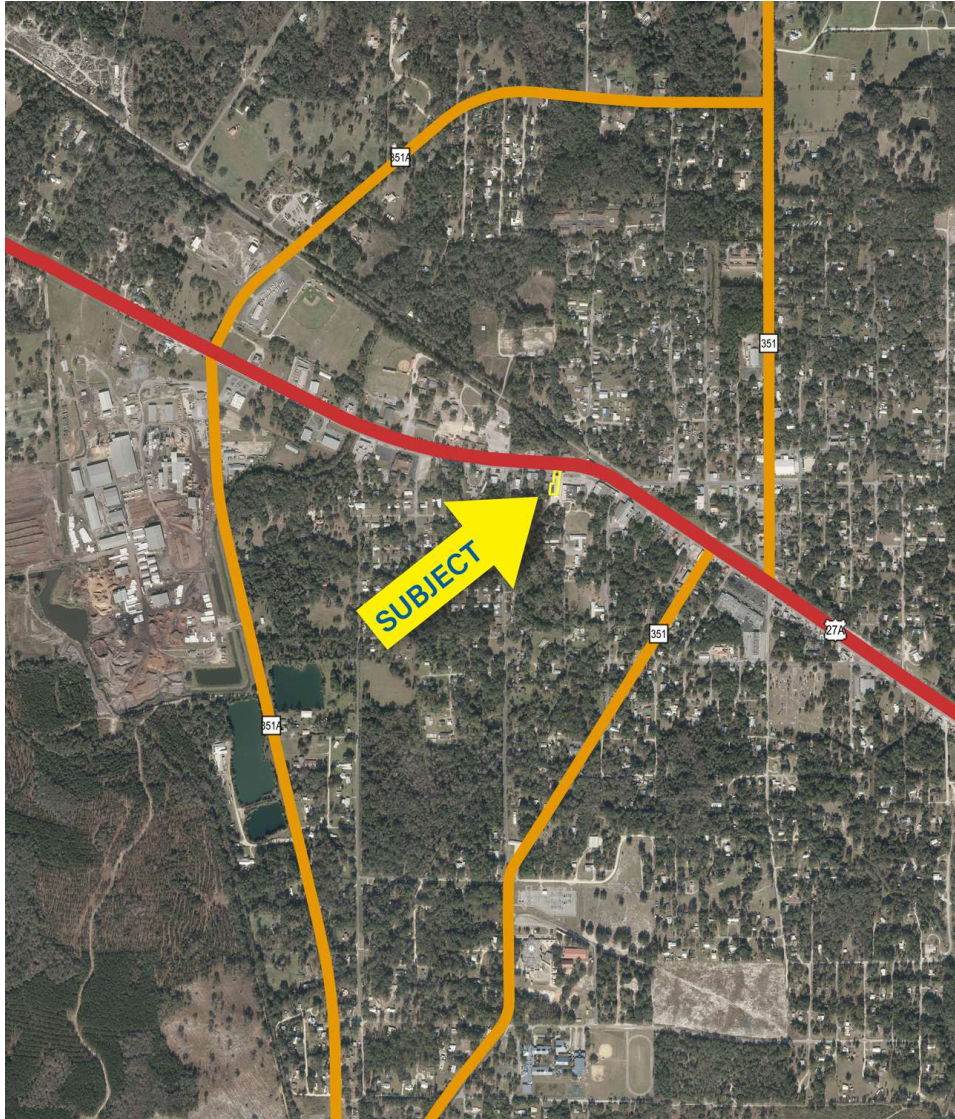
## PROPERTY INFORMATION

Property Type Retail  
Property Subtype Free Standing Building  
Zoning CI- Commercial Intensive  
Lot Size 0.32 Acres  
APN # 04-10-12-1808-0002-0010  
Lot Depth 2,120 ft  
Traffic Count 9000

## UTILITIES & AMENITIES

Handicap Access Yes  
Restrooms 2

# Location Description



## LOCATION DESCRIPTION

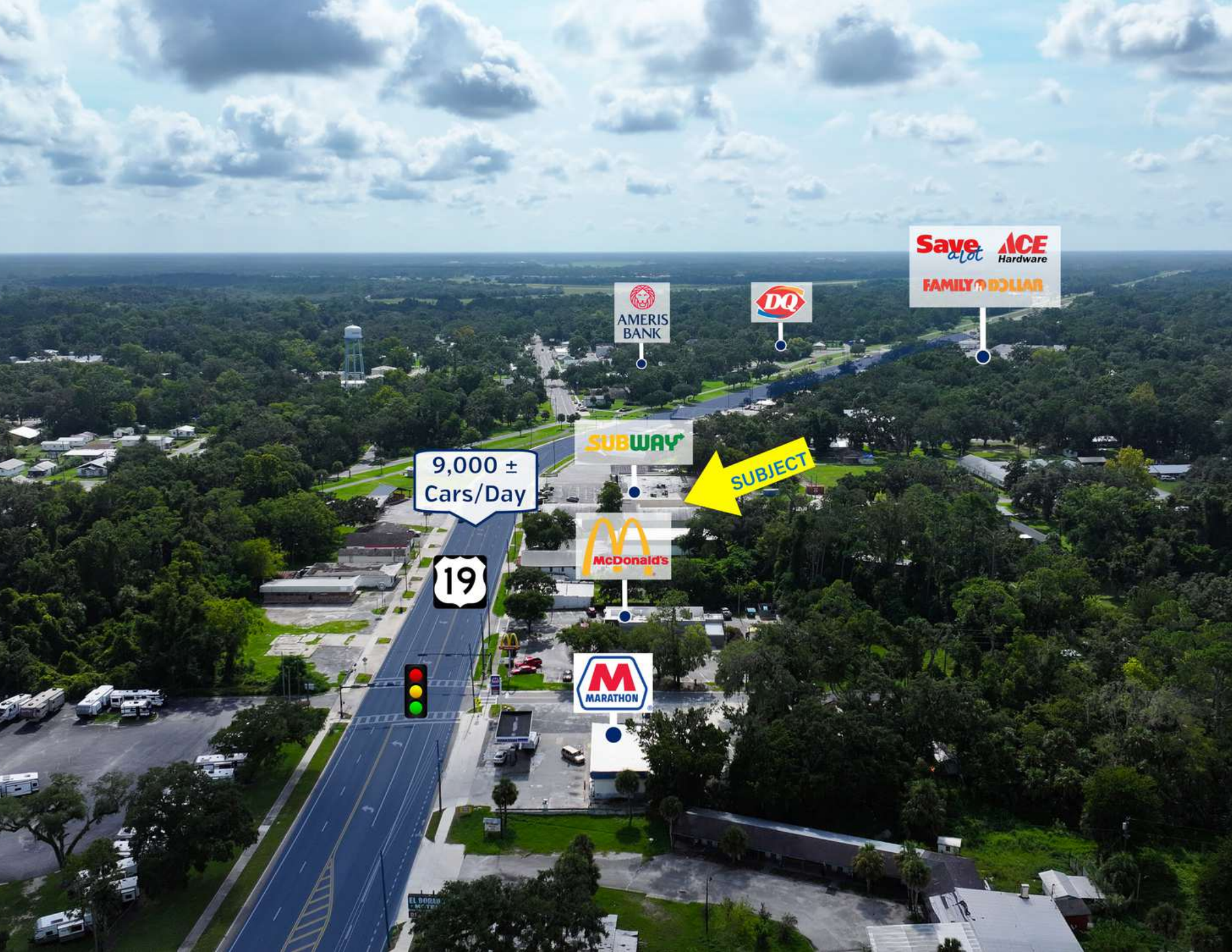
This retail property is located in the heart of Cross City, Florida, within a bustling retail corridor. Surrounded by popular national brands like Subway, McDonald's, Dollar General, Advanced Auto Parts and more, this location benefits from high foot traffic and crossover shopping.

The property is situated in a strong demographic and provides a stable customer base for retail businesses.

With its strategic location and proximity to a variety of established businesses, this property offers a promising investment opportunity for retail and free-standing building investors seeking a high-traffic location in a growing market.

# Retailer Map





Save a lot ACE Hardware  
FAMILY DOLLAR

AMERIS BANK

DQ

SUBWAY

9,000 ±  
Cars/Day

SUBJECT

McDonald's

19

MARATHON





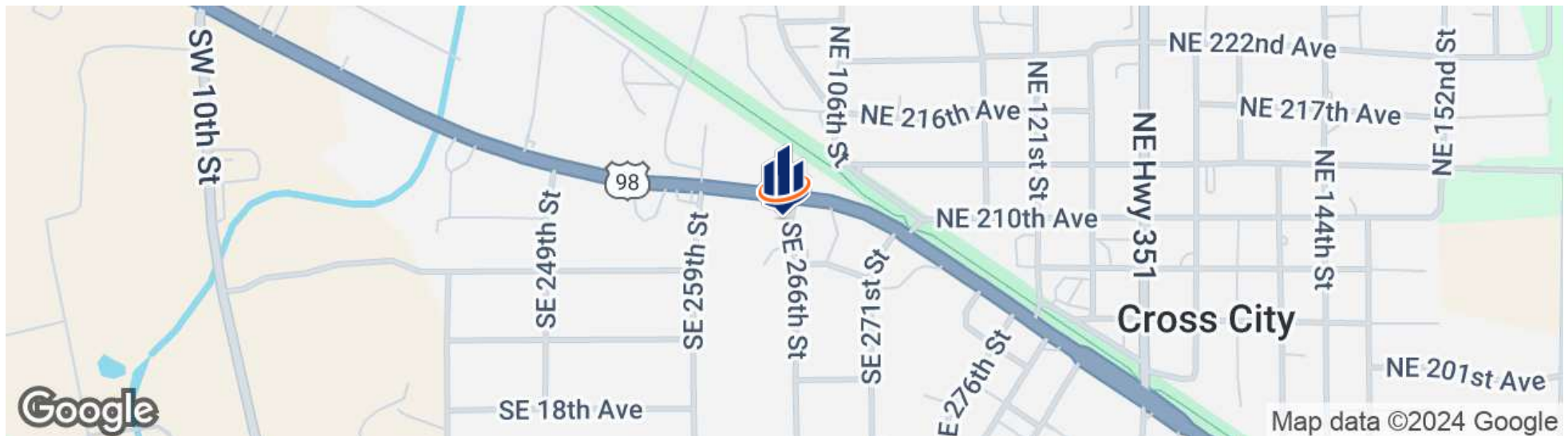
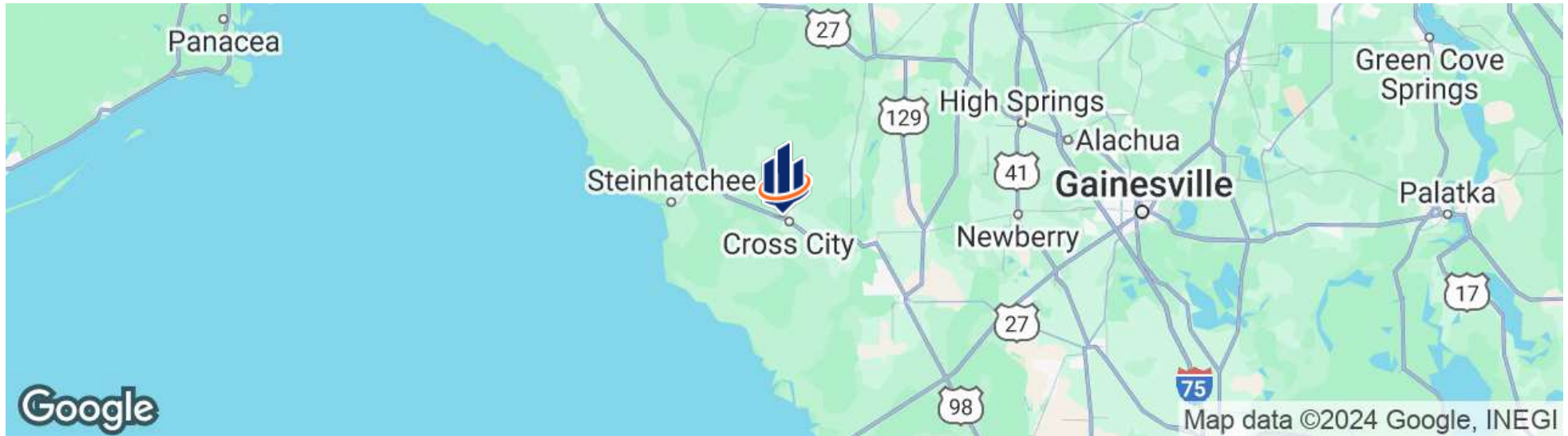
**DOLLAR GENERAL**



9,000 ±  
Cars/Day



# Regional & Location Map





# Benchmark Demographics



	1 Mile	3 Miles	5 Miles	5 Mins	10 Mins	15 Mins	Cross City	Cross City Zip	Dixie County	FL	US
Population	2,050	4,617	5,718	2,069	4,608	6,824	1,664	4,903	17,037	22,779,514	338,440,954
Households	798	1,182	1,596	773	1,308	2,249	643	1,297	6,495	9,084,882	130,716,571
Families	513	761	1,018	501	840	1,412	408	831	3,976	5,826,884	83,629,781
Average Household Size	2.11	2.68	2.55	2.27	2.60	2.48	2.51	2.51	2.37	2.45	2.53
Owner Occupied Housing Units	558	823	1,144	542	955	1,734	454	901	5,266	6,029,935	84,133,084
Renter Occupied Housing Units	240	359	452	231	353	515	189	396	1,229	3,054,947	46,583,487
Median Age	42.2	41.4	41.9	42.2	42.1	43.9	44.5	41.3	48.0	43.5	39.3
<b>Income</b>											
Median Household Income	\$49,115	\$51,777	\$47,930	\$51,351	\$46,976	\$43,934	\$47,659	\$50,057	\$45,455	\$74,715	\$79,068
Average Household Income	\$66,176	\$68,973	\$68,345	\$67,625	\$69,426	\$70,629	\$64,305	\$67,910	\$65,247	\$105,305	\$113,185
Per Capita Income	\$22,753	\$19,359	\$20,117	\$23,835	\$21,066	\$23,865	\$24,905	\$18,635	\$25,067	\$42,078	\$43,829
<b>Trends: 2024 - 2029 Annual Growth Rate</b>											
Population	-0.45%	-0.36%	-0.20%	-0.46%	-0.16%	0.19%	-0.71%	-0.35%	0.35%	0.93%	0.38%
Households	-0.28%	-0.27%	-0.05%	-0.26%	0.05%	0.48%	-0.34%	-0.26%	0.56%	1.15%	0.64%
Families	-0.31%	-0.29%	-0.08%	-0.32%	0.00%	0.45%	-0.90%	-0.39%	0.51%	1.12%	0.56%
Owner HHs	0.57%	0.48%	0.66%	0.51%	0.74%	1.01%	0.39%	0.72%	0.91%	1.66%	0.97%
Median Household Income	3.34%	3.70%	3.74%	3.32%	3.53%	2.22%	3.46%	3.67%	2.57%	3.25%	2.95%

- Over 6,800 people with a median age of 43.9 within a 15-minute drive from the property.
- Median household income of over \$51,000 within a 3-mile radius from the property.

# Benchmark Demographics



1 Mile 3 Miles 5 Miles 5 Mins 10 Mins 15 Mins Cross City Cross City Dixie FL US  
Zip County

## Households by Income

<\$15,000	13.50%	12.30%	10.7%	13.70%	11.50%	9.60%	11.40%	11.60%	9.00%	8.40%	8.60%
\$15,000 - \$24,999	10.80%	11.50%	12.2%	10.10%	12.20%	13.70%	11.70%	12.30%	14.20%	6.60%	6.30%
\$25,000 - \$34,999	15.20%	15.30%	16.1%	14.40%	14.40%	13.00%	16.30%	16.30%	12.00%	7.40%	6.70%
\$35,000 - \$49,999	11.00%	9.70%	12.3%	11.00%	14.10%	20.10%	12.10%	9.80%	19.30%	11.00%	10.10%
\$50,000 - \$74,999	11.80%	12.20%	12.1%	12.20%	11.60%	12.00%	9.30%	12.00%	15.80%	16.90%	15.70%
\$75,000 - \$99,999	11.50%	11.80%	11.3%	11.80%	11.30%	10.60%	12.40%	11.90%	12.30%	13.60%	12.80%
\$100,000 - \$149,999	20.90%	21.90%	19.5%	21.70%	18.30%	13.10%	21.50%	21.30%	11.40%	17.20%	17.60%
\$150,000 - \$199,999	4.10%	3.50%	3.6%	4.00%	3.80%	3.40%	4.70%	3.30%	3.50%	8.60%	9.50%
\$200,000+	1.10%	1.90%	2.1%	1.30%	2.80%	4.40%	0.60%	1.60%	2.50%	10.40%	12.60%

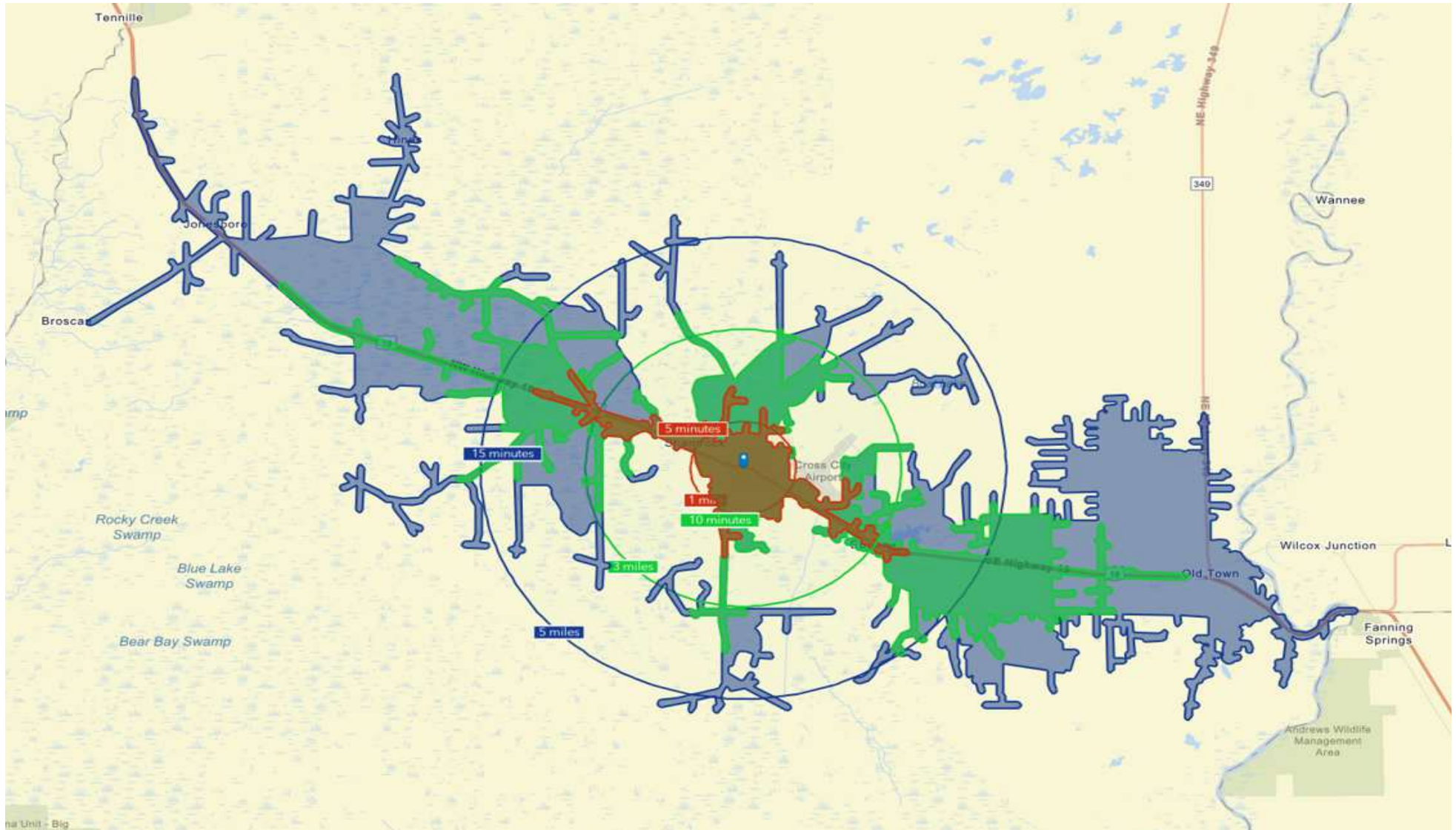
## Population by Age

0 - 4	4.40%	3.90%	3.90%	4.50%	3.90%	4.00%	4.40%	3.90%	4.20%	4.70%	5.50%
5 - 9	4.80%	4.20%	4.30%	5.00%	4.30%	4.40%	4.20%	4.10%	4.70%	5.10%	5.80%
10 - 14	5.70%	4.70%	4.90%	5.90%	5.00%	5.50%	4.50%	4.60%	5.40%	5.40%	6.00%
15 - 19	5.70%	4.60%	4.70%	5.80%	5.00%	5.10%	5.50%	4.40%	4.90%	5.80%	6.40%
20 - 24	6.20%	6.30%	6.20%	6.20%	6.30%	5.70%	6.50%	6.40%	4.90%	6.10%	6.80%
25 - 34	13.20%	15.80%	15.20%	12.80%	14.50%	12.60%	11.70%	16.20%	10.50%	12.30%	13.50%
35 - 44	14.20%	16.30%	15.80%	13.90%	15.50%	14.20%	13.90%	16.40%	12.10%	12.50%	13.30%
45 - 54	12.40%	13.60%	13.60%	12.20%	13.50%	12.90%	13.50%	13.70%	11.90%	12.10%	12.10%
55 - 64	14.00%	14.00%	14.10%	13.90%	14.00%	14.70%	15.00%	14.10%	16.00%	13.30%	12.30%
65 - 74	10.80%	9.70%	10.20%	11.00%	10.50%	12.20%	11.50%	9.40%	15.00%	12.30%	10.40%
75 - 84	5.90%	5.00%	5.20%	6.00%	5.40%	6.60%	6.10%	4.90%	8.50%	7.70%	5.70%
85+	2.70%	1.90%	1.90%	2.80%	2.00%	2.00%	3.00%	1.80%	2.10%	2.70%	2.00%

## Race and Ethnicity

White Alone	66.20%	65.90%	68.80%	67.20%	69.90%	76.50%	66.30%	65.70%	83.80%	56.50%	60.30%
Black Alone	26.20%	27.20%	24.30%	25.00%	23.60%	16.70%	26.10%	27.50%	8.90%	15.00%	12.50%
American Indian Alone	0.60%	0.50%	0.40%	0.60%	0.40%	0.40%	0.70%	0.50%	0.40%	0.50%	1.10%
Asian Alone	0.50%	0.40%	0.40%	0.60%	0.50%	0.50%	0.40%	0.40%	0.40%	3.20%	6.40%
Pacific Islander Alone	0.00%	0.10%	0.10%	0.00%	0.00%	0.00%	0.00%	0.10%	0.00%	0.10%	0.20%
Some Other Race Alone	1.50%	2.20%	2.10%	1.50%	1.80%	1.50%	2.00%	2.20%	1.40%	7.60%	8.80%
Two or More Races	4.90%	3.80%	3.80%	5.00%	3.90%	4.50%	4.40%	3.70%	5.20%	17.20%	10.70%
Hispanic Origin (Any Race)	4.90%	6.70%	6.60%	4.80%	6.00%	5.30%	6.30%	6.70%	4.70%	27.60%	19.60%

# Drive Time Map



# Additional Photos





**GARY RALSTON, CCIM, SIOR, CRE, CPM, CRRP, FRICS**

Managing Director/ Senior Advisor

[gary.ralston@svn.com](mailto:gary.ralston@svn.com)

Direct: 877.518.5263 x400 | Cell: 863.738.2246

## PROFESSIONAL BACKGROUND

Gary M. Ralston, CCIM, SIOR, SRS, CPM, CRE, CLS, CDP, CRX, CRRP, FRICS is a Partner and Senior Advisor of SVN Saunders Ralston Dantzler Real Estate in Lakeland, FL – the premier commercial services provider in Central Florida.

Gary is a recognized subject matter expert on retail and commercial properties, a successful real estate developer, investor, and group investment sponsor.

From the early 1990s through 2004, Gary was the president and member of the board of directors at Commercial Net Lease Realty, Inc. [NYSE:NNN] - the industry leader in single-tenant, net-leased, corporate real estate. During that time, he guided the company's growth from less than \$15 million in real estate assets to over \$1.5 billion.

Gary holds many designations including the Certified Commercial Investment Member [CCIM], Society of Industrial and Office Realtors [SIOR], Specialist in Real Estate Securities [SRS], Certified Property Manager [CPM], Counselor of Real Estate [CRE], Certified Leasing Specialist [CLS], Certified Development, Design, and Construction Professional [CDP], Certified Retail Property Executive [CRX], Certified Retail Real Estate Professional [CRRP] and Fellow of the Royal Institute of Chartered Surveyors [FRICS]. He is also a Florida licensed real estate broker and certified building contractor.

Gary is a senior instructor for the CCIM Institute and a member of the board of directors of CCIM Technology. He is also a member of the Urban Land Institute [ULI], the International Council of Shopping Centers [ICSC], and the Commercial Real Estate Development Association [NAIOP].

Gary holds a Master's in Real Estate and Construction Management from the University of Denver. He is also an adjunct faculty member at Florida Southern College and the University of Florida. Gary was inducted as a Hoyt Fellow (<http://hoytgroup.org/hoyt-fellows/>) in 2001. Gary is a member of the Business Panel of the Federal Reserve Bank of Atlanta.

Gary is recognized as the most accredited commercial real estate practicing professional in the nation.



## DAVID LAPHAM

Associate Advisor

david.lapham@svn.com

Direct: 877.518.5263 x491 | Cell: 517.990.4907

### PROFESSIONAL BACKGROUND

David Lapham is an Associate Advisor at SVN | Saunders Ralston Dantzler Real Estate in Lakeland, Florida.

With a focus on Florida's sod industry, David brings a fresh and innovative approach to the profession. Originally from Michigan, David relocated to Florida in 2008 and began an impactful journey in land management and technology.

At the age of 17, David enlisted in the Army, an experience that has profoundly shaped his work ethic and leadership style. The military instilled in him a strong sense of discipline and adaptability, traits he later applied to his academic and professional pursuits.

David's educational journey led him to Southeastern University, where he earned a degree in Communications. This education, combined with his military experience, has been instrumental in developing his exceptional communication skills, which are essential for relationship-building within the real estate industry.

However, David truly shines at the intersection of technology and agriculture. With a background in software engineering, he has been able to effectively apply technological solutions within the sod industry. Through these advancements, David streamlined operations and brought a new level of efficiency and insight into sod management practices.

David's contributions within the sod industry are not just enhancing current practices but are also paving the way for future advancements. As an advisor at SVN, David will continue making waves within Florida's land and commercial real estate industry.

David specializes in:

- Sod Farms
- Land



## TRACE LINDER

Associate Advisor

[trace.linder@svn.com](mailto:trace.linder@svn.com)

Direct: **877.518.5263 x463** | Cell: **863.287.3281**

FL #SL3562516

## PROFESSIONAL BACKGROUND

Trace Linder is an Associate Advisor at SVN | Saunders Ralston Dantzler Real Estate in Lakeland, Florida.

Trace is a licensed real estate sales associate based in Tampa, FL. As a fourth-generation Floridian raised in the Lakeland area, Trace has strong ties to the heart of Florida's cattle and citrus country. He is an avid outdoorsman with a passion for wildlife, conservation, and most importantly the land.

Trace earned his Bachelor of Science degree from the University of Florida's Agricultural Operations Management program before embarking on a twelve-year career in construction equipment sales for one of the leading Caterpillar machinery dealerships in the United States. His sales and management experience later led him to become the North American General Manager for an international construction equipment manufacturer. Throughout his career in sales and customer relations, Trace has always prioritized the needs of his clients.

In addition to his professional accomplishments, Trace is a Caterpillar Six Sigma Black Belt and an active member of several organizations dedicated to wildlife conservation, including Ducks Unlimited, The National Wild Turkey Federation, and Captains for Clean Water. He is also the Chairman of Conservation Florida's Central Florida Advisory Board.

Trace Specializes in:

- Recreational & Hunting Land
- Ranch & Agricultural Land
- Commercial & Industrial



**SID BHATT, CCIM, SIOR**

Senior Advisor

sid.bhatt@svn.com

Direct: 877.518.5263 x484 | Cell: 704.930.8179

## PROFESSIONAL BACKGROUND

Sid Bhatt, CCIM, SIOR is a Senior Advisor at SVN | Saunders Ralston Dantzler Real Estate operating out of Tampa, Florida.

An expert in his field, Sid primarily focuses on managing investment sales, leasing, and property management in the Tampa Bay area. He specializes in critical industrial real estate assets with a focus on 3rd party logistics, cold storage, life science, and sale leasebacks. With over 15 years of commercial real estate experience, Sid has achieved a career sales volume close to \$100 million, fostering client relationships with Lightstone, EB5 United, L&M Development, Switzenbaum & Associates, Crossharbor Capital, CanAM, Big River Steel, Strand Capital, Dollar General & CleanAF Operations, Inc.

In 2008, Sid began his commercial brokerage career in the Carolinas with Coldwell Banker and later with NNNet Advisors, Marcus & Millichap, and eventually the SVN Commercial Advisory Group. Now, Sid has seamlessly transitioned his expertise and deep market insights by joining SVN | Saunders Ralston Dantzler Real Estate.

Since the start, Sid has proven to be an effective deal manager who has strategically penetrated key markets in single & multi-tenant assets through his relationships with developers, private client capital, and overseas investors. He has a strong history of working in investment banking with private placement transactions for accredited investors in structured real estate bonds.

Prior to becoming a commercial broker, Sid worked for over 20 years in sales and marketing management with Hewlett Packard/Agilent Technologies. He was instrumental in implementing several corporate real estate projects, namely the Centers of Excellence in CA, DE, and across the US and Canada. Sid also holds an MBA from Fordham University, NY, and a Certificate of Professional Development from the University of Pennsylvania – The Wharton School.

Sid was awarded the coveted CCIM [Certified Commercial Investment Member] designation in 2010 and the SIOR [Society of Industrial & Office Realtors] in 2022. He is involved in the following charities : DNS Relief Fund, Samaritan's Purse and Gideons International.

Sid Bhatt specializes in:

- Industrial
- Retail
- Office





# ONE OF AMERICA'S BEST BROKERAGES



One of America's  
Best Brokerages



APEX 2022 Top  
National Producer



Most Influential  
Business Leaders



Largest Commercial  
Real Estate Brokers  
in Tampa Bay



Ranked 210 on Inc.  
5000 Regional List

# Disclaimer



The material contained in this Offering Memorandum is furnished solely for the purpose of considering the purchase of the property within and is not to be used for any other purpose. This information should not, under any circumstances, be photocopied or disclosed to any third party without the written consent of the SVN® Advisor or Property Owner, or used for any purpose whatsoever other than to evaluate the possible purchase of the Property.

The only party authorized to represent the Owner in connection with the sale of the Property is the SVN Advisor listed in this proposal, and no other person is authorized by the Owner to provide any information or to make any representations other than contained in this Offering Memorandum. If the person receiving these materials does not choose to pursue a purchase of the Property, this Offering Memorandum must be returned to the SVN Advisor.

Neither the SVN Advisor nor the Owner make any representation or warranty, express or implied, as to the accuracy or completeness of the information contained herein, and nothing contained herein is or shall be relied upon as a promise or representation as to the future representation of the Property. This Offering Memorandum may include certain statements and estimates with respect to the Property. These Assumptions may or may not be proven to be correct, and there can be no assurance that such estimates will be achieved. Further, the SVN Advisor and the Owner disclaim any and all liability for representations or warranties, expressed or implied, contained in or omitted from this Offering Memorandum, or any other written or oral communication transmitted or made available to the recipient. The recipient shall be entitled to rely solely on those representations and warranties that may be made to it in any final, fully executed and delivered Real Estate Purchase Agreement between it and Owner.

The information contained herein is subject to change without notice and the recipient of these materials shall not look to Owner or the SVN Advisor nor any of their officers, employees, representatives, independent contractors or affiliates, for the accuracy or completeness thereof. Recipients of this Offering Brochure are advised and encouraged to conduct their own comprehensive review and analysis of the Property.

This Offering Memorandum is a solicitation of interest only and is not an offer to sell the Property. The Owner expressly reserves the right, at its sole discretion, to reject any or all expressions of interest to purchase the Property and expressly reserves the right, at its sole discretion, to terminate negotiations with any entity, for any reason, at any time with or without notice. The Owner shall have no legal commitment or obligation to any entity reviewing the Offering Memorandum or making an offer to purchase the Property unless and until the Owner executes and delivers a signed Real Estate Purchase Agreement on terms acceptable to Owner, in Owner's sole discretion. By submitting an offer, a prospective purchaser will be deemed to have acknowledged the foregoing and agreed to release the Owner and the SVN Advisor from any liability with respect thereto.

To the extent Owner or any agent of Owner corresponds with any prospective purchaser, any prospective purchaser should not rely on any such correspondence or statements as binding Owner. Only a fully executed Real Estate Purchase Agreement shall bind the property and each prospective purchaser proceeds at its own risk.



For more information visit [www.SVNsaunders.com](http://www.SVNsaunders.com)

**HEADQUARTERS**

1723 Bartow Rd  
Lakeland, FL 33801  
863.648.1528

**ORLANDO**

605 E Robinson Street, Suite 410  
Orlando, Florida 32801  
386.438.5896

**NORTH FLORIDA**

356 NW Lake City Avenue  
Lake City, Florida 32055  
352.364.0070

**GEORGIA**

203 E Monroe Street  
Thomasville, Georgia 31792  
229.299.8600

**ARKANSAS**

112 W Center St, Suite 501  
Fayetteville, Arkansas 72701  
479.582.4113

©2024 Saunders Ralston Dantzler Real Estate. All SVN® Offices Independently Owned and Operated SVN | Saunders Ralston Dantzler Real Estate is a full-service land and commercial real estate brokerage representing buyers, sellers, investors, institutions, and landowners since 1996. We are recognized nationally as an authority on all types of land, including agriculture, ranch, recreation, and residential development. Our commercial real estate services include property management, leasing and tenant representation, valuation, business brokerage, and advisory and counseling services for office, retail, industrial, and multifamily properties. Our firm also features an auction company, a forestry division, international partnerships, and extensive expertise in conservation easements. Located in Florida, Georgia, and Alabama, we provide proven leadership and collaborative expertise backed by the strength of the SVN® global platform.

