

EXECUTIVE SUMMARY

• 3540 Jupiter Blvd SE Palm Bay, FL 32909



OFFERING SUMMARY

Available SF:	800 SF
Lease Rate:	\$1,570.00 per month (\$125/mo NNN)
Lot Size:	0.77 Acres
Year Built:	2009
Building Size:	6,893 SF
Zoning:	NC

PROPERTY OVERVIEW

Welcome to an exciting opportunity in the heart of Palm Bay, Florida! This commercial space, located at 3540 Jupiter Blvd SE, Unit 3, offers a prime location for businesses seeking a strategic presence in this thriving community.

LOCATION OVERVIEW

Surrounding the property is a robust residential area, ensuring a steady flow of potential customers.

This location is in close proximity to numerous neighborhoods, making it an attractive option for businesses looking to tap into the local market.

VITOR DE SOUSA, CCIM

Retail Sales & Leasing
321.722.0707 X15
vitor@teamlbr.com

JEFFERY T. ROBISON, CCIM

President | Broker
321.722.0707 X13
jeff@teamlbr.com

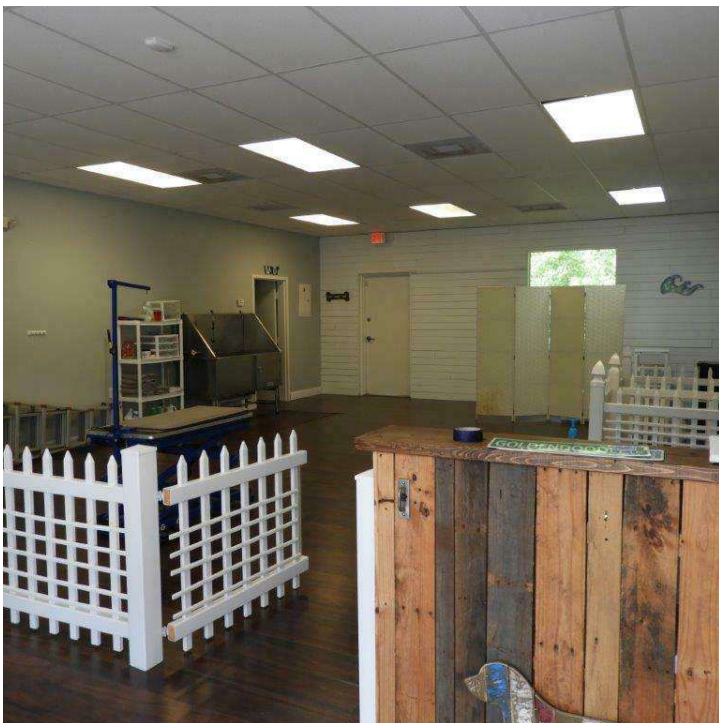
Lightle Beckner Robison, Inc.

321.722.0707 • teamlbr.com
70 W. Hibiscus Blvd.,
Melbourne, FL 32901

Information contained herein has been obtained through sources deemed reliable but cannot be guaranteed as to its accuracy. A purchaser or lessee is expected to verify all information to his/her own satisfaction. Zoning information subject to change and not warranted. Always confirm current requirements with local governing agencies.

ADDITIONAL PHOTOS

• 3540 Jupiter Blvd SE Palm Bay, FL 32909



VITOR DE SOUSA, CCIM

Retail Sales & Leasing
321.722.0707 X15
vitor@teamlbr.com

JEFFERY T. ROBISON, CCIM

President | Broker
321.722.0707 X13
jeff@teamlbr.com

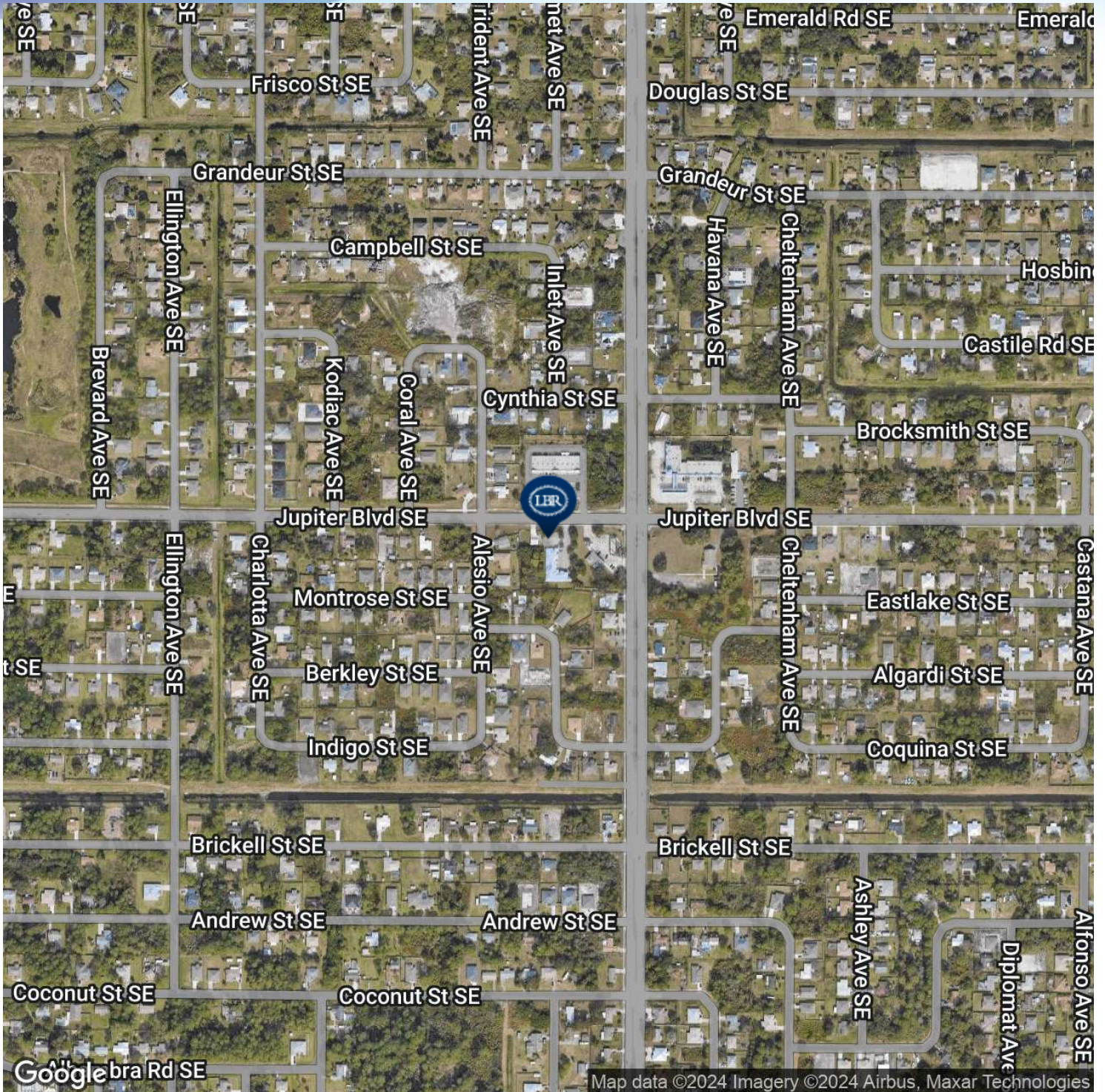
Lightle Beckner Robison, Inc.

321.722.0707 • teamlbr.com
70 W. Hibiscus Blvd.,
Melbourne, FL 32901

Information contained herein has been obtained through sources deemed reliable but cannot be guaranteed as to its accuracy. A purchaser or lessee is expected to verify all information to his/her own satisfaction. Zoning information subject to change and not warranted. Always confirm current requirements with local governing agencies.

LOCATION MAP

• 3540 Jupiter Blvd SE Palm Bay, FL 32909



VITOR DE SOUSA, CCIM

Retail Sales & Leasing
321.722.0707 X15
vitor@teamlbr.com

JEFFERY T. ROBISON, CCIM

President | Broker
321.722.0707 X13
jeff@teamlbr.com

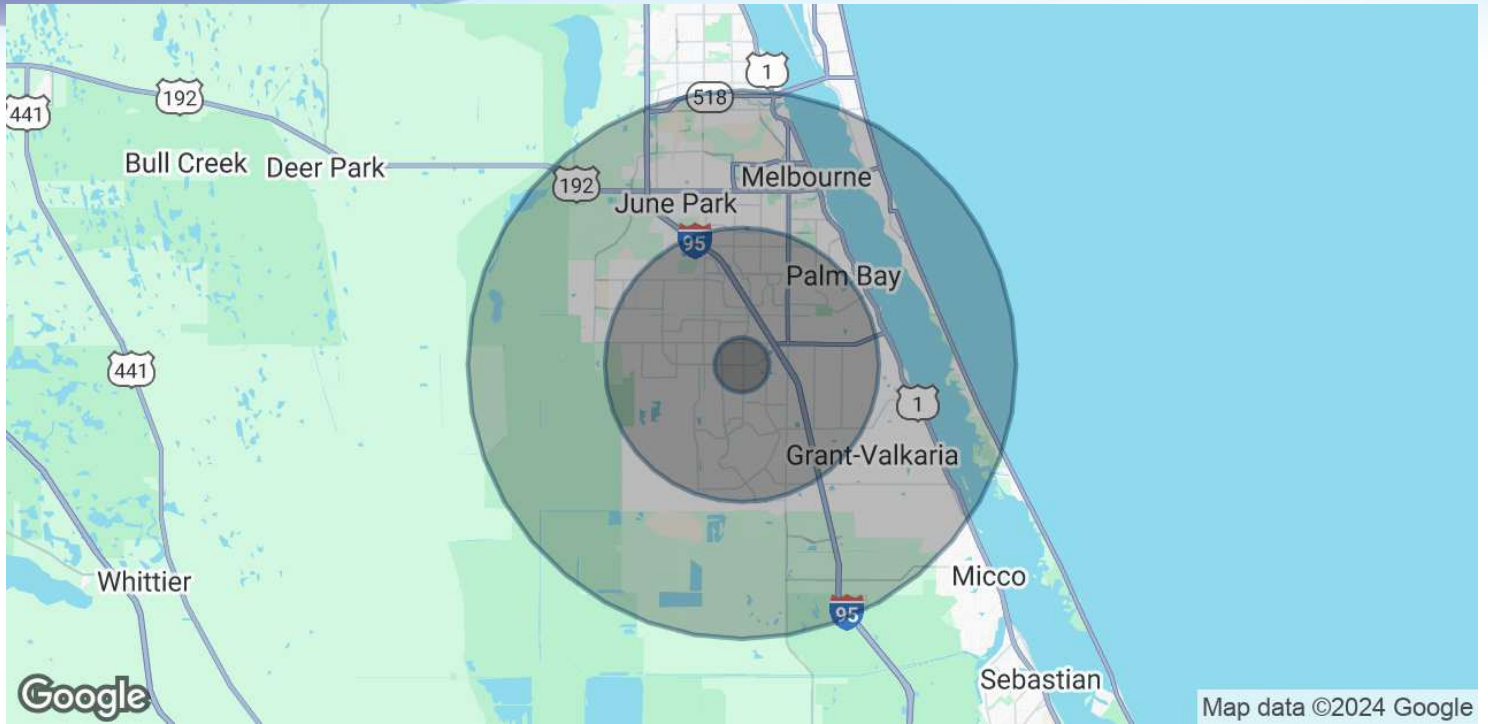
Lightle Beckner Robison, Inc.

321.722.0707 • teamlbr.com
70 W. Hibiscus Blvd.,
Melbourne, FL 32901

Information contained herein has been obtained through sources deemed reliable but cannot be guaranteed as to its accuracy. A purchaser or lessee is expected to verify all information to his/her own satisfaction. Zoning information subject to change and not warranted. Always confirm current requirements with local governing agencies.

DEMOGRAPHICS MAP & REPORT

• 3540 Jupiter Blvd SE Palm Bay, FL 32909



POPULATION

	1 MILE	5 MILES	10 MILES
Total Population	5,040	120,076	218,296
Average Age	42.1	43.6	44.0
Average Age (Male)	41.7	41.2	41.9
Average Age (Female)	42.1	44.6	45.6

HOUSEHOLDS & INCOME

	1 MILE	5 MILES	10 MILES
Total Households	1,863	48,039	93,530
# of Persons per HH	2.7	2.5	2.3
Average HH Income	\$59,235	\$60,712	\$63,872
Average House Value	\$168,266	\$176,264	\$202,401

2020 American Community Survey (ACS)

VITOR DE SOUSA, CCIM

Retail Sales & Leasing
321.722.0707 X15
vitor@teamlbr.com

JEFFERY T. ROBISON, CCIM

President | Broker
321.722.0707 X13
jeff@teamlbr.com

Lightle Beckner Robison, Inc.

321.722.0707 • teamlbr.com
70 W. Hibiscus Blvd.,
Melbourne, FL 32901

Information contained herein has been obtained through sources deemed reliable but cannot be guaranteed as to its accuracy. A purchaser or lessee is expected to verify all information to his/her own satisfaction. Zoning information subject to change and not warranted. Always confirm current requirements with local governing agencies.