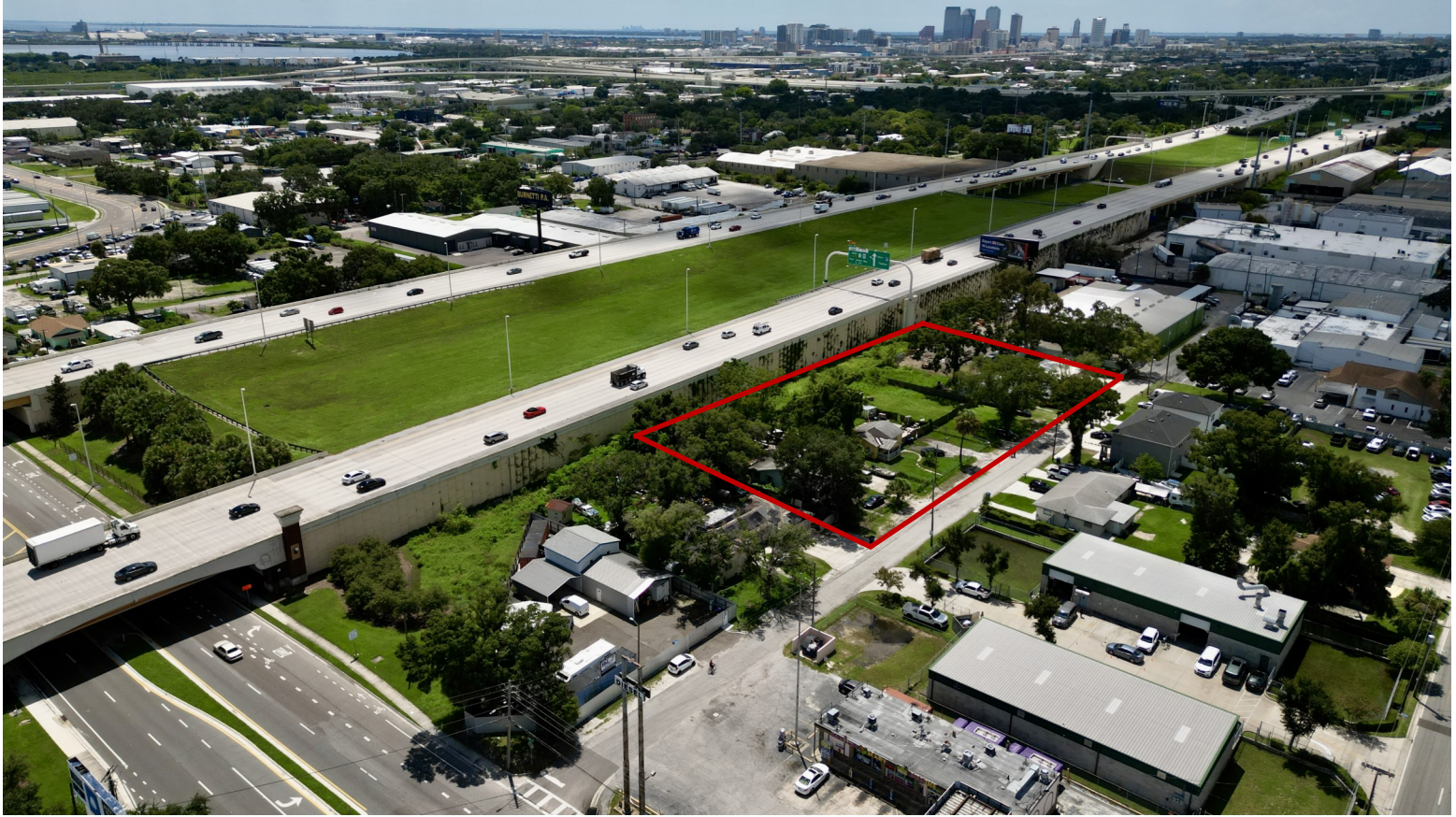


FOR SALE

ACLF or Multi-Family Land

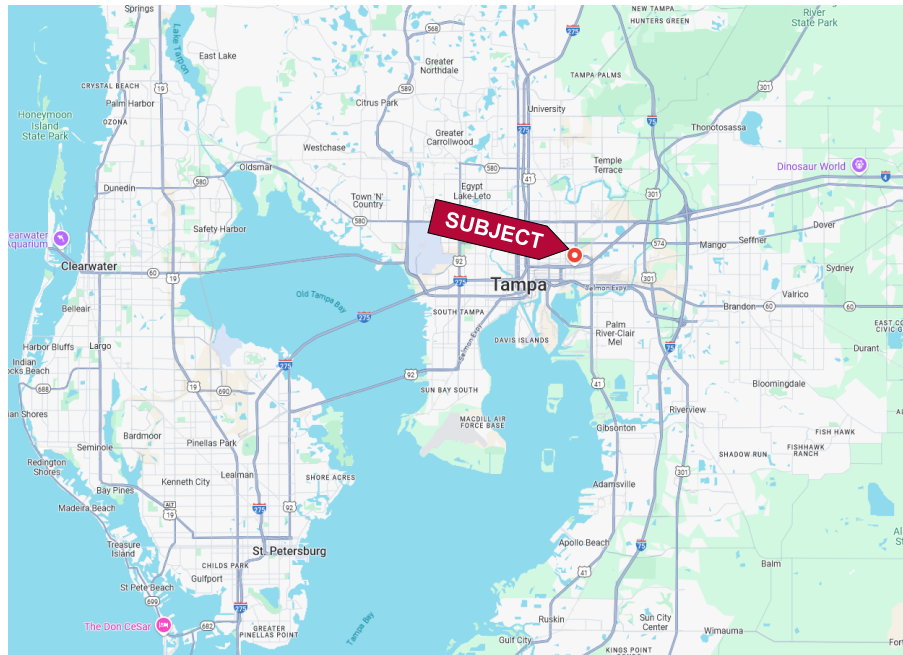
3905, 3909 and 3911 E 15th Ave., Tampa, FL 33605



FEATURES

- ❖ .92 Ares (MOL)
- ❖ Four Lots (sold together only)
- ❖ Zoning: RM 24–Residential Multi-Family
- ❖ 94 Unit ACLF or 22 Multi-Family Units – Plus 9 Storage Units
- ❖ Located in East Tampa Opportunity Zone
- ❖ Lot Dimensions: 270' x 156' x 270' x 145'
- ❖ 270' Frontage on E 15th Ave
- ❖ Utilities: Water, Sewer, Trash: City of Tampa
Electric: TECO
- ❖ Folio Numbers: 175381-, 175382-, 178383-0000
- ❖ Flood Zone: X
- ❖ 2023 Real Estate Taxes: \$7,724.00 (total/all parcels)
- ❖ **ASKING PRICE: \$1,250,000.00**

LOCATION MAP



Elliott M. Ross, CCIM
O: 813.755.6700
C: 727.639.3800
elliott@rossrealtytampabay.com

ROSS REALTY GROUP, INC.
Henderson Centre
3902 Henderson Blvd. Suite 203
Tampa, FL 33629



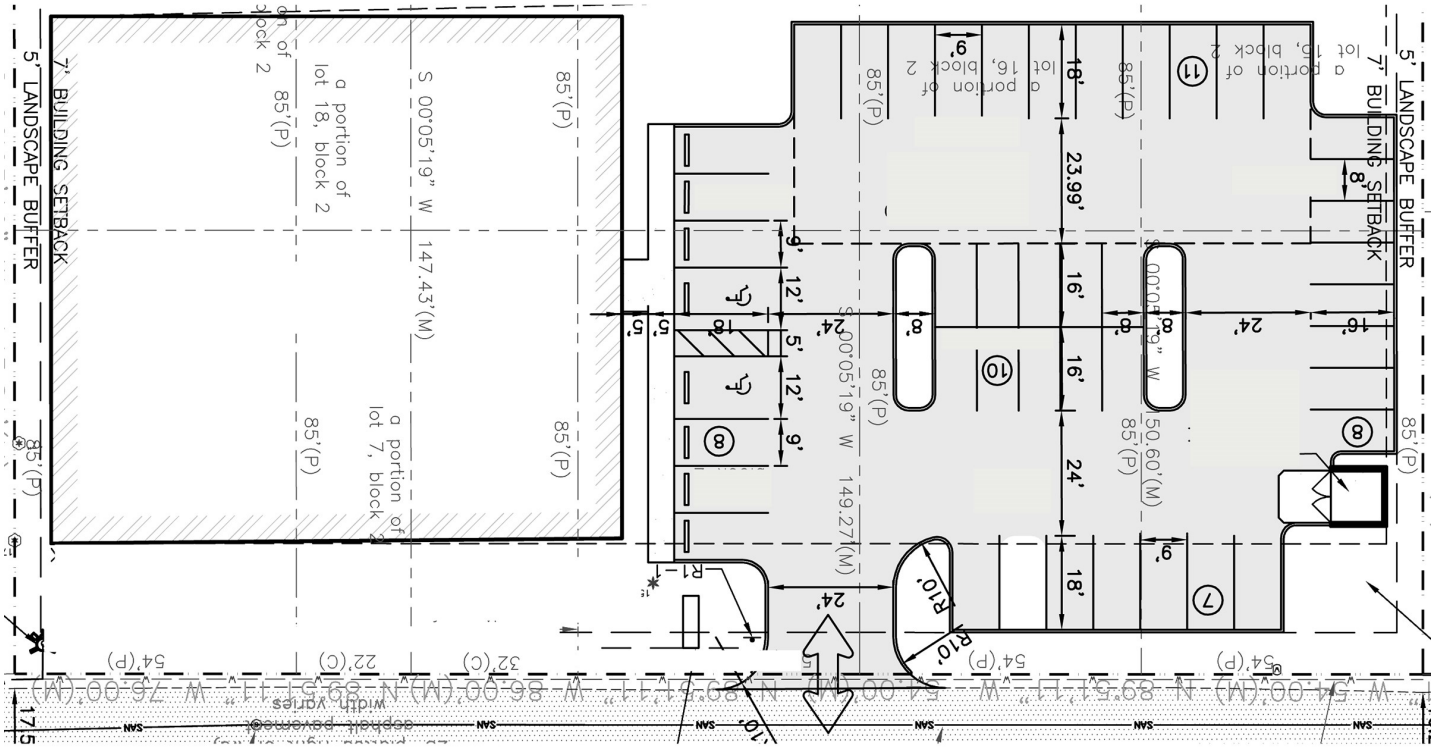
FOR SALE

ACLF or Multi-Family Land

3905, 3909 and 3911 E 15th Ave., Tampa, FL 33605

SITE PLAN

St. Road 400 (I-4)



E. 15th Ave

Hillsborough County Parcel Map

Interstate 4W



Any information given herein is obtained from sources considered reliable. However, we are not responsible for misstatement of facts, errors, omissions, prior sale, withdrawal from market, modification of mortgage commitment, terms and considerations, or change in price without notice. The information supplied herein is for informational purposes only and shall not contain a warranty or assurance that said information is correct. Any person intending to rely upon the information supplied herein should verify said information independently.