

OSCEOLA COMMERCE CENTER

CLASS-A INDUSTRIAL

±22,938 - 63,194 RSF AVAILABLE FOR LEASE

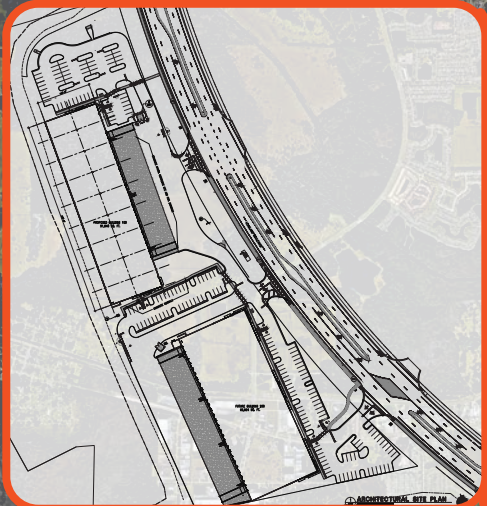
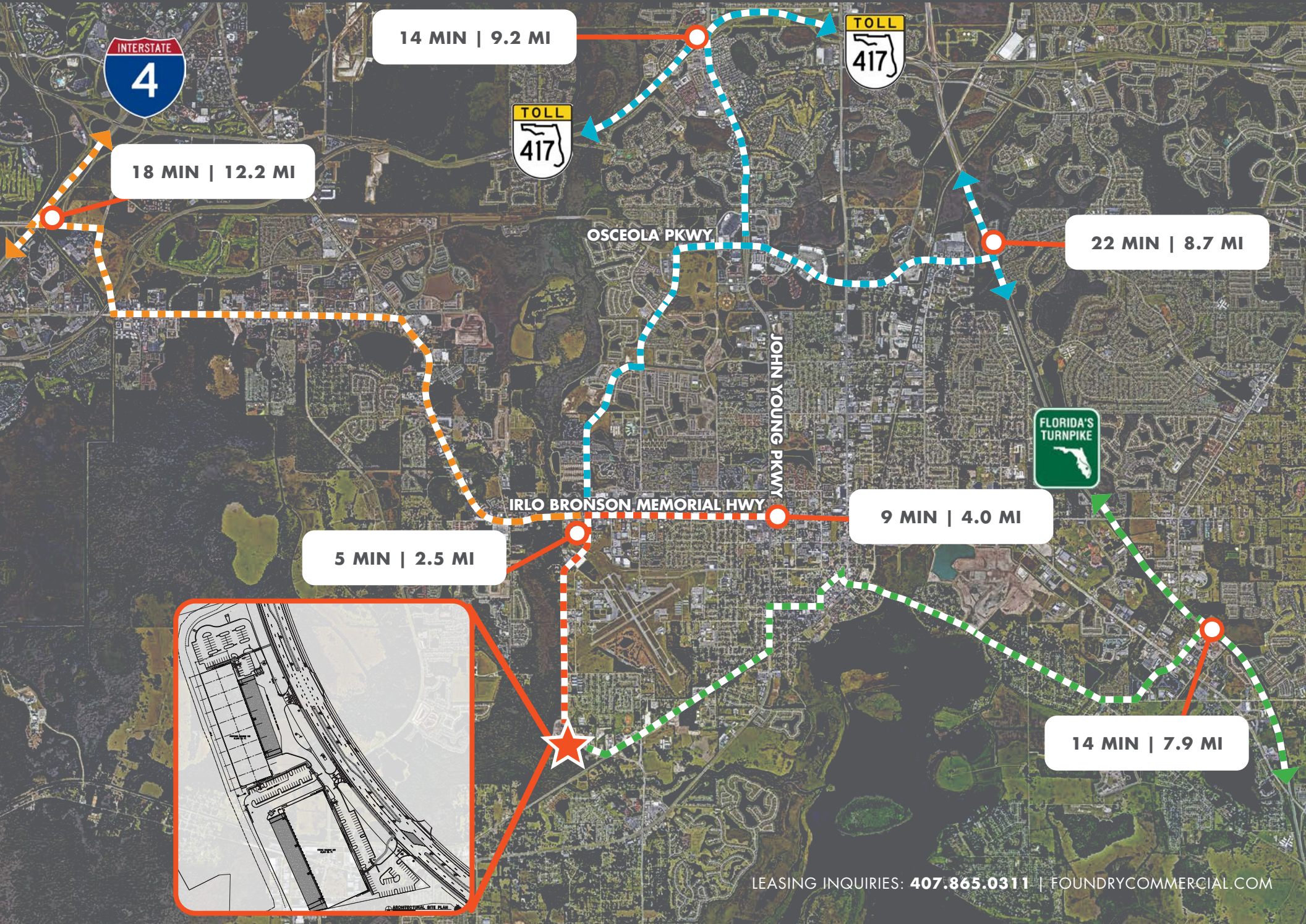
FOUNDRY
COMMERCIAL



1220 S HOAGLAND BLVD, KISSIMMEE, FL 34746

LOCAL LOCATION & ACCESS

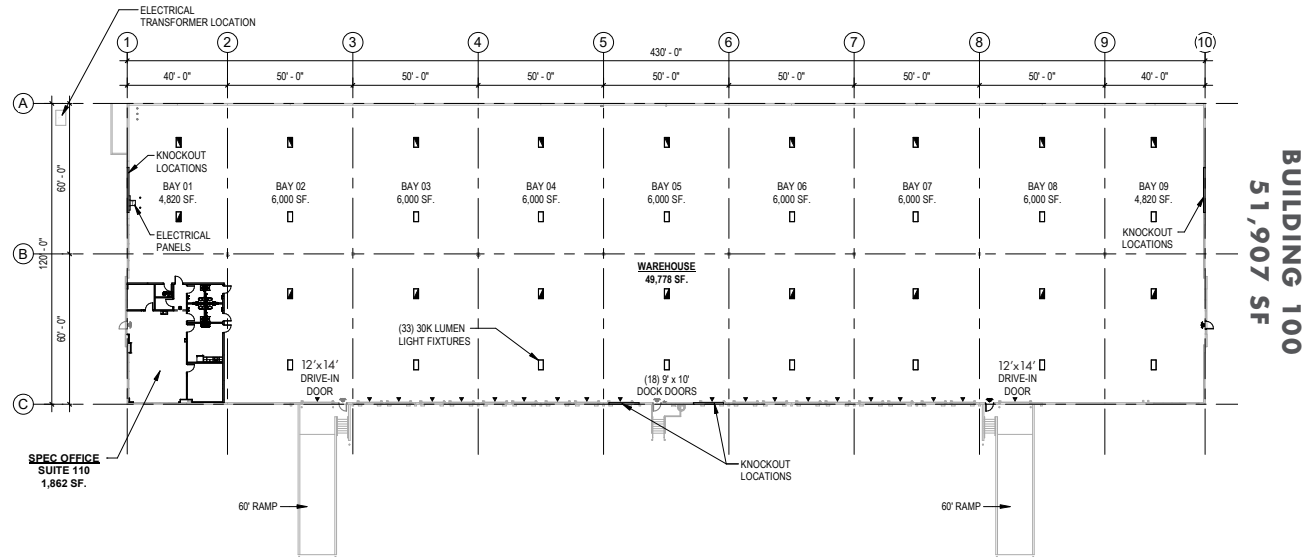
OSCEOLA COMMERCE CENTER



LEASING INQUIRIES: 407.865.0311 | foundrycommercial.com

BUILDING 100

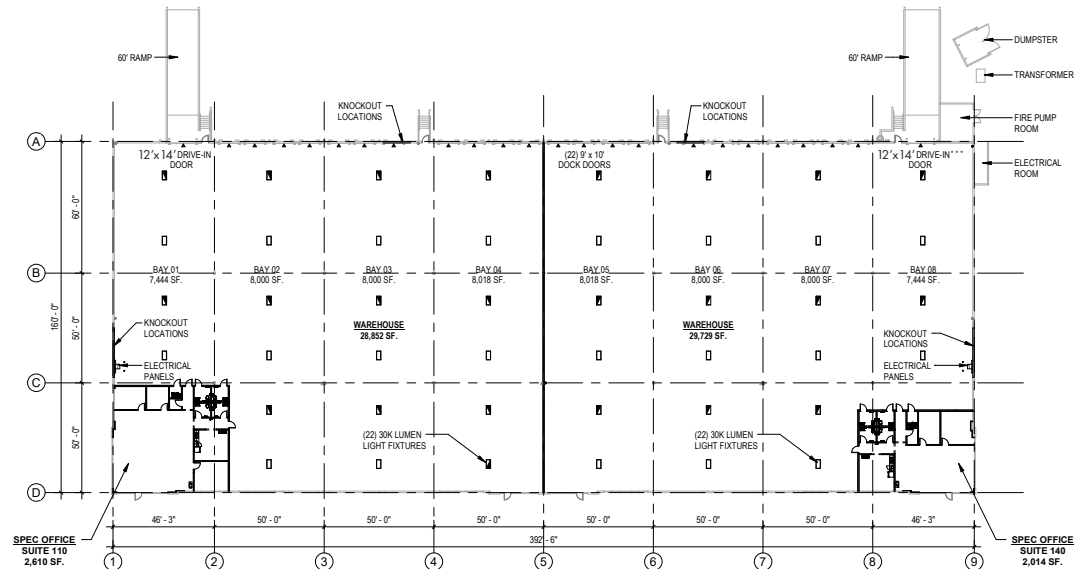
TOTAL SF:	22,938 - 51,907
YEAR BUILT:	2024
BUILDING TYPE:	Front Load
BUILDING DEPTH:	120'
CLEAR:	28'
COLUMN WIDTH:	60' speed (typical)
DOCK DOORS:	18 (9'x10")
OVERHEAD DOORS & RAMPS:	2 (12'x14') with ramps
TRUCK COURT DEPTH:	120'
LIGHTING:	LED
POWER:	1,200 amps/400 amps
SPRINKLER:	ESFR
INSULATION:	R-19 throughout



BUILDING 100
51,907 SF

BUILDING 200

TOTAL SF:	23,544 - 63,194
YEAR BUILT:	2024
BUILDING TYPE:	Rear Load
BUILDING DEPTH:	160'
CLEAR:	28'
COLUMN WIDTH:	60' speed (typical)
DOCK DOORS:	22 (9'x10")
OVERHEAD DOORS & RAMPS:	2 (12'x14') with ramps
TRUCK COURT DEPTH:	120'
LIGHTING:	LED
POWER:	1,200 amps/400 amps
SPRINKLER:	ESFR
INSULATION:	R-19 Entry Bay/Office & R-11 warehouse



BUILDING 200
63,194 SF





**CONTACT
FOR MORE INFORMATION**

JUSTIN RUBY, SIOR, CCIM

JUSTIN.RUBY@FOUNDRYCOMMERCIAL.COM

407.865.0311

JOEY WOODMAN

JOEY.WOODMAN@FOUNDRYCOMMERCIAL.COM

407.748.5888

TRAVIS HAMMOND

TRAVIS.HAMMOND@FOUNDRYCOMMERCIAL.COM

407.401.1707

FOUNDRY
COMMERCIAL

Although the information contained herein was provided by sources believed to be reliable, Foundry Commercial makes no representation, expressed or implied, as to its accuracy and said information is subject to errors, omissions or changes.