



🌀 LEASE RATE	\$14.00 - \$16.95 / SF
🌀 RATE TYPE	Triple Net
🌀 CAM	\$3.25 / SF (2024 Est.)
🌀 AVAILABLE	15,081 SF to 59,929 SF



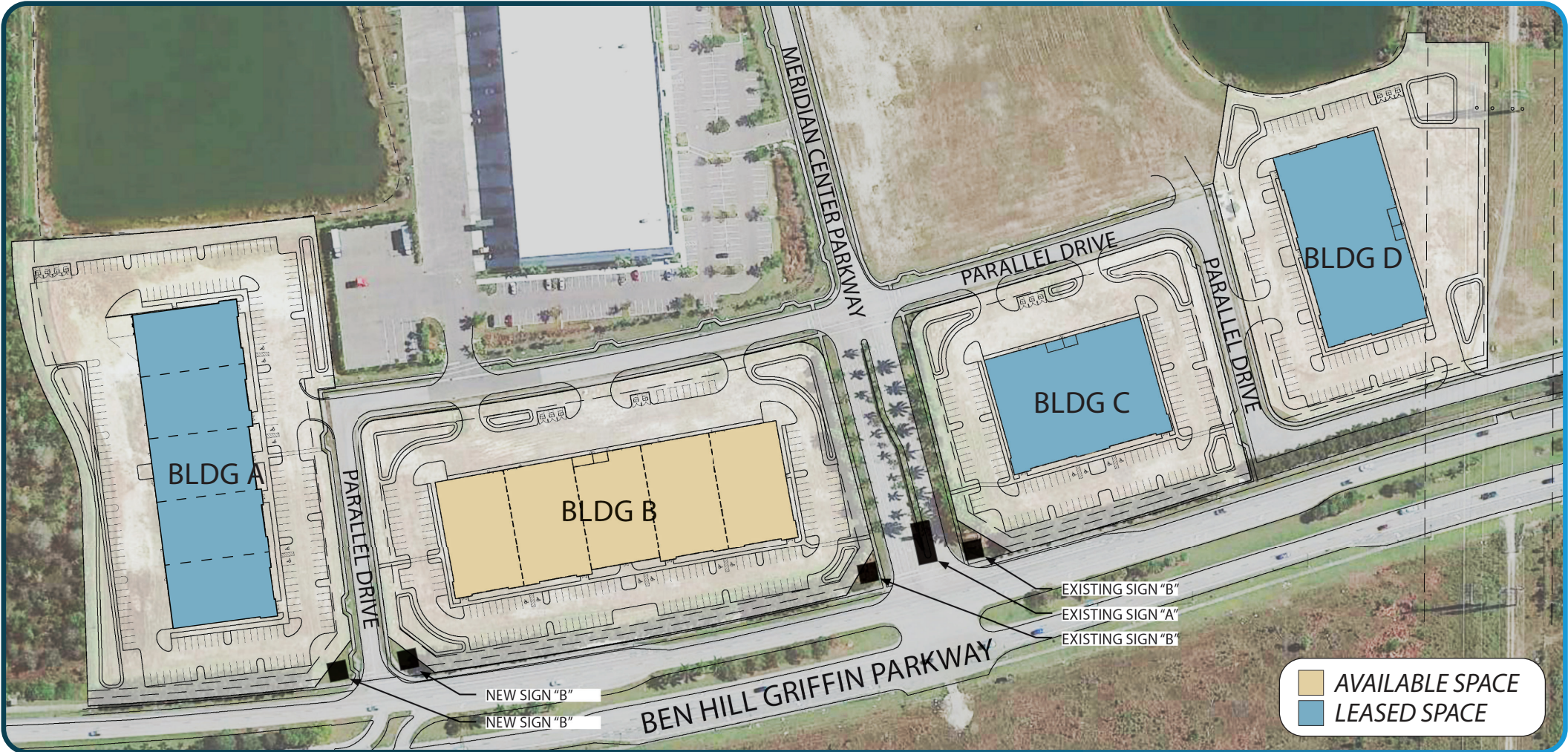
Meridian Business Campus Building B

16140 Parallel Drive
Fort Myers, Florida 33913

All information furnished regarding property for sale, rental or financing is from sources deemed reliable, but no warranty or representation is made to the accuracy thereof and same is subject to errors, omissions, change of price, or other conditions prior to sale, lease or financing or withdrawal without notice. No liability of any kind is to be imposed on the broker herein.

MERIDIAN BUSINESS CAMPUS

16101 - 16251 PARALLEL DRIVE, FORT MYERS, FLORIDA 33913



Clear Height Varies from 18' to 20'	Truck Court 53' Deep	Fully Sprinklered
12' x 14' Drive-In Doors	Bay Spacing Varies from 20' x 53' to 30' x 53'	1.83/1,000 SF Parking Ratio

YOUR LOCAL MARKET **EXPERT**
 11215 Metro Parkway, Suite 1 | Fort Myers, Florida 33966 | Lee-FL.com



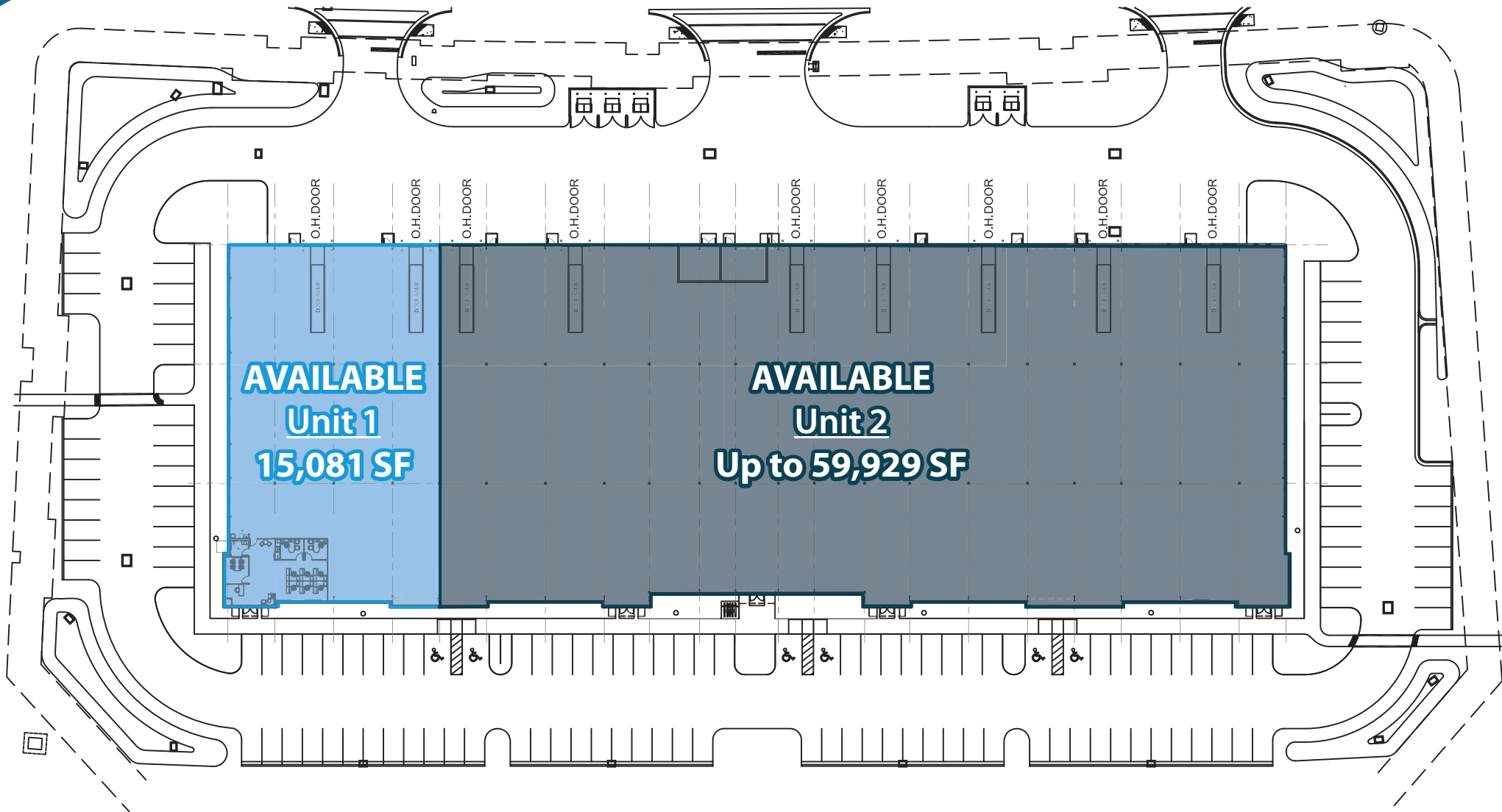
MERIDIAN BUSINESS CAMPUS

BUILDING B - UP TO 59,929 SF REMAINING!

16140 PARALLEL DRIVE, FORT MYERS, FL 33913

LEE & ASSOCIATES
COMMERCIAL REAL ESTATE SERVICES

GEIS
DEVELOPMENT



Clear Height Varies from 18' to 20'	Truck Court 53' Deep	Fully Sprinklered
12' x 14' Drive-In Doors	Bay Spacing Varies from 20' x 53' to 30' x 53'	1.83/1,000 SF Parking Ratio

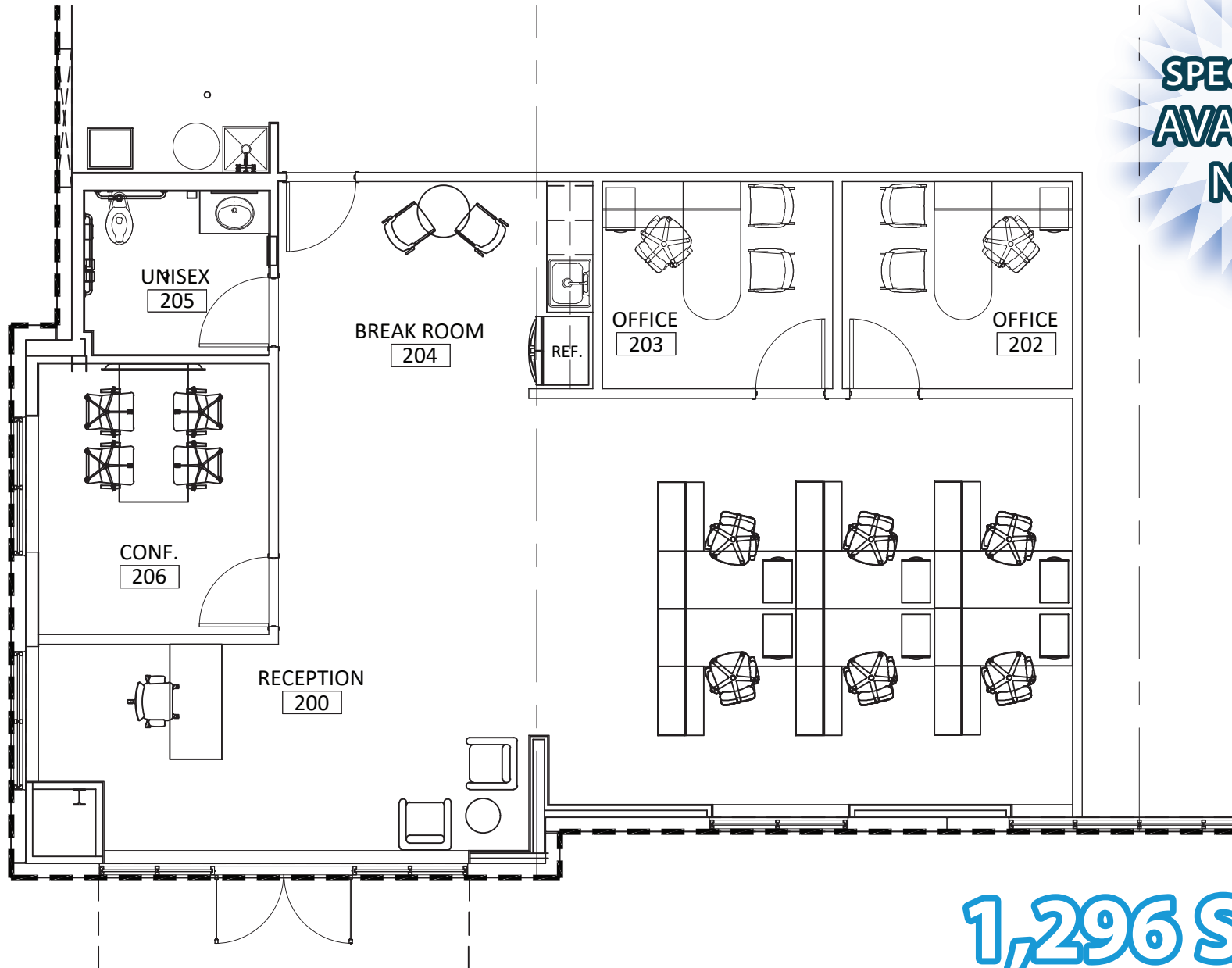
YOUR LOCAL MARKET **EXPERT**
11215 Metro Parkway, Suite 1 | Fort Myers, Florida 33966 | Lee-FL.com



MERIDIAN BUSINESS CAMPUS

BUILDING B - UNIT 1 SPEC OFFICE PLAN

16140 PARALLEL DRIVE, FORT MYERS, FL 33913



**SPEC OFFICE
AVAILABLE
NOW!**

1,296 SF

MERIDIAN BUSINESS CAMPUS BUILDING B - UNIT 1 INTERIOR IMAGES

16140 PARALLEL DRIVE, FORT MYERS, FL 33913

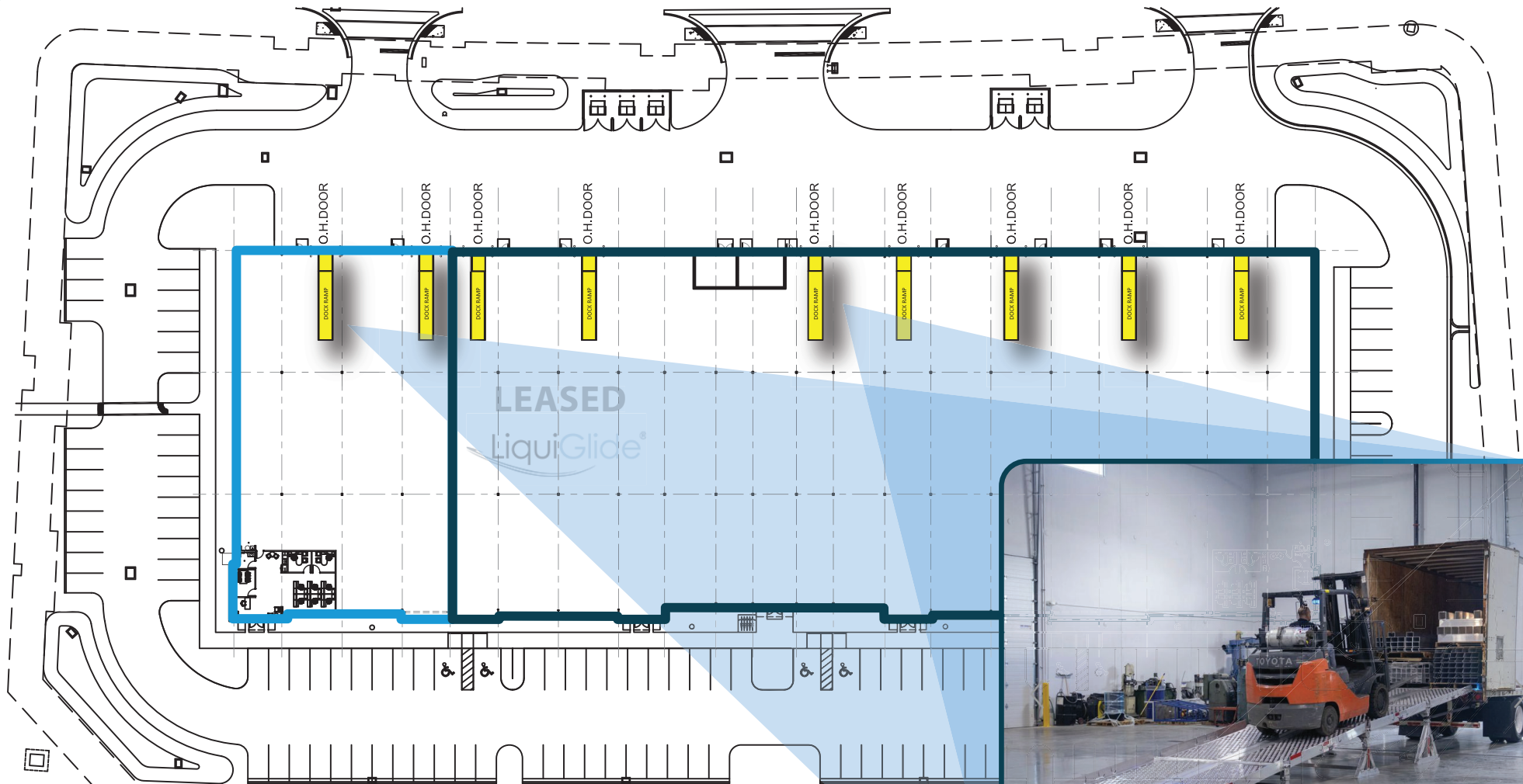


MERIDIAN BUSINESS CAMPUS BUILDING B - UP TO 59,929 SF REMAINING!

16140 PARALLEL DRIVE, FORT MYERS, FL 33913

LEE & ASSOCIATES
COMMERCIAL REAL ESTATE SERVICES

GEIS
DEVELOPMENT



DOCK RAMP LOADING CAPABILITIES!



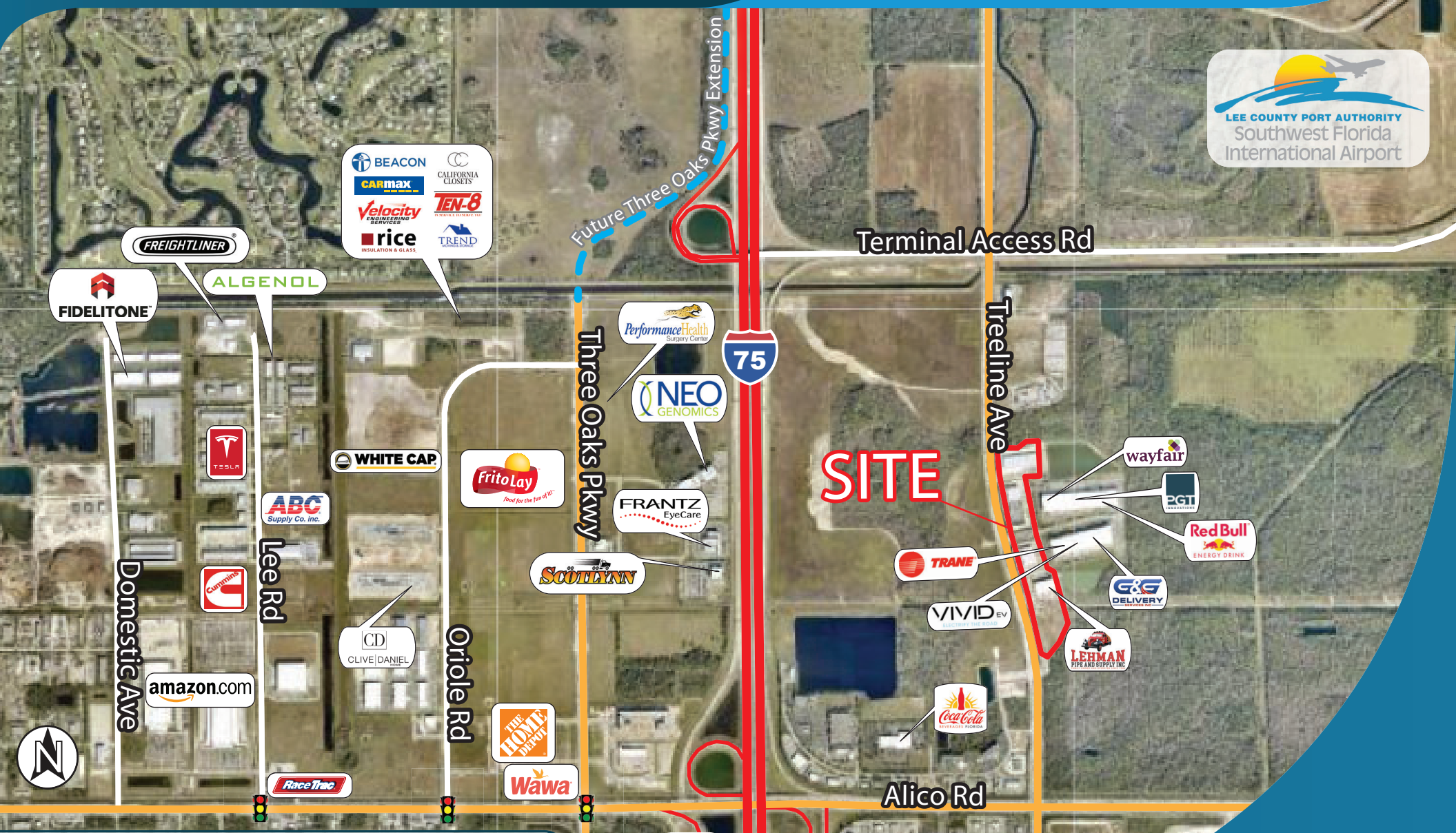
INTERIOR DOCK RAMP EXAMPLE

YOUR LOCAL MARKET **EXPERT**
11215 Metro Parkway, Suite 1 | Fort Myers, Florida 33966 | Lee-FL.com

X @ in f

MERIDIAN BUSINESS CAMPUS

16101 - 16251 PARALLEL DRIVE, FORT MYERS, FLORIDA 33913



Please Contact:
The Industrial Team
Adam Bornhorst
Senior Vice President
239.210.7616
abornhorst@lee-associates.com

