

1520 Industrial Drive Unit E

Lake in the Hills, IL 60156

For Lease

MLS #12189909

INDUSTRIAL



		1,200 SF I	1,200 SF H	1,200 SF G	
2,400 SF A	2,400 SF B	1,200 SF C	1,200 SF D	1,200 SF E	2,400 SF F

INDUSTRIAL UNIT 1,200 SF

\$1,200/MO.

\$12. PSF (GROSS)

INDUSTRIAL SPACE 1,200 SF

UNIT E: 1,200 SF industrial space with 240 SF office, 1 bath, a 10'x10' DID, triple basin drains, 200 amp, 240V, 3 phase power and 18' ceilings.

Unit is part of a 14,400 SF building with a common exterior dock. Located in Cory South of the Larsen Industrial Park just off of Pyott Road.

Ideal unit for contractors/trades or to store toys. \$1,200/mo. Gross. CAM and taxes included. Tenant responsible for utilities.

Available 1/1/25.

Specifications

Building Size:	14,400 SF
Year Built:	2004
Office Size:	240 SF
HVAC System:	GFA
Electrical:	200 amp 240V 3 Phase
Sprinklers:	Yes
Washrooms:	1 ADA
Ceiling Height:	18 ft
Parking:	Common
DID's:	(1) 10'x10'
Dock:	1 Common exterior
Sewer/Water:	City
Zoning:	M1
CAM & Taxes	Included
PIN #:	19-21-127-002

[CLICK HERE TO VIEW OUR WEBSITE](#)

No warranty or representation is made as to the accuracy of the foregoing information. Terms of sale or lease and availability are subject to change or withdrawal without notice. This document is for information purposes only. No offer of sub-agency is being made.



www.PremierCommercialRealty.com | 847.854.2300 | 9225 S. Route 31, Lake in the Hills, IL 60156

VP / Designated Managing Broker

Heather Schweitzer

HeatherS@PremierCommercialRealty.com

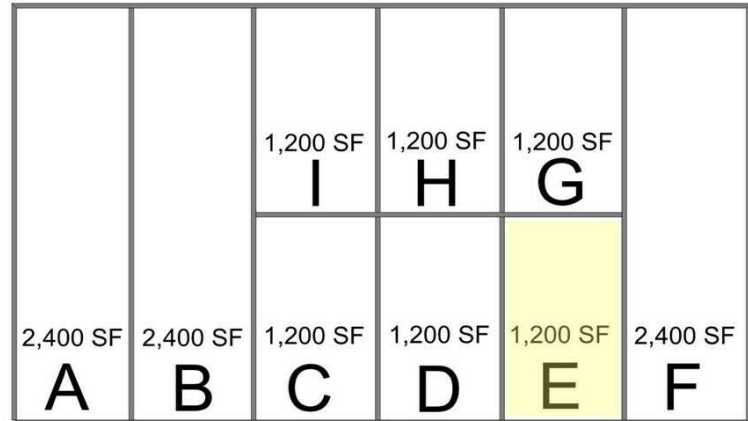
O: 847.854.2300 x15 C: 815.236.9816

1520 Industrial Drive Unit E

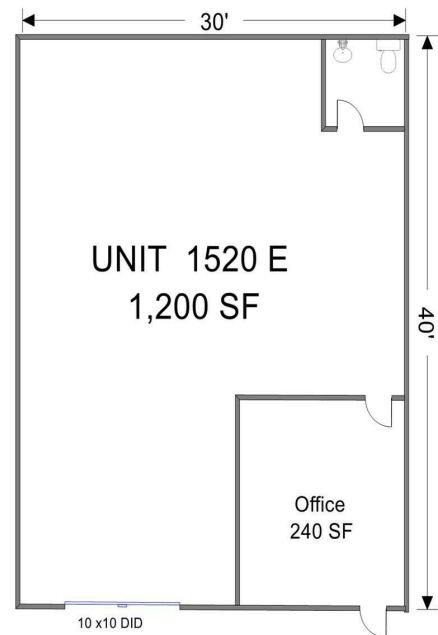
Lake in the Hills, IL 60156

For Lease

INDUSTRIAL



1520 Industrial Drive



[CLICK HERE TO VIEW OUR WEBSITE](#)

No warranty or representation is made as to the accuracy of the foregoing information. Terms of sale or lease and availability are subject to change or withdrawal without notice. This document is for information purposes only. No offer of sub-agency is being made.



www.PremierCommercialRealty.com | 847.854.2300 | 9225 S. Route 31, Lake in the Hills, IL 60156

VP / Designated Managing Broker
Heather Schweitzer
HeatherS@PremierCommercialRealty.com
O: 847.854.2300 x15 C: 815.236.9816