



## Property Highlights

- Located in Colonial TownPark, Orlando's premier mixed-use development featuring quality retail and restaurants within walking distance
- Unique office above retail setting
- Retail neighbors include Publix, AmStar Theaters, The Hangry Bison, Ruths Chris, Duffy's and more
- Immediate access to Interstate-4 and S.R. 417 (the "Greenway")
- A true live, work and play environment

**Emily Zinaich**, Senior Vice President  
D 407 440 6641  
C 407 230 8797  
emily.zinaich@avisonyoung.com

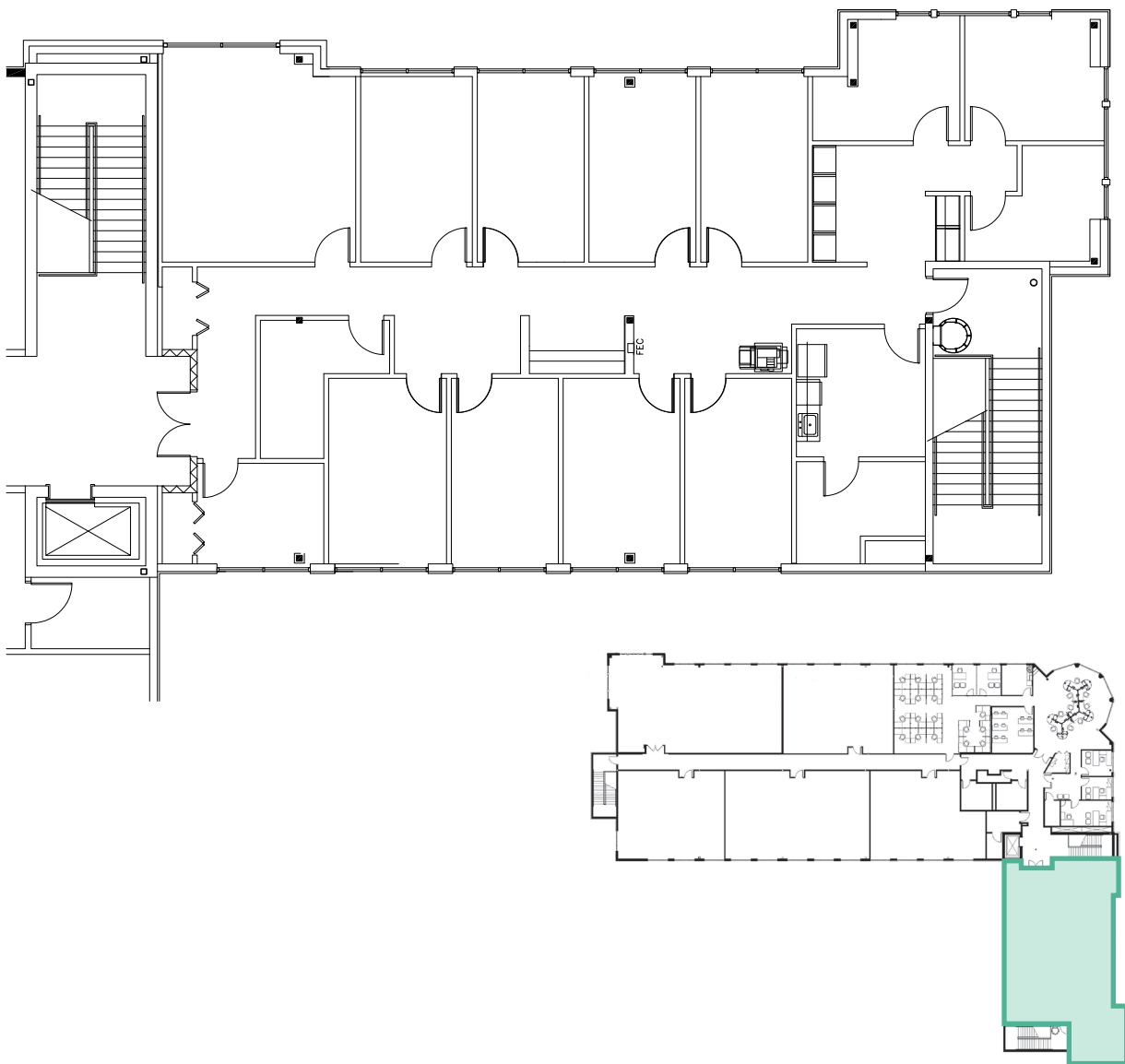


## Walkable Amenities

- AmStar Cinemas
- Amura
- Corona Cigar Company
- Duffy's Sports Grill
- F & D Cantina
- Menchi's Frozen Yogurt
- Papa Joe's Pizza
- Paradise Grills
- Peterbrooke Chocolatier
- Publix
- Ruths Chris Steak House
- The Hangry Bison
- The Vineyard Wine Company
- Woof Gang Bakery



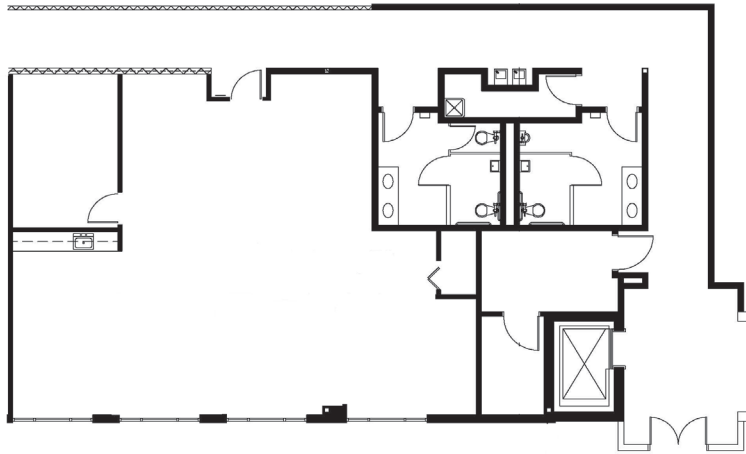
## Suite 2101 - 3,836± rsf



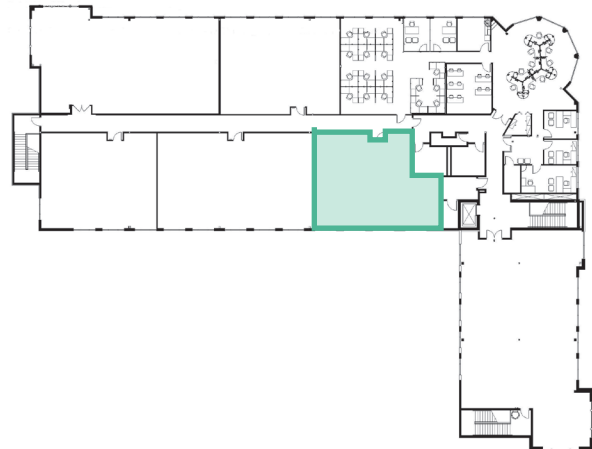
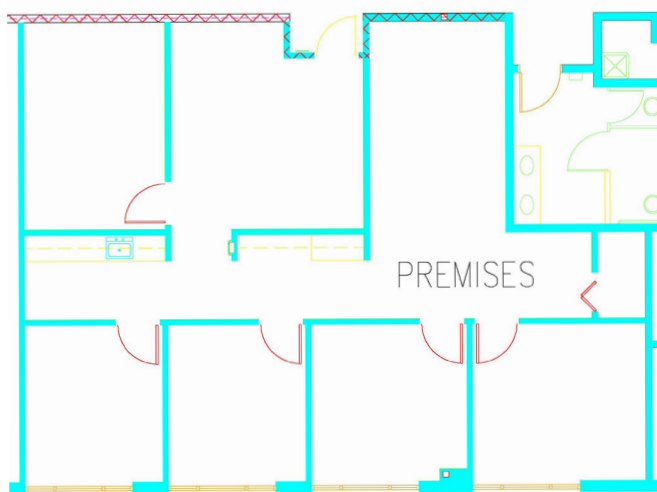
**Emily Zinaich**, Senior Vice President  
D 407 440 6641  
C 407 230 8797  
emily.zinaich@avisonyoung.com

## Suite 2135 - 1,704± rsf

Current Layout

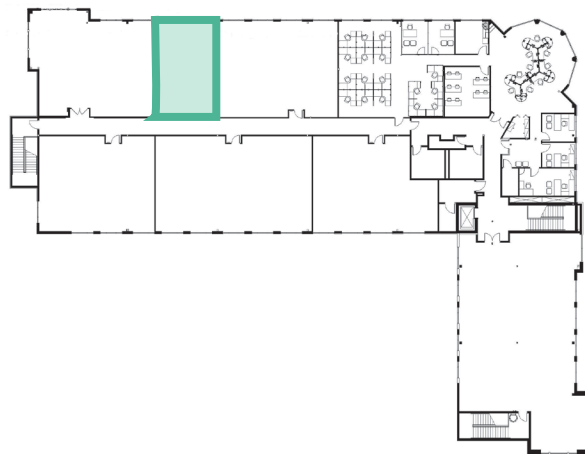
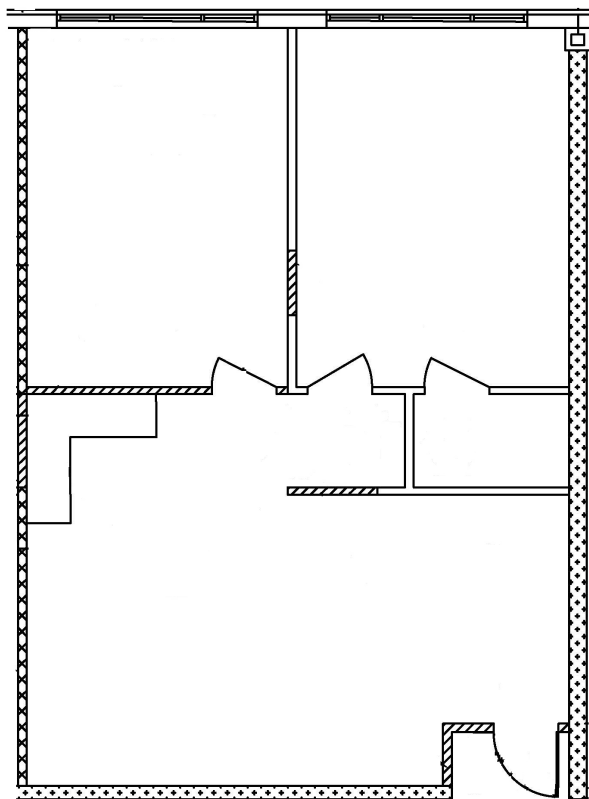


Sample Layout



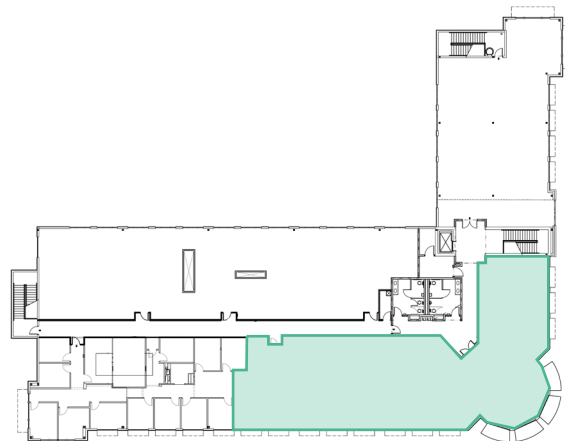
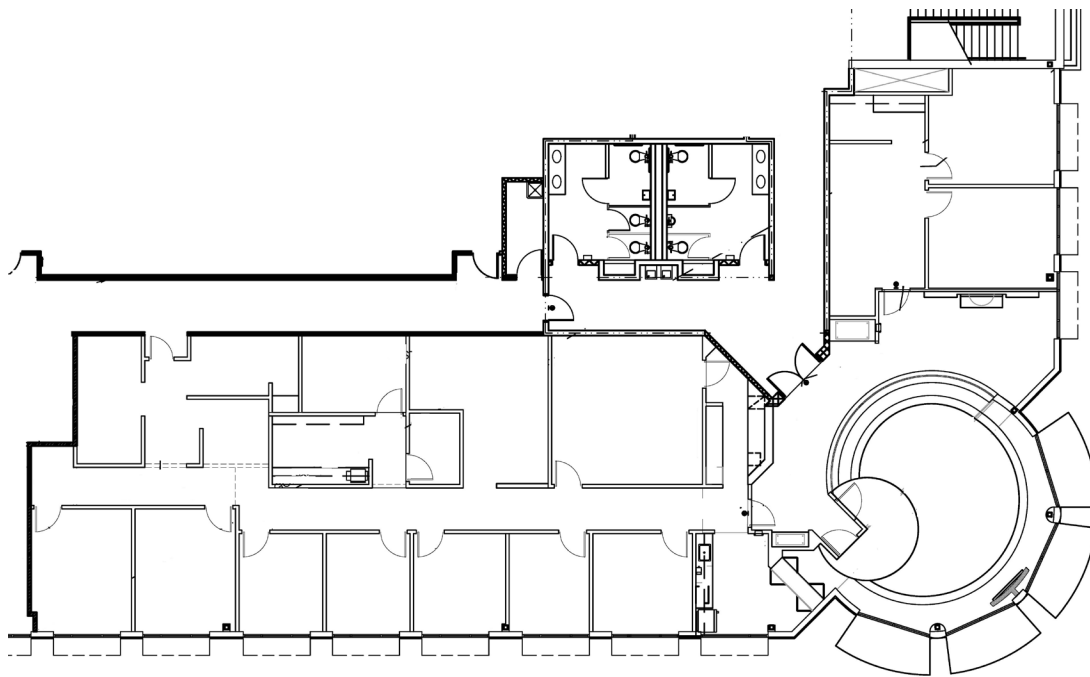
**Emily Zinaich**, Senior Vice President  
D 407 440 6641  
C 407 230 8797  
emily.zinaich@avisonyoung.com

## Suite 2165 - 938± rsf



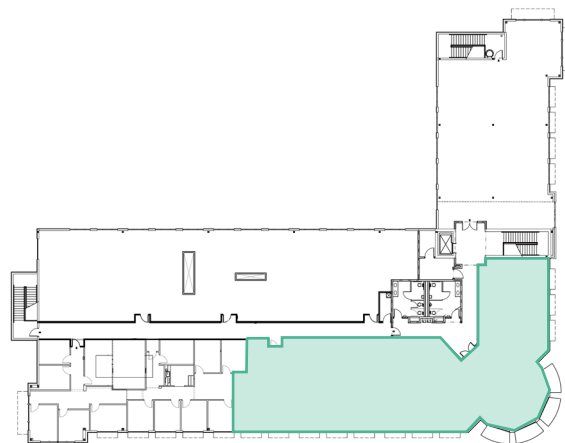
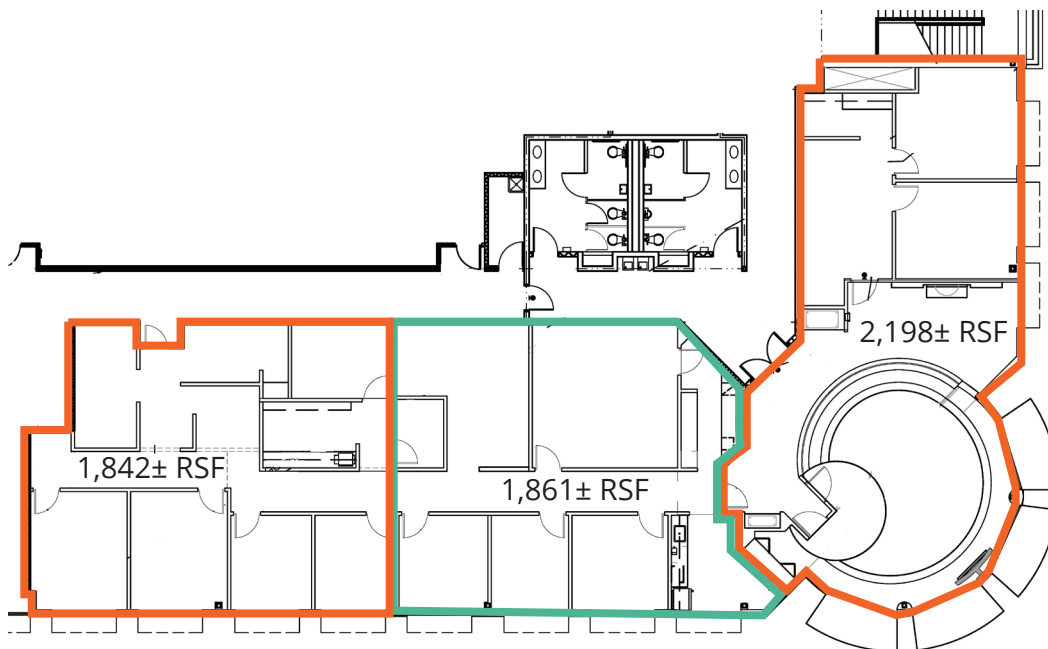
**Emily Zinaich**, Senior Vice President  
D 407 440 6641  
C 407 230 8797  
emily.zinaich@avisonyoung.com

**Suite 2215 - 5,901± rsf**



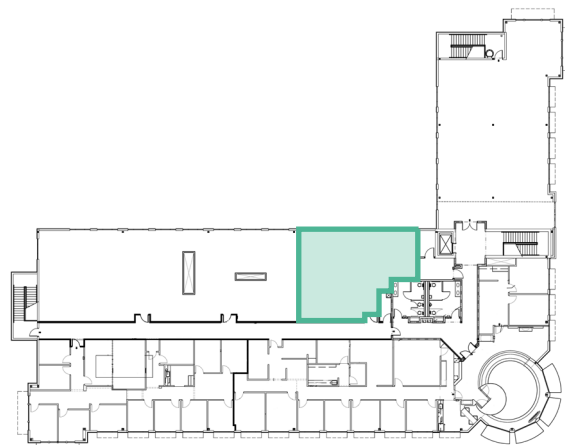
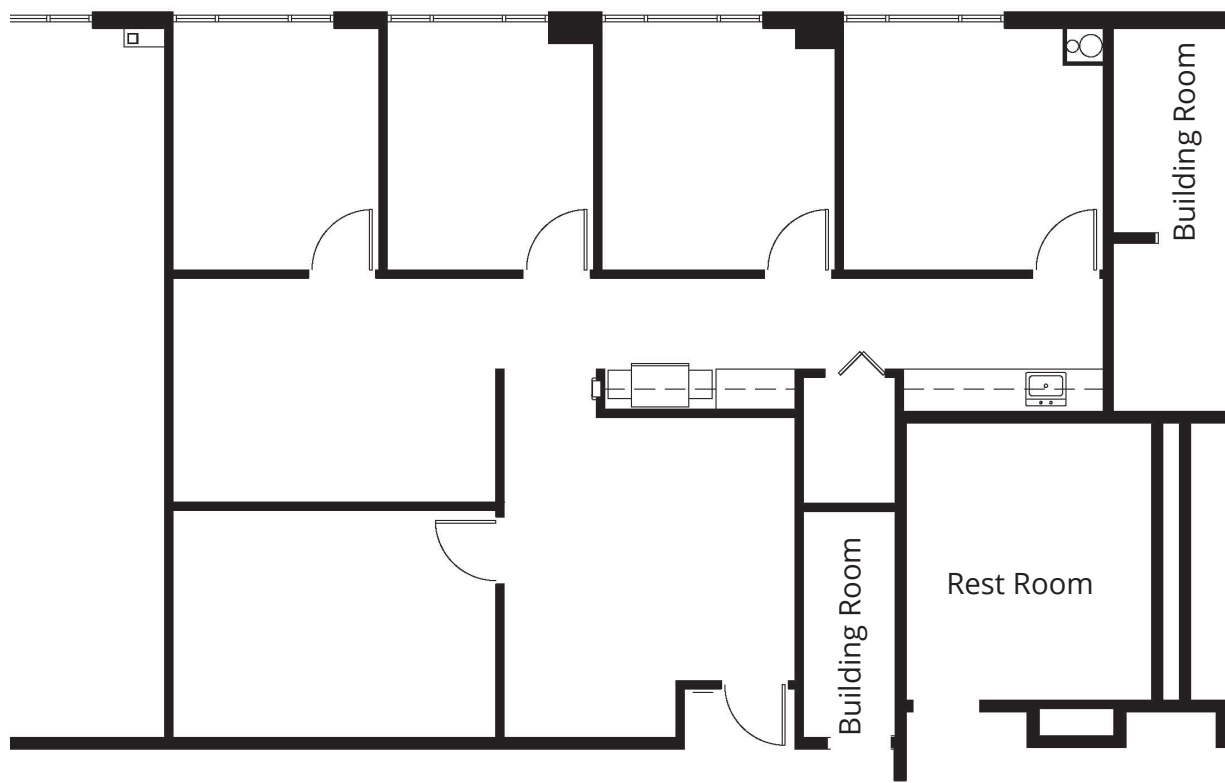
**Emily Zinaich**, Senior Vice President  
D 407 440 6641  
C 407 230 8797  
emily.zinaich@avisonyoung.com

**Suite 2215 - 5,901± rsf  
Will Subdivide**



**Emily Zinaich**, Senior Vice President  
D 407 440 6641  
C 407 230 8797  
emily.zinaich@avisonyoung.com

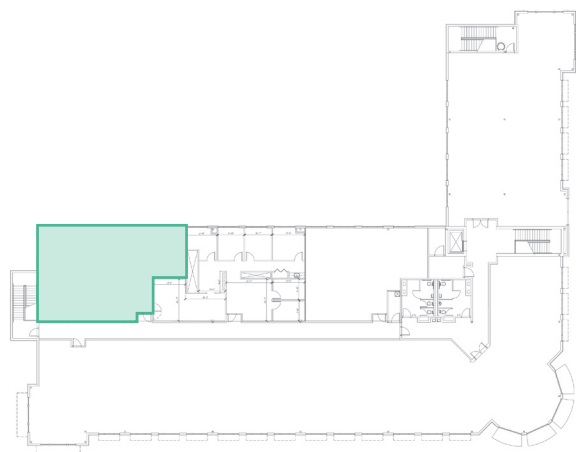
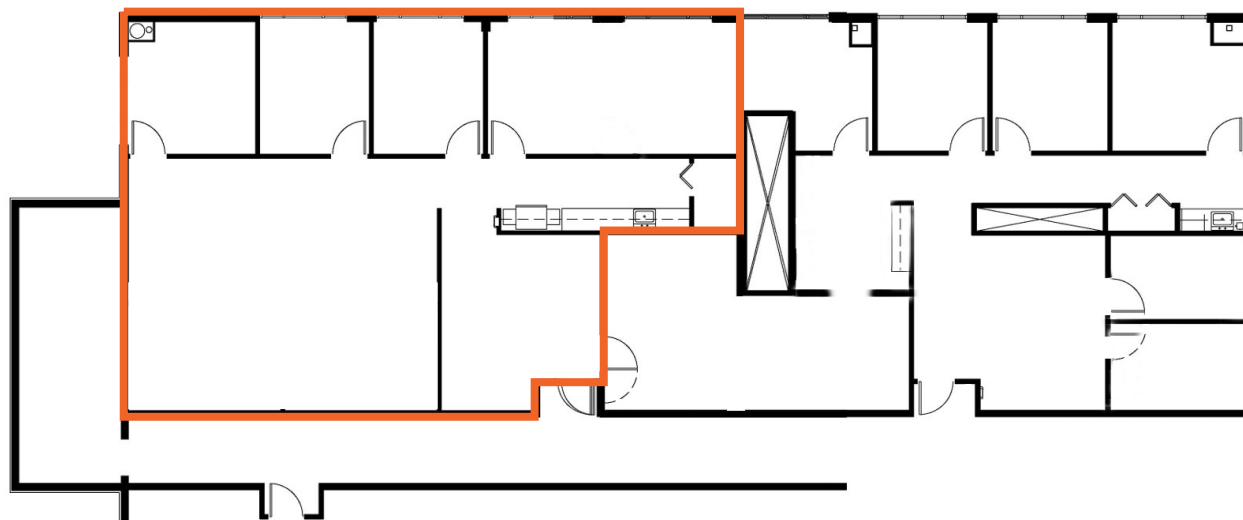
**Suite 2225 - 1,638± rsf  
Available In 30 Days**



**Emily Zinaich**, Senior Vice President  
D 407 440 6641  
C 407 230 8797  
emily.zinaich@avisonyoung.com



**Suite 2259 - 1,911± rsf**



**Emily Zinaich**, Senior Vice President  
D 407 440 6641  
C 407 230 8797  
emily.zinaich@avisonyoung.com