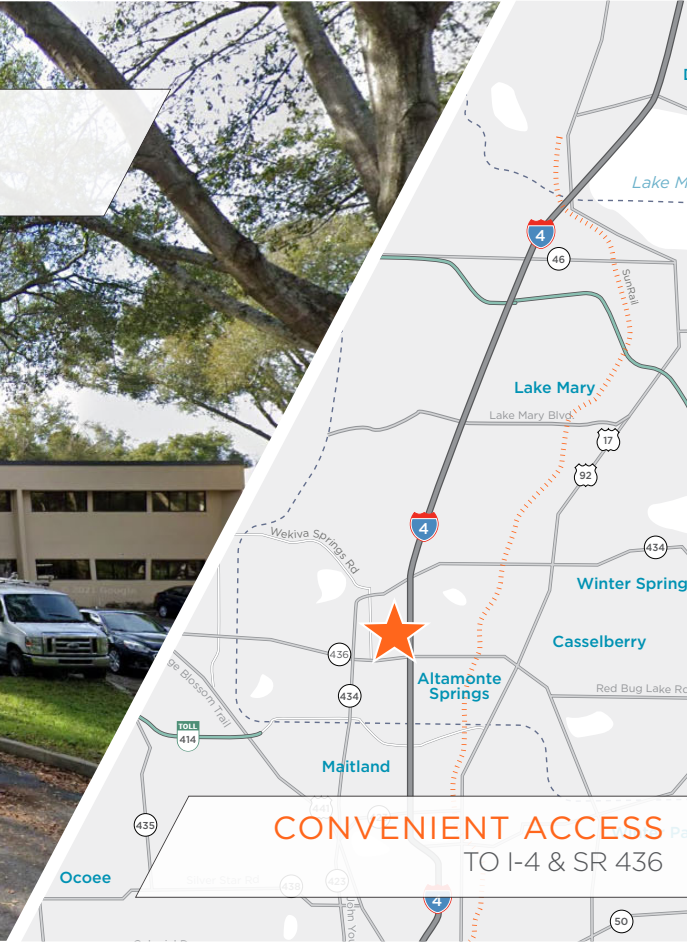


**180 N WESTMONTE DR**  
ALTAMONTE SPRINGS, FL 32714



**FRONTAGE SIGN AVAILABLE**



**CONVENIENT ACCESS**  
TO I-4 & SR 436

**3,744 - 7,932 SF AVAILABLE**  
**180 N WESTMONTE DR**

# BUILDING HIGHLIGHTS

**ASKING RATE**  
\$14.00/SF MG

**MONTHLY RATE\***  
\$9,485.35

**SUBLEASE EXPIRATION**  
APRIL 1, 2026

**TOTAL BUILDING SF**  
7,932 SF

**PARKING RATIO**  
3.34/1,000

**CEILING HEIGHT**  
12'

**FLOORS**  
2

**YEAR BUILT**  
1984

**AVAILABILITY**  
IMMEDIATELY

**CONSTRUCTION**  
MASONRY

**ZONING**  
GO

*\*Sales Tax Included*

## CONTACT INFORMATION

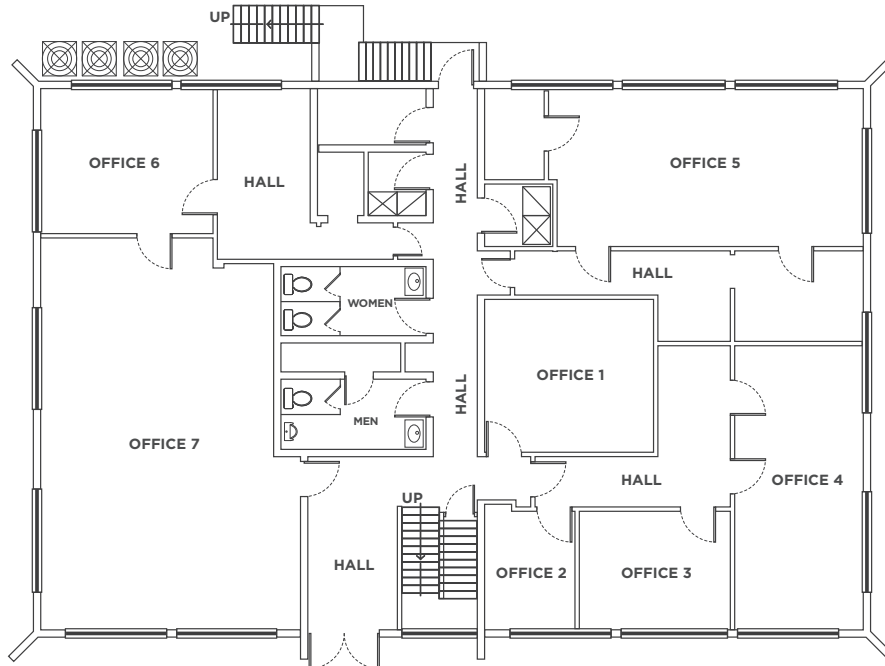
**RYAN HUBBARD**  
Director  
+1 407 541 4390  
ryan.hubbard@cushwake.com

**TAYLOR ZAMBITO**  
Senior Director  
+1 407 541 4409  
taylor.zambito@cushwake.com

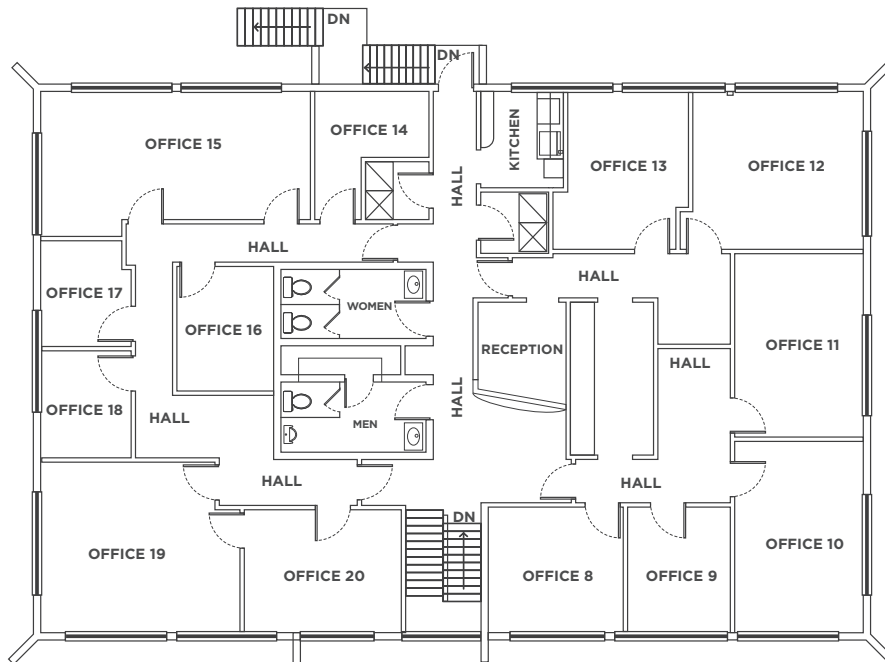


©2024 Cushman & Wakefield. All rights reserved. The information contained in this communication is strictly confidential. This information has been obtained from sources believed to be reliable but has not been verified. NO WARRANTY OR REPRESENTATION, EXPRESS OR IMPLIED, IS MADE AS TO THE CONDITION OF THE PROPERTY (OR PROPERTIES) REFERENCED HEREIN OR AS TO THE ACCURACY OR COMPLETENESS OF THE INFORMATION CONTAINED HEREIN, AND SAME IS SUBMITTED SUBJECT TO ERRORS, OMISSIONS, CHANGE OF PRICE, RENTAL OR OTHER CONDITIONS, WITHDRAWAL WITHOUT NOTICE, AND TO ANY SPECIAL LISTING CONDITIONS IMPOSED BY THE PROPERTY OWNER(S). ANY PROJECTIONS, OPINIONS OR ESTIMATES ARE SUBJECT TO UNCERTAINTY AND DO NOT SIGNIFY CURRENT OR FUTURE PROPERTY PERFORMANCE.

# 180 N WESTMONTE DR FLOOR PLAN



1<sup>ST</sup> FLOOR PLAN



2<sup>ND</sup> FLOOR PLAN

## CONTACT INFORMATION

**RYAN HUBBARD**  
Director  
+1 407 541 4390  
ryan.hubbard@cushwake.com

**TAYLOR ZAMBITO**  
Senior Director  
+1 407 541 4409  
taylor.zambito@cushwake.com

