

**FOR LEASE**

**PROFESSIONAL OFFICE**



**7434 S Federal Highway, Port Saint Lucie, FL 34952**  
Marlin Professional Center

**1,350 +/- SQFT**



- Professional office with plenty of parking
- Layout: reception area, conference room, open work area, one kitchenette, one restroom.
- Prime location with easy access to 1-95 and US 1
- Prominent signage available
- Zoned: CG-PSL (General Commercial)

**\$2,250 / month**

**Call or text 954-224-8773 for more information!**



**JOE PELAYO, CCIM, SIOR**  
BROKER

[trec@joepelayo.com](mailto:trec@joepelayo.com)

**954.224.8773**

**TREC**  
Total Real Estate Consultants Inc.  
[www.trecfl.com](http://www.trecfl.com)

**GEORGE PELAYO**  
BROKER ASSOCIATE

[george@trecfl.com](mailto:george@trecfl.com)

**954.482.1330**



NOTICE: This information has been obtained from sources believed to be reliable but has not been verified. No warranty or representation, express or implied, is made as to the condition/legal adjustments of the property (or properties) referenced or as to the accuracy or completeness of the information contained, and same is submitted subject to errors, omissions, change of price, retail or other conditions, including but not limited to withdrawal without notice, and to any special listing conditions imposed by the property owner.



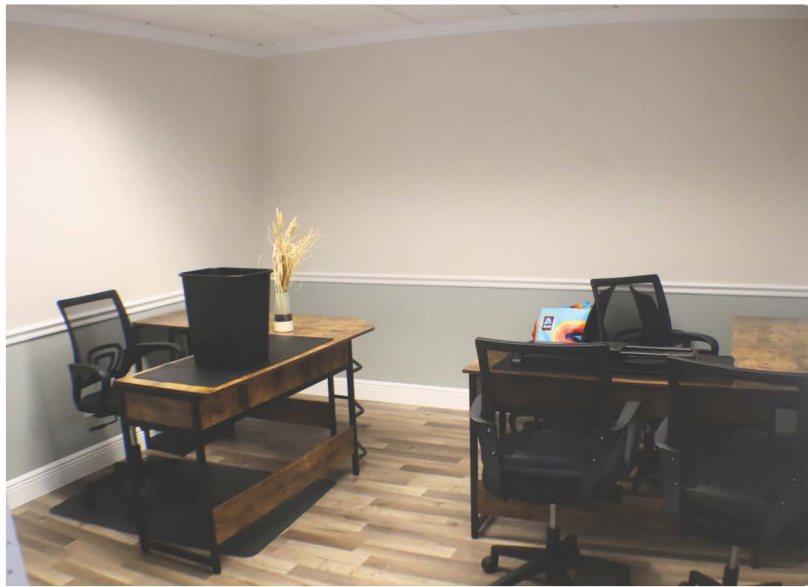
**FOR LEASE**

# PROFESSIONAL OFFICE



**1,350 +/- SQFT**

**7434 S Federal Highway, Port Saint Lucie, FL 34952  
Marlin Professional Center**



**Call or text 954-224-8773 for more information!**



**JOE PELAYO, CCIM, SIOR**  
 BROKER  
[trec@joepelayo.com](mailto:trec@joepelayo.com)  
**954.224.8773**

**TREC**  
 Total Real Estate Consultants Inc.  
[www.trecfl.com](http://www.trecfl.com)

**GEORGE PELAYO**  
 BROKER ASSOCIATE  
[george@trecfl.com](mailto:george@trecfl.com)  
**954.482.1330**



NOTICE: This information has been obtained from sources believed to be reliable but has not been verified. No warranty or representation, express or implied, is made as to the condition/legal adjustments of the property (or properties) referenced or as to the accuracy or completeness of the information contained, and same is submitted subject to errors, omissions, change of price, retail or other conditions, including but not limited to withdrawal without notice, and to any special listing conditions imposed by the property owner.