



# NORTH CAUSEWAY OFFICE CONDOS

3801 N Causeway Blvd, Suite 205-207, Metairie, LA 70002

MATT EATON, CCIM • PARTNER

OFFICE: 504.414.0703

MOBILE: 504.339.2136

matt@matteatonccim.com



## PROPERTY DESCRIPTION

Southeast Commercial is pleased to offer, for sale or lease, two combined office condos in a well maintained building at the foot of the Causeway Bridge. Featuring 1,392 sf of office space with a reception area, 2-3 offices, large conference room, and bullpen area along with a file/copy room. The building was recently renovated and has ample parking. The condos currently house a law office, but the configuration will work for any type of professional office.

## OFFERING SUMMARY

Sale Price:	\$365,000
Lease Rate:	\$25.86/SF/Yr (Modified Gross)
Available Space:	1,392 SF

DEMOGRAPHICS	1 MILE	3 MILES	5 MILES
Total Households	5,832	47,094	97,048
Total Population	13,279	105,357	218,078
Average HH Income	\$107,509	\$106,561	\$105,448

OFFICE BUILDING FOR SALE OR LEASE

## PROPERTY SUMMARY



SOUTHEAST COMMERCIAL REAL ESTATE



# NORTH CAUSEWAY OFFICE CONDOS

3801 N Causeway Blvd, Suite 205-207, Metairie, LA 70002

MATT EATON, CCIM • PARTNER

OFFICE: 504.414.0703

MOBILE: 504.339.2136

matt@matteatonccim.com



OFFICE BUILDING FOR SALE OR LEASE

ADDITIONAL PHOTOS

SOUTHEAST COMMERCIAL REAL ESTATE | 2310 19th Street Gulfport, MS 39501 | <https://southeastcre.com>



SOUTHEAST  
COMMERCIAL  
REAL ESTATE



# NORTH CAUSEWAY OFFICE CONDOS

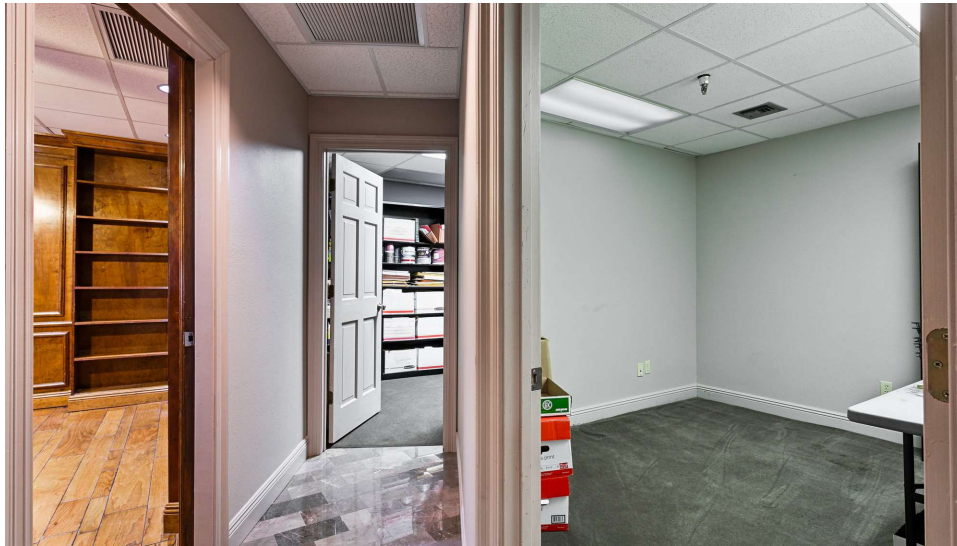
3801 N Causeway Blvd, Suite 205-207, Metairie, LA 70002

MATT EATON, CCIM • PARTNER

OFFICE: 504.414.0703

MOBILE: 504.339.2136

matt@matteatonccim.com



OFFICE BUILDING FOR SALE OR LEASE

ADDITIONAL PHOTOS

SOUTHEAST COMMERCIAL REAL ESTATE | 2310 19th Street Gulfport, MS 39501 | <https://southeastcre.com>



SOUTHEAST  
COMMERCIAL  
REAL ESTATE



# NORTH CAUSEWAY OFFICE CONDOS

3801 N Causeway Blvd, Suite 205-207, Metairie, LA 70002

MATT EATON, CCIM • PARTNER

OFFICE: 504.414.0703

MOBILE: 504.339.2136

matt@matteatonccim.com



OFFICE BUILDING FOR SALE OR LEASE

AERIAL



SOUTHEAST COMMERCIAL REAL ESTATE



# NORTH CAUSEWAY OFFICE CONDOS

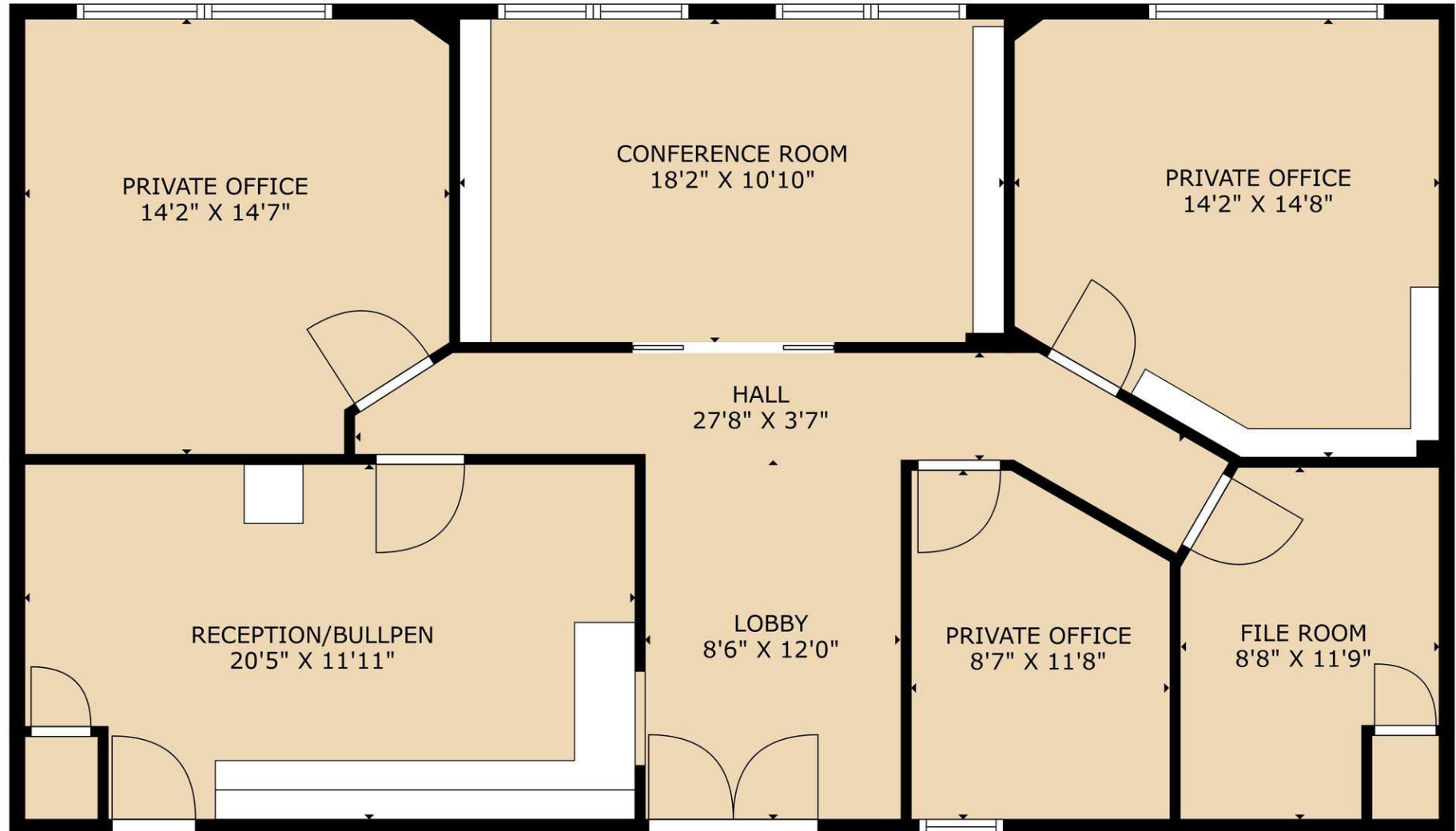
3801 N Causeway Blvd, Suite 205-207, Metairie, LA 70002

MATT EATON, CCIM • PARTNER

OFFICE: 504.414.0703

MOBILE: 504.339.2136

matt@matteatonccim.com



OFFICE BUILDING FOR SALE OR LEASE

FLOOR PLAN



SOUTHEAST  
COMMERCIAL  
REAL ESTATE

SOUTHEAST COMMERCIAL REAL ESTATE | 2310 19th Street Gulfport, MS 39501 | <https://southeastcre.com>

