



# YAMATO OFFICE CENTER



**NAI** Merin Hunter  
Codman, Inc.

Commercial Real Estate Services, Worldwide.



For Lease  
±1,067-27,253 SF  
Premier Boca Raton  
Office/Medical Space

**Move-In Ready Spaces  
& Full Floor with Signage**



## Yamato Office Center

999 & 1001 Yamato Road  
Boca Raton, FL 33431



### Property Features:

- NEW outdoor seating lounge
- Fantastic office space with beautiful lobbies, lush landscaping, and a great corporate park location near the best of Boca Raton
- Amenities include keycard access, tenant conference facility, outside seating area, 24/7 HVAC, and ample parking with covered available
- Separately metered electric at 1001 Yamato
- Direct visibility and access from Yamato Road
- Just 1 minute from I-95, 7 minutes to the Florida Turnpike, and near two major hospitals

### Key Highlights:



Fantastic location  
near outstanding  
lifestyle amenities



Variety of floor  
plan sizes to suit  
your needs



Medical use  
approved

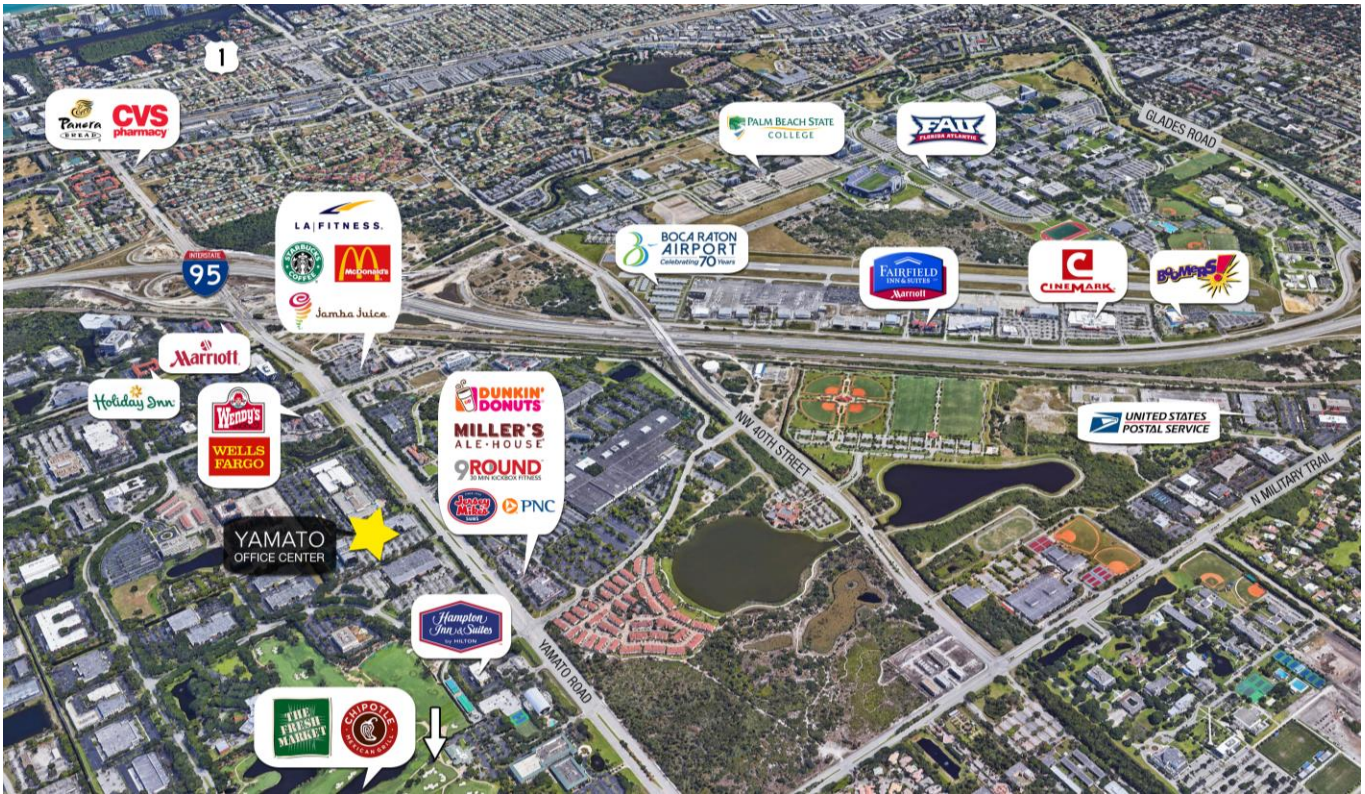
**Richard W. Brockney**  
Director | [rbrockney@mhcreal.com](mailto:rbrockney@mhcreal.com)

**Neil E. Merin, SIOR, CCIM**  
Chairman | [merinlistings@mhcreal.com](mailto:merinlistings@mhcreal.com)





FOR LEASE: YAMATO OFFICE CENTER  
**Move-In Ready Office Space Near I-95**  
999-1001 YAMATO ROAD, BOCA RATON, FL 33431



## Strategic Location with Exceptional Neighboring Amenities

This Class-A office center with medical zoning offers easy access to I-95 and is well-located in a blossoming live-work-play environment with over 2,500 newly developed residential units nearby.

Yamato Office Center is minutes away from countless dining, retail, and lifestyle amenities, with a Tri-Rail stop within walking distance and a planned Brightline stop.



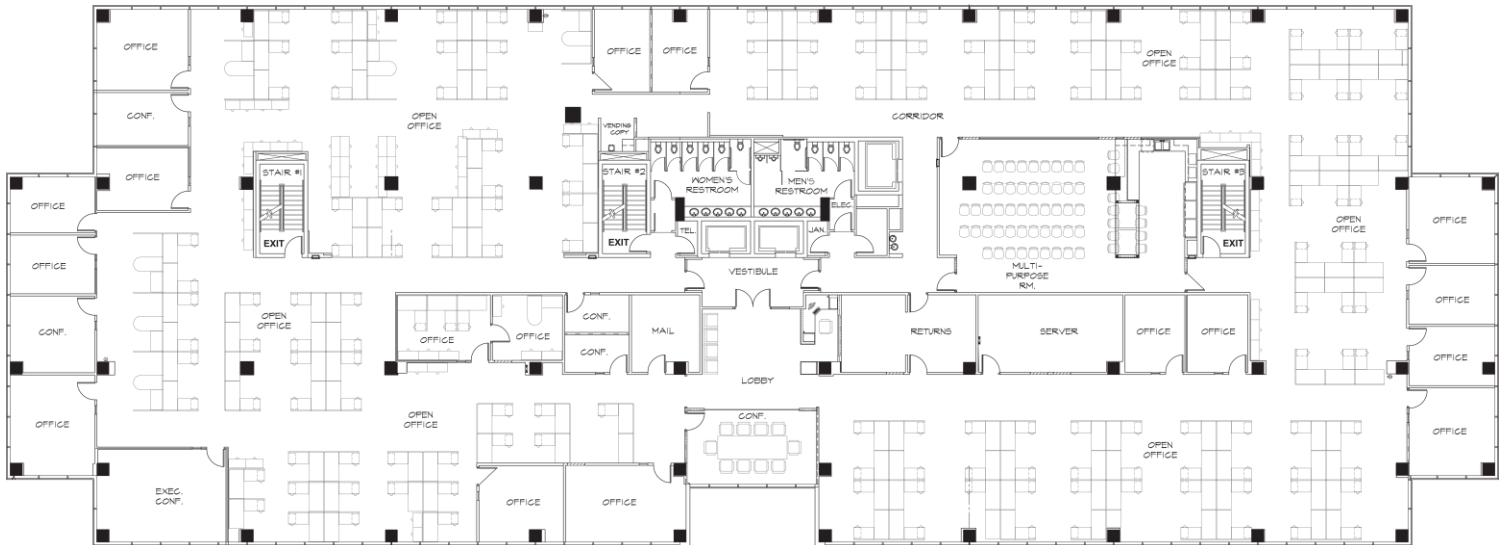
## NEW Outdoor Lounge





FOR LEASE: YAMATO OFFICE CENTER

# Full Floor with Building & Monument Signage Available

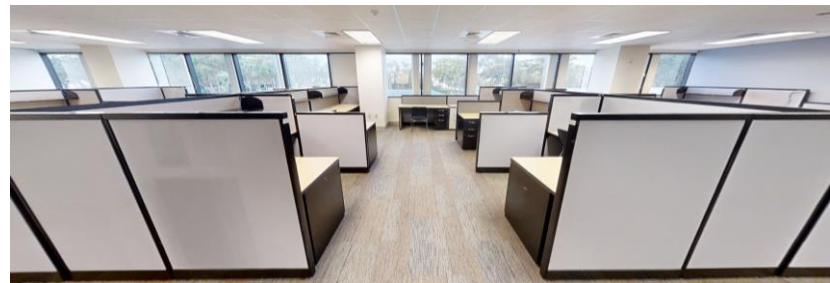


## 1001 - Suite 200 ±8,000-24,031 SF

- Rare plug & play corporate HQ opportunity, with functional layout & furniture available
- Mostly open plan, divisible from ±8,000 SF
- Multiple signage opportunities
- Abundant natural light through panoramic window lines
- Modern build-out including glass sidelights, diverse meeting rooms, open work areas, a well-equipped kitchen/breakroom with bar and round table seating, and more



CLICK HERE  
FOR 3D TOUR!



For More Information:

Richard W. Brockney or Neil E. Merin, SIOR, CCIM | 561 471 8000 | www.mhcreal.com

# Brand New Spec Suites Coming November '24

## 999 Building Second Floor

±1,671-16,613 SF

- Efficient layouts designed for productivity
- Can be leased individually or combined for more space



For More Information: 561 471 8000

Your Leasing  
Team:

Richard W. Brockney  
Director | [rbrockney@mhcreal.com](mailto:rbrockney@mhcreal.com)

Neil E. Merin, SIOR, CCIM  
Chairman | [merinlistings@mhcreal.com](mailto:merinlistings@mhcreal.com)