



OFFICE | WAREHOUSE | SHOWROOM | STUDIO | INDUSTRIAL

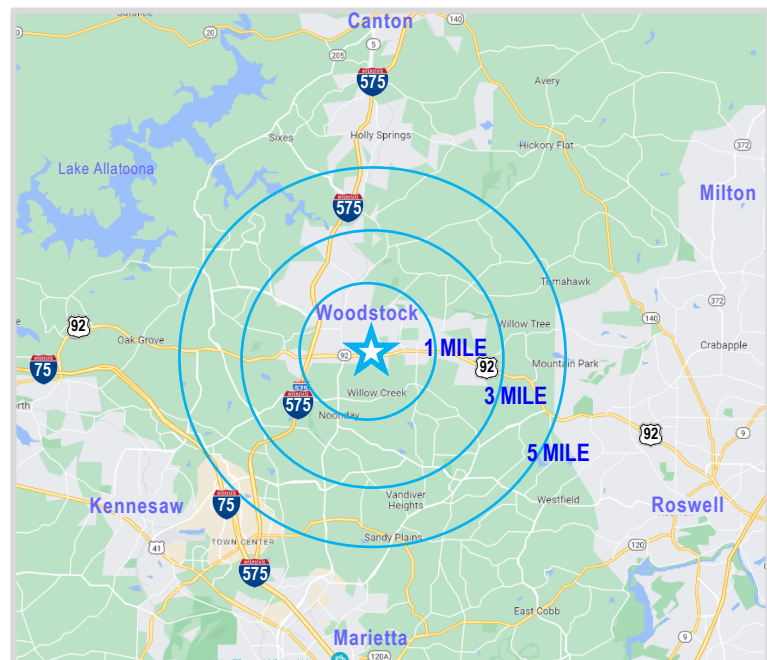
PROFILE

- 8,128 SF building with overhead door access in every suite and 16' to 18' ceiling heights in the warehouse spaces
- Two access points into the center
- Ample parking with approximately 30 spaces
- 1 suite currently available:

Suite 700 - 1,492 SF - Warehouse / Office combination
End Unit

LOCATION

- Excellent Woodstock location convenient to Roswell, Marietta, Kennesaw, Canton and Milton
- Just off interstate 575 with traffic counts of 103,000 VPD
- Traffic counts on 92 / Alabama Road of 47,100 VPD
- Densely populated area with over 177,000 people in a 5 mile radius
- Income above \$120,000 in one, three and five mile rings



DEMOGRAPHICS	1 MILE	3 MILE	5 MILE
Total Population (2024)	9,144	69,866	177,143
Households	3,679	26,802	65,528
Average HH Income	\$122,027	\$129,133	\$136,457



AERIAL PERSPECTIVE

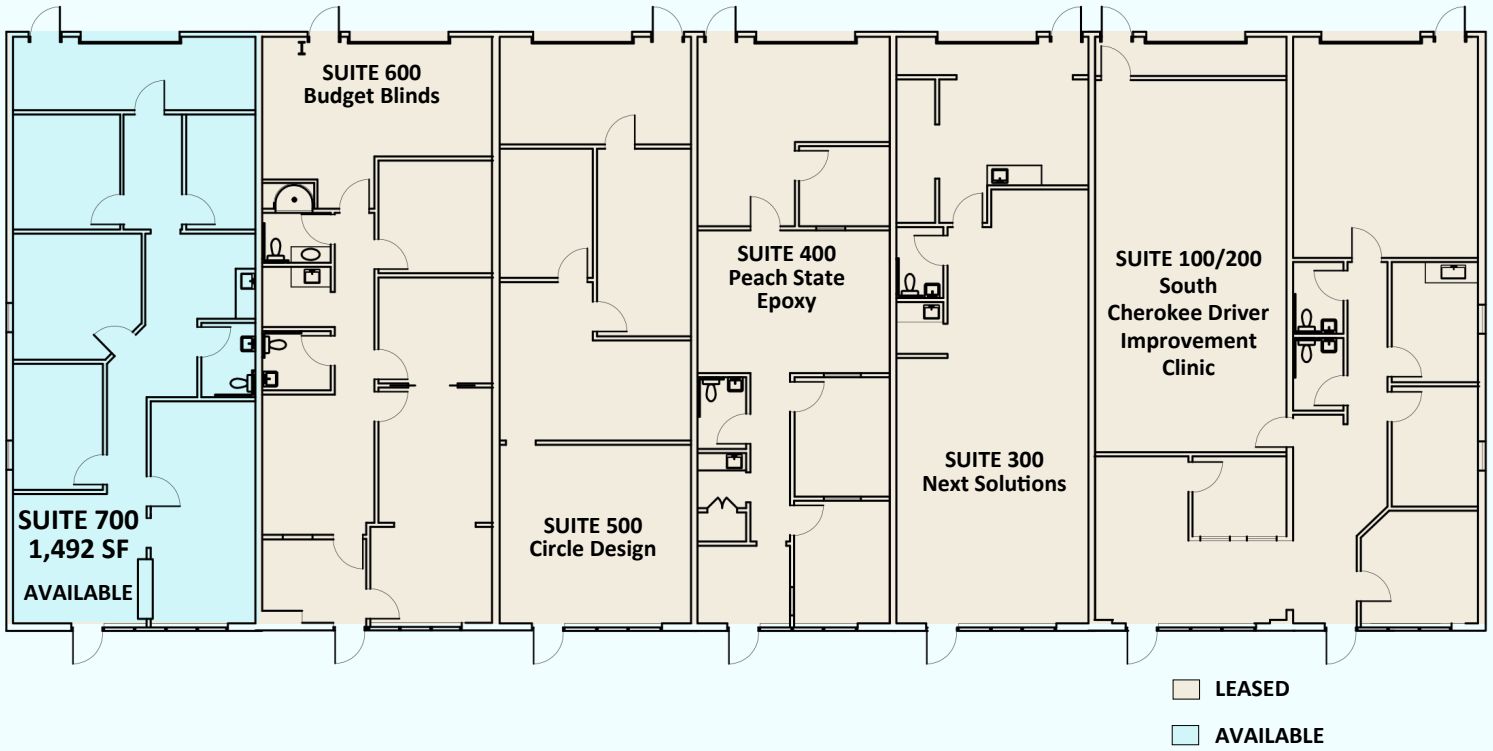


SITE PLAN





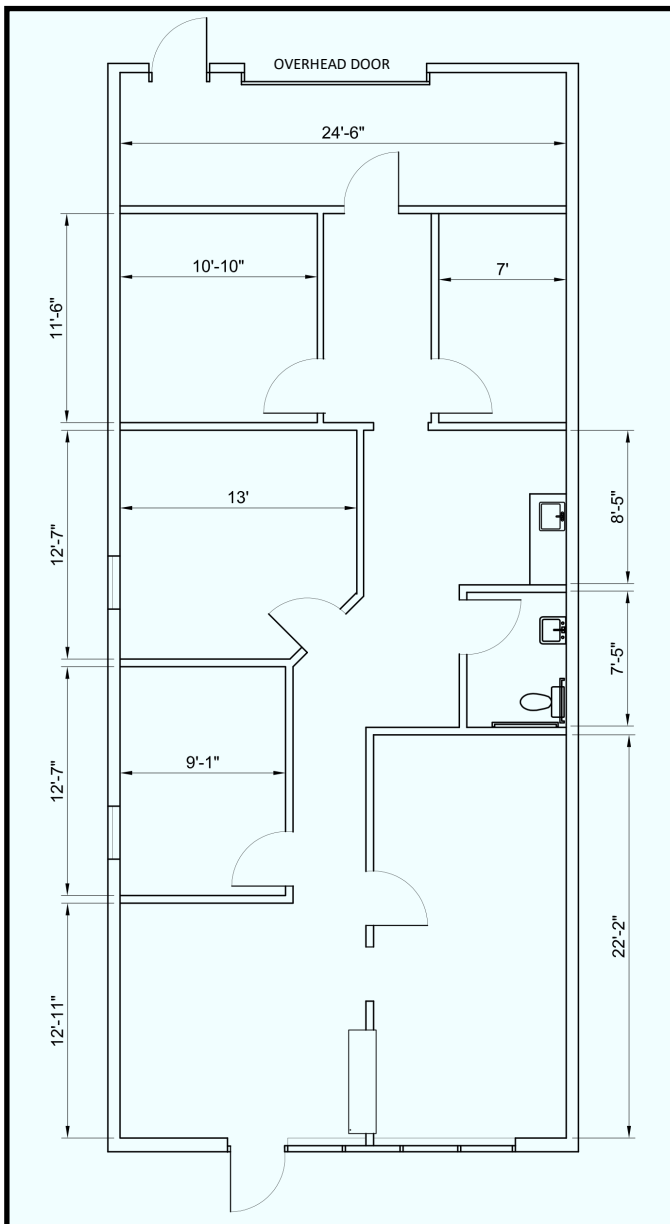
FLOOR PLAN



SUITE 700

1,492 SF

- Warehouse | Office Combination
- Overhead Door Access
- 16 - 17 foot ceiling height in Warehouse
- Numerous windows offer abundant natural light
- Breakroom and lavatory





SUITE 700 - PHOTO GALLERY

