

56,224 SF Industrial Warehouse

3601 SE Dixie Hwy, Stuart, FL 34997

NAI Southcoast

WITHAM
AIRFIELD

St. Lucie River



SE JEFFERSON ST

SE DIXIE HWY

14,000 AADT



Douglas Legler

Principal | Broker Associate
+1 772 405 7778
douglas@naisouthcoast.com
www.naisouthcoast.com

Casey Combs

Sales Associate
+1 772 285 8769
ccombs@naisouthcoast.com
www.naisouthcoast.com

FOR SALE:

\$8,700,000

56,224 SF Industrial Warehouse

3601 SE Dixie Hwy, Stuart, FL 34997

Property Features

| | |
|----------------|---------------------------------|
| Building Type: | Industrial/Warehouse |
| Building Size: | 56,244 SF |
| Acres: | 2.68 Acres |
| Year Built: | 1975 |
| Sale Price: | \$8,700,000 |
| Daily Traffic: | 14,000 AADT on NW Dixie Highway |

Property Overview

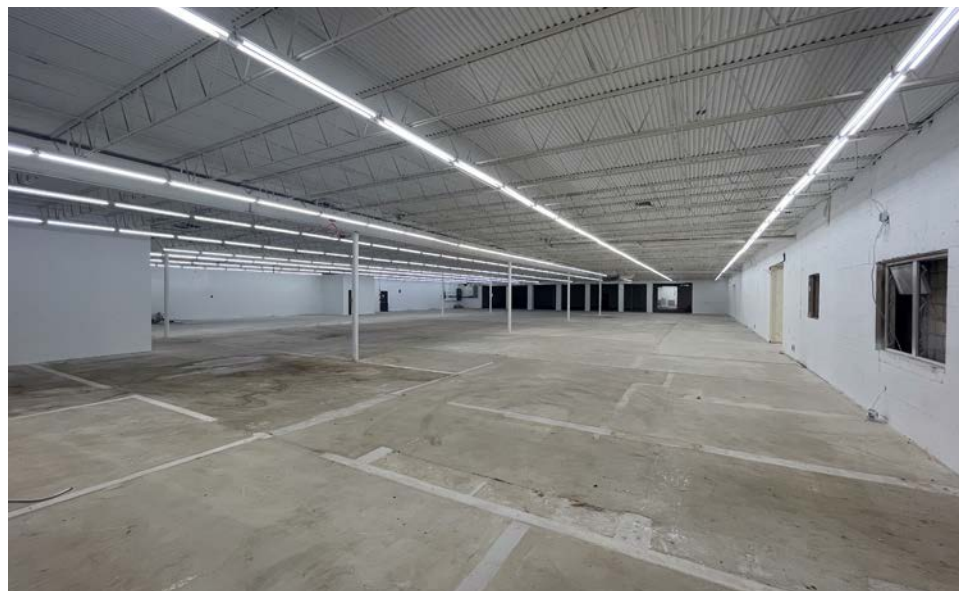
This concrete block industrial building is functional with plenty of bulk space, dock-high and grade level loading bays plus fenced yard space.

All space is 100% air conditioned with LED lighting.

The property has street access on three sides for efficient use. Additional roll-up doors and parking may be added.

Nearby to a plentiful labor and a skilled workforce.

Easy access to US Hwy 1, I-95 and the Florida Turnpike make this property ideal to serve the Treasure Coast and beyond.



56,224 SF Industrial Warehouse

3601 SE Dixie Hwy, Stuart, FL 34997

Looking East



SE JEFFERSON ST

SE DIXIE HWY

14,000 AADT



56,224 SF Industrial Warehouse

3601 SE Dixie Hwy, Stuart, FL 34997



56,224 SF Industrial Warehouse

3601 SE Dixie Hwy, Stuart, FL 34997

Photos



56,224 SF Industrial Warehouse

3601 SE Dixie Hwy, Stuart, FL 34997

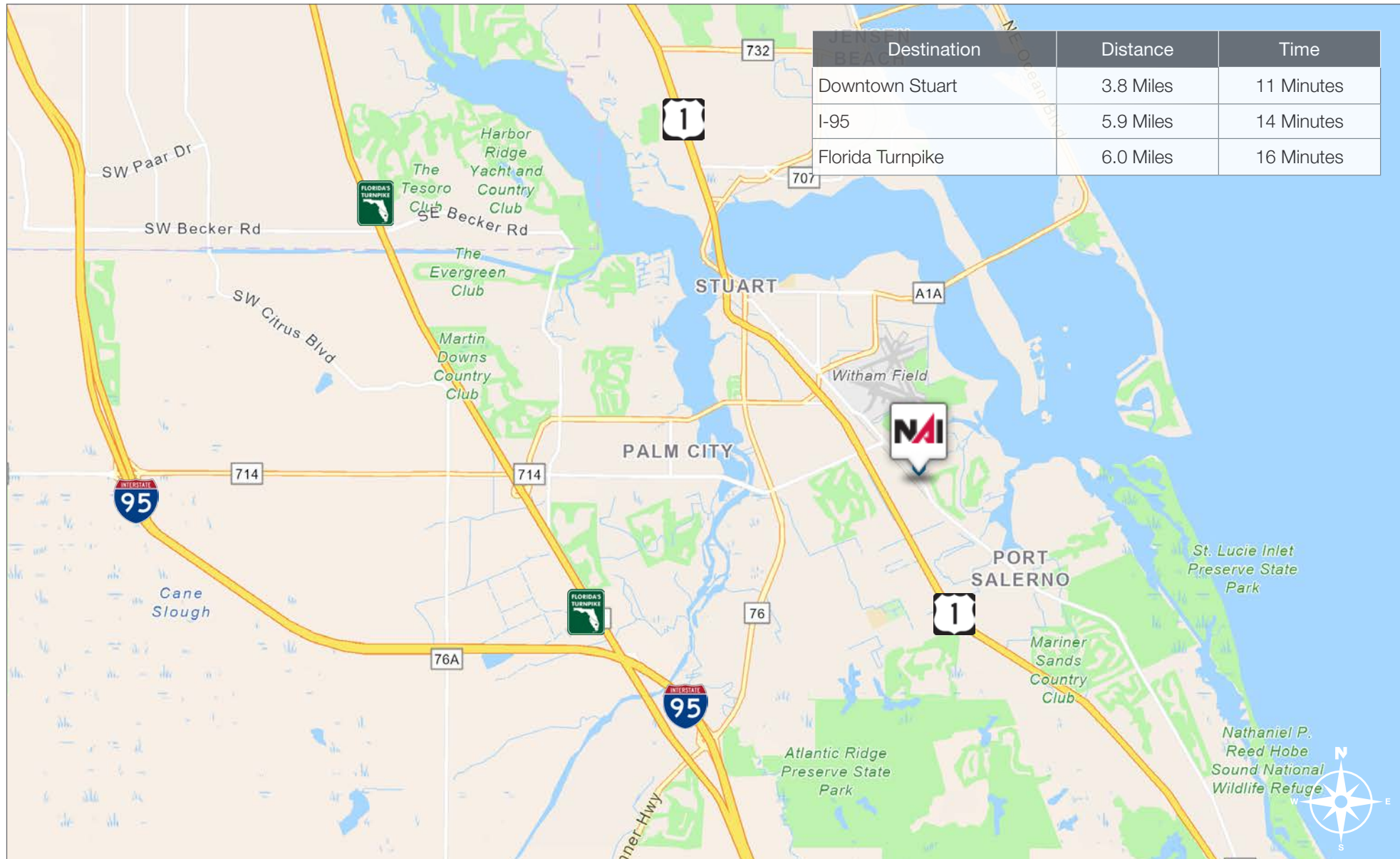
Interior Photos



56,224 SF Industrial Warehouse

3601 SE Dixie Hwy, Stuart, FL 34997

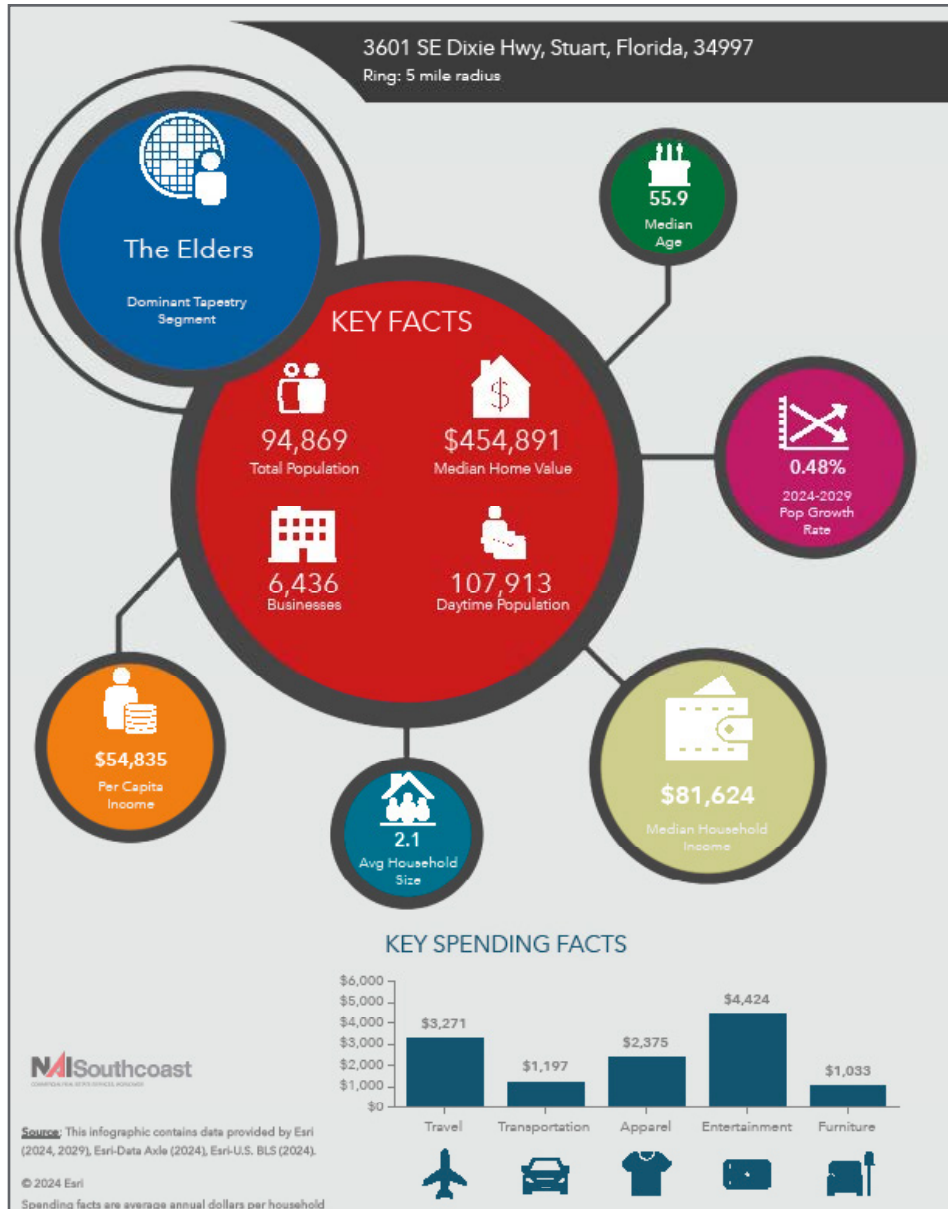
Drive Time



56,224 SF Industrial Warehouse

3601 SE Dixie Hwy, Stuart, FL 34997

2024 Demographics



Population

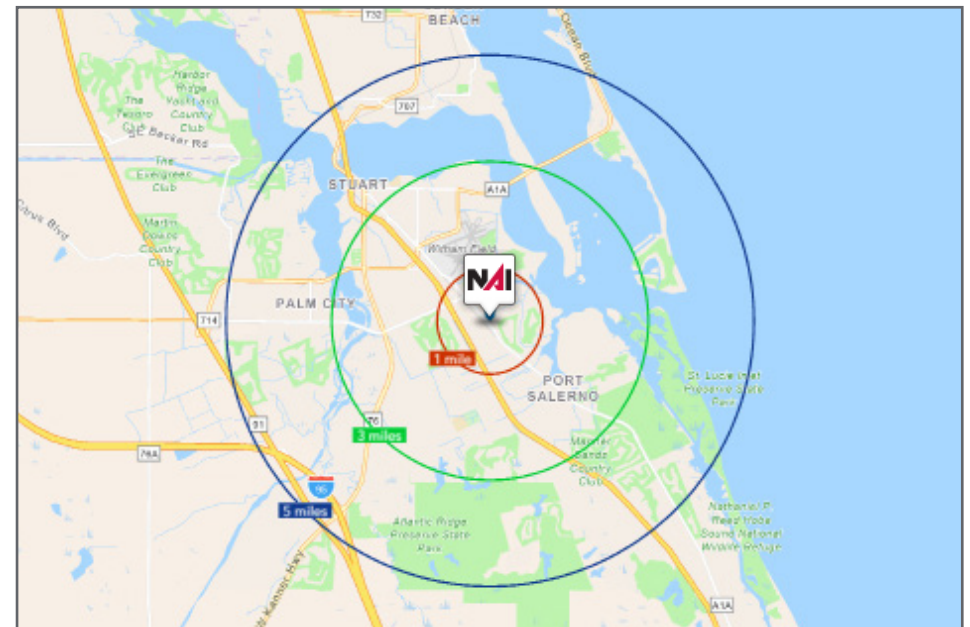
- 1 Mile: 5,558
- 3 Mile: 52,780
- 5 Mile: 94,869

Average Household Income

- 1 Mile: \$93,872
- 3 Mile: \$102,961
- 5 Mile: \$120,217

Median Age

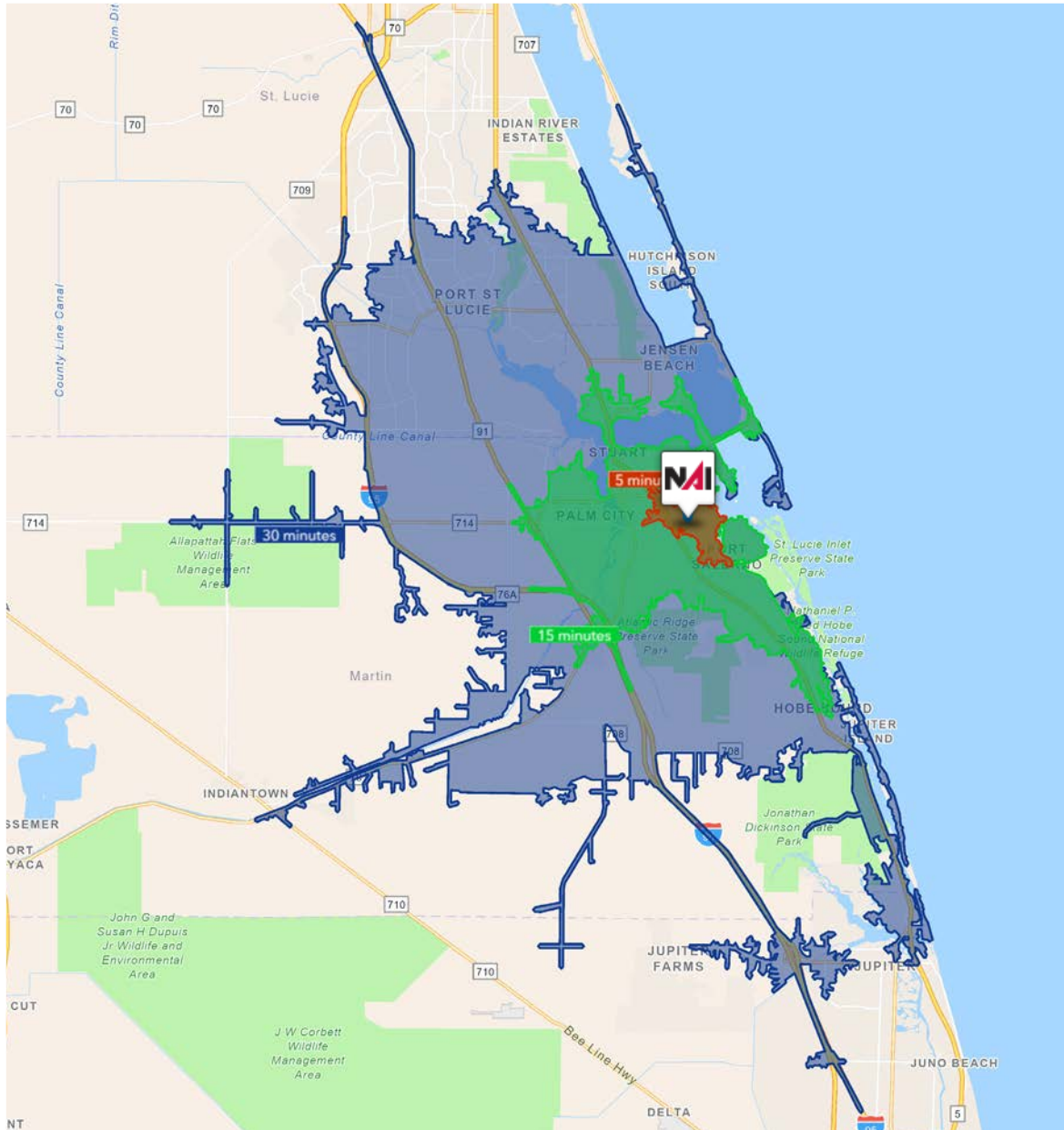
- 1 Mile: 37.0
- 3 Mile: 52.4
- 5 Mile: 55.9



56,224 SF Industrial Warehouse

3601 SE Dixie Hwy, Stuart, FL 34997

Drive Time



| 5 Minutes | 15 Minutes | 30 Minutes |
|---|---|---|
| 7,373 2010 Population | 84,050 2010 Population | 270,672 2010 Population |
| 7,938 2024 Population | 92,158 2024 Population | 329,001 2024 Population |
| 7.08% 2010-2024 Population Growth | 9.10% 2010-2024 Population Growth | 21.55% 2010-2024 Population Growth |
| (0.21)% 2024-2029 (Annual) Est. Population Growth | 0.37% 2024-2029 (Annual) Est. Population Growth | 1.12% 2024-2029 (Annual) Est. Population Growth |
| 42.6 2024 Median Age | 54.2 2024 Median Age | 49.1 2024 Median Age |
| \$103,986 Average Household Income | \$116,128 Average Household Income | \$113,087 Average Household Income |
| 35.9% Percentage with Associates Degree or Better | 47.8% Percentage with Associates Degree or Better | 45.4% Percentage with Associates Degree or Better |
| 45.0% Percentage in White Collar Profession | 61.0% Percentage in White Collar Profession | 59.6% Percentage in White Collar Profession |

County Overview

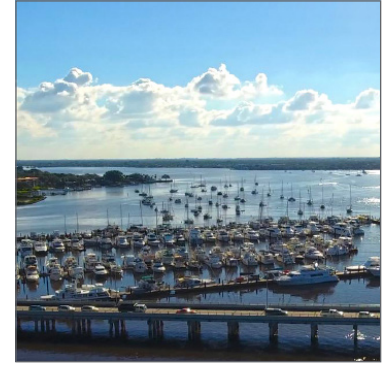
Martin County, Florida

The cities that make up Martin County include Jensen Beach/Rio, Stuart/Sewall's Point, Hutchinson Island, Hobe Sound, Jupiter/ Tequesta, Palm City, Port Salerno and Indiantown. Martin County is a wonderful place to visit and live, with beaches, golf, fishing and boating. The County boasts arts, quaint downtowns with shops, gourmet dining, galleries, museums, historic places, festivals and more.

Martin County is for...

The golf enthusiast... Martin County is home to over 35 world-class golf courses all within a 15-mile radius. The sun worshiper... The County offers its visitors and residents alike some of the finest beaches on the east coast. The discriminating arts shopper... More than 20 galleries participate in a monthly First Thursday gallery night. Many of these galleries are in the historic downtowns of Stuart, Jensen Beach, Port Salerno and Hobe Sound. The music lover... The historic Lyric Theatre offers a wide-array of first class talent nearly 300 days a year... This acoustically amazing theatre features concerts for all music lovers, from classical to rock and roll, and theatrical performances by local and national talent.

Mark your calendars for a plethora of events to look forward to in Martin County, Florida. The Stuart Air Show, Stuart Boat Show, ArtsFest, and the Martin County Fair are just some of the many events taking place throughout the year. The Treasure Coast Children's Museum, located at Indian Riverside Park, is a great place for kids and families, offering a water play area, fishing, and a riverfront view. Often, there are events in the park including concerts, orchid shows, and more. Indian Riverside Park also features the Maritime and Yachting Museum. Hutchinson Island is home to the Elliott Museum which celebrates the genius of innovation, creativity and the historical events of Martin County. Named after the prolific inventor Sterling Elliott, the museum hosts permanent exhibits showcasing Model A Trucks, early transportation, the history of Stuart and its surrounding regions, and baseball memorabilia. For the scientifically minded and curious kids, the Florida Oceanographic Coastal Center offers fun opportunities to learn about our local ecosystem.



City Overview

City of Stuart, Florida

Stuart, Florida is located on Florida's East Coast, which borders the St. Lucie River and West of the Indian River. The climate is pleasant with mild winters and warm summers. The annual average temperature is 72 degrees. Annual rainfall averages 60 inches.

Stuart is famed for its exceptional sailfishing and all other types of sport fishing. You can enjoy ocean fishing, river and bay fishing, and fresh water fishing. The North and South forks of the St. Lucie River are tropical wonderlands for cruises. Stuart has quaint older neighborhoods in the downtown area, including a mixture of townhomes and condominiums. Stuart's successful revitalization program has given the Downtown area a pleasant ambiance, with shops and restaurants lining the streets.

The top major employers are, Cleveland Clinic Hospital, Vought Aircraft, Municipal Government, and thousands of successful small businesses. The economy is driven by retail service, hospitality, construction and government sectors located throughout the city.

At the present time, Stuart is a growing community, annexing new properties north and south of the city, currently 6.25 square miles. Revitalization continues in the Potsdam section of the downtown area as well as North of the Roosevelt Bridge. Completed in 1996, the Roosevelt Bridge, is a prominent feature in the area, allowing for easy connectivity and accessibility to Stuart's Public Beaches.

Presented By



Douglas Legler

Principal | Broker Associate
+1 772 405 7778
douglas@naisouthcoast.com



Casey Combs

Sales Associate
+1 772 285 8769
ccombs@naisouthcoast.com

56,224 SF Industrial Warehouse

3601 SE Dixie Hwy, Stuart, FL 34997



FOR SALE:

\$8,700,000