

# OFFICE SPACE FOR LEASE

185 Roberson Mill Road  
Milledgeville, GA 31061



Summary

Area Info

Photos

Floor Plans

Aerial

Site Map



## CONTACT

**Patty Burns, CCIM, ALC**  
478-746-9421 Office  
478-951-5100 Cell  
[patty@fickling.com](mailto:patty@fickling.com)

**Trip Wilhoit, CCIM, ALC**  
478-746-9421 Office  
478-960-4080 Cell  
[trip@fickling.com](mailto:trip@fickling.com)

**Jim Fain, GRI, CRS, ABR**  
478-997-6400 Office  
478-363-2145 Cell  
[jfain@fickling.com](mailto:jfain@fickling.com)



577 Mulberry St, Suite 1100  
Macon, GA 31201  
478.746.9421 Office  
<https://commercial.fickling.com>

# OFFICE SPACE FOR LEASE

185 Roberson Mill Road  
Milledgeville, GA 31061



Summary

Area Info

Photos

Floor Plans

Aerial

Site Map

## PROPERTY INFORMATION

### BUILDING

<b>Property Address:</b>	185 Roberson Mill Road Milledgeville, GA 31061
<b>County:</b>	Baldwin
<b>Total Size:</b>	3,772 SF
<b>Available:</b>	±1,900 SF
<b>Year Built:</b>	1986
<b>Utilities:</b>	All available
<b>Parking:</b>	11 spaces
<b>Traffic Count:</b>	20,800 Vehicles Per Day

### SITE

<b>Site Size:</b>	0.33 Acres
<b>Parcel ID:</b>	068 010R
<b>Zoning:</b>	None – Located in Baldwin County

Demographics 2024	1 Mile	3 Miles	5 Miles
Population	1,539	15,956	27,696
Avg HH Income	\$111,949	\$76,483	\$93,914
Median Age	36.6	29.4	34.3

**LEASE PRICE: \$3,500/Month**  
**Tenant Pays Utilities**

### CONTACT

**Patty Burns, CCIM, ALC**  
478-746-9421 Office  
478-951-5100 Cell  
patty@fickling.com

**Trip Wilhoit, CCIM, ALC**  
478-746-9421 Office  
478-960-4080 Cell  
trip@fickling.com

**Jim Fain, GRI, CRS, ABR**  
478-997-6400 Office  
478-363-2145 Cell  
jfain@fickling.com



577 Mulberry St, Suite 1100  
Macon, GA 31201  
478.746.9421 Office  
<https://commercial.fickling.com>

# OFFICE SPACE FOR LEASE

185 Roberson Mill Road  
Milledgeville, GA 31061



Summary

Area Info

Photos

Floor Plans

Aerial

Site Map

## AREA INFORMATION

### SPACE

±1,900 SF former real estate office available for lease! Floor plan consists of a lobby, five (5) offices, restroom and break room area, and a storage closet.

### LOCATION

Located on Roberson Mill Road, this property neighbors Northside Office Park, Dollar General, Lake Country Lanes, Citizens Bank of the South, Century 21, State Farm, Fouts Brothers, and many other offices and retail spaces.



### CONTACT

**Patty Burns, CCIM, ALC**  
478-746-9421 Office  
478-951-5100 Cell  
patty@fickling.com

**Trip Wilhoit, CCIM, ALC**  
478-746-9421 Office  
478-960-4080 Cell  
trip@fickling.com

**Jim Fain, GRI, CRS, ABR**  
478-997-6400 Office  
478-363-2145 Cell  
jfain@fickling.com



577 Mulberry St, Suite 1100  
Macon, GA 31201  
478.746.9421 Office  
<https://commercial.fickling.com>

# OFFICE SPACE FOR LEASE

185 Roberson Mill Road  
Milledgeville, GA 31061



Summary

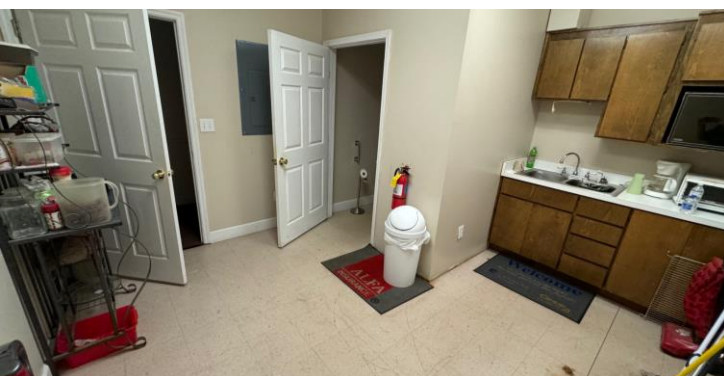
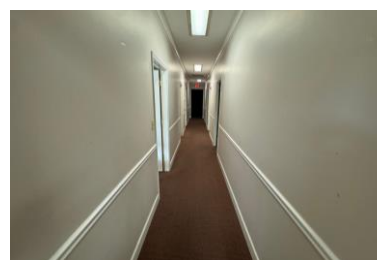
Area Info

Photos

Floor Plans

Aerial

Site Map



## CONTACT

**Patty Burns, CCIM, ALC**  
478-746-9421 Office  
478-951-5100 Cell  
patty@fickling.com

**Trip Wilhoit, CCIM, ALC**  
478-746-9421 Office  
478-960-4080 Cell  
trip@fickling.com

**Jim Fain, GRI, CRS, ABR**  
478-997-6400 Office  
478-363-2145 Cell  
jfain@fickling.com



577 Mulberry St, Suite 1100  
Macon, GA 31201  
478.746.9421 Office  
<https://commercial.fickling.com>

# OFFICE SPACE FOR LEASE

185 Roberson Mill Road  
Milledgeville, GA 31061



Summary

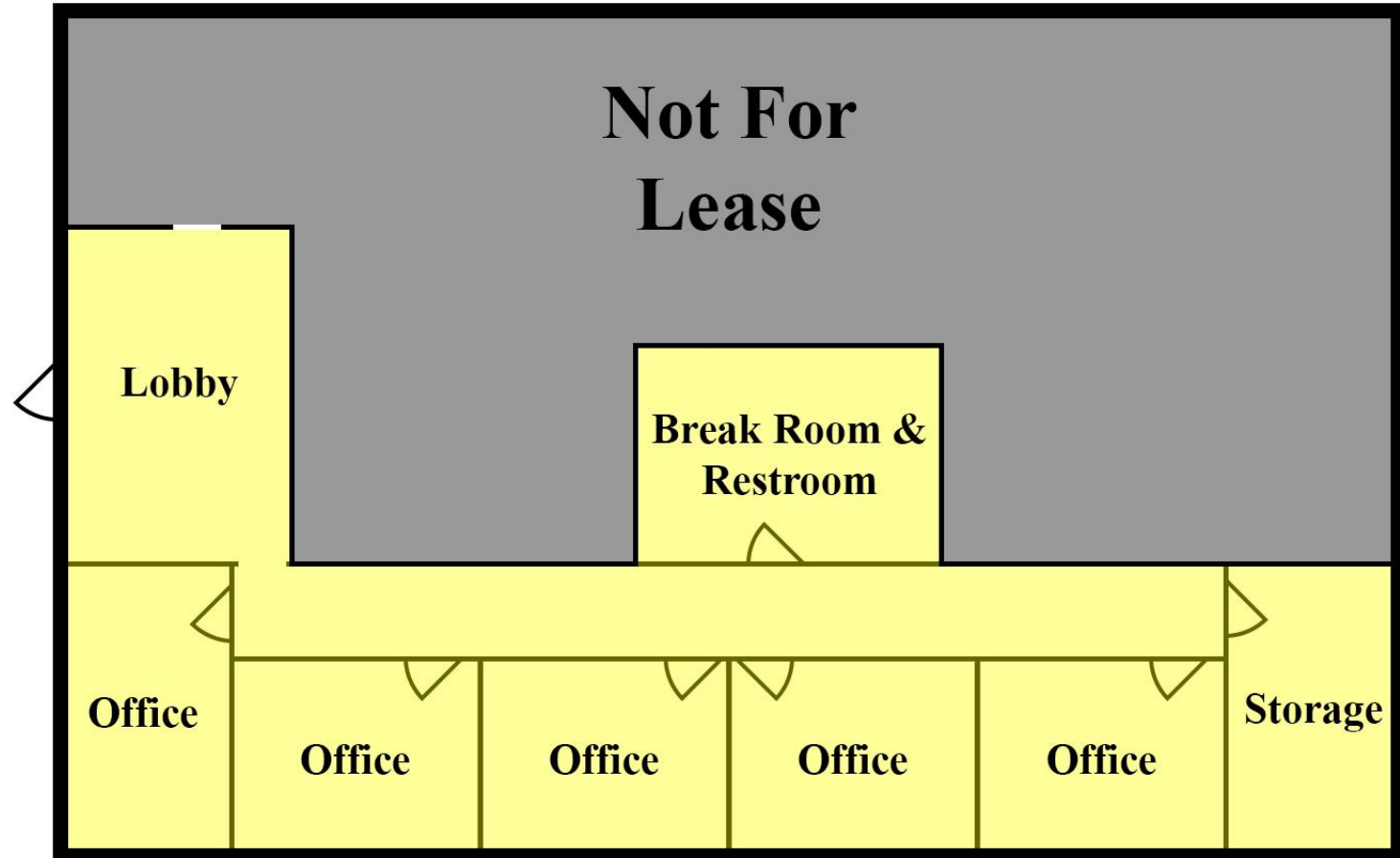
Area Info

Photos

Floor Plans

Aerial

Site Map



\*All measurements and all calculations of area are approximate and not guaranteed

## CONTACT

**Patty Burns, CCIM, ALC**  
478-746-9421 Office  
478-951-5100 Cell  
patty@fickling.com

**Trip Wilhoit, CCIM, ALC**  
478-746-9421 Office  
478-960-4080 Cell  
trip@fickling.com

**Jim Fain, GRI, CRS, ABR**  
478-997-6400 Office  
478-363-2145 Cell  
jfain@fickling.com



577 Mulberry St, Suite 1100  
Macon, GA 31201  
478.746.9421 Office  
<https://commercial.fickling.com>

# OFFICE SPACE FOR LEASE

185 Roberson Mill Road  
Milledgeville, GA 31061



Summary

Area Info

Photos

Floor Plans

Aerial

Site Map

## AERIAL



### CONTACT

**Patty Burns, CCIM, ALC**  
478-746-9421 Office  
478-951-5100 Cell  
patty@fickling.com

**Trip Wilhoit, CCIM, ALC**  
478-746-9421 Office  
478-960-4080 Cell  
trip@fickling.com

**Jim Fain, GRI, CRS, ABR**  
478-997-6400 Office  
478-363-2145 Cell  
jfain@fickling.com



577 Mulberry St, Suite 1100  
Macon, GA 31201  
478.746.9421 Office  
<https://commercial.fickling.com>

# OFFICE SPACE FOR LEASE

185 Roberson Mill Road  
Milledgeville, GA 31061



Summary

Area Info

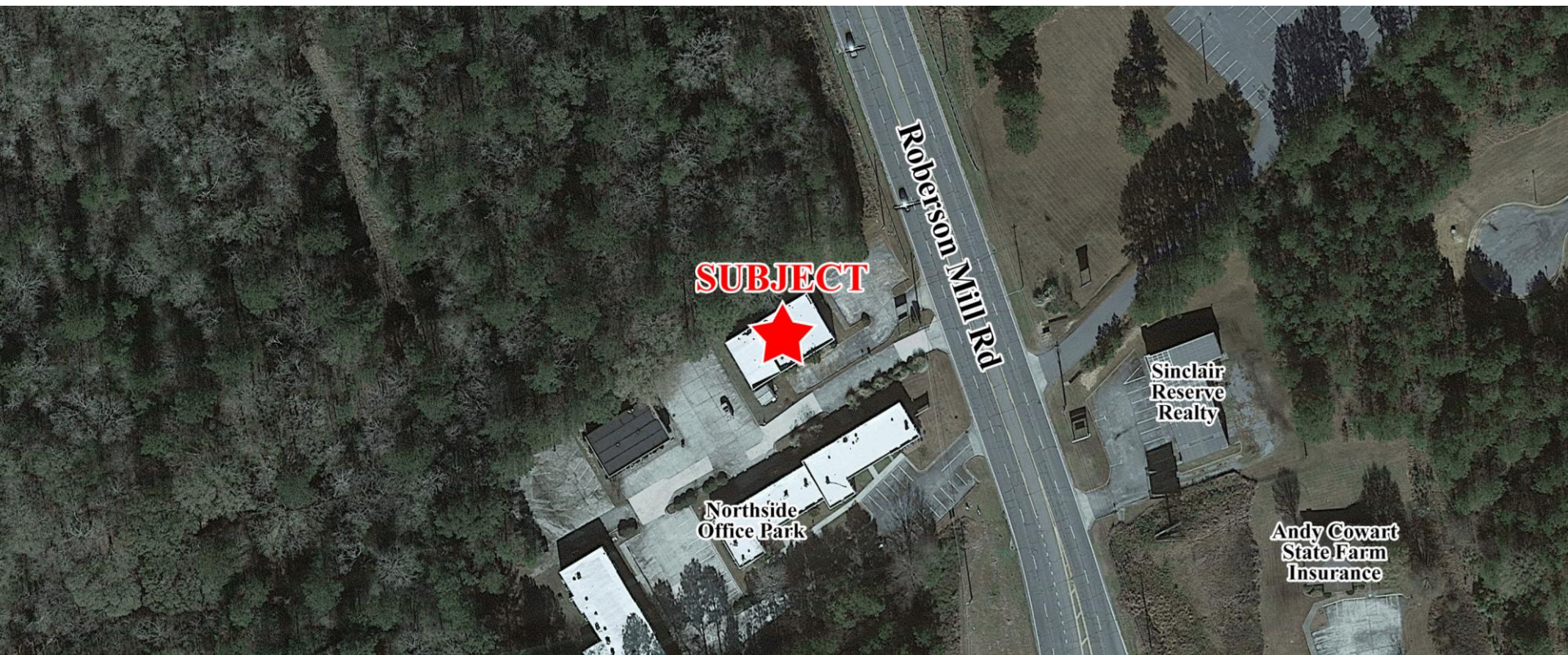
Photos

Floor Plans

Aerial

Site Map

## SITE MAP



### CONTACT

**Patty Burns, CCIM, ALC**  
478-746-9421 Office  
478-951-5100 Cell  
patty@fickling.com

**Trip Wilhoit, CCIM, ALC**  
478-746-9421 Office  
478-960-4080 Cell  
trip@fickling.com

**Jim Fain, GRI, CRS, ABR**  
478-997-6400 Office  
478-363-2145 Cell  
jfain@fickling.com



577 Mulberry St, Suite 1100  
Macon, GA 31201  
478.746.9421 Office  
<https://commercial.fickling.com>