

For Lease
±1,637-6,174 SF
Office Space



Commerce Pointe Silver

1818 S Australian Avenue
West Palm Beach, FL 33409

Property Features

- Fantastic leasing opportunity near Downtown West Palm Beach
- Four-story office building with a beautiful atrium lobby and move-in ready suites
- Excellent access to arterial roads
- Central Palm Beach County location with great airport access and minutes from Downtown West Palm Beach
- Near popular amenities like The Square, Grandview Market, Town of Palm Beach, the Governmental Center, and more

Key Features:



Great location
adjacent to I-95



Near the best of
the Palm Beaches



Lushly landscaped
with pond & lake views



Move-in ready office
suites available

For More Information:

Jason L. Sundook, SIOR

Principal | jsundook@mhcreal.com

Patrick Almand, Associate

C: 443 370 8655 | palmand@mhcreal.com

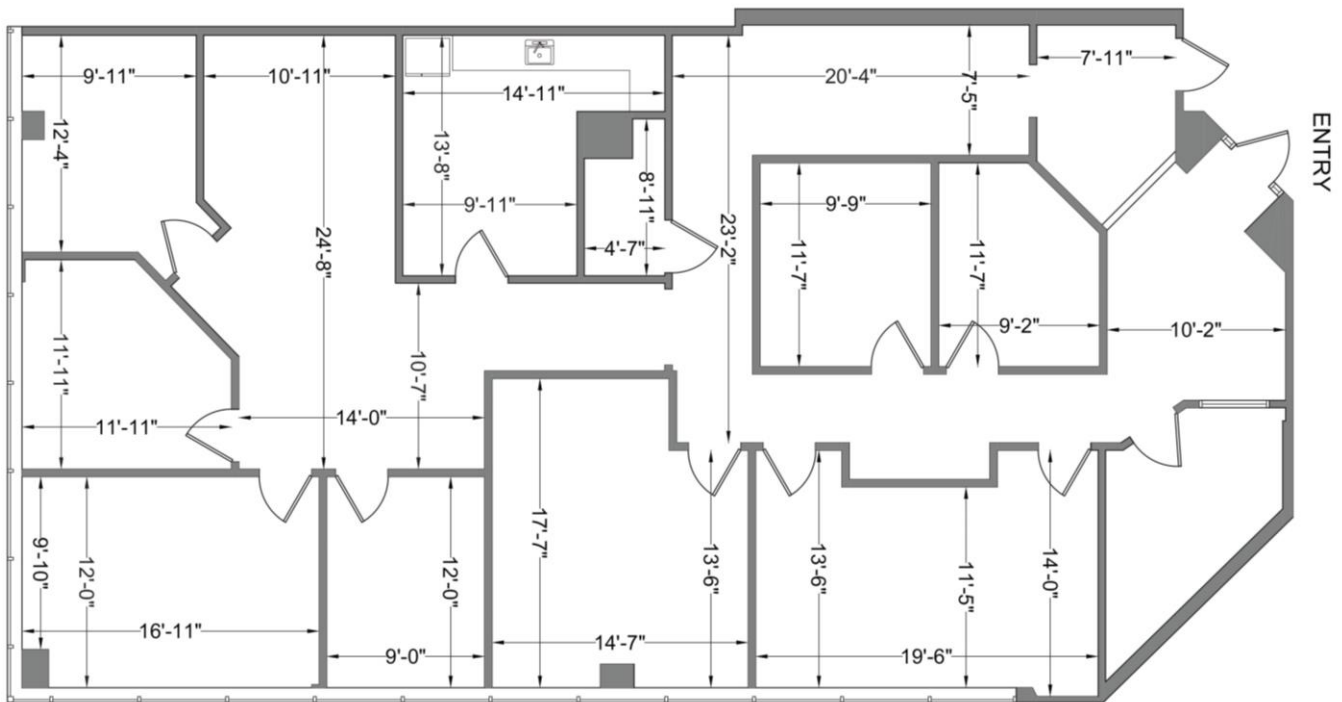


FOR LEASE: COMMERCE POINTE SILVER, WEST PALM BEACH

Modern & Move-In Ready Office Space

Suite 102 3,066 SF

Modern and move-in ready, ground-floor office space with multiple offices, a conference room, and kitchen/break area.



*Not to scale. Subject to error.



NO WARRANTY OR REPRESENTATION, EXPRESS OR IMPLIED, IS MADE AS TO THE ACCURACY OF THE INFORMATION CONTAINED HEREIN, AND THE SAME IS SUBMITTED SUBJECT TO ERRORS, OMISSIONS, CHANGE OF PRICE, OR WITHDRAWAL WITHOUT NOTICE.



561 471 8000



1601 Forum Place, Suite 700
West Palm Beach, FL 33401



www.mhcreal.com

FOR LEASE: COMMERCE POINTE SILVER, WEST PALM BEACH
Move-In Ready Office Space Near Downtown & I-95



**Your Professional Waterfront Oasis
IN AN UNBEATABLE WEST PALM BEACH LOCATION**

Welcome to Commerce Pointe Silver, a prime office building centrally located in West Palm Beach. The property offers stunning water views, meticulously maintained common areas, and a beautiful atrium lobby. Commuting is a breeze with easy access to I-95, Okeechobee Blvd., Brightline, and commuter rail.

Featuring an amazing location near the best of the Palm Beaches, move-in ready offices, and on-site property management, Commerce Pointe Silver offers high-quality workspace tailored for Palm Beach County professionals.

For More Information:

Jason L. Sundook, SIOR

Principal | jsundook@mhcreal.com

Patrick Almand, Associate

C: 443 370 8655 | palmand@mhcreal.com

**TAKE ADVANTAGE OF THIS STRATEGIC
LOCATION & MOVE-IN READY SUITES**

561 471 8000

