

EXECUTIVE SUMMARY

Village Shops of Merritt Island • 2137 N Courtenay Pkwy Merritt Island, FL 32953



OFFERING SUMMARY

Available SF: 727 - 830 SF

Lease Rate: \$16.00 SF/yr
(\$4.71 /sf NNN)

Lot Size: 1.37 Acres

Year Built: 1977

Building Size: 14,144 SF

Zoning: BU-1

PROPERTY OVERVIEW

Great neighborhood retail plaza in Merritt Island

Direct storefront parking available

Monument and building signage

LOCATION OVERVIEW

Retail storefronts on Merritt Island's major north/south artery.

Neighborhood center just north of Skyline Blvd.

DISTANCES:

.7 mile SR 528

1.5 miles to Merritt Island High School

2.7 miles to SR 520

JEFFERY T. ROBISON, CCIM

President | Broker
321.722.0707 X13
jeff@teamlbr.com

VITOR DE SOUSA, CCIM

Retail Sales & Leasing
321.722.0707 X15
vitor@teamlbr.com

Lightle Beckner Robison, Inc.

321.722.0707 • teamlbr.com
70 W. Hibiscus Blvd.,
Melbourne, FL 32901

Information contained herein has been obtained through sources deemed reliable but cannot be guaranteed as to its accuracy. A purchaser or lessee is expected to verify all information to his/her own satisfaction. Zoning information subject to change and not warranted. Always confirm current requirements with local governing agencies.

ADDITIONAL PHOTOS

Village Shops of Merritt Island • 2137 N Courtenay Pkwy Merritt Island, FL 32953



JEFFERY T. ROBISON, CCIM

President | Broker
321.722.0707 X13
jeff@teamlbr.com

VITOR DE SOUSA, CCIM

Retail Sales & Leasing
321.722.0707 X15
vitor@teamlbr.com

Lightle Beckner Robison, Inc.

321.722.0707 • teamlbr.com
70 W. Hibiscus Blvd.,
Melbourne, FL 32901

Information contained herein has been obtained through sources deemed reliable but cannot be guaranteed as to its accuracy. A purchaser or lessee is expected to verify all information to his/her own satisfaction. Zoning information subject to change and not warranted. Always confirm current requirements with local governing agencies.

AVAILABLE SPACES

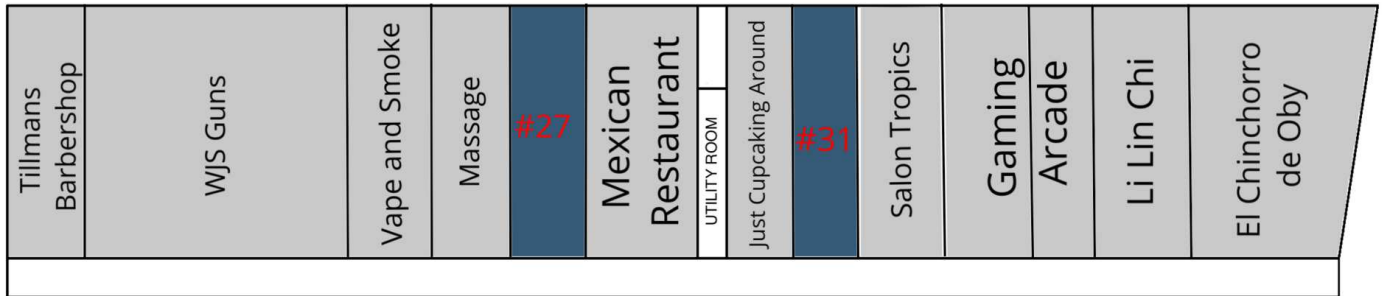
Village Shops of Merritt Island • 2137 N Courtenay Pkwy Merritt Island, FL 32953

LEASE TYPE | \$4.71/sf NNN

TOTAL SPACE | 727 - 830 SF

LEASE TERM | Negotiable

LEASE RATE | \$16.00 SF/yr



UNAVAILABLE

AVAILABLE

SUITE	TENANT	SIZE	TYPE	RATE
#27	Available	830 SF	\$4.71/sf NNN	\$16.00 SF/yr
#31	Available	727 SF	\$4.71/sf NNN	\$16.00 SF/yr

JEFFERY T. ROBISON, CCIM

President | Broker
321.722.0707 X13
jeff@teamlbr.com

VITOR DE SOUSA, CCIM

Retail Sales & Leasing
321.722.0707 X15
vitor@teamlbr.com

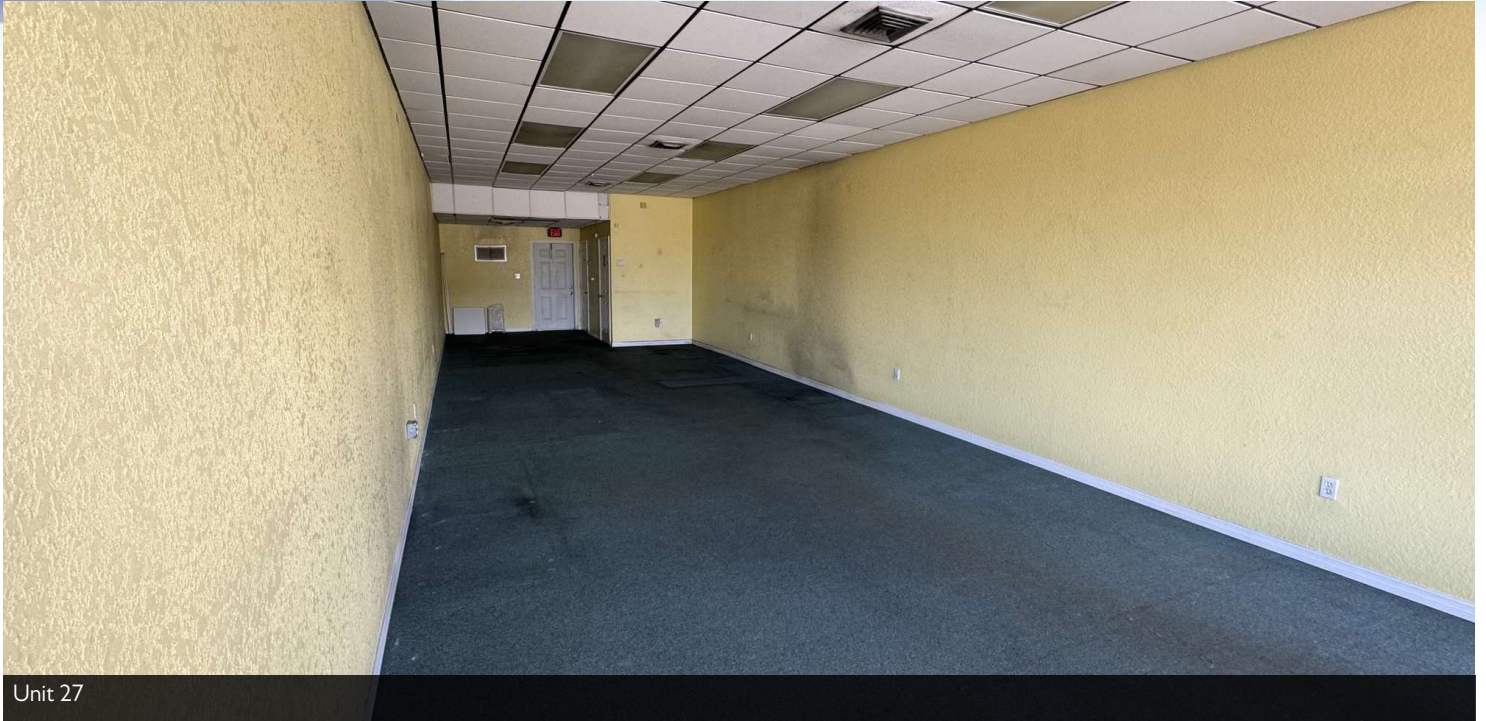
Lightle Beckner Robison, Inc.

321.722.0707 • teamlbr.com
70 W. Hibiscus Blvd.,
Melbourne, FL 32901

Information contained herein has been obtained through sources deemed reliable but cannot be guaranteed as to its accuracy. A purchaser or lessee is expected to verify all information to his/her own satisfaction. Zoning information subject to change and not warranted. Always confirm current requirements with local governing agencies.

INTERIOR PHOTOS

Village Shops of Merritt Island • 2137 N Courtenay Pkwy Merritt Island, FL 32953



Unit 27



Unit 31

JEFFERY T. ROBISON, CCIM

President | Broker
321.722.0707 X13
jeff@teamlbr.com

VITOR DE SOUSA, CCIM

Retail Sales & Leasing
321.722.0707 X15
vitor@teamlbr.com

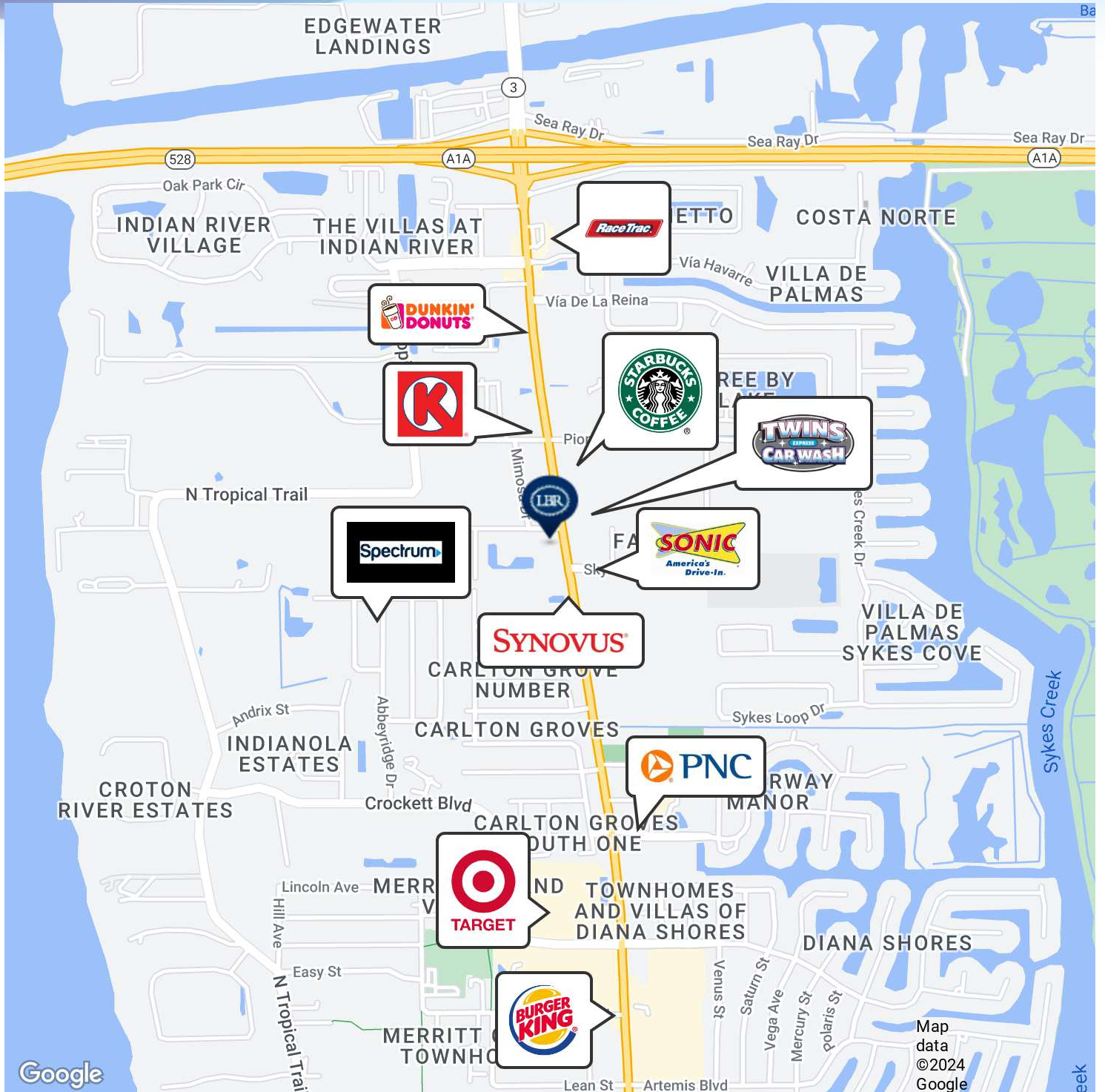
Lightle Beckner Robison, Inc.

321.722.0707 • teamlbr.com
70 W. Hibiscus Blvd.,
Melbourne, FL 32901

Information contained herein has been obtained through sources deemed reliable but cannot be guaranteed as to its accuracy. A purchaser or lessee is expected to verify all information to his/her own satisfaction. Zoning information subject to change and not warranted. Always confirm current requirements with local governing agencies.

RETAILER MAP

Village Shops of Merritt Island • 2137 N Courtenay Pkwy Merritt Island, FL 32953



JEFFERY T. ROBISON, CCIM

President | Broker
321.722.0707 X13
jeff@teamlbr.com

VITOR DE SOUSA, CCIM

Retail Sales & Leasing
321.722.0707 X15
vitor@teamlbr.com

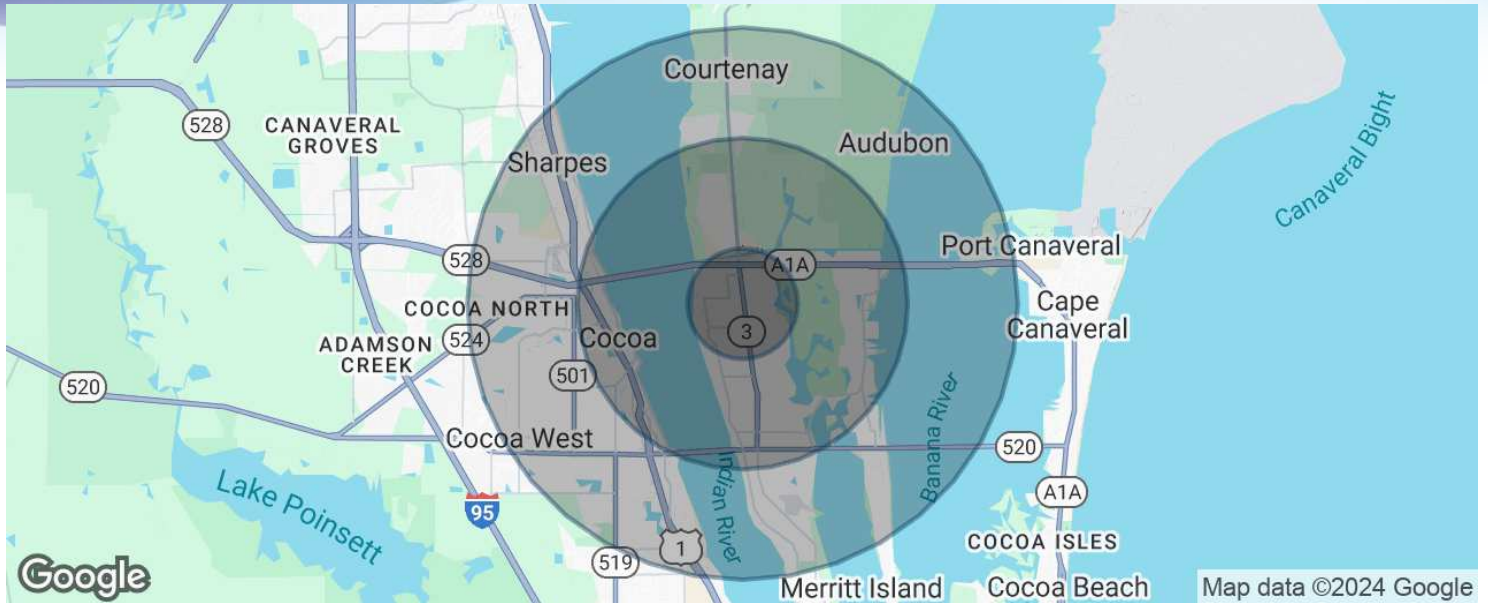
Lightle Beckner Robison, Inc.

321.722.0707 • teamlbr.com
70 W. Hibiscus Blvd.,
Melbourne, FL 32901

Information contained herein has been obtained through sources deemed reliable but cannot be guaranteed as to its accuracy. A purchaser or lessee is expected to verify all information to his/her own satisfaction. Zoning information subject to change and not warranted. Always confirm current requirements with local governing agencies.

DEMOGRAPHICS MAP & REPORT

Village Shops of Merritt Island • 2137 N Courtenay Pkwy Merritt Island, FL 32953



POPULATION

	1 MILE	3 MILES	5 MILES
Total population	4,577	25,092	60,629
Median age	48.2	45.5	43.4
Median age (Male)	47.1	44.4	42.3
Median age (Female)	49.8	45.7	44.3

HOUSEHOLDS & INCOME

	1 MILE	3 MILES	5 MILES
Total households	1,980	10,888	26,285
# of persons per HH	2.3	2.3	2.3
Average HH income	\$81,194	\$65,074	\$59,462
Average house value	\$321,473	\$268,037	\$245,769

* Demographic data derived from 2020 ACS - US Census

JEFFERY T. ROBISON, CCIM

President | Broker
321.722.0707 X13
jeff@teamlbr.com

VITOR DE SOUSA, CCIM

Retail Sales & Leasing
321.722.0707 X15
vitor@teamlbr.com

Lightle Beckner Robison, Inc.

321.722.0707 • teamlbr.com
70 W. Hibiscus Blvd.,
Melbourne, FL 32901

Information contained herein has been obtained through sources deemed reliable but cannot be guaranteed as to its accuracy. A purchaser or lessee is expected to verify all information to his/her own satisfaction. Zoning information subject to change and not warranted. Always confirm current requirements with local governing agencies.