

**FOR LEASE- 32,000 SF Warehouse with 3,500 SF Office**  
**311 Lawrence Road Suite G**  
**Milledgeville, GA 31061**  
**Located in Renaissance Park (Formerly Central State Hospital Campus)**

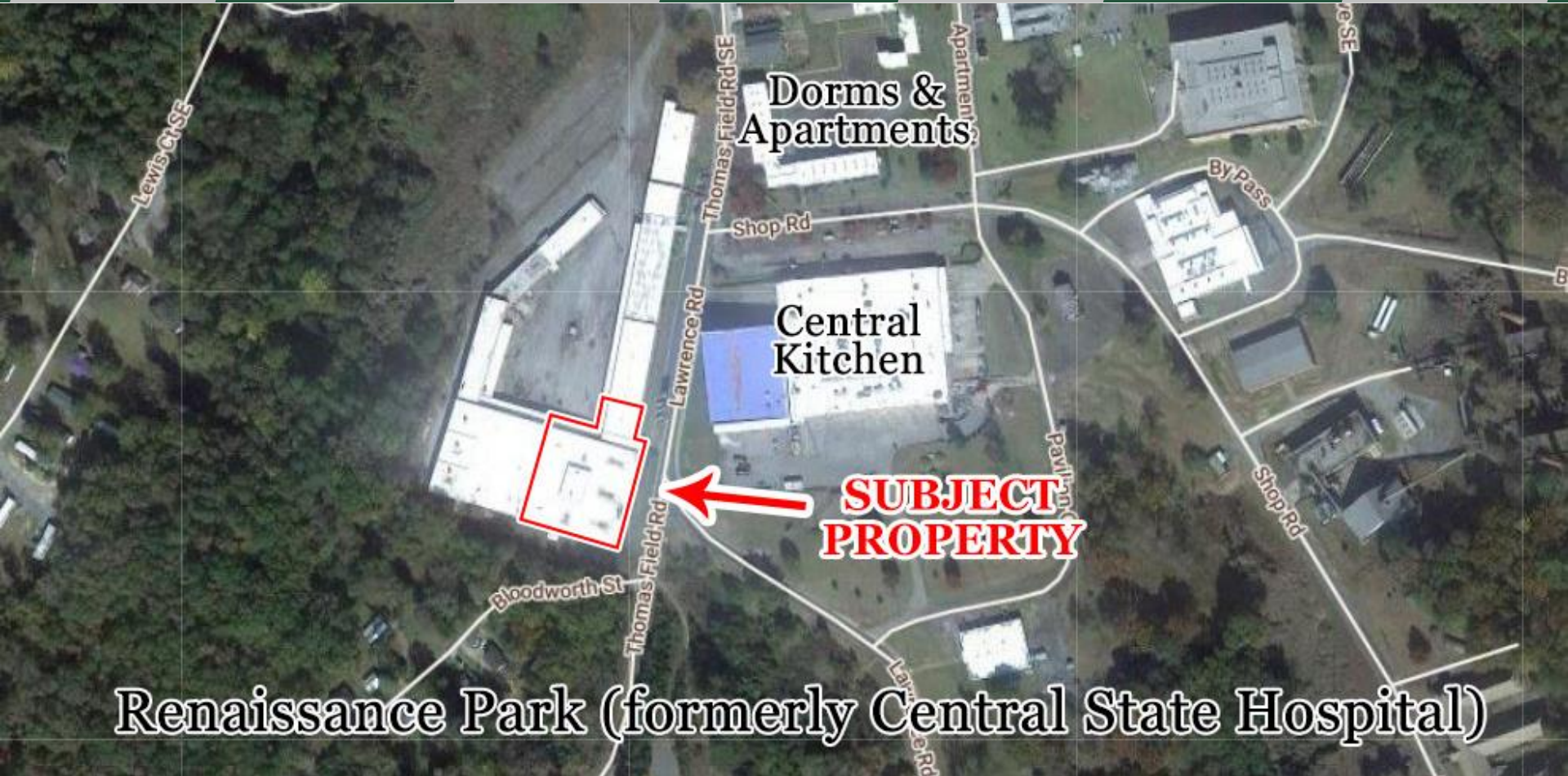


Summary

Area Info

Photos

Site Map



**Renaissance Park (formerly Central State Hospital)**

**CONTACT**

**Patty Burns, CCIM, ALC**  
478-746-9421 Office  
478-951-5100 Cell  
patty@fickling.com

**Trip Wilhoit, CCIM, ALC**  
478-746-9421 Office  
478-960-4080 Cell  
trip@fickling.com



577 Mulberry St, Suite 1100  
Macon, GA 31201  
478.746.9421 Office  
<https://commercial.fickling.com>

**FOR LEASE- 32,000 SF Warehouse with 3,500 SF Office**  
**311 Lawrence Road Suite G**  
**Milledgeville, GA 31061**  
**Located in Renaissance Park (Formerly Central State Hospital Campus)**



Summary

Area Info

Photos

Site Map

**PROPERTY INFORMATION**

**BUILDING**

**Property Address:** 311 Lawrence Road Suite G  
 Milledgeville, GA 31061

**County:** Baldwin

**Total Size:** 32,000 SF Warehouse  
 3,500 SF Office  
**35,500 SF Total**

**Available:** **35,500 SF**

**Utilities:** Water & Sewer Available

**Parking:** Shared & Ample

**SITE**

**Frontage:** ±260' ft on Lawrence Road

**Zoning:** Light Industrial

**LEASE RATE:**  
**CONTACT AGENT**

Demographics 2023	1 Mile	3 Miles	5 Miles
Population	2,555	16,245	26,253
Avg HH Income	\$36,986	\$49,912	\$67,936
Median Age	38.8	32.6	33.3

**CONTACT**

<p><b>Patty Burns, CCIM, ALC</b>                  478-746-9421 Office                  478-951-5100 Cell                  patty@fickling.com</p>	<p><b>Trip Wilhoit, CCIM, ALC</b>                  478-746-9421 Office                  478-960-4080 Cell                  trip@fickling.com</p>
--	--



577 Mulberry St, Suite 1100  
 Macon, GA 31201  
 478.746.9421 Office  
<https://commercial.fickling.com>

This information is from resources deemed to be reliable and is subject to change without notice. No warranties or guarantees for accuracy are made by Fickling and Company.

**FOR LEASE- 32,000 SF Warehouse with 3,500 SF Office**  
**311 Lawrence Road Suite G**  
**Milledgeville, GA 31061**  
**Located in Renaissance Park (Formerly Central State Hospital Campus)**



Summary

Area Info

Photos

Site Map

## PROPERTY INFORMATION

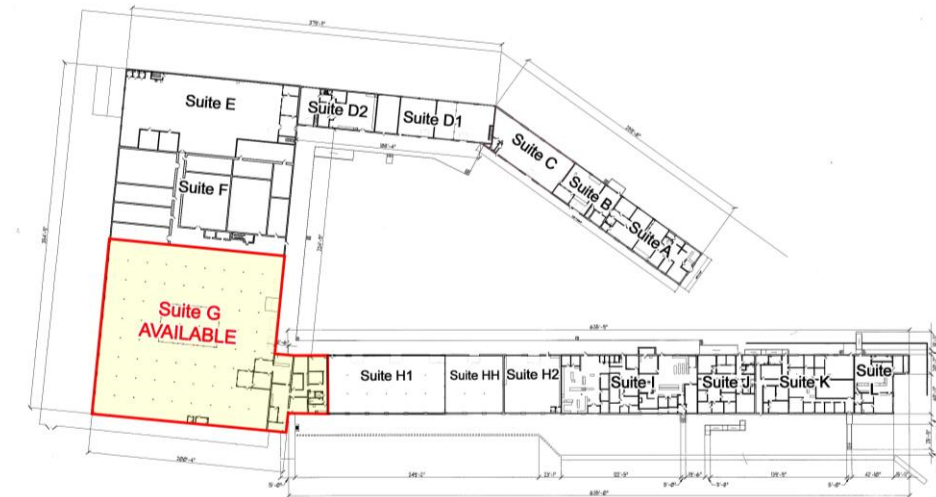
### NOTES

Property is a 32,000 SF warehouse with a 3,500 SF of office space with 4 restrooms. Dock high and drive in doors are in the warehouse. Suite is apart of an industrial park with a great tenant mix. Other tenants in the park include Ervin Cable, National On Demand, Decoy Ducks, and Tri County EMC.

### LOCATION

This warehouse is located in Milledgeville, GA in Renaissance Park formerly known as Central State Hospital Campus. Conveniently located 28 miles to I-75/I-16 and 34 miles to I-20.

### SUITE G SITE MAP



LAURENCE BUILDING OVERALL FIRST FLOOR PLAN  
SCALE: 1/8" = 1'-0" (VERTICAL SCALE NOT TO SCALE)

### CONTACT

**Patty Burns, CCIM, ALC**  
478-746-9421 Office  
478-951-5100 Cell  
patty@fickling.com

**Trip Wilhoit, CCIM, ALC**  
478-746-9421 Office  
478-960-4080 Cell  
trip@fickling.com



577 Mulberry St, Suite 1100  
Macon, GA 31201  
478.746.9421 Office  
<https://commercial.fickling.com>

**FOR LEASE- 32,000 SF Warehouse with 3,500 SF Office**  
**311 Lawrence Road Suite G**  
**Milledgeville, GA 31061**  
**Located in Renaissance Park (Formerly Central State Hospital Campus)**



Summary

Area Info

Photos

Site Map



**CONTACT**

**Patty Burns, CCIM, ALC**  
478-746-9421 Office  
478-951-5100 Cell  
patty@fickling.com

**Trip Wilhoit, CCIM, ALC**  
478-746-9421 Office  
478-960-4080 Cell  
trip@fickling.com



577 Mulberry St, Suite 1100  
Macon, GA 31201  
478.746.9421 Office  
<https://commercial.fickling.com>

**FOR LEASE- 32,000 SF Warehouse with 3,500 SF Office**  
**311 Lawrence Road Suite G**  
**Milledgeville, GA 31061**  
**Located in Renaissance Park (Formerly Central State Hospital Campus)**



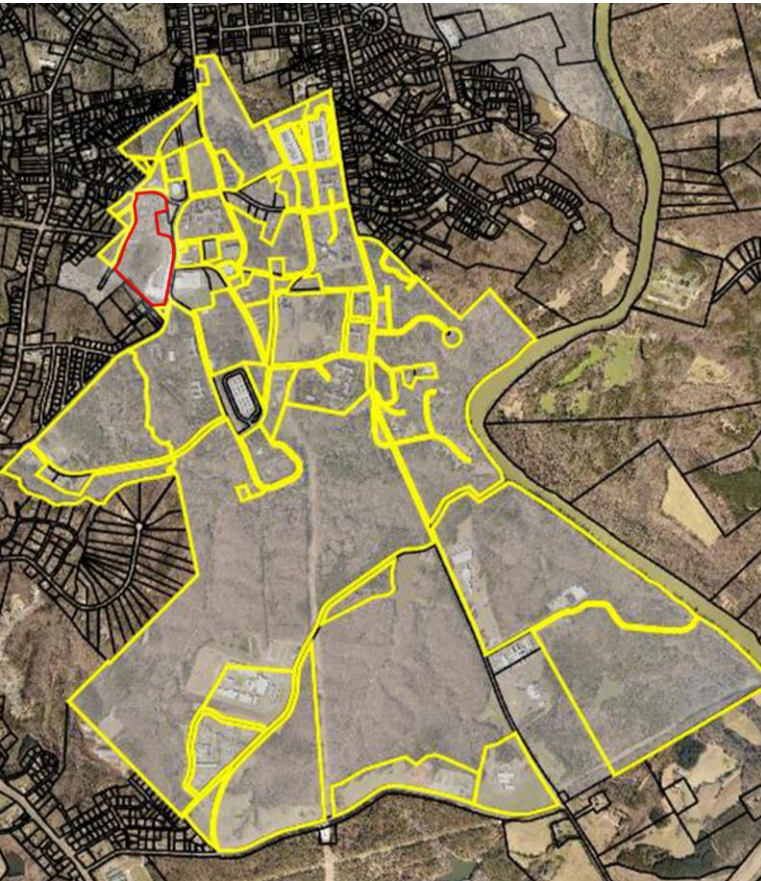
Summary

Area Info

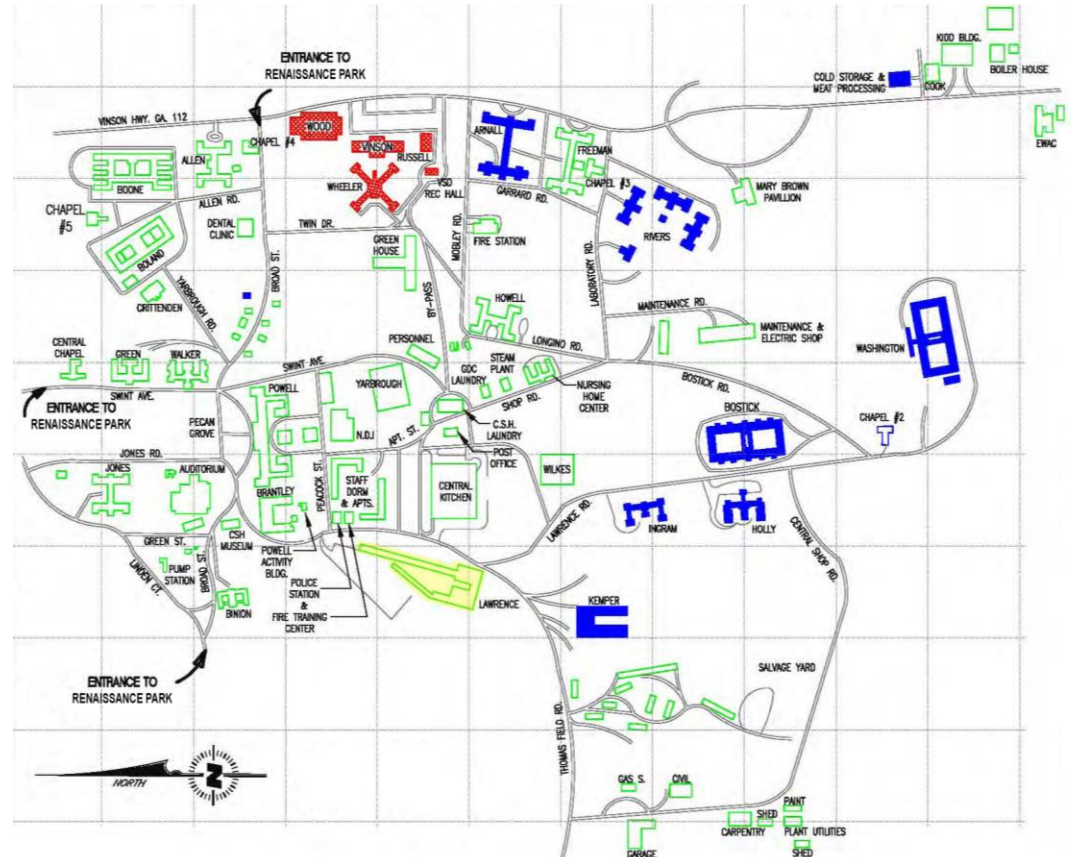
Photos

Site Map

## Renaissance Park Aerial



## Renaissance Park Site Map



### CONTACT

**Patty Burns, CCIM, ALC**  
 478-746-9421 Office  
 478-951-5100 Cell  
 patty@fickling.com

**Trip Wilhoit, CCIM, ALC**  
 478-746-9421 Office  
 478-960-4080 Cell  
 trip@fickling.com



577 Mulberry St, Suite 1100  
 Macon, GA 31201  
 478.746.9421 Office  
<https://commercial.fickling.com>