

WAREHOUSES FOR LEASE – 2,100 SF to 32,000 SF Available

311 Lawrence Road Milledgeville, GA 31061

Located in Renaissance Park (Formerly Central State Hospital Campus)



Summary

Area Info

Photos

Aerial

Site Map



LEASE RATE: CONTACT AGENT

CONTACT

Patty Burns, CCIM, ALC
478-746-9421 Office
478-951-5100 Cell
patty@fickling.com

Trip Wilhoit, CCIM, ALC
478-746-9421 Office
478-960-4080 Cell
trip@fickling.com



577 Mulberry St, Suite 1100
Macon, GA 31201
478.746.9421 Office
<https://commercial.fickling.com>

This information is from resources deemed to be reliable and is subject to change without notice. No warranties or guarantees for accuracy are made by Fickling and Company.



Summary | Area Info | Photos | Aerial | Site Map

PROPERTY INFORMATION

BUILDING

Property Address: 311 Lawrence Road
Milledgeville, GA 31061

County: Baldwin

Available: **2,100 SF to 32,000 SF**

Utilities: Water & Sewer Available

Parking: Shared & Ample

Loading Docks: Dock high & drive in located in different areas and spaces.

Tenants: Ervin Cable, National on Demand, Decoy Ducks, and Tri County EMC.

SITE

Frontage: ±260' ft on Lawrence Road


Zoning: Light Industrial

**LEASE RATE:
CONTACT AGENT**

Demographics 2023	1 Mile	3 Miles	5 Miles
Population	2,555	16,245	26,253
Avg HH Income	\$36,986	\$49,912	\$67,936
Median Age	38.8	32.6	33.3

CONTACT

<p>Patty Burns, CCIM, ALC 478-746-9421 Office 478-951-5100 Cell patty@fickling.com</p>	<p>Trip Wilhoit, CCIM, ALC 478-746-9421 Office 478-960-4080 Cell trip@fickling.com</p>
--	--

 577 Mulberry St, Suite 1100
 Macon, GA 31201
 478.746.9421 Office
<https://commercial.fickling.com>



PROPERTY INFORMATION

NOTES

See the list of available spaces and notes. Some spaces are for just warehousing. There are spaces with restrooms and offices. Warehouses are apart of an industrial park with a great tenant mix. Other tenants in the park include Ervin Cable, National On Demand, Decoy Ducks, and Tri County EMC.

LOCATION

Property is located in Milledgeville, GA in Renaissance Park formerly known as Central State Hospital Campus. Conveniently located 28 miles to I-75/I-16 and 34 miles to I-20.

CONTACT

Patty Burns, CCIM, ALC
 478-746-9421 Office
 478-951-5100 Cell
patty@fickling.com

Trip Wilhoit, CCIM, ALC
 478-746-9421 Office
 478-960-4080 Cell
trip@fickling.com



577 Mulberry St, Suite 1100
 Macon, GA 31201
 478.746.9421 Office
<https://commercial.fickling.com>

AVAILABLE SUITES

- Suite A:** 3,700 SF offices w/restroom - **LEASED**
- Suite B:** 2,100 SF warehouse - no restroom - **LEASED**
- Suite C:** 3,400 SF warehouse w/restroom - **LEASED**
- Suite D1:** **4,500 SF warehouse (3 sections - no restrooms)**
- Suite D2:** **2,200 SF office/warehouse w/2 restrooms**
- Suite E:** **18,000 SF warehouse w/3 restrooms**
- Suite F:** 15,840 SF warehouse - no restrooms – **NOT AVAILABLE**
- Suite G:** **32,000 SF warehouse & 3,500 SF of offices w/4 restrooms**
- Suite H1:** 7,000 SF warehouse – no restrooms – **LEASED: Decoy Ducks**
- Suite HH:** **3,000 SF warehouse—no restrooms**
- Suite H2:** 3,500 SF warehouse w/2 restrooms – **LEASED: National on Demand**
- Suite I:** **8,000 SF offices w/4 restrooms**
- Suite J:** **6,500 SF offices on 2 levels w/4 restrooms**
- Suite K:** **4,700 SF offices w/restroom**
- Suite L:** **2,200 SF offices w/restroom**

WAREHOUSES FOR LEASE – 2,100 SF to 32,000 SF Available
311 Lawrence Road Milledgeville, GA 31061
Located in Renaissance Park (Formerly Central State Hospital Campus)



Summary | Area Info | Photos | Aerial | Site Map



CONTACT

Patty Burns, CCIM, ALC
478-746-9421 Office
478-951-5100 Cell
patty@fickling.com

Trip Wilhoit, CCIM, ALC
478-746-9421 Office
478-960-4080 Cell
trip@fickling.com



577 Mulberry St, Suite 1100
Macon, GA 31201
478.746.9421 Office
<https://commercial.fickling.com>


This information is from resources deemed to be reliable and is subject to change without notice. No warranties or guarantees for accuracy are made by Fickling and Company.



CONTACT

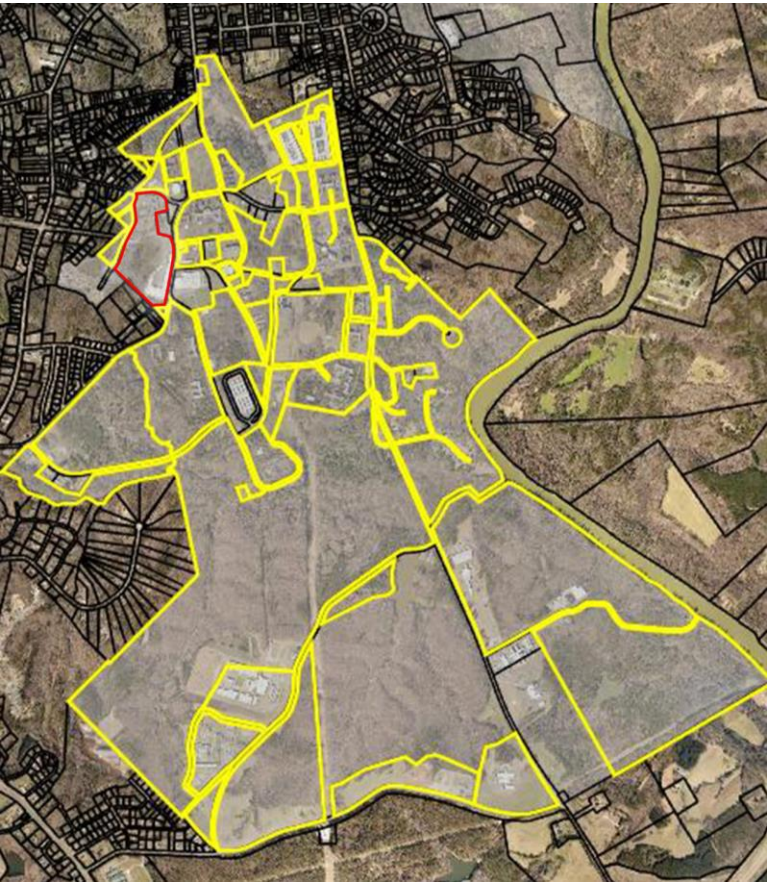
Patty Burns, CCIM, ALC
478-746-9421 Office
478-951-5100 Cell
patty@fickling.com

Trip Wilhoit, CCIM, ALC
478-746-9421 Office
478-960-4080 Cell
trip@fickling.com

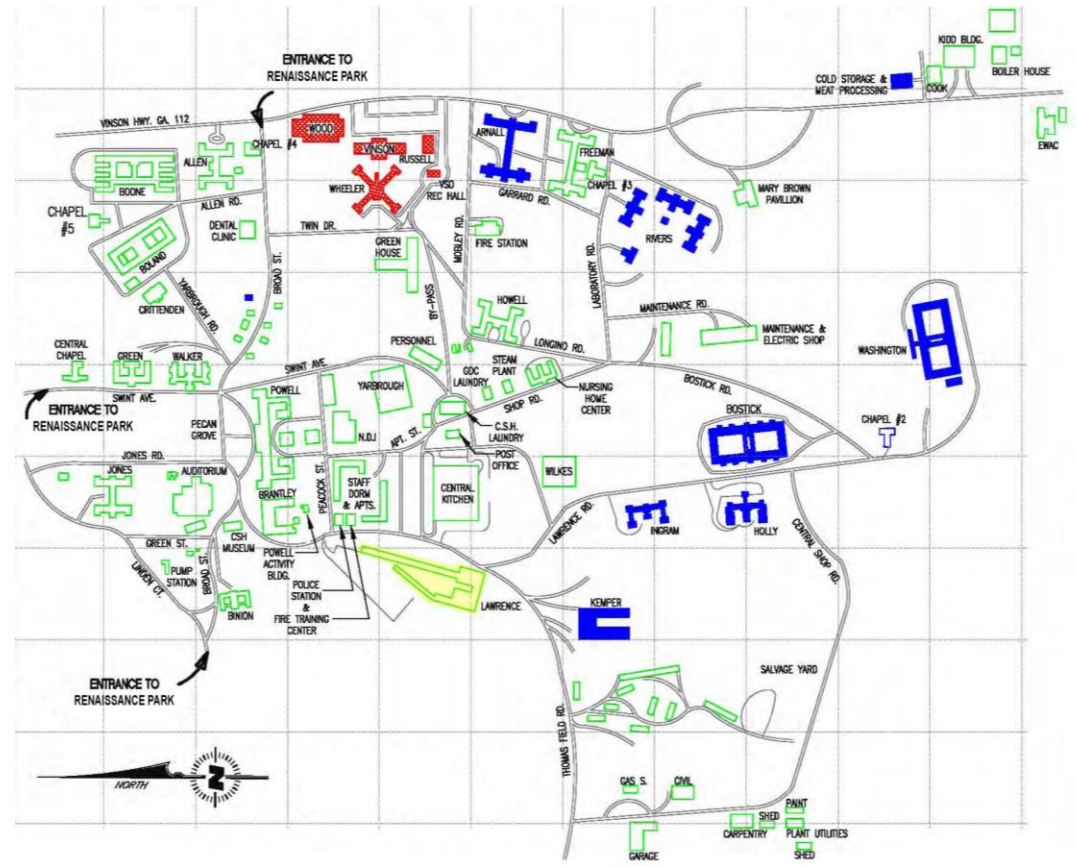


577 Mulberry St, Suite 1100
Macon, GA 31201
478.746.9421 Office
<https://commercial.fickling.com>

Renaissance Park Aerial



Renaissance Park Site Map



CONTACT

Patty Burns, CCIM, ALC
 478-746-9421 Office
 478-951-5100 Cell
 patty@fickling.com

Trip Wilhoit, CCIM, ALC
 478-746-9421 Office
 478-960-4080 Cell
 trip@fickling.com

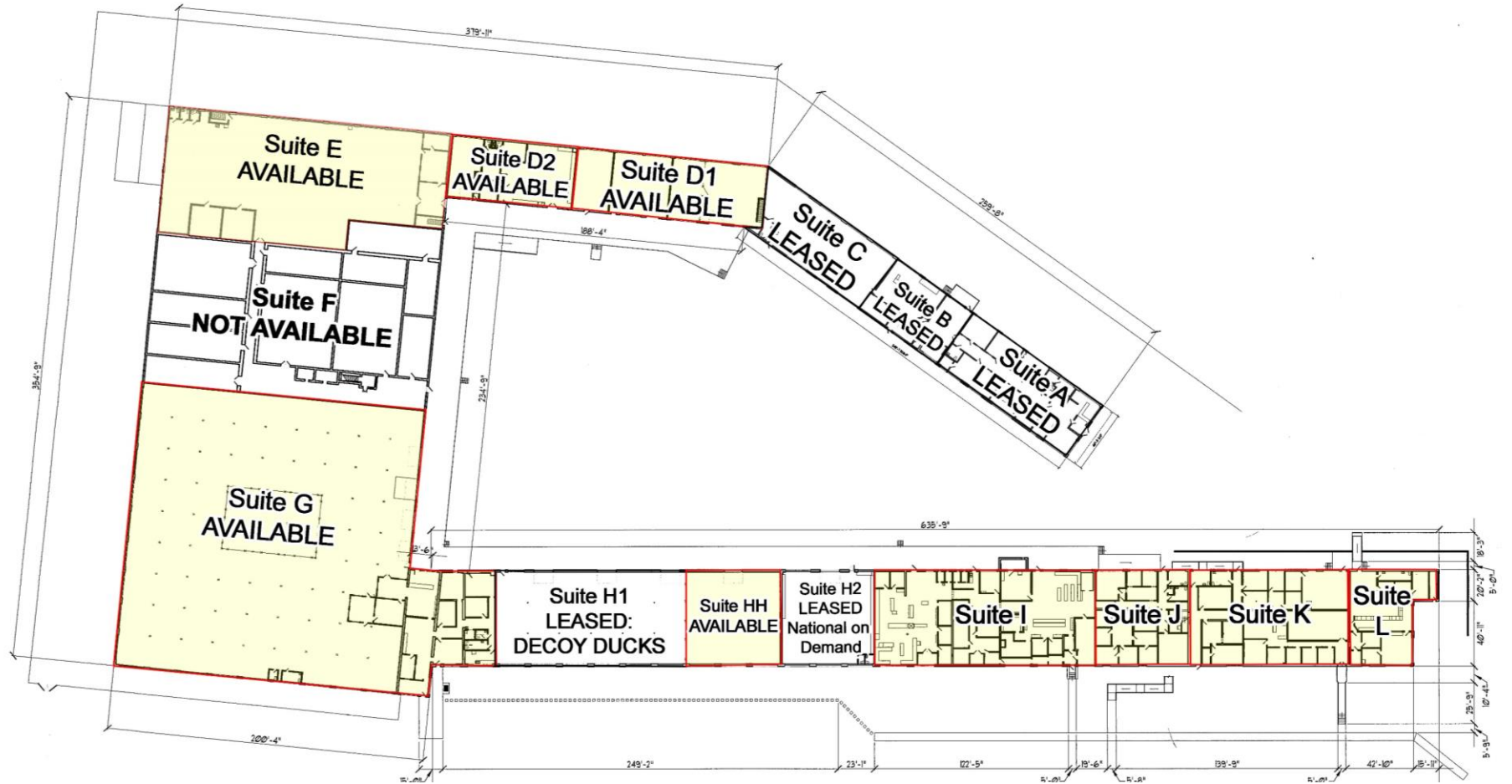


577 Mulberry St, Suite 1100
 Macon, GA 31201
 478.746.9421 Office
<https://commercial.fickling.com>

WAREHOUSES FOR LEASE – 2,100 SF to 32,000 SF Available
311 Lawrence Road Milledgeville, GA 31061
 Located in Renaissance Park (Formerly Central State Hospital Campus)



- Summary
- Area Info
- Photos
- Aerial
- Site Map



CONTACT

Patty Burns, CCIM, ALC
 478-746-9421 Office
 478-951-5100 Cell
 patty@fickling.com

Trip Wilhoit, CCIM, ALC
 478-746-9421 Office
 478-960-4080 Cell
 trip@fickling.com



577 Mulberry St, Suite 1100
 Macon, GA 31201
 478.746.9421 Office
<https://commercial.fickling.com>

This information is from resources deemed to be reliable and is subject to change without notice. No warranties or guarantees for accuracy are made by Fickling and Company.