

Highly Improved. Fantastic Amenities. Excellent Location.



MIZNER PLACE

Premier Destination for
Wellington Professionals

OFFICE | MEDICAL | RETAIL

Jason L. Sundook, SIOR
561 471 8000 | www.mhcreal.com

±1,911 SF

Class-A Office/Retail Space
in the heart of Wellington



MIZNER PLACE

12300 South Shore Boulevard, Wellington, Florida 33414

Property Features

- Highly improved and well-maintained building
- Building signage, improvement allowance and covered parking available
- Located in the Equestrian Capital of the World, with a mecca of equestrian programs, activities and events
- In the heart of Wellington, adjacent to Palm Beach Polo, and minutes from the Florida Turnpike, US-441, the Mall at Wellington Green, and more

For more information:

Jason L. Sundook, SIOR

Principal | jsundook@mhcreal.com

Key Features:



Office, medical and
retail space



Approved for
medical use



Multiple signage
opportunities



New On-site
Restaurant



Equestrian
community

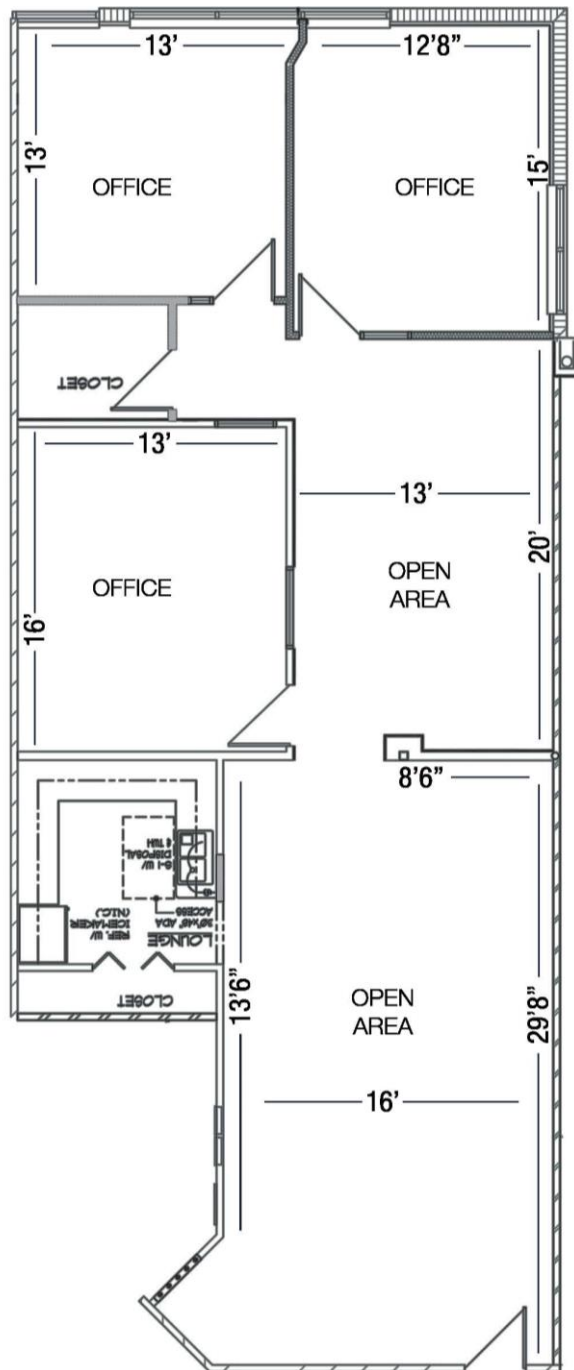


FOR LEASE: MIZNER PLACE

LOCATED IN THE HEART OF WELLINGTON

Suite 201 ±1,911 SF

- Second-floor office
- Mix of offices and open area space



*Not to scale. Subject to error.

LET'S SCHEDULE YOUR TOUR TODAY!

 **561 471 8000**