



ZEV COHEN & ASSOCIATES, INC.  
 CIVIL ENGINEERS • LANDSCAPE ARCHITECTS  
 PLANNERS • TRANSPORTATION • ENVIRONMENTAL  
 WWW.ZEVCOHEN.COM

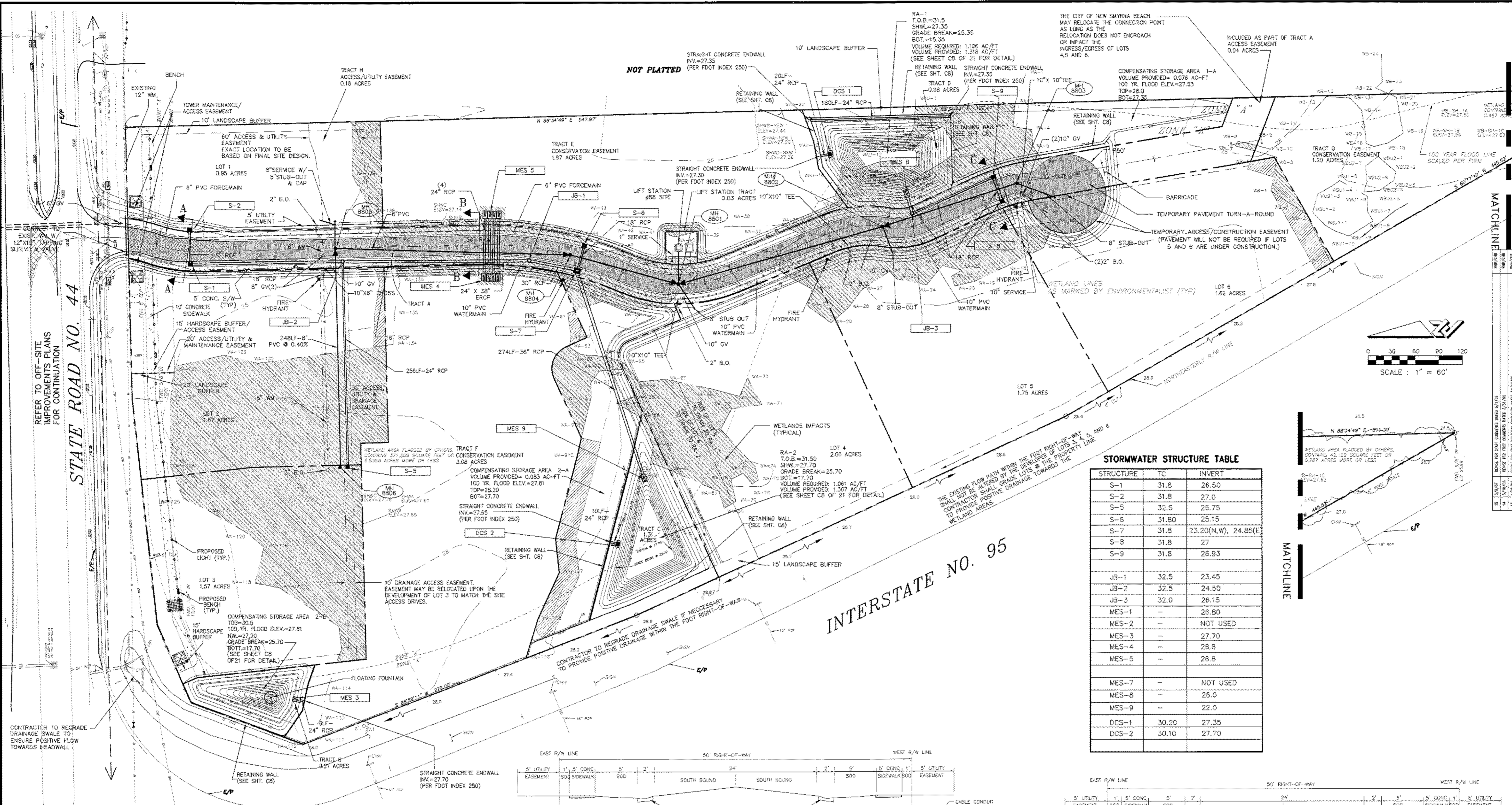
REVISIONS

NO.	DATE	DESCRIPTION
1	1/20/14	ISSUE FOR PERMIT
2	1/27/14	REVISED TO REFLECT COMMENTS FROM THE CITY OF NEW SMYRNA BEACH
3	2/10/14	REVISED TO REFLECT COMMENTS FROM THE CITY OF NEW SMYRNA BEACH
4	2/17/14	REVISED TO REFLECT COMMENTS FROM THE CITY OF NEW SMYRNA BEACH
5	2/24/14	REVISED TO REFLECT COMMENTS FROM THE CITY OF NEW SMYRNA BEACH
6	3/3/14	REVISED TO REFLECT COMMENTS FROM THE CITY OF NEW SMYRNA BEACH
7	3/10/14	REVISED TO REFLECT COMMENTS FROM THE CITY OF NEW SMYRNA BEACH
8	3/17/14	REVISED TO REFLECT COMMENTS FROM THE CITY OF NEW SMYRNA BEACH
9	3/24/14	REVISED TO REFLECT COMMENTS FROM THE CITY OF NEW SMYRNA BEACH
10	3/31/14	REVISED TO REFLECT COMMENTS FROM THE CITY OF NEW SMYRNA BEACH
11	4/7/14	REVISED TO REFLECT COMMENTS FROM THE CITY OF NEW SMYRNA BEACH
12	4/14/14	REVISED TO REFLECT COMMENTS FROM THE CITY OF NEW SMYRNA BEACH
13	4/21/14	REVISED TO REFLECT COMMENTS FROM THE CITY OF NEW SMYRNA BEACH
14	4/28/14	REVISED TO REFLECT COMMENTS FROM THE CITY OF NEW SMYRNA BEACH
15	5/5/14	REVISED TO REFLECT COMMENTS FROM THE CITY OF NEW SMYRNA BEACH

**NSB SOUTHEAST INTERCHANGE  
 PRELIMINARY PLAT  
 COMPOSITE DEVELOPMENT PLAN**

ZEV COHEN & ASSOCIATES, INC.  
 CIVIL ENGINEERS • LANDSCAPE ARCHITECTS  
 PLANNERS • TRANSPORTATION • ENVIRONMENTAL  
 WWW.ZEVCOHEN.COM

PROJECT NO. 0836  
 ISSUE DATE: 4-29-14  
 DESIGNED BY: RVH  
 CHECKED BY: MJD  
 DRAWING FILE: 0836DCP  
 SHEET NO: 38-3

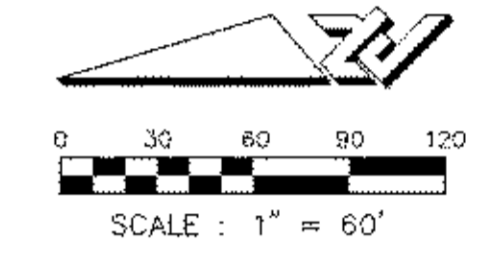
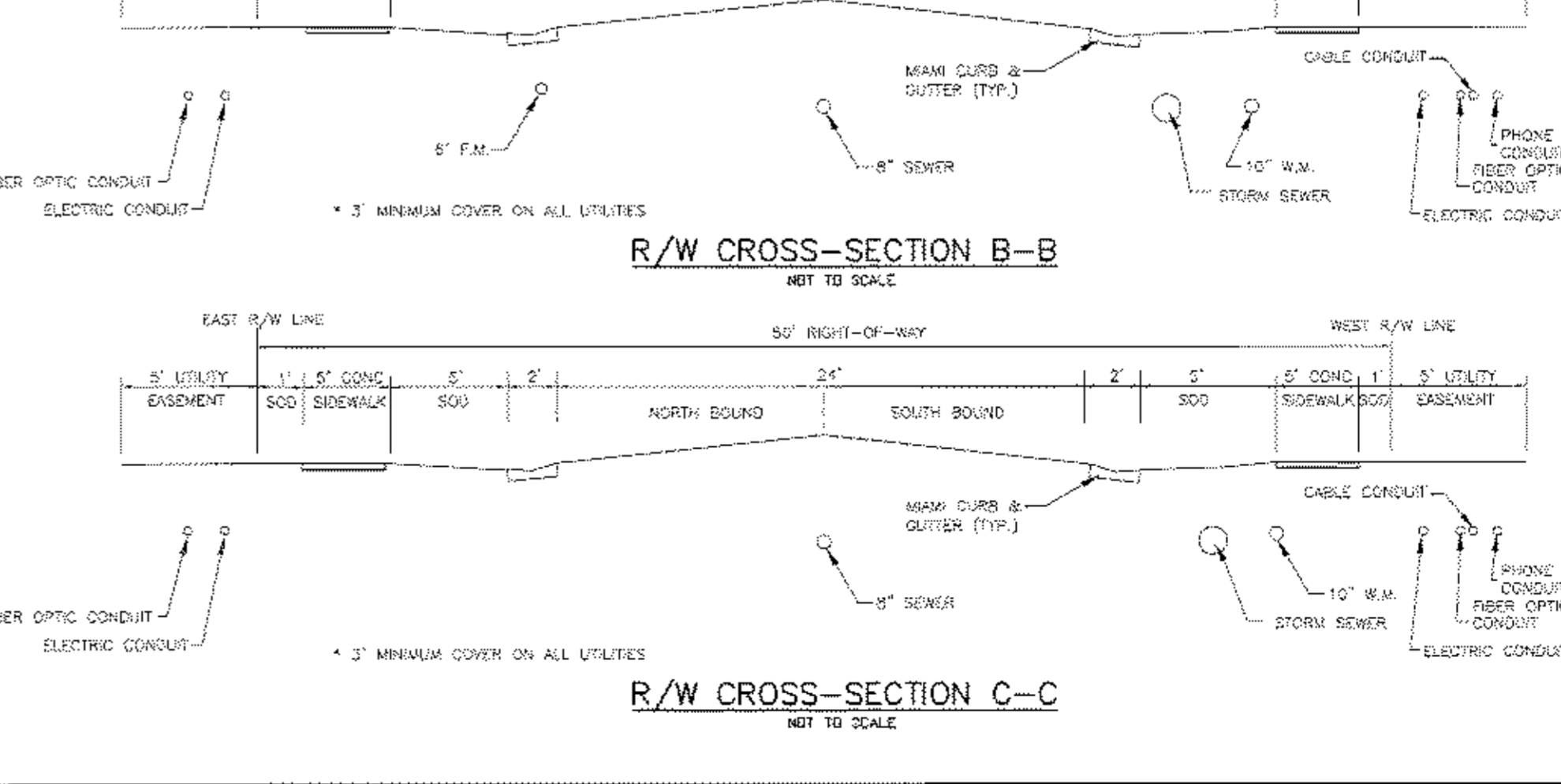
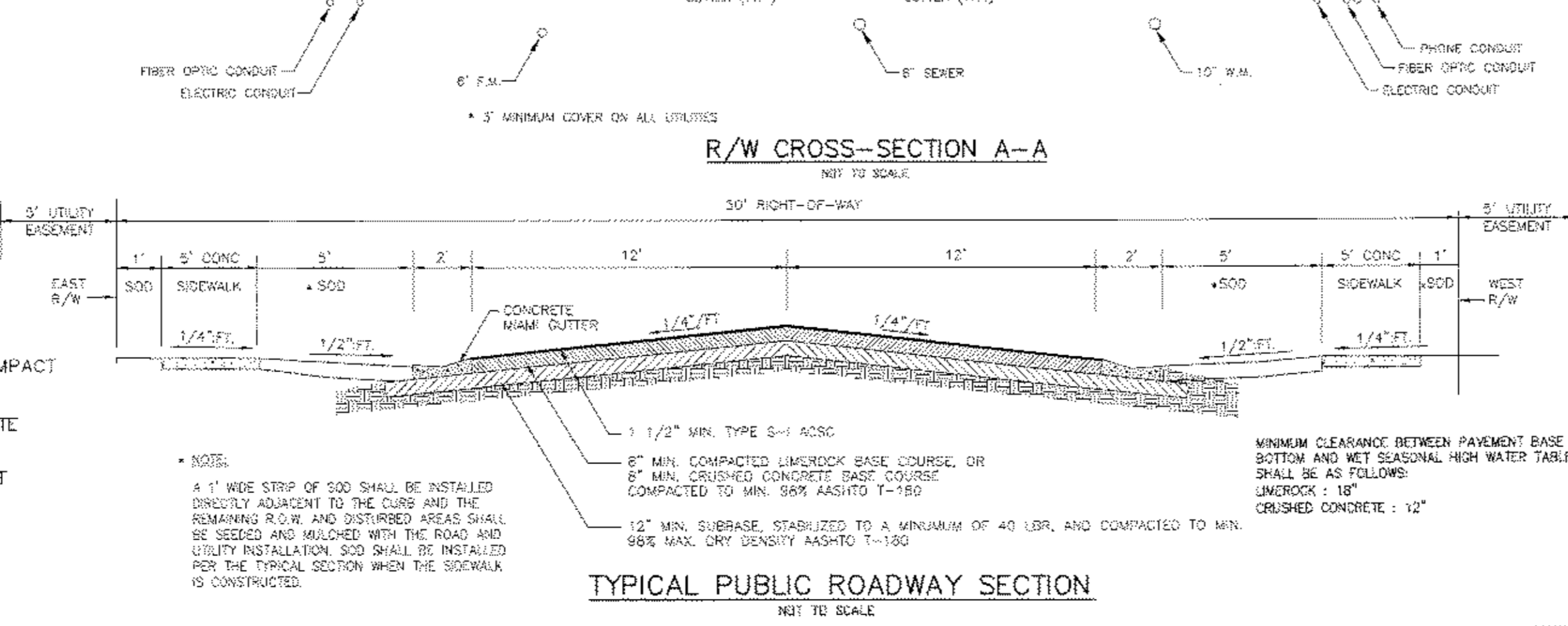


**STORMWATER STRUCTURE TABLE**

STRUCTURE	TC	INVERT
S-1	31.8	26.50
S-2	31.8	27.0
S-5	32.5	25.75
S-6	31.80	25.15
S-7	31.8	23.20(N,W), 24.85(E)
S-8	31.8	27
S-9	31.8	26.93
JB-1	32.5	23.45
JB-2	32.5	24.50
JB-3	32.0	26.15
MES-1	-	26.80
MES-2	-	NOT USED
MES-3	-	27.70
MES-4	-	26.8
MES-5	-	26.8
MES-7	-	NOT USED
MES-8	-	26.0
MES-9	-	22.0
DCS-1	30.20	27.35
DCS-2	30.10	27.70

**LEGEND:**

- 28.00: EXISTING GRADE ELEVATION
- 28.50: PROPOSED GRADE ELEVATION
- Symbol: PROPOSED STORM DRAIN W/INLET
- Symbol: PROPOSED MITERED END SECTION
- Symbol: PROPOSED JUNCTION BOX W/STORM DRAIN
- Symbol: PROPOSED WATERMAIN
- Symbol: PROPOSED FORCE MAIN
- Symbol: PROPOSED FIRE HYDRANT ASSEMBLY
- Symbol: PROPOSED SAN. SEWER W/PIPING
- Symbol: PROPOSED GATE VALVE
- Symbol: PROPOSED SLOW-OFF
- Symbol: STREET LIGHT LOCATION (TYPICAL)
- Symbol: EXISTING CONTOUR
- Symbol: PROPOSED CONTOUR
- Symbol: WETLANDS LIMITS
- Symbol: PROPOSED STORMWATER STRUCTURE NUMBER
- Symbol: PROPOSED MANHOLE NUMBER
- Symbol: WETLAND IMPACT
- Symbol: WETLAND BUFFER IMPACT
- Symbol: PROPOSED CONCRETE
- Symbol: PROPOSED ASPHALT



REFER TO OFF-SITE IMPROVEMENTS PLANS FOR CONTINUATION

STATE ROAD NO. 44

INTERSTATE NO. 95

MATCHLINE

MATCHLINE