

Up to 2,240 SF Retail Space Available

247  
Indoor Golf

GOLF



## Mayfair Plaza

969 SE Federal Hwy, Stuart, Florida 34994

\$15.00/SF NNN  
\$17.00/SF NNN

### Property Features

Building Size:	±49,954 SF
Available Space:	2,240 SF - \$15.00/SF NNN, 1,600 SF - \$17.00/SF NNN
Zoning:	B-2, Business General (City of Stuart)
Parking:	4/1,000 Parking (200 spaces on site)
Traffic Count:	AADT 37,000

### Property Overview

This property sits in the middle of the prime retail corridor in Stuart, FL, surrounded by National retailers such as Wawa, TD Bank, Seacoast Bank, McDonalds, Burger King, Bank of America, Publix, USPS, Conviva, Frazier Creek Brewery.

For more information:

**Stuart Duffin, P.A., CCIM, SIOR**

Partner | Broker Associate

+1 772 579 0370 • [sduffin@naisouthcoast.com](mailto:sduffin@naisouthcoast.com)

**JJ Sanguily**

Sales Associate

+1 772 834 3519 • [jj@naisouthcoast.com](mailto:jj@naisouthcoast.com)

NO WARRANTY OR REPRESENTATION, EXPRESS OR IMPLIED, IS MADE AS TO THE ACCURACY OF THE INFORMATION CONTAINED HEREIN, AND THE SAME IS SUBMITTED SUBJECT TO ERRORS, OMISSIONS, CHANGE OF PRICE, RENTAL OR OTHER CONDITIONS, PRIOR SALE, LEASE OR FINANCING, OR WITHDRAWAL WITHOUT NOTICE, AND OF ANY SPECIAL LISTING CONDITIONS IMPOSED BY OUR PRINCIPALS NO WARRANTIES OR REPRESENTATIONS ARE MADE AS TO THE CONDITION OF THE PROPERTY OR ANY HAZARDS CONTAINED THEREIN ARE ANY TO BE IMPLIED.

100 SW Albany Avenue, 2nd Floor  
Stuart, Florida 34994  
+1 772 286 6292

[www.naisouthcoast.com](http://www.naisouthcoast.com)

Photo

Unit 965  
1,600 SF

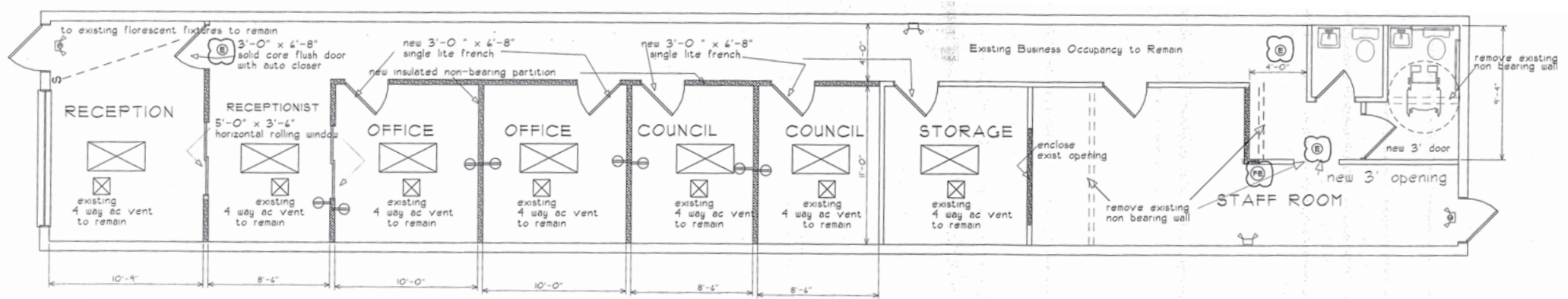


**NAI**Southcoast

100 SW Albany Avenue, 2nd Floor  
Stuart, Florida 34994  
+1 772 286 6292  
[www.naisouthcoast.com](http://www.naisouthcoast.com)

# Site Plan

Unit 965  
1,600 SF



Photo

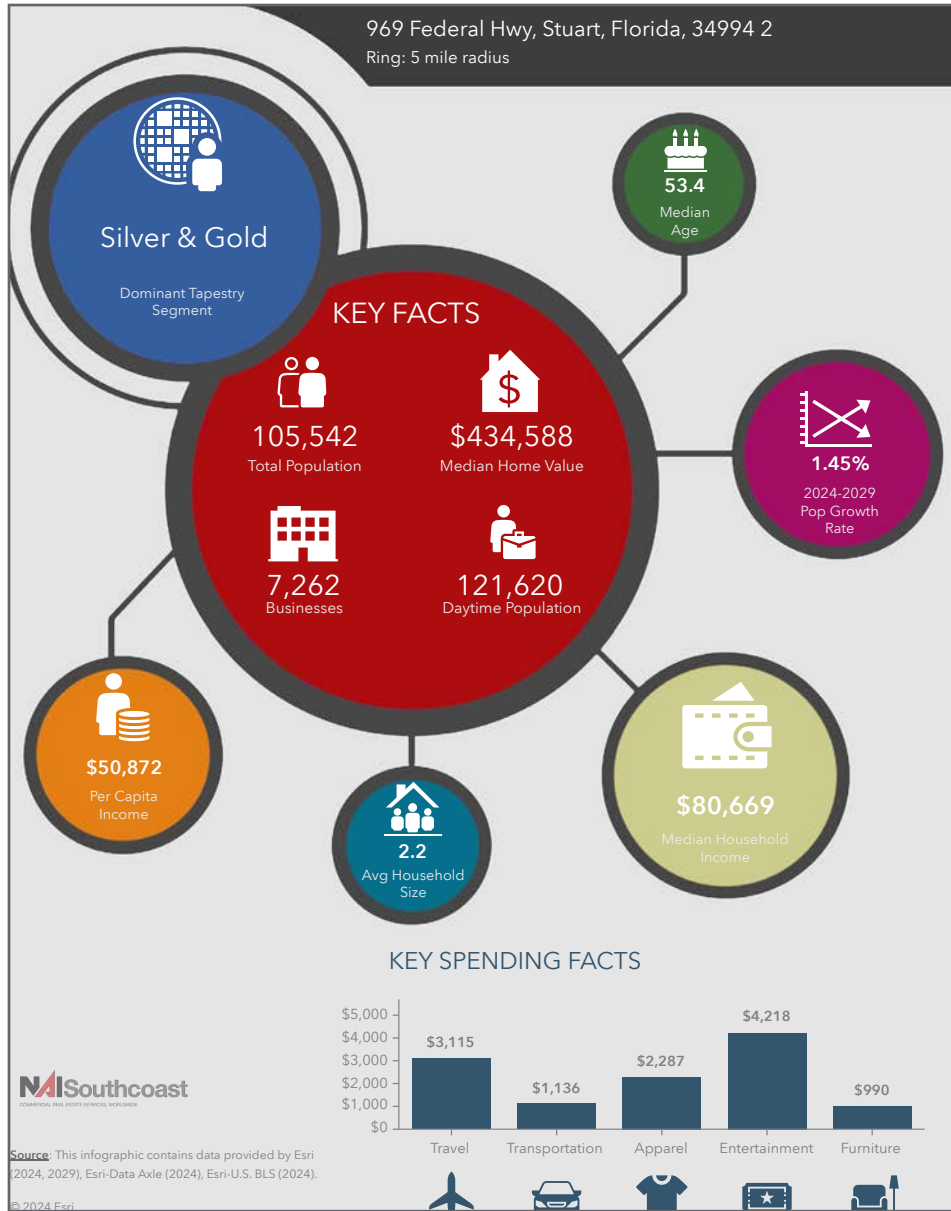
Unit 957  
2,240 SF



**NAI**Southcoast

100 SW Albany Avenue, 2nd Floor  
Stuart, Florida 34994  
+1 772 286 6292  
[www.naisouthcoast.com](http://www.naisouthcoast.com)

# 2024 Demographics



## Population

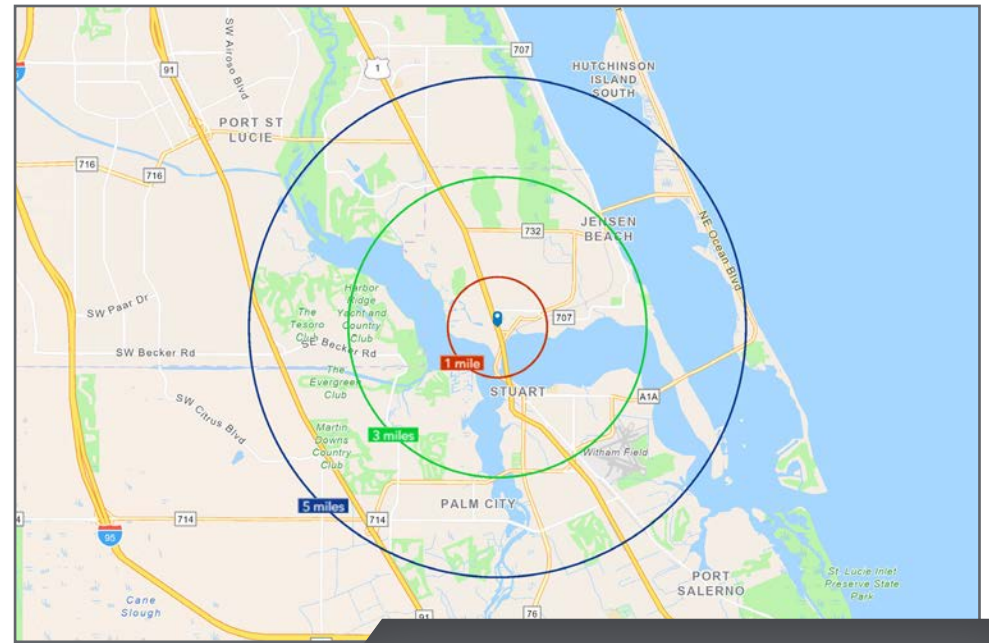
- 1 Mile: 6,131
- 3 Mile: 42,410
- 5 Mile: 105,542

## Average Household Income

- 1 Mile: \$135,491
- 3 Mile: \$117,226
- 5 Mile: \$114,775

## Median Age

- 1 Mile: 50.7
- 3 Mile: 55.6
- 5 Mile: 53.4



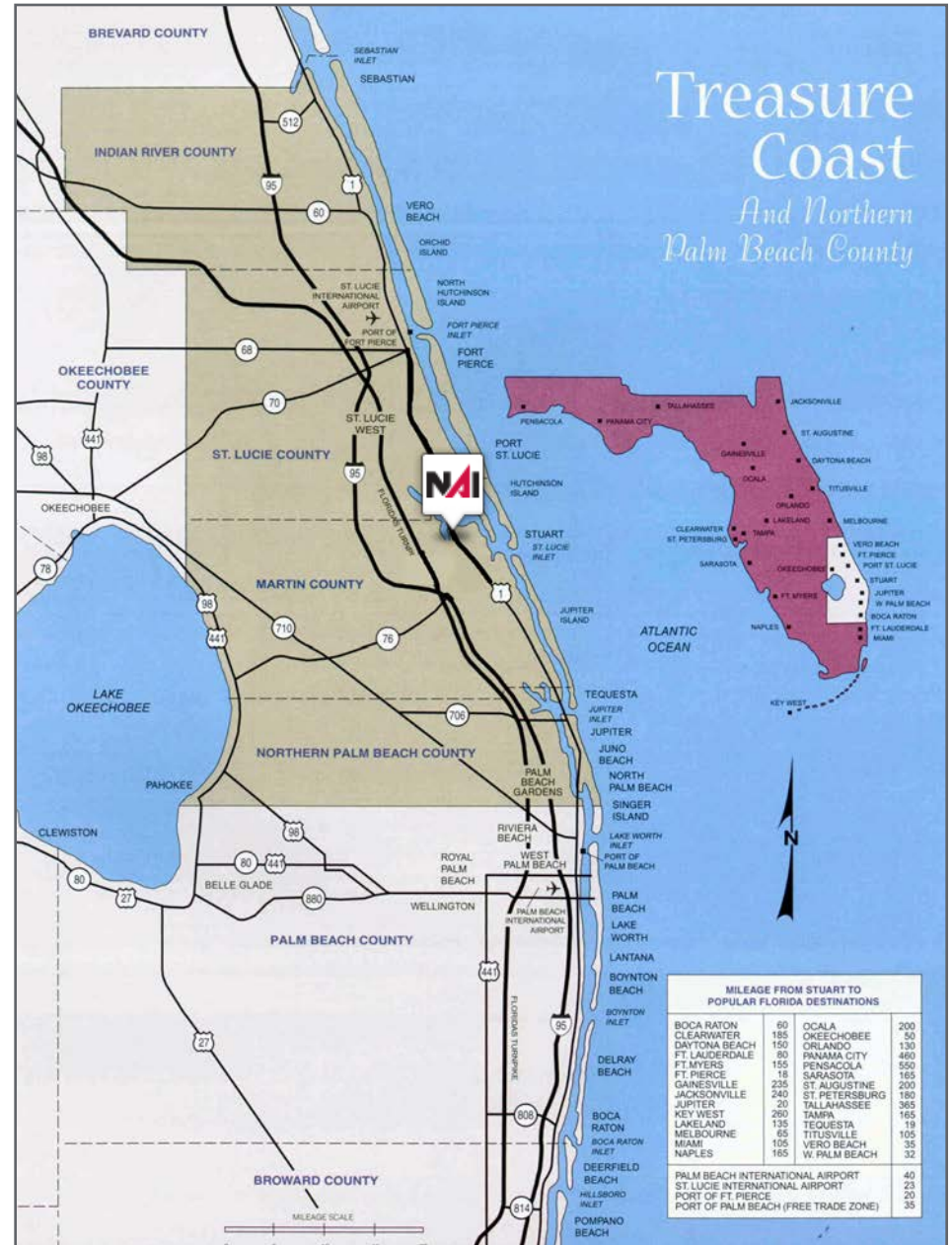
100 SW Albany Avenue, 2nd Floor  
Stuart, Florida 34994  
+1 772 286 6292  
[www.naisouthcoast.com](http://www.naisouthcoast.com)

# Area Maps

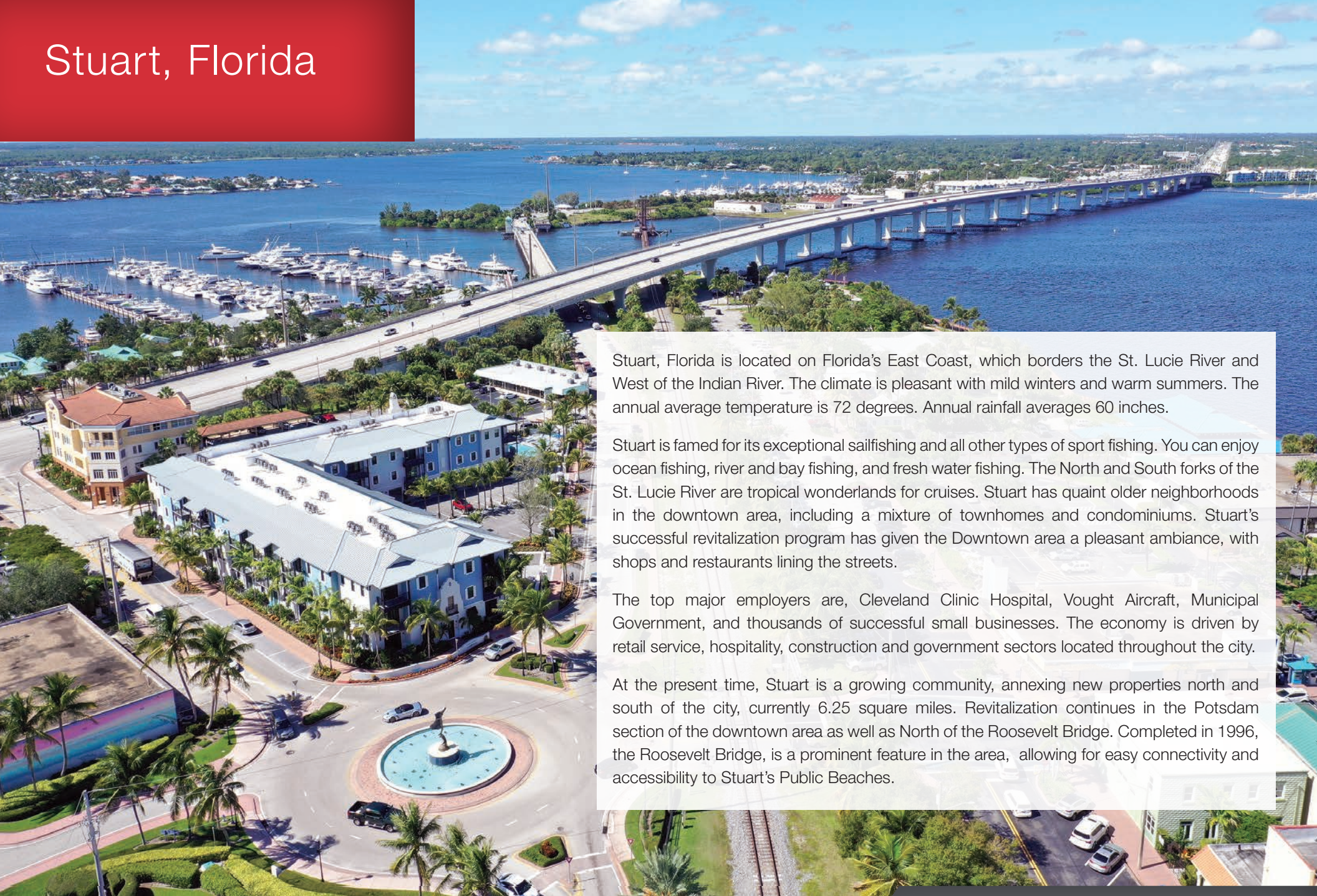
## Martin County



## Treasure Coast And Northern Palm Beach County



# Stuart, Florida



Stuart, Florida is located on Florida's East Coast, which borders the St. Lucie River and West of the Indian River. The climate is pleasant with mild winters and warm summers. The annual average temperature is 72 degrees. Annual rainfall averages 60 inches.

Stuart is famed for its exceptional sailfishing and all other types of sport fishing. You can enjoy ocean fishing, river and bay fishing, and fresh water fishing. The North and South forks of the St. Lucie River are tropical wonderlands for cruises. Stuart has quaint older neighborhoods in the downtown area, including a mixture of townhomes and condominiums. Stuart's successful revitalization program has given the Downtown area a pleasant ambiance, with shops and restaurants lining the streets.

The top major employers are, Cleveland Clinic Hospital, Vought Aircraft, Municipal Government, and thousands of successful small businesses. The economy is driven by retail service, hospitality, construction and government sectors located throughout the city.

At the present time, Stuart is a growing community, annexing new properties north and south of the city, currently 6.25 square miles. Revitalization continues in the Potsdam section of the downtown area as well as North of the Roosevelt Bridge. Completed in 1996, the Roosevelt Bridge, is a prominent feature in the area, allowing for easy connectivity and accessibility to Stuart's Public Beaches.

# Martin County, Florida

The cities that make up Martin County include Jensen Beach/Rio, Stuart/Sewall's Point, Hutchinson Island, Hobe Sound, Jupiter/ Tequesta, Palm City, Port Salerno and Indiantown. Martin County is a wonderful place to visit and live, with beaches, golf, fishing and boating. The County boasts arts, quaint downtowns with shops, gourmet dining, galleries, museums, historic places, festivals and more.

## *Martin County is for...*

The golf enthusiast... Martin County is home to over 35 world-class golf courses all within a 15-mile radius. The sun worshiper... The County offers its visitors and residents alike some of the finest beaches on the east coast. The discriminating arts shopper... More than 20 galleries participate in a monthly First Thursday gallery night. Many of these galleries are in the historic downtowns of Stuart, Jensen Beach, Port Salerno and Hobe Sound. The music lover... The historic Lyric Theatre offers a wide-array of fist class talent nearly 300 days a year... This acoustically amazing theatre features concerts for all music lovers, from classical to rock and roll, and theatrical performances by local and national talent.



Mark your calendars for a plethora of events to look forward to in Martin County, Florida. The Stuart Air Show, Stuart Boat Show, ArtsFest, and the Martin County Fair are just some of the many events taking place throughout the year. The Treasure Coast Children's Museum, located at Indian Riverside Park, is a great place for kids and families, offering a water play area, fishing, and a riverfront view. Often, there are events in the park including concerts, orchid shows, and more. Indian Riverside Park also features the Maritime and Yachting Museum. Hutchinson Island is home to the Elliott Museum which celebrates the genius of innovation, creativity and the historical events of Martin County. Named after the prolific inventor Sterling Elliott, the museum hosts permanent exhibits showcasing Model A Trucks, early transportation, the history of Stuart and its surrounding regions, and baseball memorabilia. For the scientifically minded and curious kids, the Florida Oceanographic Coastal Center offers fun opportunities to learn about our local ecosystem.





# FOR LEASE



Mayfair Plaza | 975 SE Federal Hwy, Stuart, Florida 34994

## Up to 2,240 SF Retail Space Available

### Highlights

- Excellent 2.86 Acre location on US-1 and SE Johnson Avenue.
- Lighted intersection and also a direct left turn in from southbound lane of US-1.
- 37,000 traffic count.
- 200 parking spaces in center plus street parking on SE Johnson Avenue.
- Located on US-1 between Colorado Avenue and Johnson Avenue and SE Hudson Court.
- Newly renovated.



**Stuart Duffin, P. A.,  
CCIM, SIOR**

Partner | Broker Associate  
+1 772 579 0370  
sduffin@naisouthcoast.com



**JJ Sanguily**

Sales Associate  
+1 772 834 3519  
jj@naisouthcoast.com



100 SW Albany Avenue, 2nd Floor  
Stuart, Florida 34994  
+1 772 286 6292  
www.naisouthcoast.com