

FREESTANDING RETAIL

• 4320 - 4420 S Babcock St Melbourne, FL 32901



OFFERING SUMMARY

Available SF: +/-3,200 +/- 1300 SF

Lease Rate: \$14.00 SF/yr (NNN)

Year Built: 2008

Building Size: 8,040 SF

Zoning: C2

PROPERTY OVERVIEW

Marquee Signage on Well Traveled Babcock Street plus Building Signage

Suite 102, +/- 1300 SF Current Build is Office Space, Three Offices, Reception/ Waiting Area and Break Room. Server Rack

Suite 103- 104 +/- 3200 SF Spacious Flexible Open Design with Area for Refreshments Vinyl Plank Flooring, Two Restrooms, High Ceilings with Chic Industrial Look of Exposed Black Ductwork

LOCATION OVERVIEW

Great Melbourne Location on Babcock Street just North of Palm Bay Road Ample Parking

Property is Surrounded by Residential Neighborhoods and Commercial Development

BRIAN L. LIGHTLE, CCIM, SIOR, CRE

Founder | Broker Associate
321.863.3228
brian@teamlbr.com

Lightle Beckner Robison, Inc.

321.722.0707 • teamlbr.com
70 W. Hibiscus Blvd.,
Melbourne, FL 32901

Information contained herein has been obtained through sources deemed reliable but cannot be guaranteed as to its accuracy. A purchaser or lessee is expected to verify all information to his/her own satisfaction. Zoning information subject to change and not warranted. Always confirm current requirements with local governing agencies.

AVAILABLE SPACES

• 4320 - 4420 S Babcock St Melbourne, FL 32901

Lease Rate: \$14.00 SF/YR (NNN) **Total Space** 1,300 - 4,500 SF
Lease Type: NNN **Lease Term:** Three Years

| SPACE | SPACE USE | LEASE RATE | LEASE TYPE | SIZE (SF) | TERM | COMMENTS |
|--|-----------|---------------|------------|------------------|------------|-------------------------|
| Large Open Retail | | \$14.00 SF/YR | NNN | 3,200 - 4,500 SF | Negotiable | Contiguous with 102 |
| Current Built Out Office or Return to Retail | | \$14.00 SF/YR | NNN | 1,300 - 4,500 SF | Negotiable | Contiguous with 103-104 |

BRIAN L. LIGHTLE, CCIM, SIOR, CRE

Founder | Broker Associate
321.863.3228
brian@teamlbr.com

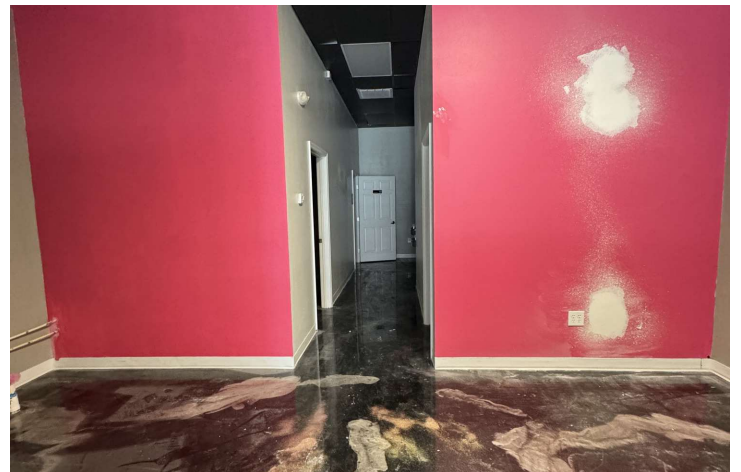
Lightle Beckner Robison, Inc.

321.722.0707 • teamlbr.com
70 W. Hibiscus Blvd.,
Melbourne, FL 32901

Information contained herein has been obtained through sources deemed reliable but cannot be guaranteed as to its accuracy. A purchaser or lessee is expected to verify all information to his/her own satisfaction. Zoning information subject to change and not warranted. Always confirm current requirements with local governing agencies.

SUITE 103/104 SPACIOUS OPEN FLOOR PLAN

• 4320 - 4420 S Babcock St Melbourne, FL 32901



BRIAN L. LIGHTLE, CCIM, SIOR, CRE

Founder | Broker Associate
321.863.3228
brian@teamlbr.com

Lightle Beckner Robison, Inc.

321.722.0707 • teamlbr.com
70 W. Hibiscus Blvd.,
Melbourne, FL 32901

Information contained herein has been obtained through sources deemed reliable but cannot be guaranteed as to its accuracy. A purchaser or lessee is expected to verify all information to his/her own satisfaction. Zoning information subject to change and not warranted. Always confirm current requirements with local governing agencies.

SUITE 102

• 4320 - 4420 S Babcock St Melbourne, FL 32901



BRIAN L. LIGHTLE, CCIM, SIOR, CRE

Founder | Broker Associate
321.863.3228
brian@teamlbr.com

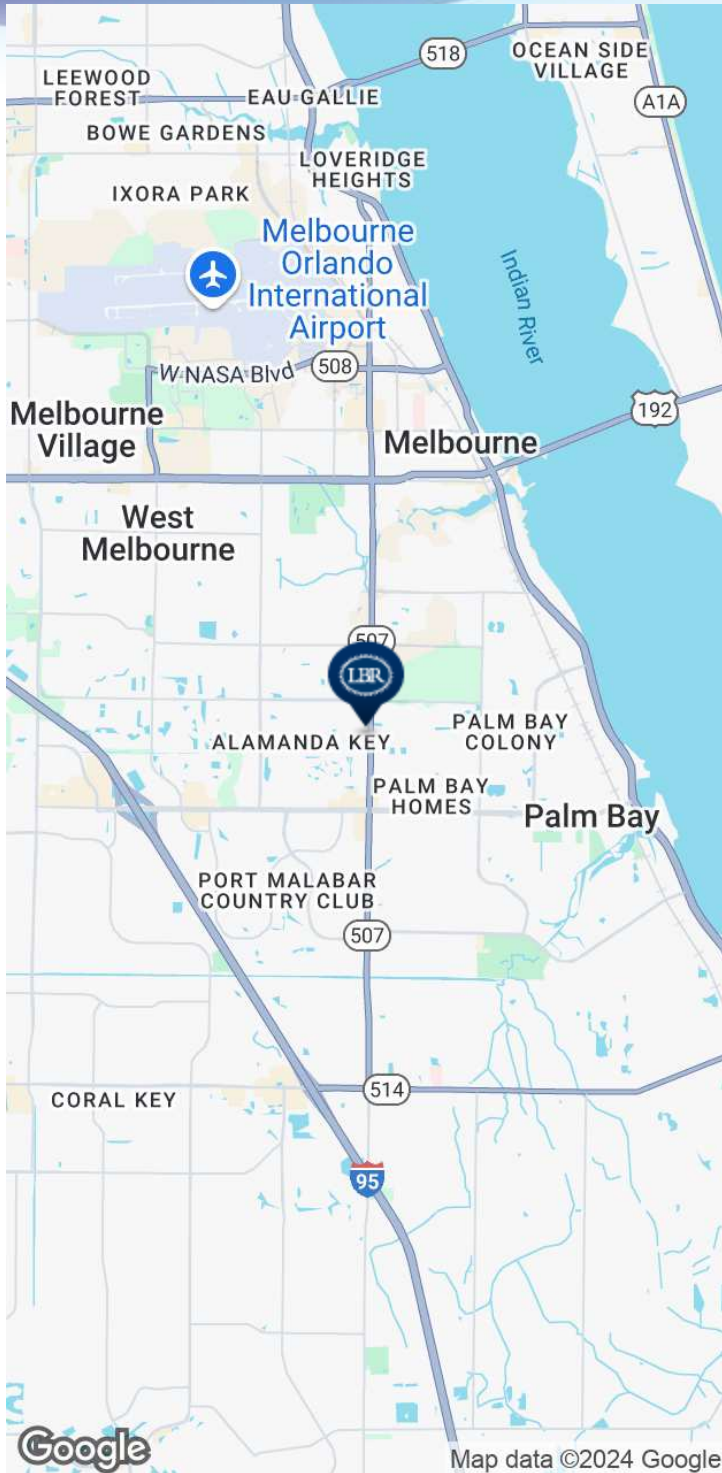
Lightle Beckner Robison, Inc.

321.722.0707 • teamlbr.com
70 W. Hibiscus Blvd.,
Melbourne, FL 32901

Information contained herein has been obtained through sources deemed reliable but cannot be guaranteed as to its accuracy. A purchaser or lessee is expected to verify all information to his/her own satisfaction. Zoning information subject to change and not warranted. Always confirm current requirements with local governing agencies.

LOCATION MAP

• 4320 - 4420 S Babcock St Melbourne, FL 32901



BRIAN L. LIGHTLE, CCIM, SIOR, CRE

Founder | Broker Associate
321.863.3228
brian@teamlbr.com

Lightle Beckner Robison, Inc.

321.722.0707 • teamlbr.com
70 W. Hibiscus Blvd.,
Melbourne, FL 32901

Information contained herein has been obtained through sources deemed reliable but cannot be guaranteed as to its accuracy. A purchaser or lessee is expected to verify all information to his/her own satisfaction. Zoning information subject to change and not warranted. Always confirm current requirements with local governing agencies.