

# NAI Southcoast

# For Lease

## 850 & 3,425 SF Salon & Retail Spaces



Stuart Duffin, P.A., CCIM, SIOR

Principal | Broker Associate  
+1 772 579 0370  
sduffin@naisouthcoast.com  
www.naisouthcoast.com

JJ Sanguily

Sales Associate  
+1 772 834 3519  
jj@naisouthcoast.com  
www.naisouthcoast.com

Offered For Lease at:  
**\$15.00/SF NNN**



# Palm Springs Center - For Lease

6196 SE Federal Highway, Stuart, FL 34997

## Property Details

Location:	6196 SE Federal Highway Stuart, FL 34997
Building Size:	±15,220 SF
Available Space:	6200 (Salon) ±850 SF 6208 (Interior Corner) ±3,425 SF
Pricing:	\$15.00/SF NNN
Year Built:	1990
Zoning:	LC (Limited Commercial District)
Parking:	Ample
Traffic Count:	45,000 AADT on US 1

## Property Overview

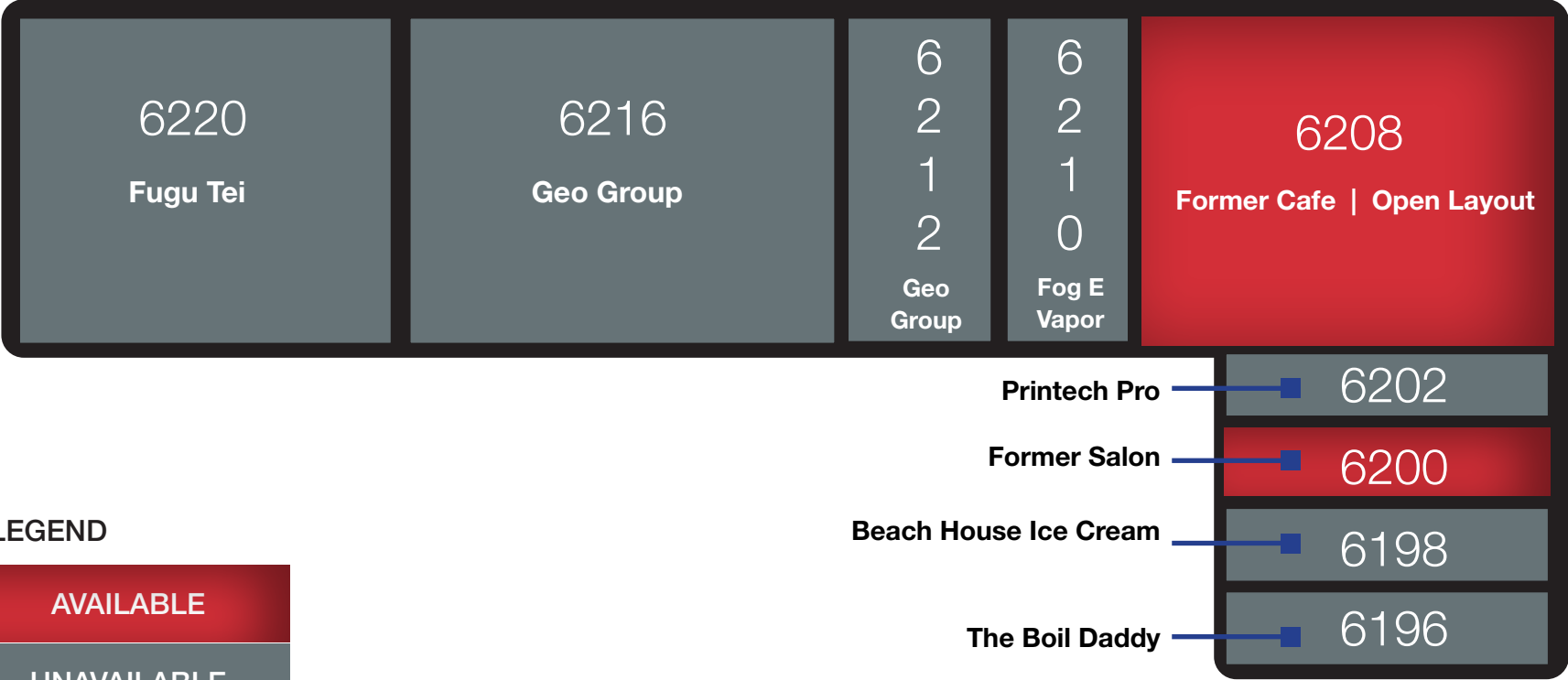
The Palm Springs Center is located at 6196 SE Federal Highway in South Stuart FL. This newly renovated property is well situated directly on SE Federal Highway with high traffic counts, making it ideal for any retail use.



# Palm Springs Center - For Lease

6196 SE Federal Highway, Stuart, FL 34997

# Site Plan



### LEGEND

AVAILABLE

UNAVAILABLE



# Palm Springs Center - For Lease

6196 SE Federal Highway, Stuart, FL 34997

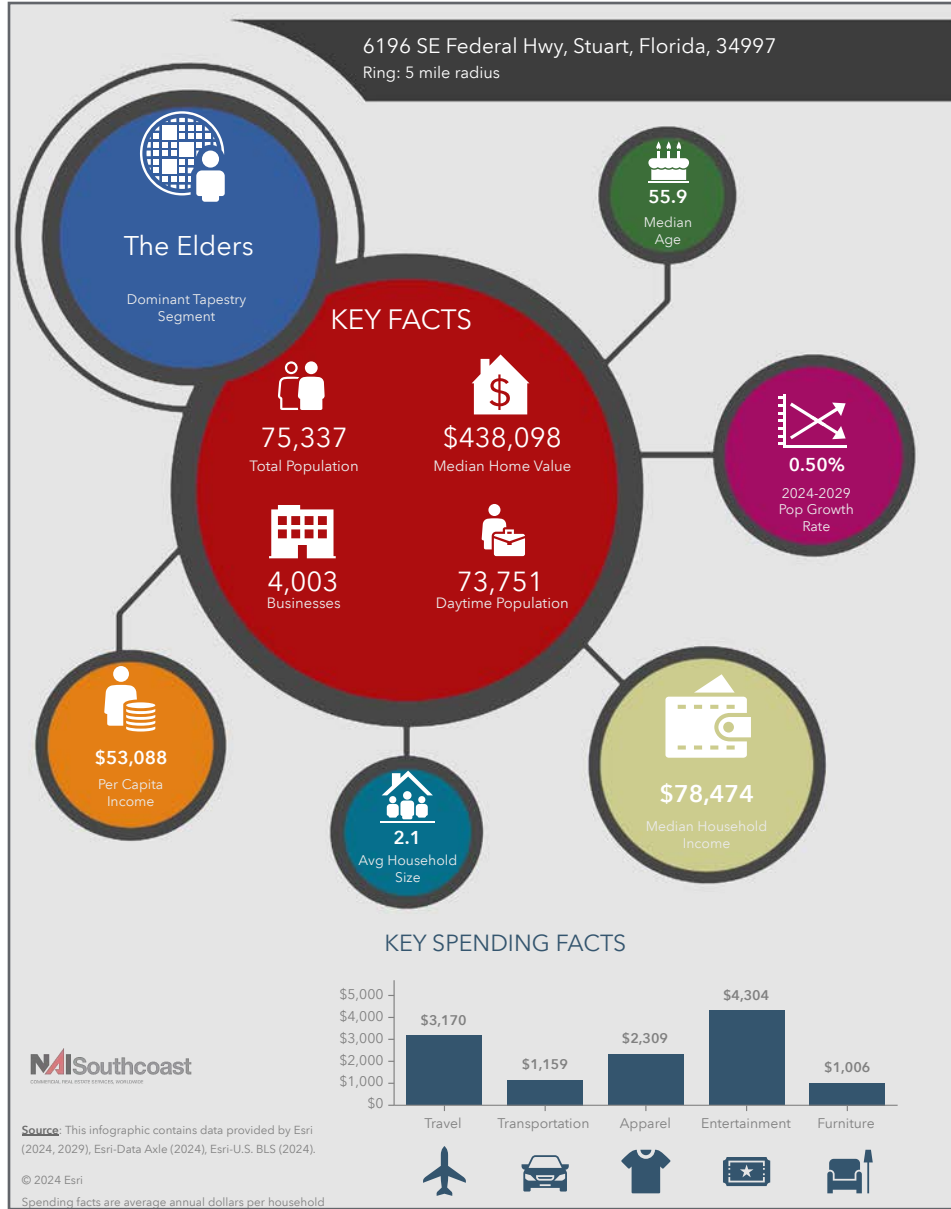




# Palm Springs Center - For Lease

6196 SE Federal Highway, Stuart, FL 34997

## 2024 Demographics



### Population

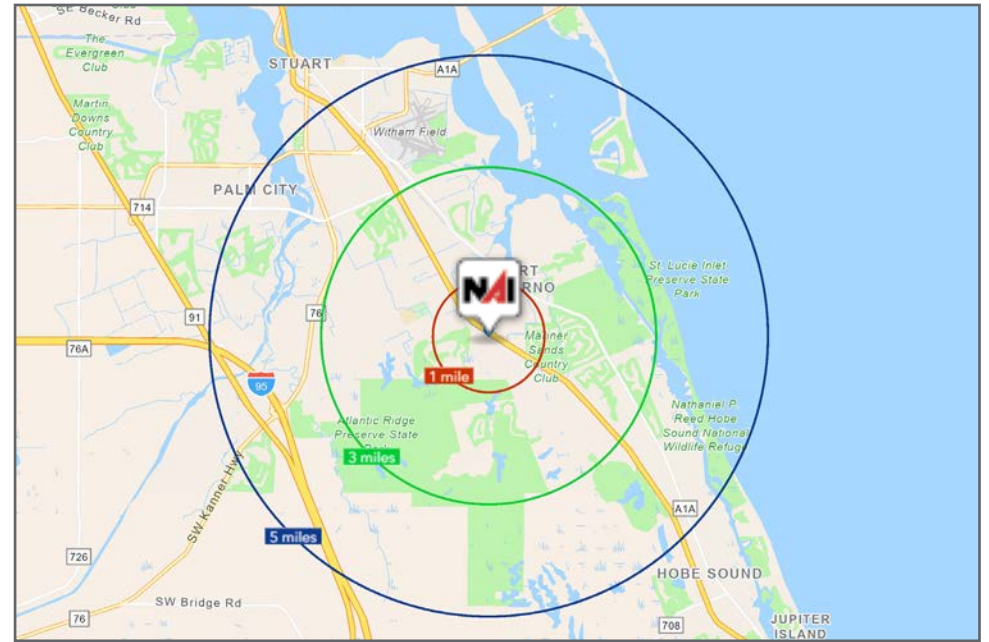
- 1 Mile: 7,675
- 3 Mile: 39,588
- 5 Mile: 75,337

### Average Household Income

- 1 Mile: \$99,133
- 3 Mile: \$114,736
- 5 Mile: \$116,755

### Median Age

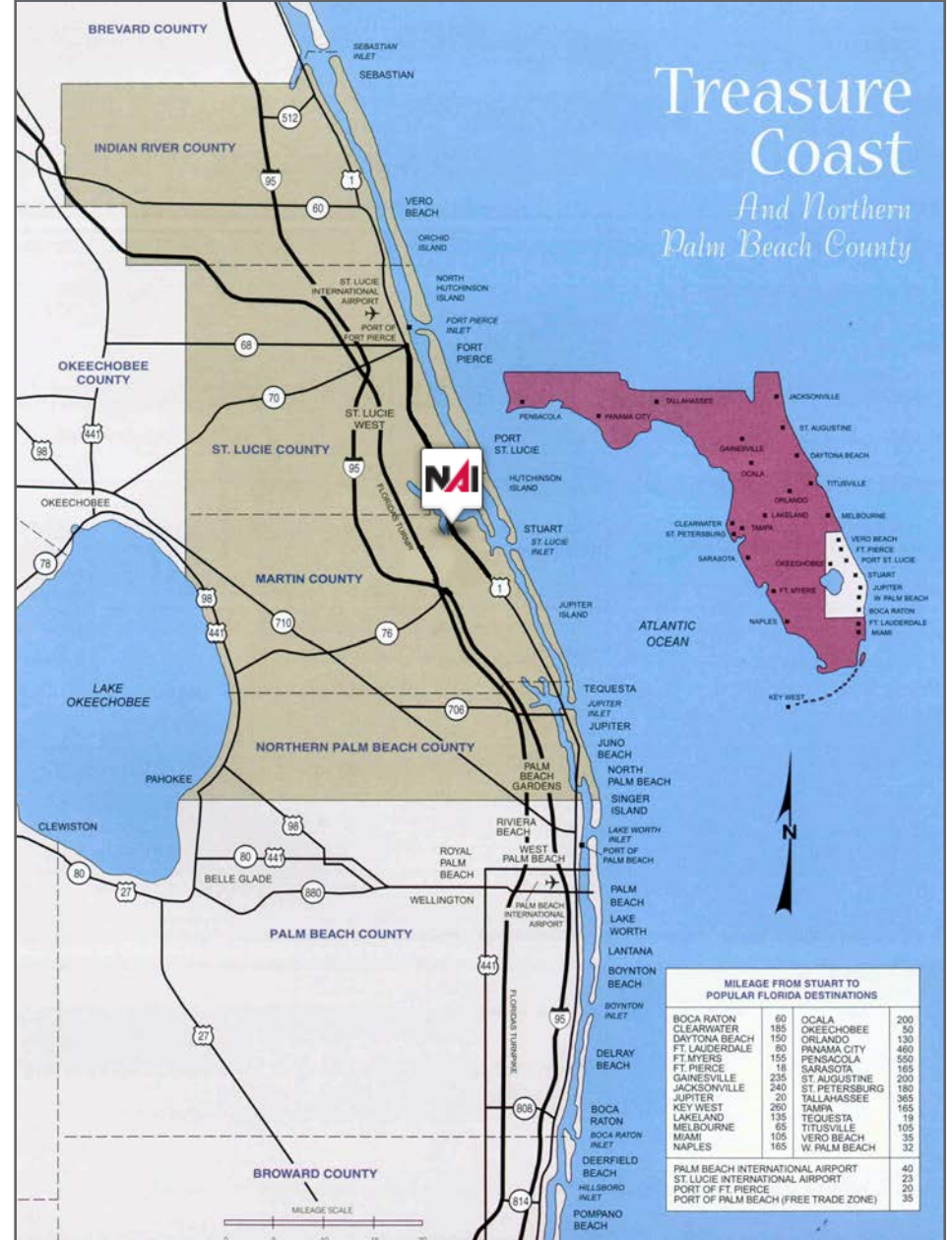
- 1 Mile: 51.6
- 3 Mile: 55.9
- 5 Mile: 55.9



# Palm Springs Center - For Lease

6196 SE Federal Highway, Stuart, FL 34997

# Area Maps





# City Overview

Stuart, Florida



Stuart, Florida is located on Florida's East Coast, which borders the St. Lucie River and West of the Indian River. The climate is pleasant with mild winters and warm summers. The annual average temperature is 72 degrees. Annual rainfall averages 60 inches.

Stuart is famed for its exceptional sailfishing and all other types of sport fishing. You can enjoy ocean fishing, river and bay fishing, and fresh water fishing. The North and South forks of the St. Lucie River are tropical wonderlands for cruises. Stuart has quaint older neighborhoods in the downtown area, including a mixture of townhomes and condominiums. Stuart's successful revitalization program has given the Downtown area a pleasant ambiance, with shops and restaurants lining the streets.

The top major employers are, Cleveland Clinic Hospital, Vought Aircraft, Municipal Government, and thousands of successful small businesses. The economy is driven by retail service, hospitality, construction and government sectors located throughout the city.

At the present time, Stuart is a growing community, annexing new properties north and south of the city, currently 6.25 square miles. Revitalization continues in the Potsdam section of the downtown area as well as North of the Roosevelt Bridge. Completed in 1996, the Roosevelt Bridge, is a prominent feature in the area, allowing for easy connectivity and accessibility to Stuart's Public Beaches.



# Regional Overview

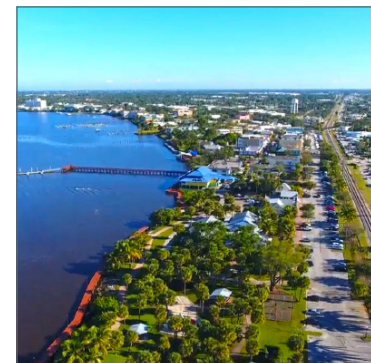
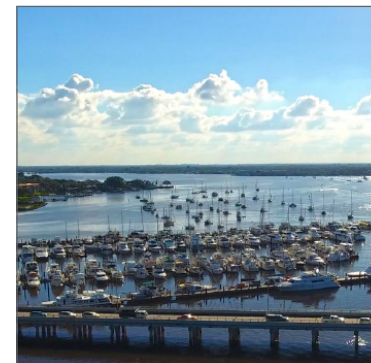
Martin County, Florida

The cities that make up Martin County include Jensen Beach/Rio, Stuart/Sewall's Point, Hutchinson Island, Hobe Sound, Jupiter/ Tequesta, Palm City, Port Salerno and Indiantown. Martin County is a wonderful place to visit and live, with beaches, golf, fishing and boating. The County boasts arts, quaint downtowns with shops, gourmet dining, galleries, museums, historic places, festivals and more.

## *Martin County is for...*

The golf enthusiast... Martin County is home to over 35 world-class golf courses all within a 15-mile radius. The sun worshiper... The County offers its visitors and residents alike some of the finest beaches on the east coast. The discriminating arts shopper... More than 20 galleries participate in a monthly First Thursday gallery night. Many of these galleries are in the historic downtowns of Stuart, Jensen Beach, Port Salerno and Hobe Sound. The music lover... The historic Lyric Theatre offers a wide-array of first class talent nearly 300 days a year... This acoustically amazing theatre features concerts for all music lovers, from classical to rock and roll, and theatrical performances by local and national talent.

Mark your calendars for a plethora of events to look forward to in Martin County, Florida. The Stuart Air Show, Stuart Boat Show, ArtsFest, and the Martin County Fair are just some of the many events taking place throughout the year. The Treasure Coast Children's Museum, located at Indian Riverside Park, is a great place for kids and families, offering a water play area, fishing, and a riverfront view. Often, there are events in the park including concerts, orchid shows, and more. Indian Riverside Park also features the Maritime and Yachting Museum. Hutchinson Island is home to the Elliott Museum which celebrates the genius of innovation, creativity and the historical events of Martin County. Named after the prolific inventor Sterling Elliott, the museum hosts permanent exhibits showcasing Model A Trucks, early transportation, the history of Stuart and its surrounding regions, and baseball memorabilia. For the scientifically minded and curious kids, the Florida Oceanographic Coastal Center offers fun opportunities to learn about our local ecosystem.





# For Lease - 2 Units



Palm Springs Center | 6196 SE Federal Highway, Stuart, FL 34997

## 850 & 3,425 SF Salon & Retail Spaces

### Highlights

- Total building size - 15,220 SF
- Built in 1990
- AADT 45,000 on US 1
- Recently renovated retail center
- 2 units available



**Stuart Duffin, P. A.,  
CCIM, SIOR**

Principal | Broker Associate  
+1 772 579 0370  
sduffin@naisouthcoast.com



**JJ Sanguily**

Sales Associate  
+1 772 834 3519  
jj@naisouthcoast.com



100 SW Albany Avenue, 2nd Floor  
Stuart, Florida 34994  
+1 772 286 6292  
www.naisouthcoast.com