

SOUTHCROSS COMMONS

3000 County Road 42 W | Burnsville, MN 55337

1,620 SF to 5,355 SF Office/Medical Space For Lease

Space Available:

- Suite 100: 5,355 sf (medical office space)
- Suite 302: 1,620 sf
- Lease Rate: \$13.00 psf Net
- 2024 CAM/Utilities: \$6.69 psf and Tax: \$3.46 psf



Highlights and Features:

- Great fit for professional office/medical users
- Common areas are newly remodeled
- Located 1 mile west of Burnsville Center
- Ideal frontage along County Road 42
- Near the Burnsville/Savage border
- Attractive office space
- Year Built: 2001
- 3 floors
- Elevator
- Golf simulator, putting green and fitness center
- Several private offices built out
- Kitchenette
- Large conference room
- High-end wood finishes
- Electronic kiosk
- Parking: 120 spaces
- Proximity to restaurants, shopping, and retailers
- Co-tenants: Ryan Real Estate, Life Renewal Counseling, Medallion Capital, Bass Law Firm, Stephen C. Fiebiger Law Office, Gold Leaf Estate Planning, Thrivent Financial, Farmers Insurance, Tyler Flatmoe Agency, Higher Recruitment, and Renew Women's Health

Christianson & Company
COMMERCIAL REAL ESTATE SERVICES
www.SpaceAvailableMN.com

CORFAC
INTERNATIONAL

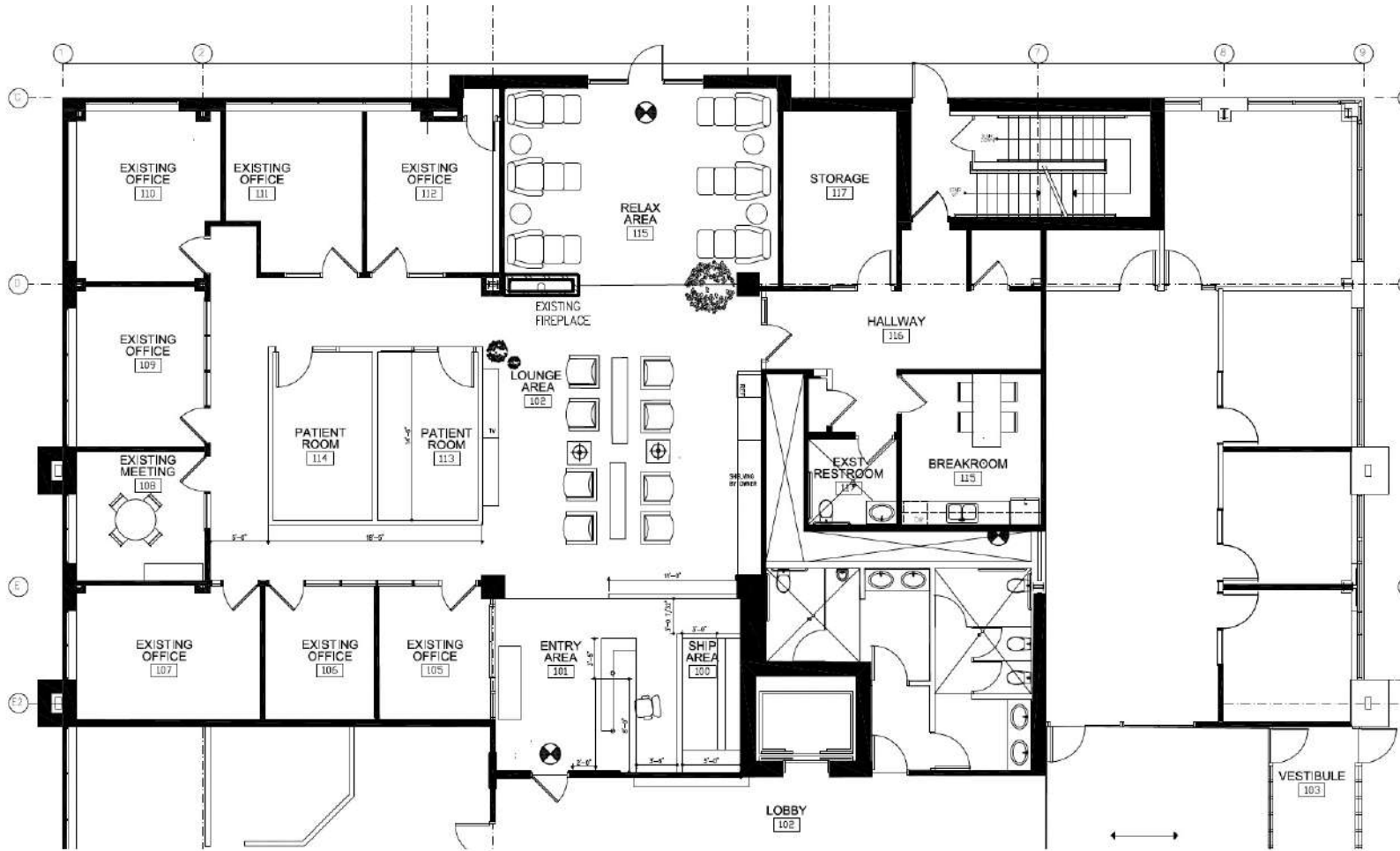
LAURA GILL
612.310.5399

laura@christiansonandco.com

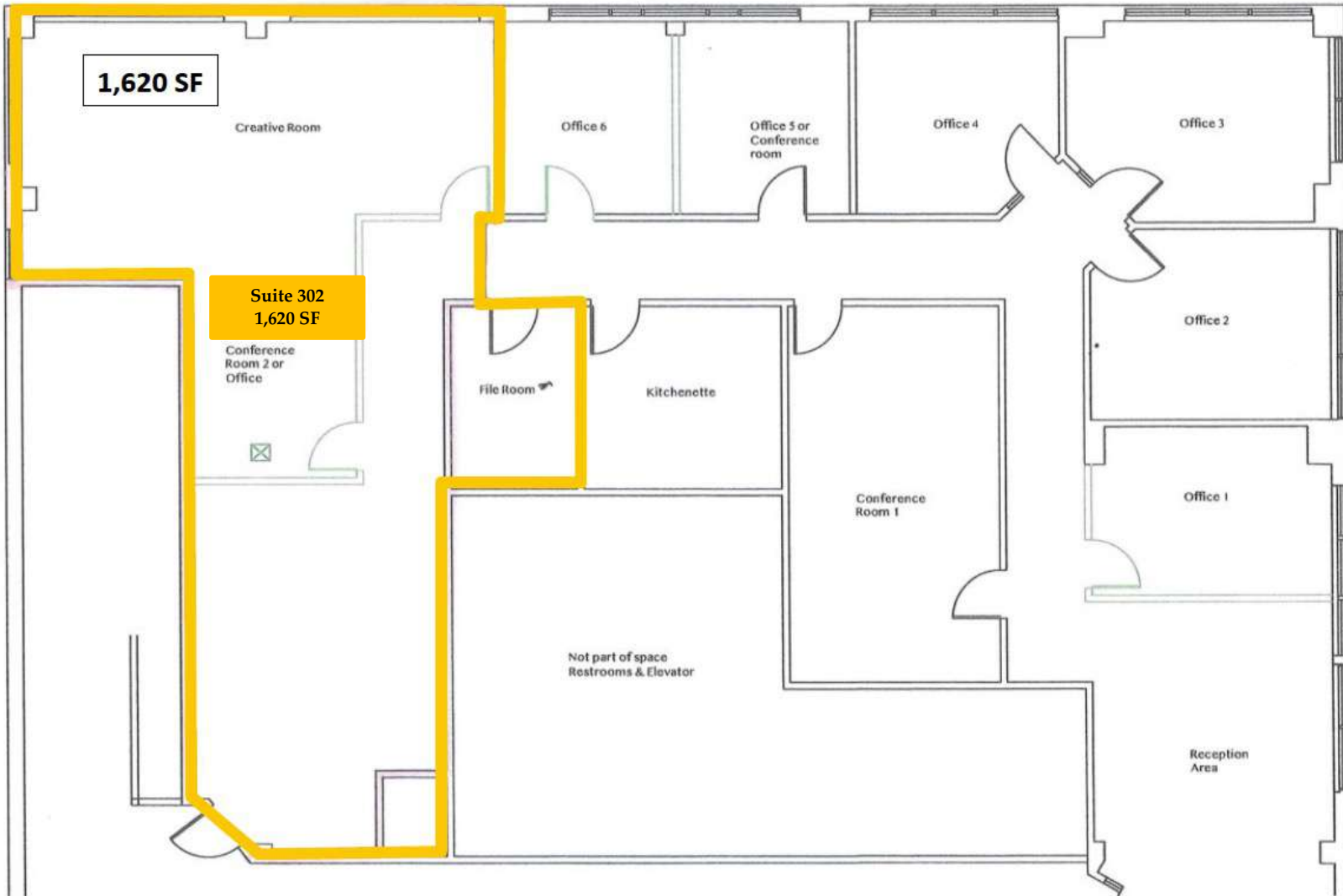
This information is accurate as of the date of printing and is subject to change without notice. All information is deemed accurate, but cannot be guaranteed.

www.SpaceAvailableMN.com
info@SpaceAvailableMN.com | 952.921.5844

Space Plan | Suite 100



Third Floor Plan



Suite 100 Interior Photos



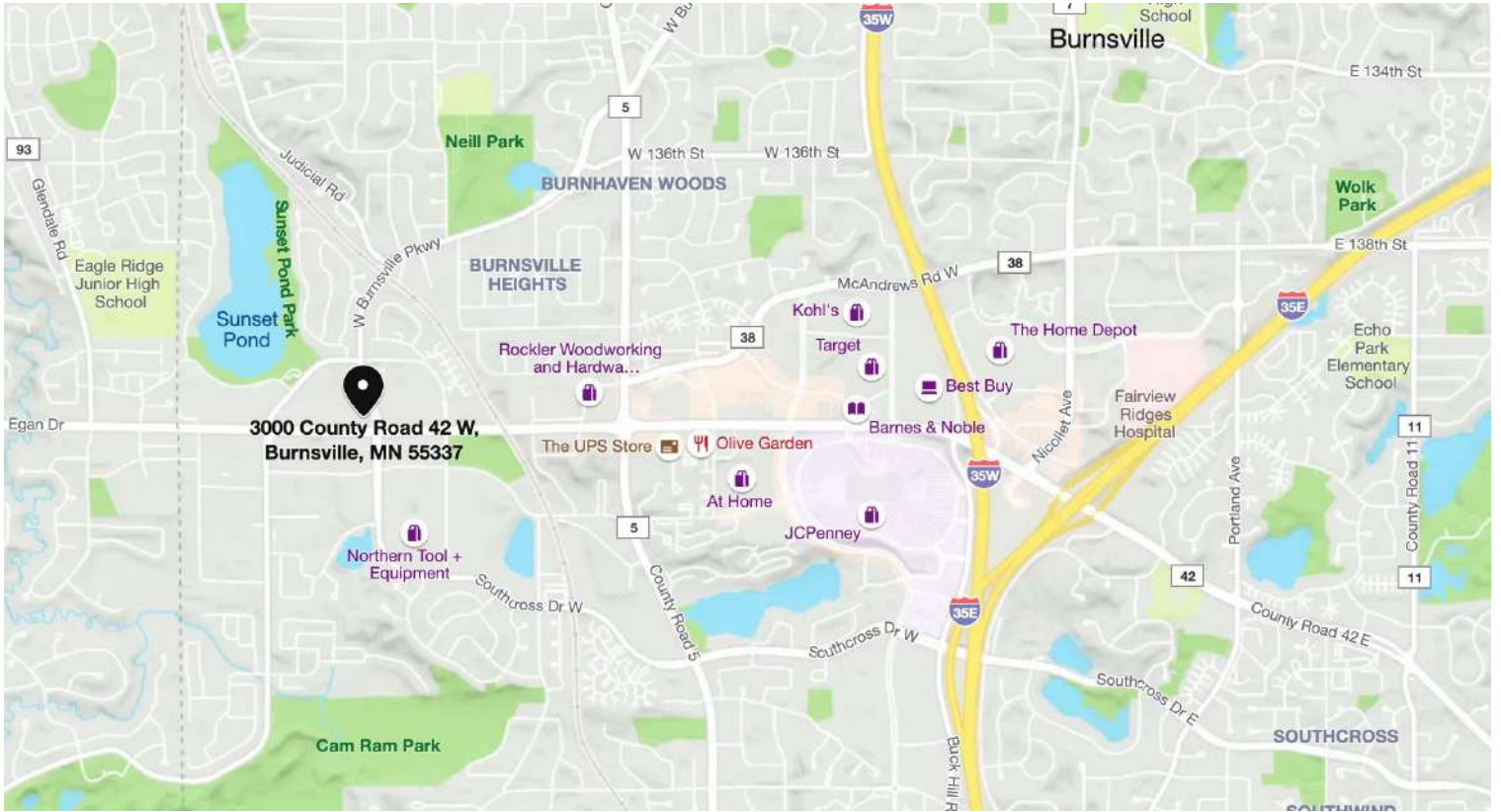
This information is accurate as of the date of printing and is subject to change without notice. All information is deemed accurate, but cannot be guaranteed.

Interior Photos - Common Area, Golf Simulator and Fitness Center



This information is accurate as of the date of printing and is subject to change without notice. All information is deemed accurate, but cannot be guaranteed.

Map



Aerial



This information is accurate as of the date of printing and is subject to change without notice. All information is deemed accurate, but cannot be guaranteed.