

**FOR SALE**  
**10,500 SF | OFFICE, WAREHOUSE FACILITY**  
382 PONDELLA ROAD, NORTH FORT MYERS, FL 33903



## PROPERTY HIGHLIGHTS

**BUILDING SIZE:** 10,500 SF  
**LAND SIZE:** 2.56 Acres  
**SALE PRICE:** Call for Price



## PROPERTY FEATURES

- 6,788 SF Column-Free Warehouse
- 2,125 SF Office
- 1,587 SF Showroom Area
- 18 Loading Doors
  - 16 Box Truck-High Doors
  - 2 (48") Dock-High Doors
  - 1 Ramped Drive-In Door
  - 1 Drive-In Door to Showroom
- 14' - 16' Clear Height
- 31 Parking Spaces
- Built in 2015
- Zoned CG
- Fenced Lot

**Derek Bornhorst, SIOR, CCIM**  
Principal  
239.210.7607  
dbornhorst@lee-associates.com

**Jessica Mizrahi, SIOR**  
Principal  
813.804.0886  
jmizrahi@lee-associates.com

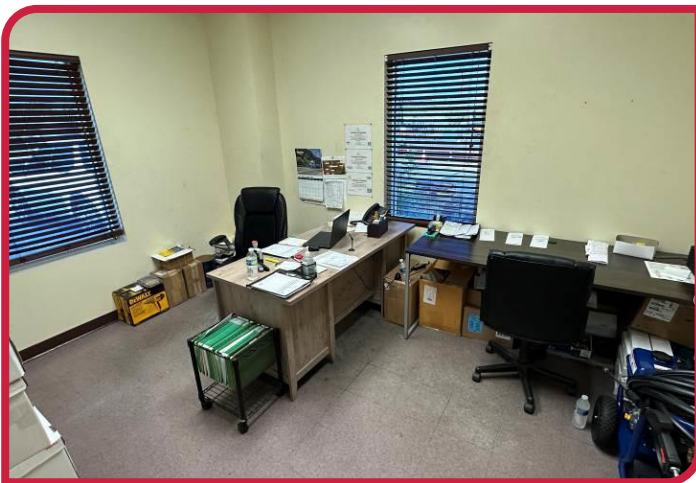
**Jackson O'Neill**  
Director  
412.208.5869  
joneill@lee-associates.com

**Adam Bornhorst**  
Vice President  
239.210.7616  
abornhorst@lee-associates.com

All information furnished regarding property for sale, rental or financing is from sources deemed reliable, but no warranty or representation is made to the accuracy thereof and same is submitted to errors, omissions, change of price, rental or other conditions prior to sale, lease or financing or withdrawal without notice. No liability of any kind is to be imposed on the broker herein.

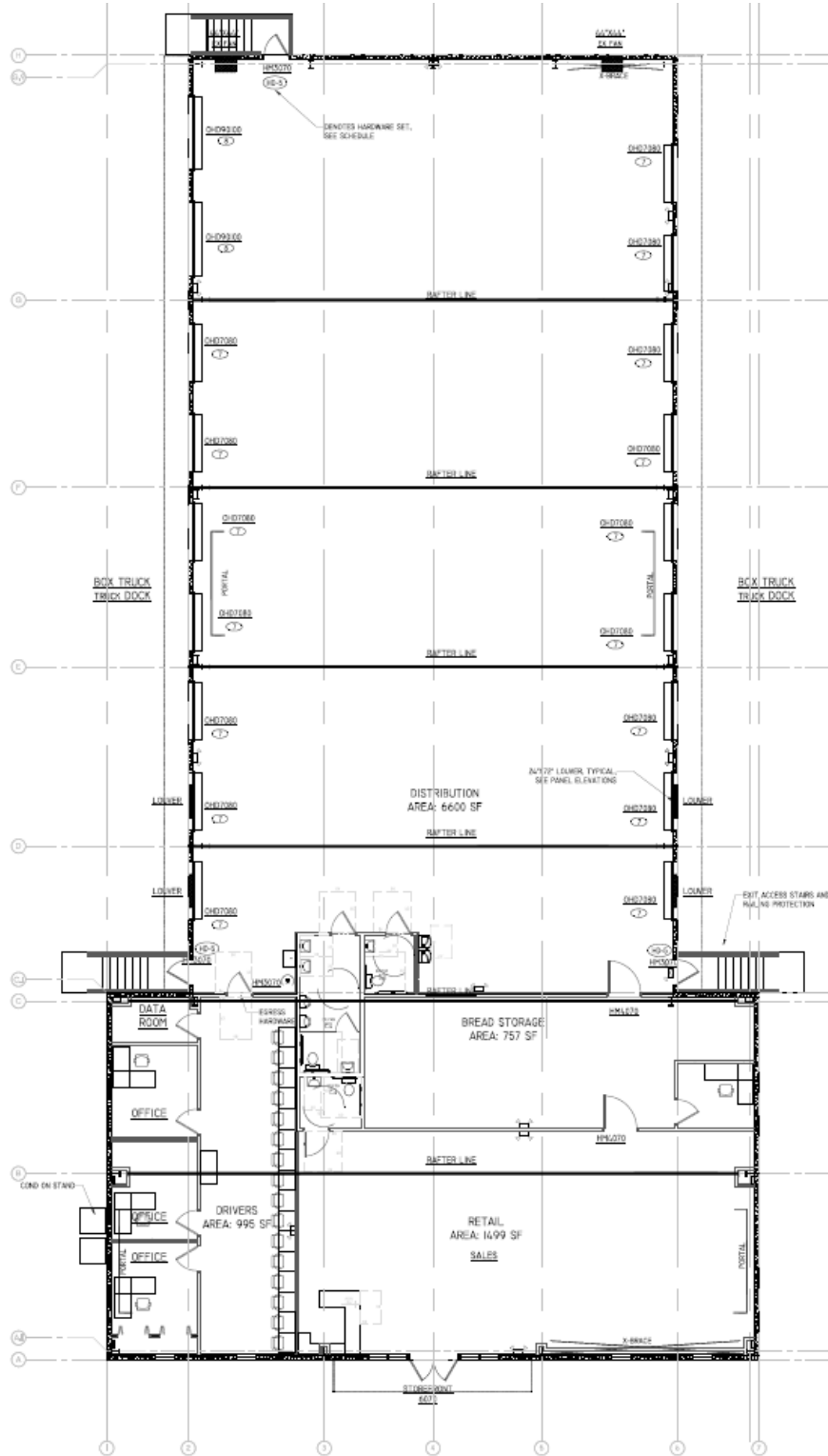
**FOR SALE**  
10,500 SF | OFFICE, WAREHOUSE FACILITY  
382 PONDELLA ROAD, NORTH FORT MYERS, FL 33903

## PROPERTY PHOTOS

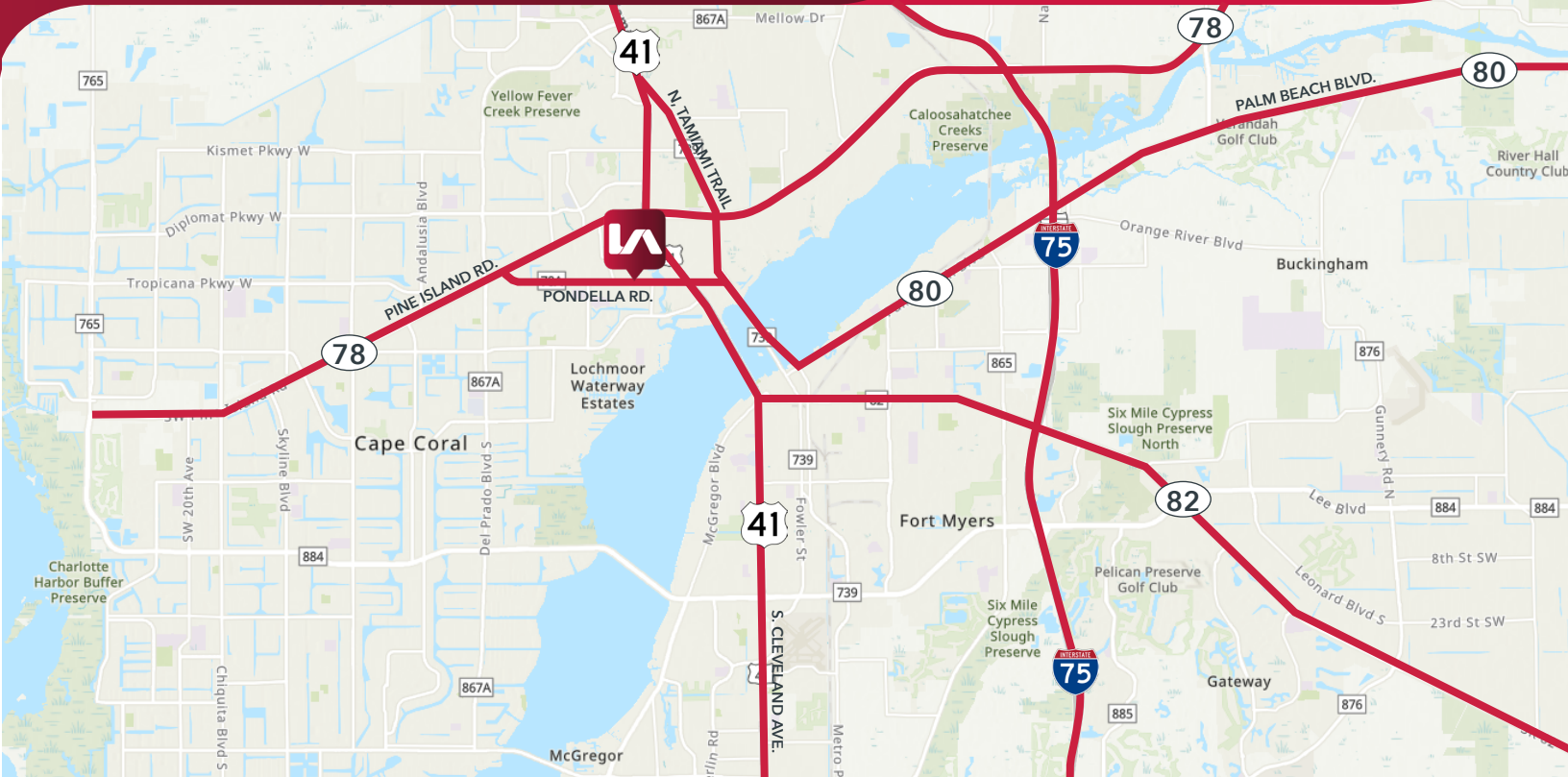


**FOR SALE**  
**10,500 SF | OFFICE, WAREHOUSE FACILITY**  
382 PONDELLA ROAD, NORTH FORT MYERS, FL 33903

**FLOOR PLAN**



**FOR SALE**  
**10,500 SF | OFFICE, WAREHOUSE FACILITY**  
**382 PONDELLA ROAD, NORTH FORT MYERS, FL 33903**



**DISTANCES**

**US HWY 41:** 0.3 Miles

**I-75:** 6.5 Miles

**SW FL INT'L**

**AIRPORT:** 14 Miles

**NAPLES:** 32 Miles

**SARASOTA:** 63 Miles



**Derek Bornhorst, SIOR, CCIM**  
 Principal  
 239.210.7607  
 dbornhorst@lee-associates.com

**Jessica Mizrahi, SIOR**  
 Principal  
 813.804.0886  
 jmizrahi@lee-associates.com

**Jackson O'Neill**  
 Director  
 412.208.5869  
 joneill@lee-associates.com

**Adam Bornhorst**  
 Vice President  
 239.210.7616  
 abornhorst@lee-associates.com