

For Lease
±1,067-27,253 SF
Premier Boca Raton
Office/Medical Space

**NOW MEDICAL
APPROVED!**
Customizable
Ground-Floor Suites



Yamato Office Center

999 & 1001 Yamato Road
Boca Raton, FL 33431



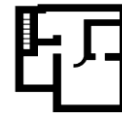
Property Features:

- **NEW outdoor seating lounge**
- Fantastic office/medical space with beautiful lobbies, lush landscaping, and a great corporate park location near the best of Boca Raton
- Amenities include keycard access, tenant conference facility, outside seating area, 24/7 HVAC, and professional property management
- Abundant parking for patients and staff, with covered available
- Direct visibility and access from Yamato Road
- Just 1 minute from I-95, 7 minutes to the Florida Turnpike, and near two major hospitals

Key Highlights:



Fantastic location
near outstanding
lifestyle amenities



Customize your
dream space



Medical use
approved

Richard W. Brockney
Director | rbrockney@mhcreal.com

Neil E. Merin, SIOR, CCIM
Chairman | merinlistings@mhcreal.com



FOR LEASE: YAMATO OFFICE CENTER

Medical-Approved Space Near the Best of Boca Raton

999-1001 YAMATO ROAD, BOCA RATON, FL 33431



Strategic Location with Exceptional Neighboring Amenities

This Class-A office center with medical zoning offers easy access to I-95 and is well-located in a blossoming live-work-play environment with over 2,500 newly developed residential units nearby.

Yamato Office Center is minutes away from countless dining, retail, and lifestyle amenities, with a Tri-Rail stop within walking distance and a planned Brightline stop.



NEW Outdoor Lounge



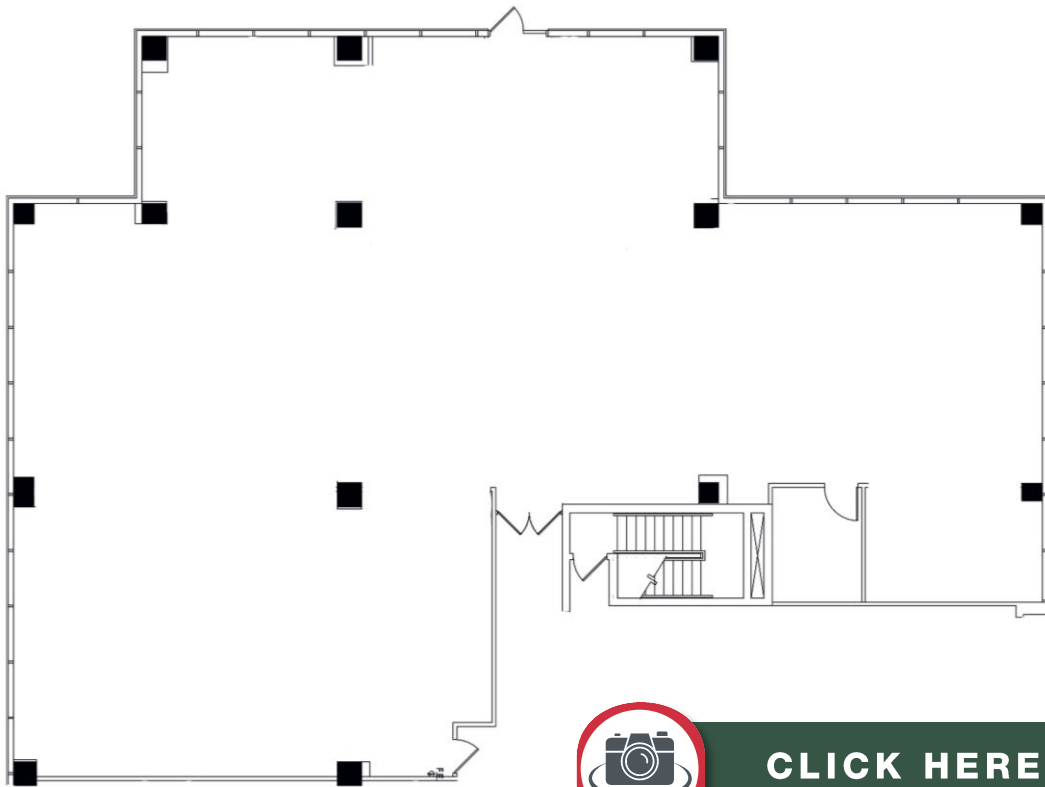
For More Information:

Richard W. Brockney or Neil E. Merin, SIOR, CCIM | 561 471 8000 | www.mhcreal.com

FOR LEASE: YAMATO OFFICE CENTER

Your Vision, Your Practice – Customize Your Space

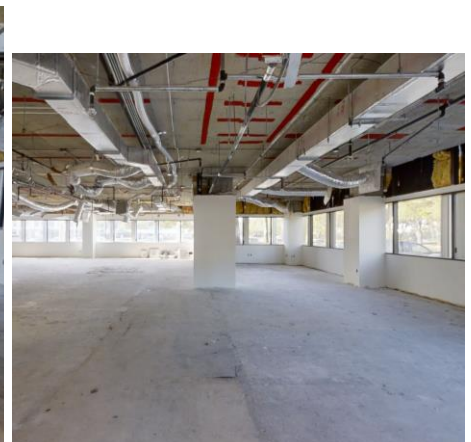
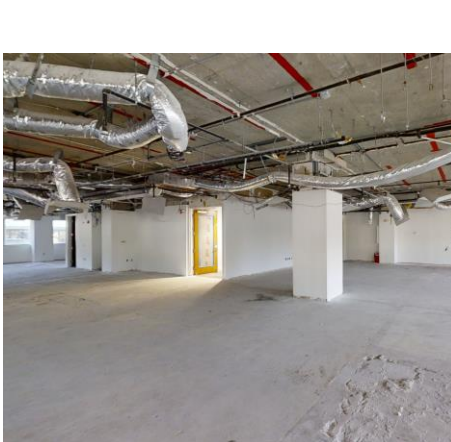
999-1001 YAMATO ROAD, BOCA RATON, FL 33431



**CLICK HERE
FOR 3D TOUR!**

1001 - Suite 101 ±5,227 SF

- Spacious ground floor suite with panoramic window lines
- Double-door entrance off main lobby hallway
- Raw space available for your dream customization



For More Information:

Richard W. Brockney or Neil E. Merin, SIOR, CCIM | 561 471 8000 | www.mhcreal.com