



# YAMATO OFFICE CENTER



**NAI** Merin Hunter  
Codman, Inc.

Commercial Real Estate Services, Worldwide.

For Lease  
±1,067-24,031 SF  
Premier Boca Raton  
Office/Medical Space

**Move-In Ready Spaces  
& Full Floor with Signage**



## Yamato Office Center

999 & 1001 Yamato Road  
Boca Raton, FL 33431



### Property Features:

- **NEW outdoor seating lounge**
- Fantastic office space with beautiful lobbies, lush landscaping, and a great corporate park location near the best of Boca Raton
- Amenities include keycard access, tenant conference facility, outside seating area, 24/7 HVAC, and ample parking with covered available
- Separately metered electric at 1001 Yamato
- Direct visibility and access from Yamato Road
- Just 1 minute from I-95, 7 minutes to the Florida Turnpike, and near two major hospitals

### Key Highlights:



Fantastic location  
near outstanding  
lifestyle amenities



Variety of floor  
plan sizes to suit  
your needs



Medical use  
approved

**Richard W. Brockney**  
Director | [rbrockney@mhcreal.com](mailto:rbrockney@mhcreal.com)

**Neil E. Merin, SIOR, CCIM**  
Chairman | [merinlistings@mhcreal.com](mailto:merinlistings@mhcreal.com)

FOR LEASE: YAMATO OFFICE CENTER

# Move-In Ready Office Space Near I-95

999-1001 YAMATO ROAD, BOCA RATON, FL 33431



## Strategic Location with Exceptional Neighboring Amenities

This Class-A office center with medical zoning offers easy access to I-95 and is well-located in a blossoming live-work-play environment with over 2,500 newly developed residential units nearby.

Yamato Office Center is minutes away from countless dining, retail, and lifestyle amenities, with a Tri-Rail stop within walking distance and a planned Brightline stop.



**CLICK HERE FOR 3D TOURS!**

## NEW Outdoor Lounge

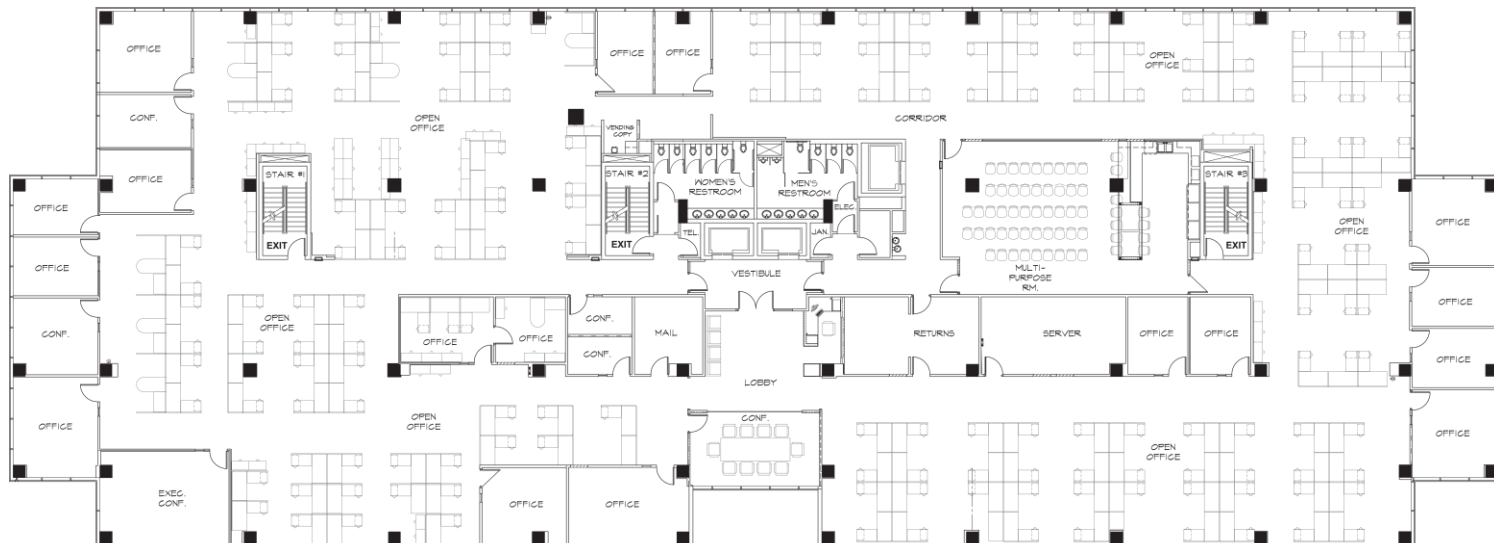


**For More Information:**

Richard W. Brockney or Neil E. Merin, SIOR, CCIM | 561 471 8000 | [www.mhcreal.com](http://www.mhcreal.com)

# FOR LEASE: YAMATO OFFICE CENTER

## Full Floor with Building & Monument Signage Available

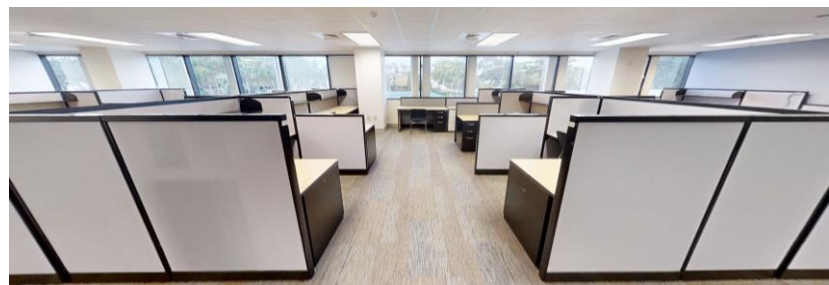
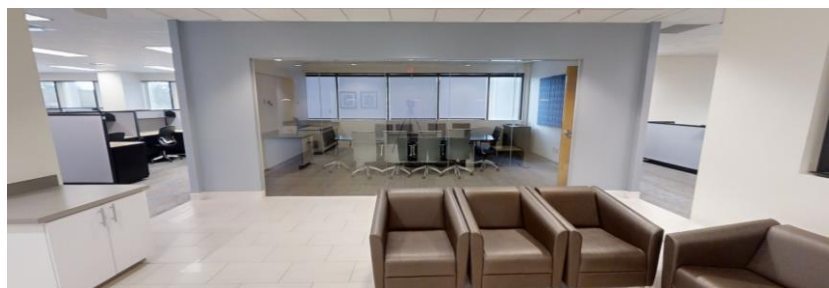


### 1001 - Suite 200 ±8,000-24,031 SF

- Rare plug & play corporate HQ opportunity, with functional layout & furniture available
- Mostly open plan, divisible from ±8,000 SF
- Multiple signage opportunities
- Abundant natural light through panoramic window lines
- Modern build-out including glass sidelights, diverse meeting rooms, open work areas, a well-equipped kitchen/breakroom with bar and round table seating, and more



**CLICK HERE  
FOR 3D TOUR!**



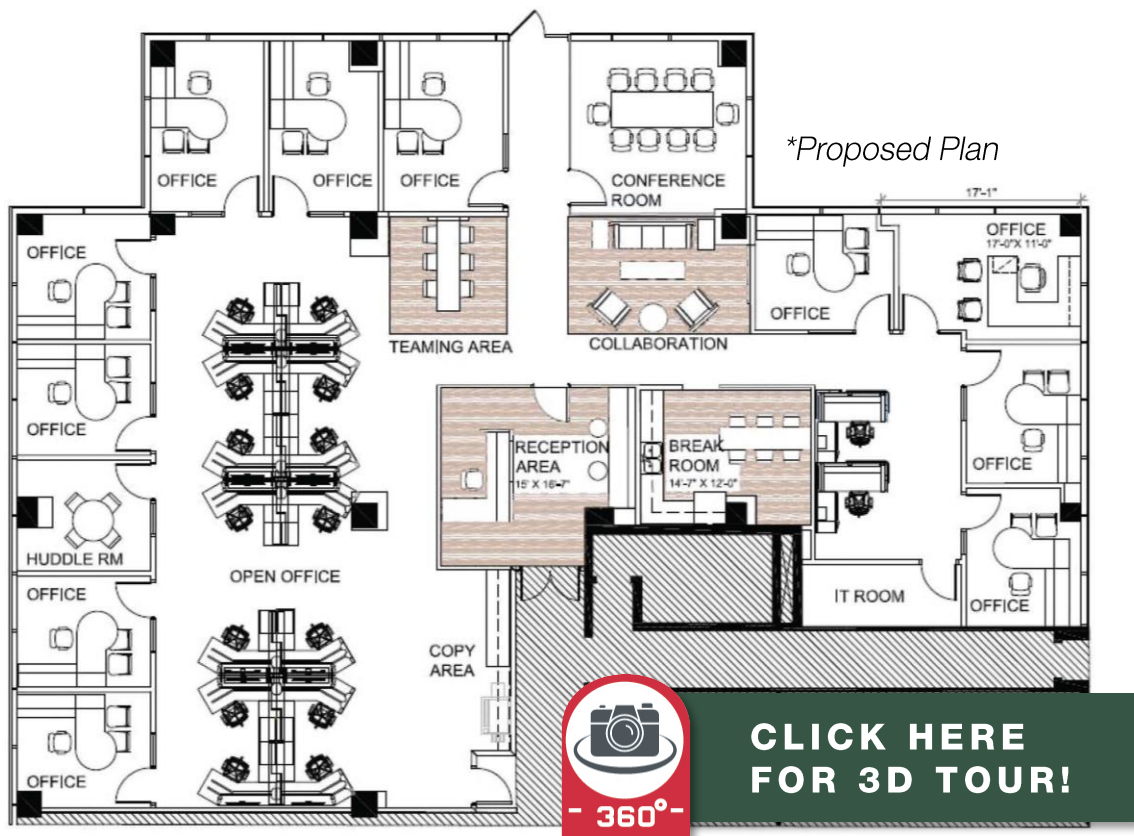
### For More Information:

Richard W. Brockney or Neil E. Merin, SIOR, CCIM | 561 471 8000 | [www.mhcreal.com](http://www.mhcreal.com)

## FOR LEASE: YAMATO OFFICE CENTER

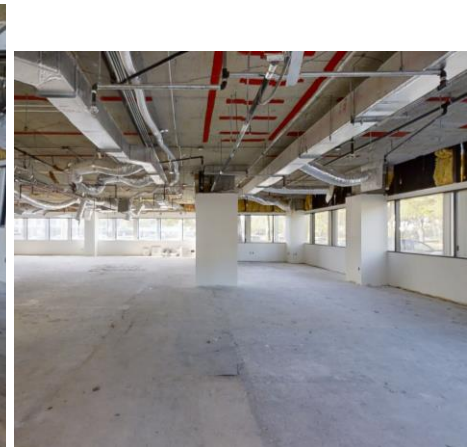
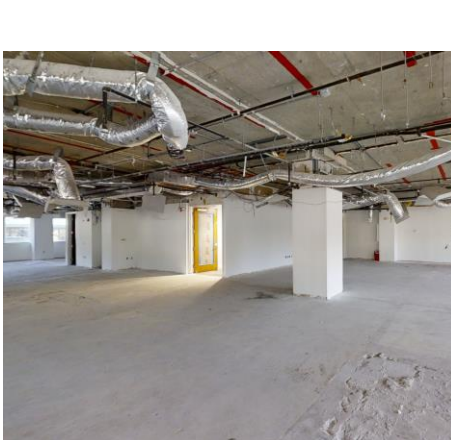
# From Concept to Creation – Customize Your Perfect Space

999-1001 YAMATO ROAD, BOCA RATON, FL 33431



## 1001 - Suite 101 ±5,227 SF

- Spacious ground floor suite with panoramic window lines
- Double-door entrance off main lobby hallway
- Raw space available for your dream customization



### For More Information:

Richard W. Brockney or Neil E. Merin, SIOR, CCIM | 561 471 8000 | [www.mhcreal.com](http://www.mhcreal.com)

## FOR LEASE: YAMATO OFFICE CENTER

# Brand New Spec Suites Coming Soon

999-1001 YAMATO ROAD, BOCA RATON, FL 33431

## 999 – Second Floor ±1,671-16,613 SF



Our new spec suites offer efficient layouts designed for productivity and can be leased individually or combined for more space, providing flexibility to meet your business needs. Located in Boca Raton with direct access to Yamato Road and near I-95, these suites offer unmatched convenience and a prime location for your growing business.

**For More Information: 561 471 8000**

Richard W. Brockney  
Director | [rbrockney@mhcreal.com](mailto:rbrockney@mhcreal.com)

Neil E. Merin, SIOR, CCIM  
Chairman | [merinlistings@mhcreal.com](mailto:merinlistings@mhcreal.com)