

**FOR SALE**  
**5303 PATCH ROAD**  
ORLANDO, FL 32822

**LEE & ASSOCIATES**  
COMMERCIAL REAL ESTATE SERVICES



## PROPERTY HIGHLIGHTS

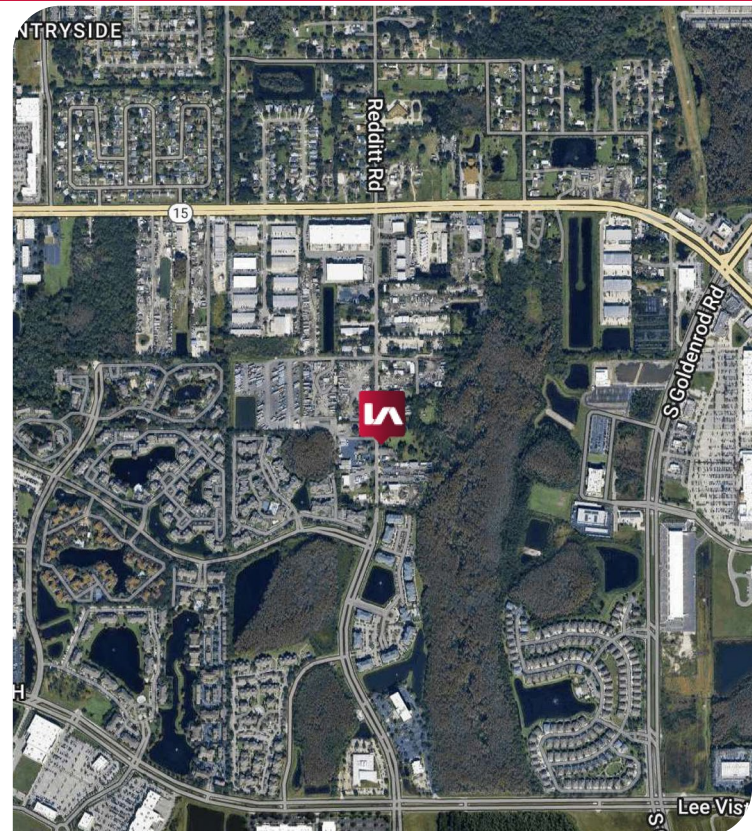
- Building Size: 792 SF
- Land Size: 0.17 Acres
- Three (3) offices, a kitchen, and one (1) bathroom
- Carport that may accommodate four (4) cars
- Fully fenced and secured yard area
- Located just north of Orlando International Airport
- Zoning: Ind-1/Ind-5 (Orange County) which allows outdoor storage, contractor's offices, and vehicle sales/repair, among other uses. View all permitted uses [here](#)

**Sale Price: Call Broker For Information**

### Listing Contact:

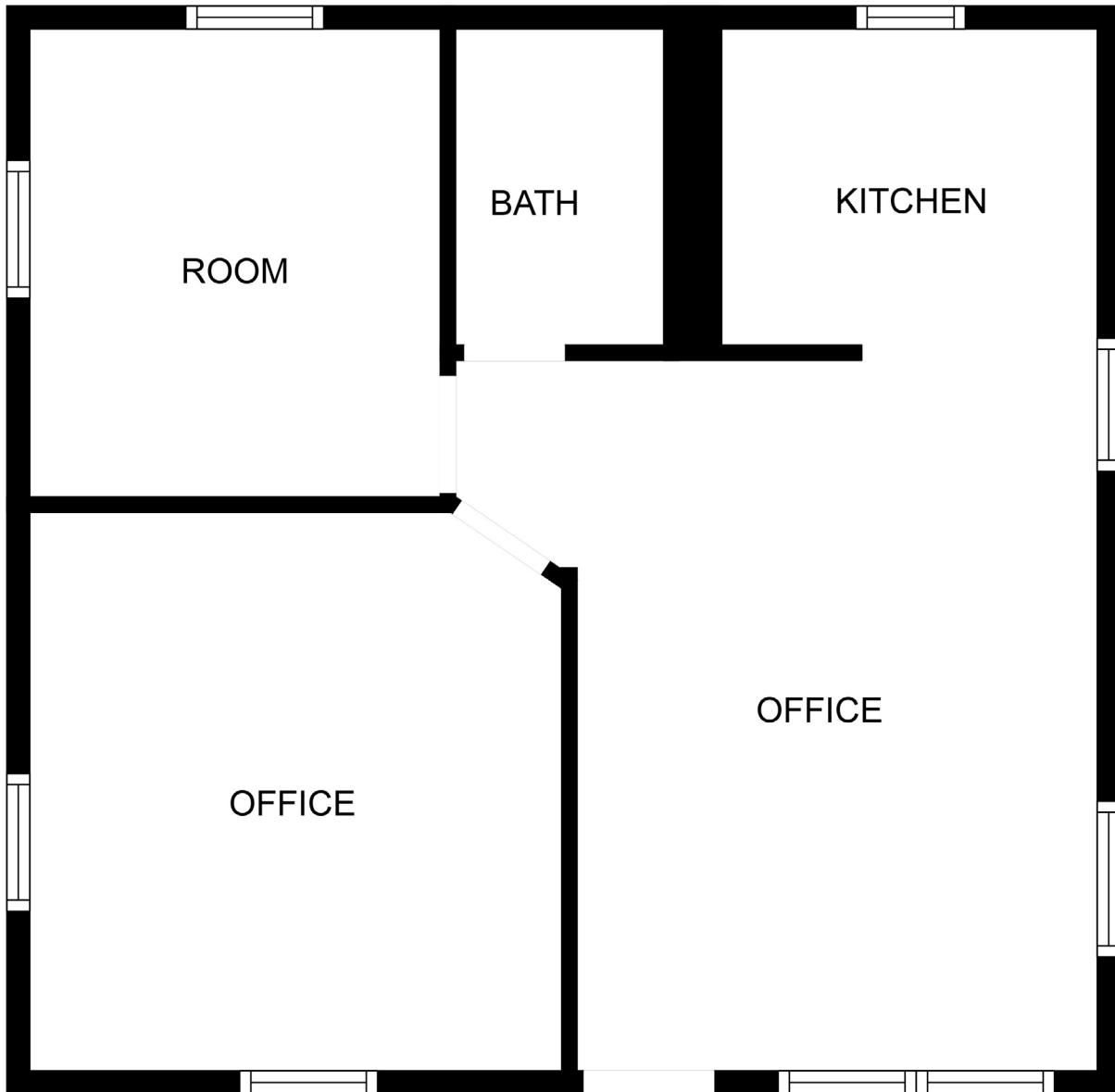
Derek Riggleman, SIOR  
Senior Vice President | Principal  
driggleman@lee-associates.com  
D 321.281.8507

Brock Holston  
Associate  
bholston@lee-associates.com  
D 321.281.8505



**5303 PATCH ROAD**  
ORLANDO, FL 32822

**FLOOR PLAN**



Listing Contact:

Derek Riggelman, SIOR  
Senior Vice President | Principal  
driggelman@lee-associates.com  
D 321.281.8507

Brock Holston  
Associate  
bholston@lee-associates.com  
D 321.281.8505

All information furnished regarding property for sale, rental or financing is from sources deemed reliable, but no warranty or representation is made to the accuracy thereof and same is submitted to errors, omissions, change of price, rental or other conditions prior to sale, lease or financing or withdrawal without notice. No liability of any kind is to be imposed on the broker herein.

5303 PATCH ROAD  
ORLANDO, FL 32822

**PROPERTY PHOTOS**



**Listing Contact:**

Derek Riggleman, SIOR  
Senior Vice President | Principal  
driggleman@lee-associates.com  
D 321.281.8507

Brock Holston  
Associate  
bholston@lee-associates.com  
D 321.281.8505

All information furnished regarding property for sale, rental or financing is from sources deemed reliable, but no warranty or representation is made to the accuracy thereof and same is submitted to errors, omissions, change of price, rental or other conditions prior to sale, lease or financing or withdrawal without notice. No liability of any kind is to be imposed on the broker herein.

5303 PATCH ROAD  
ORLANDO, FL 32822

**PROPERTY PHOTOS**



Listing Contact:

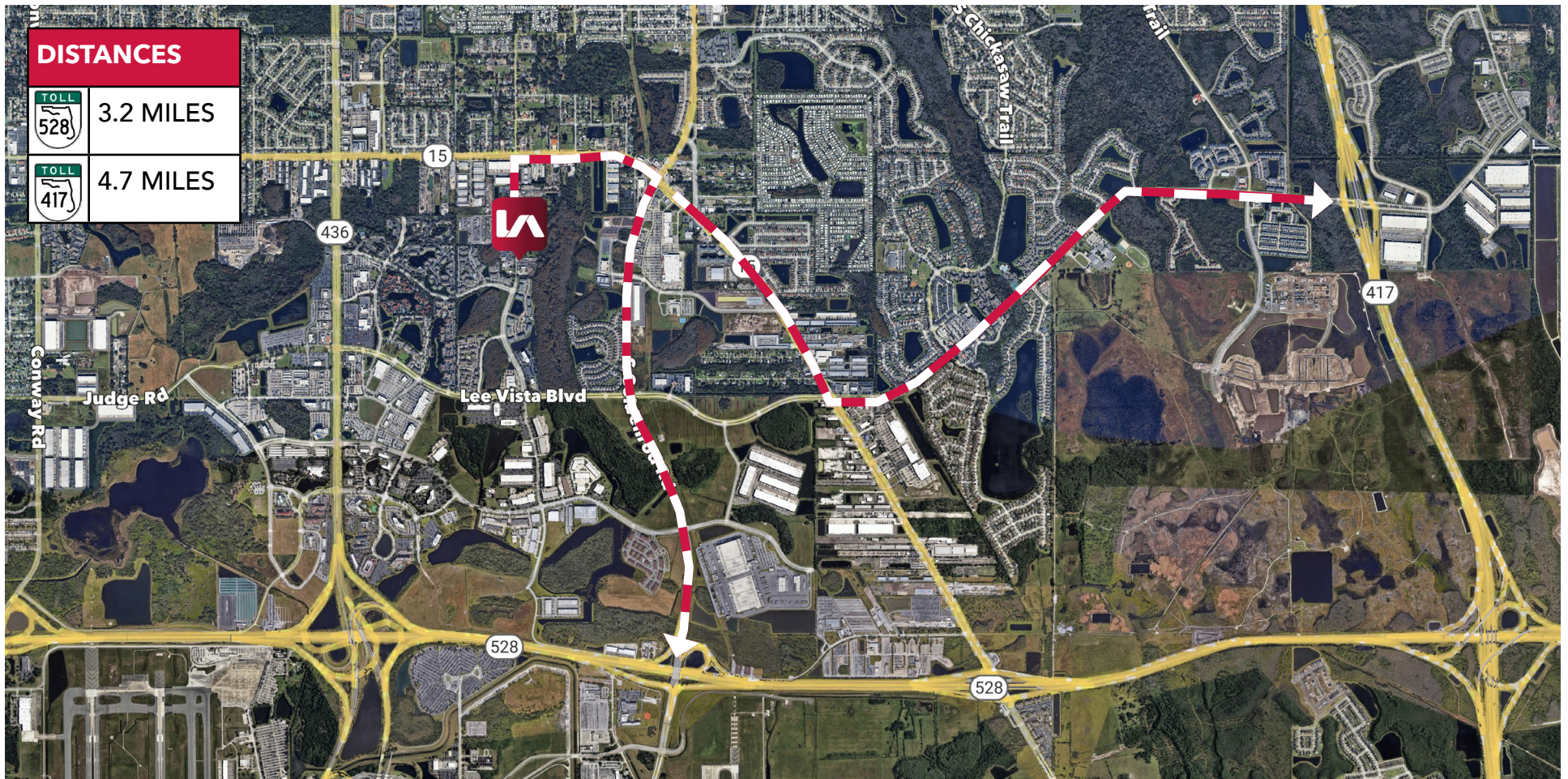
Derek Riggelman, SIOR  
Senior Vice President | Principal  
driggelman@lee-associates.com  
D 321.281.8507

Brock Holston  
Associate  
bholston@lee-associates.com  
D 321.281.8505

All information furnished regarding property for sale, rental or financing is from sources deemed reliable, but no warranty or representation is made to the accuracy thereof and same is submitted to errors, omissions, change of price, rental or other conditions prior to sale, lease or financing or withdrawal without notice. No liability of any kind is to be imposed on the broker herein.

# 5303 PATCH ROAD

ORLANDO, FL 32822



## Listing Contact:

Derek Riggleman, SIOR  
Senior Vice President | Principal  
driggleman@lee-associates.com  
D 321.281.8507

Brock Holston  
Associate  
bholston@lee-associates.com  
D 321.281.8505

All information furnished regarding property for sale, rental or financing is from sources deemed reliable, but no warranty or representation is made to the accuracy thereof and same is submitted to errors, omissions, change of price, rental or other conditions prior to sale, lease or financing or withdrawal without notice. No liability of any kind is to be imposed on the broker herein.