



Downtown New Port Richey Offices FOR LEASE

5347 Main Street, Ste. 203 & 301 New Port Richey, FL 34652

PROPERTY FEATURES

- ❖ Downtown New Port Richey Office Building
- ❖ Excellent parking with approximately 70 spaces, great signage with high visibility and easy access
- ❖ Floor plan includes waiting room, built-in reception, 2 restrooms, conference room, 2 private offices and sink stations
- ❖ 2 units available for immediate occupancy, 1,200 sq ft and 1,450 sq ft
- ❖ Large pylon sign visible on Main Street
- ❖ Located in the heart of newly revitalized Downtown New Port Richey, on the north side of Main Street near US Hwy 19

LEASE PRICE \$15 PSF NNN



**COMMERCIAL ASSET
PARTNERS**

Marc Pfleger
Commercial Associate
Cell: (727) 262-5998
Office: (727) 376-4900

mpfleger@cap-realty.com
www.cap-realty.com



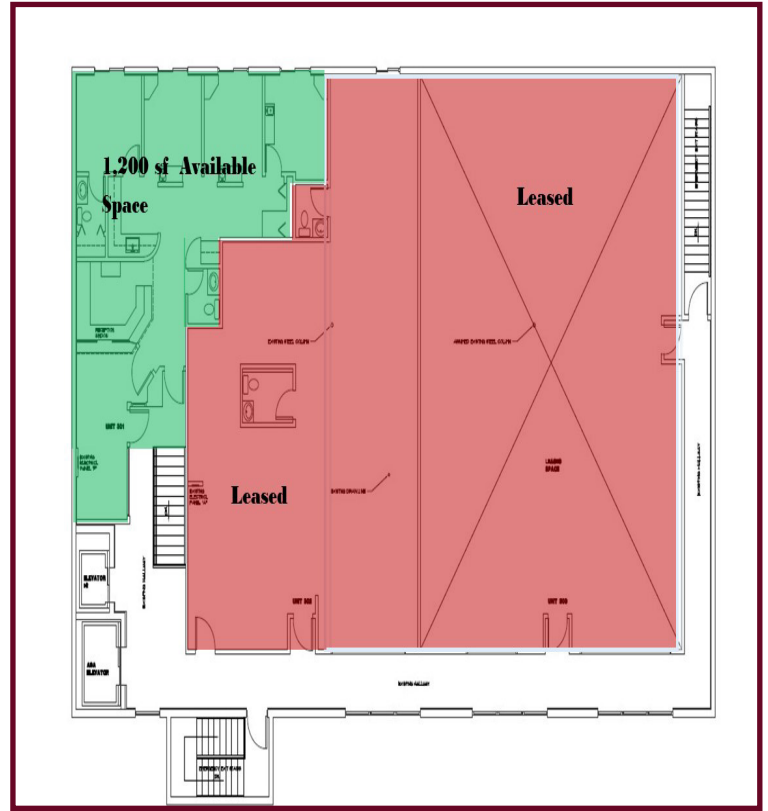
Downtown New Port Richey Offices

5347 Main Street, Ste. 203 & 301 New Port Richey, FL 34652

Suite 203



Suite 301



LOCATION MAP



PYLON SIGN

