



PROPERTY DESCRIPTION

This 53,400 SF industrial facility in Frostproof is available for lease and offers warehouse, cold storage and truck parking. Features include 7 dock-high, 3 grade level and 1 drive in with 16' to 22' clear height and can be divided into four separate units, as low as 9,200 SF. The zoning is I-1 (light industrial), signage is available on US-17, and ample parking available.

Unit 101 offers 9,200 SF of warehouse, 2 grade level doors, 16' clear height. Unit 102 offers 18,000 SF with mezzanine, breakroom, 20' clear height, and frontage on US-17. Cooler 1 offers 9,700 SF of cold storage (32 degree and up), 7 dock high doors, 1 ramp and 18' clear height. Common area available in between all spaces, with up to 1,500 SF of office available.

Strategically located in Frostproof directly on Hwy 17, the property provides easy access to major highways in Central Florida (Hwy 98, Hwy 27, and SR 60) connecting you to major destinations. Reach Polk County, Plant City and South Orlando within 45 minutes, Tampa, Orlando, Port Charlotte and Port St. Lucie within 90 minutes and Miami, Naples, Fort Myers, Gainesville and St Augustine within 180 minutes.

OFFERING SUMMARY

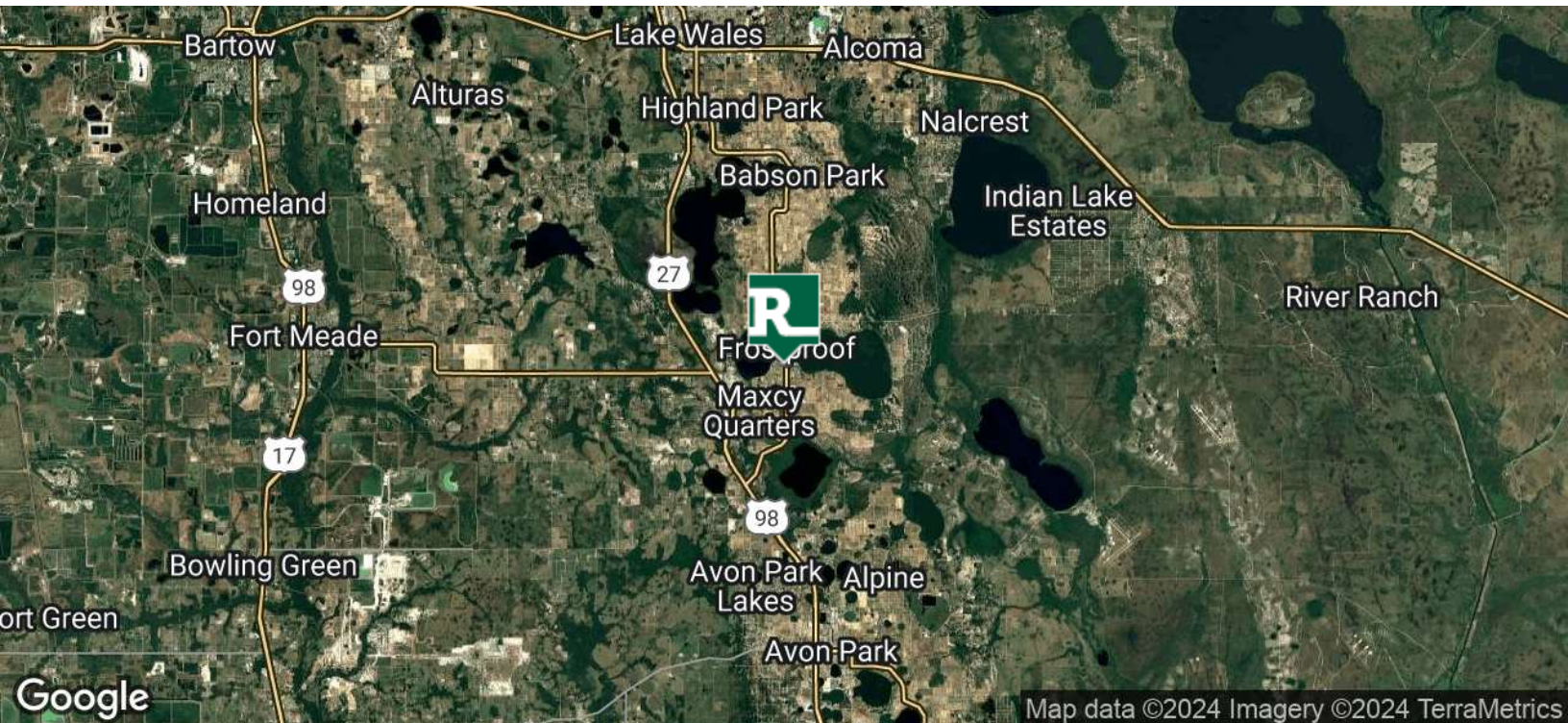
Available SF:	9,200 - 53,400 SF
Total Building Size:	53,400 SF
Lot Size:	3.08 Acres
Warehouse:	Dry & Cold Storage
Access:	Dock High & Grade
Clear Height:	16' - 22'
Zoning:	I-1 (Light Industrial)
Market:	Tampa / St. Petersburg
Submarket:	Polk County

DEMOGRAPHICS	15 MILES	30 MILES	60 MILES
Total Households	32,044	213,657	1,647,126
Total Population	81,655	554,268	4,392,100
Average HH Income	\$65,675	\$79,865	\$95,093

ALEX DELANNOY

863.250.2502
adelannoy@ruthvens.com

View Property
Website



ALEX DELANNOY

863.250.2502
adelannoy@ruthvens.com

View Property
Website



WAREHOUSE & COLD STORAGE IN FROSTPROOF
780 S SCENIC HWY, FROSTPROOF, FL 33843

Central Florida's
Warehouse Specialist

FOR LEASE



ALEX DELANNOY
863.250.2502
adelannoy@ruthvens.com

[View Property Website](#)



AVAILABLE SPACES

SUITE	SIZE	DESCRIPTION
101	9,200 SF	9,200 SF of warehouse, 2 grade level doors, 16' clear height
102	18,000 SF	18,000 SF with mezzanine, breakroom, 20' clear height, and frontage on US-17
Cooler 1	9,700 SF	9,700 SF of cold storage (32 degree and up), 7 dock high doors, 1 ramp and 18' clear height

ALEX DELANNOY
863.250.2502
adelannoy@ruthvens.com

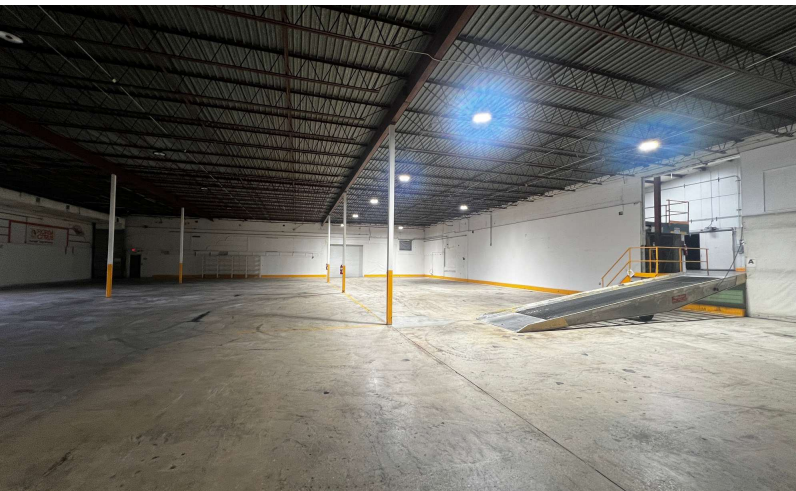
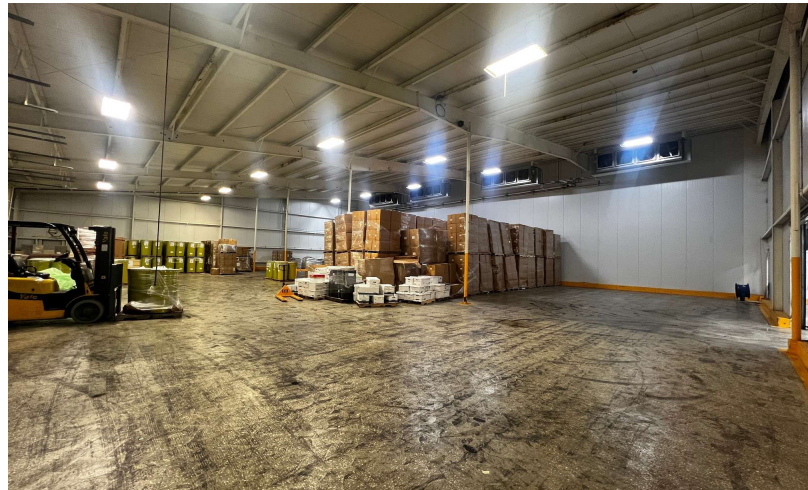
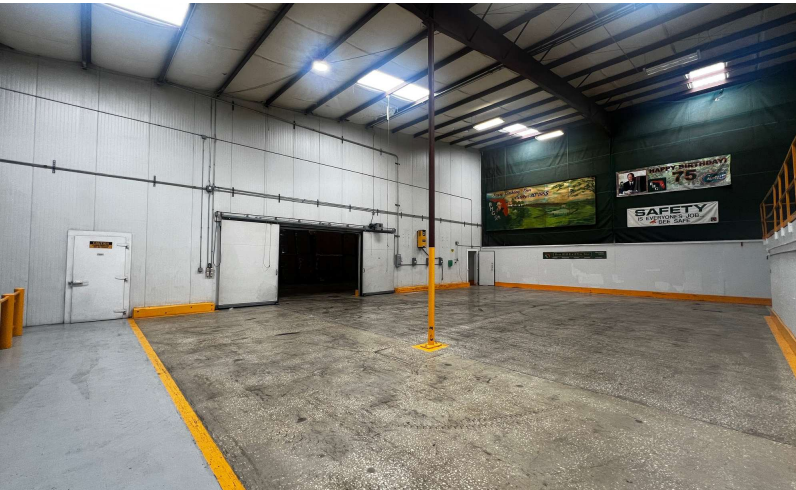
View Property Website



ALEX DELANNOY

863.250.2502
adelannoy@ruthvens.com

View Property
Website



ALEX DELANNOY
863.250.2502
adelannoy@ruthvens.com

[View Property Website](#)



POPULATION

15 MILES

30 MILES

60 MILES

Total Population	81,655	554,268	4,392,100
Average Age	46	44	41
Average Age (Male)	45	43	40
Average Age (Female)	47	45	42

HOUSEHOLDS & INCOME

15 MILES

30 MILES

60 MILES

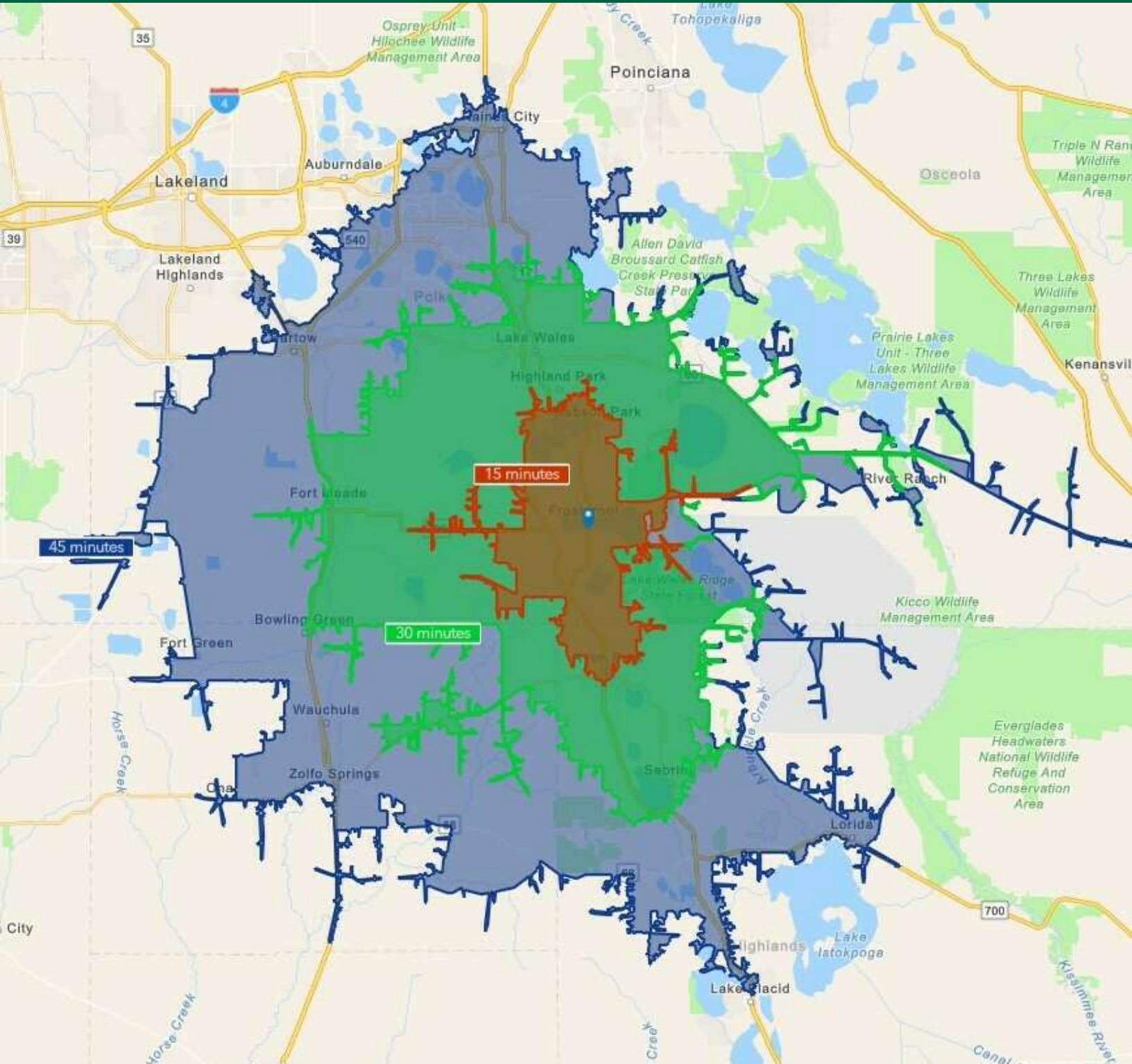
Total Households	32,044	213,657	1,647,126
# of Persons per HH	2.5	2.6	2.7
Average HH Income	\$65,675	\$79,865	\$95,093
Average House Value	\$229,400	\$272,309	\$361,587

Demographics data derived from AlphaMap

ALEX DELANNOY

863.250.2502
adelannoy@ruthvens.com

View Property
Website



ALEX DELANNOY
863.250.2502
adelannoy@ruthvens.com

View Property
Website



ALEX DELANNOY

Vice President of Brokerage

adelannoy@ruthvens.com

Direct: **863.686.3173** | Cell: **863.250.2502**

PROFESSIONAL BACKGROUND

Alex Delannoy was born and raised in Toulouse, France, with a strong drive and burning desire to discover new experiences and knowledge. His travels through Europe and throughout the world have created a great passion for the diversity and culture he experienced.

Alex became a professional paintball player and came to the United States in 2010 when he joined one of the top teams in the league in the Tampa, FL area. After spending a few years with the team, his entrepreneurial spirit drove him to start his own business in Winter Haven, FL called Action Paintball & Laser Tag. The facility included a retail pro-shop, more than 30 trained employees, room for five different onsite activities, and became a thriving business with more than 35,000 players over the years. The business was purchased by an investor in early 2017.

He joined The Ruthvens in 2022 and leads the charge on our brokerage properties and services. He made a successful name for himself as a senior advisor at KW Commercial, where he built a book of commercial real estate business and managed brokerage assets in the Central Florida area for five years. Alex is known for providing results by creating opportunities through analyzing a problem and finding a durable solution by using all resources available. Alex is always looking at new ways to add value and skills, and his experience in his craft and in the community is a big reason he's a trusted resource to head up the brokerage properties division at The Ruthvens.

EDUCATION

FGCAR Commercial Real Estate University Courses
Lipsey School of Real Estate - Commercial MICP Designation

MEMBERSHIPS

Certified Commercial Investment Member Institute (CCIM), Candidate
Society of Industrial and Office REALTORS (SIOR), Member Associate
Manufacturing & Supply Chain of Mid Florida
NAIOP Member of Central Florida
National Realtor Association
Lakeland Realtor Association

ALEX DELANNOY

863.250.2502
adelannoy@ruthvens.com

View Property
Website