

For Lease  
±1,637-3,066 SF  
Office Space



# Commerce Pointe Silver

1818 S Australian Avenue  
West Palm Beach, FL 33409

## Property Features

- Fantastic leasing opportunity near Downtown West Palm Beach
- Four-story office building with a beautiful atrium lobby and move-in ready suites
- Excellent access to arterial roads
- Central Palm Beach County location with great airport access and minutes from Downtown West Palm Beach
- Near popular amenities like The Square, Grandview Market, Town of Palm Beach, the Governmental Center, and more

## Key Features:



**Great location**  
adjacent to I-95



**Near the best of**  
the Palm Beaches



**Lushly landscaped**  
with pond & lake views



**Move-in ready office**  
suites available

## For More Information:

**Jason L. Sundook, SIOR**

Principal | [jsundook@mhcreal.com](mailto:jsundook@mhcreal.com)

**Patrick Almand**, Associate

C: 443 370 8655 | [palmand@mhcreal.com](mailto:palmand@mhcreal.com)

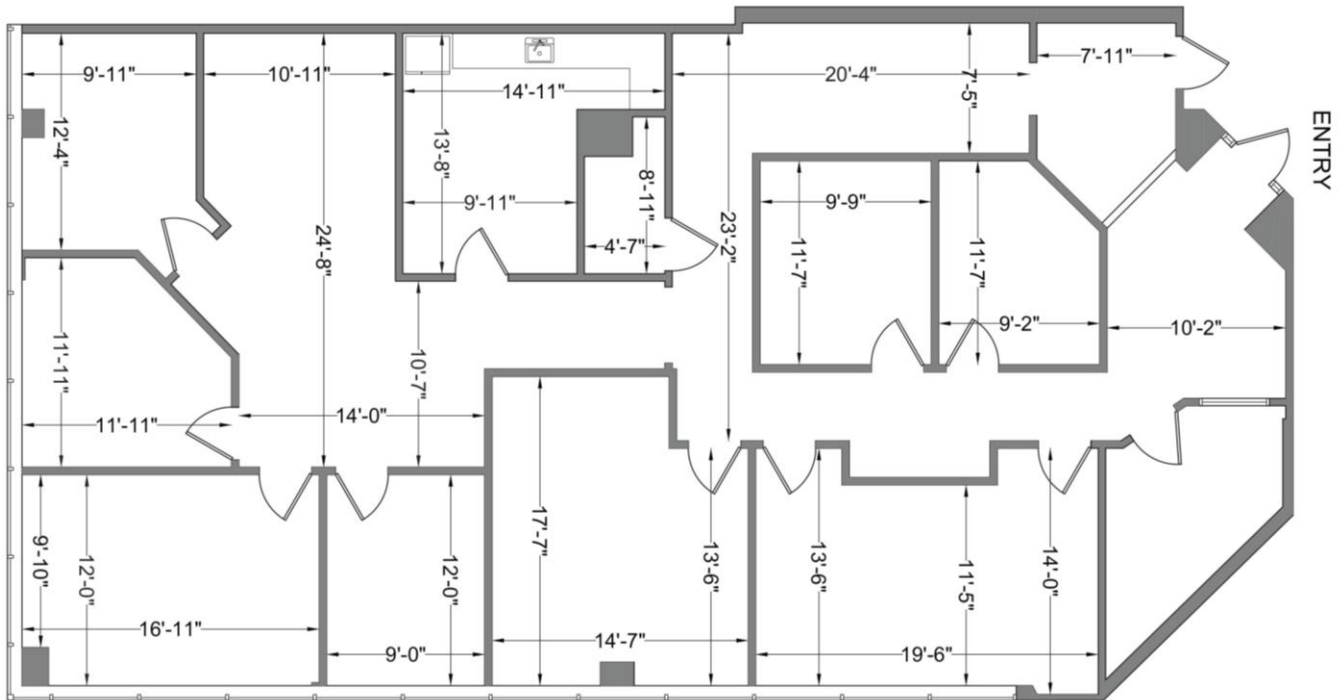


# FOR LEASE: COMMERCE POINTE SILVER, WEST PALM BEACH

## Modern & Move-In Ready Office Space

**Suite 102** 3,066 SF

Modern and move-in ready, ground-floor office space with multiple offices, a conference room, and kitchen/break area.



\*Not to scale. Subject to error.



NO WARRANTY OR REPRESENTATION, EXPRESS OR IMPLIED, IS MADE AS TO THE ACCURACY OF THE INFORMATION CONTAINED HEREIN, AND THE SAME IS SUBMITTED SUBJECT TO ERRORS, OMISSIONS, CHANGE OF PRICE, OR WITHDRAWAL WITHOUT NOTICE.



561 471 8000



1601 Forum Place, Suite 700  
West Palm Beach, FL 33401



[www.mhcreal.com](http://www.mhcreal.com)

# FOR LEASE: COMMERCE POINTE SILVER, WEST PALM BEACH

## Move-In Ready Office Space Near Downtown & I-95



## Your Professional Waterfront Oasis IN AN UNBEATABLE WEST PALM BEACH LOCATION

Welcome to Commerce Pointe Silver, a prime office building centrally located in West Palm Beach. The property offers stunning water views, meticulously maintained common areas, and a beautiful atrium lobby. Commuting is a breeze with easy access to I-95, Okeechobee Blvd., Brightline, and commuter rail.

Featuring an amazing location near the best of the Palm Beaches, move-in ready offices, and on-site property management, Commerce Pointe Silver offers high-quality workspace tailored for Palm Beach County professionals.

For More Information:

**Jason L. Sundook, SIOR**

Principal | [jsundook@mhcreal.com](mailto:jsundook@mhcreal.com)

**Patrick Almand, Associate**

C: 443 370 8655 | [palmand@mhcreal.com](mailto:palmand@mhcreal.com)

**TAKE ADVANTAGE OF THIS STRATEGIC  
LOCATION & MOVE-IN READY SUITES**

**561 471 8000**

NO WARRANTY OR REPRESENTATION, EXPRESS OR IMPLIED, IS MADE AS TO THE ACCURACY OF THE INFORMATION CONTAINED HEREIN, AND THE SAME IS SUBMITTED SUBJECT TO ERRORS, OMISSIONS, CHANGE OF PRICE, OR WITHDRAWAL WITHOUT NOTICE.



561 471 8000



1601 Forum Place, Suite 700  
West Palm Beach, FL 33401



[www.mhcreal.com](http://www.mhcreal.com)