

For Lease

Office Space with Parking

1,194 - 6,705 SF | \$28.75 SF



605 East Robinson Street

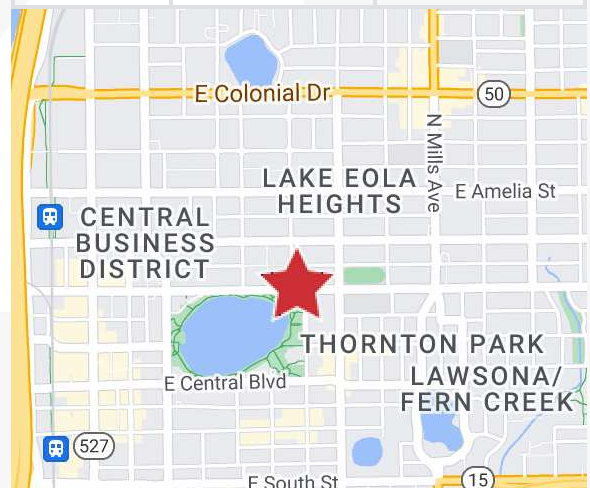
Orlando, Florida 32801

Property Highlights

- 83,139± SF, 7-story office building
- Across the street from Lake Eola Park
- Spaces are already built out
- No pass-through expenses
- Free parking available
- On-site management
- Visitors parking area
- No hassles or hidden fees!

AVAILABLE SPACES

Space	Lease Rate	Size (SF)
Suite 135	\$28.75 SF/yr	1,969
Suite 210	\$28.75 SF/yr	1,716 - 6,705
Suite 430	\$28.75 SF/yr	1,198
Suite 520	\$28.75 SF/yr	1,194



Lease Rate: \$28.75 SF Full Service

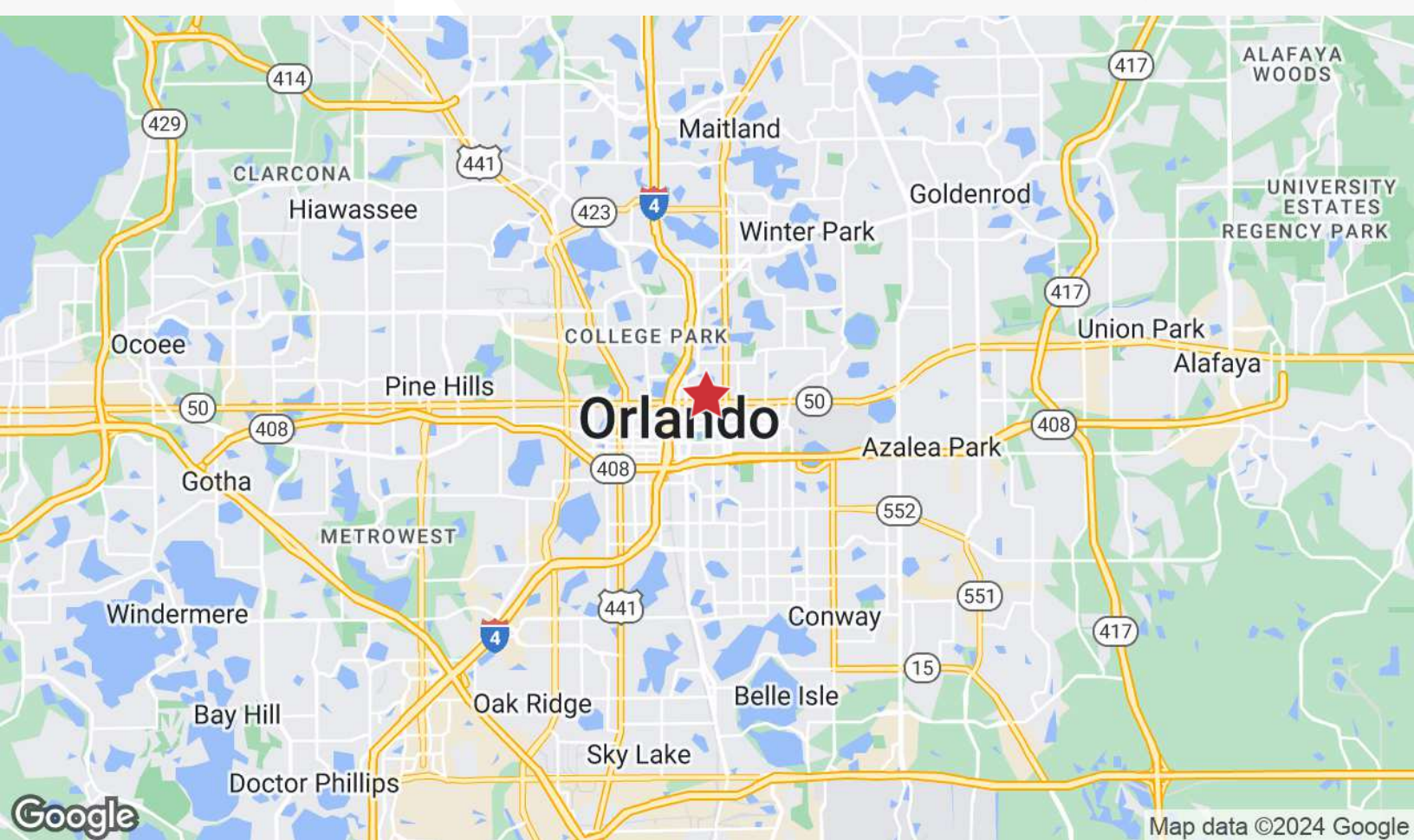
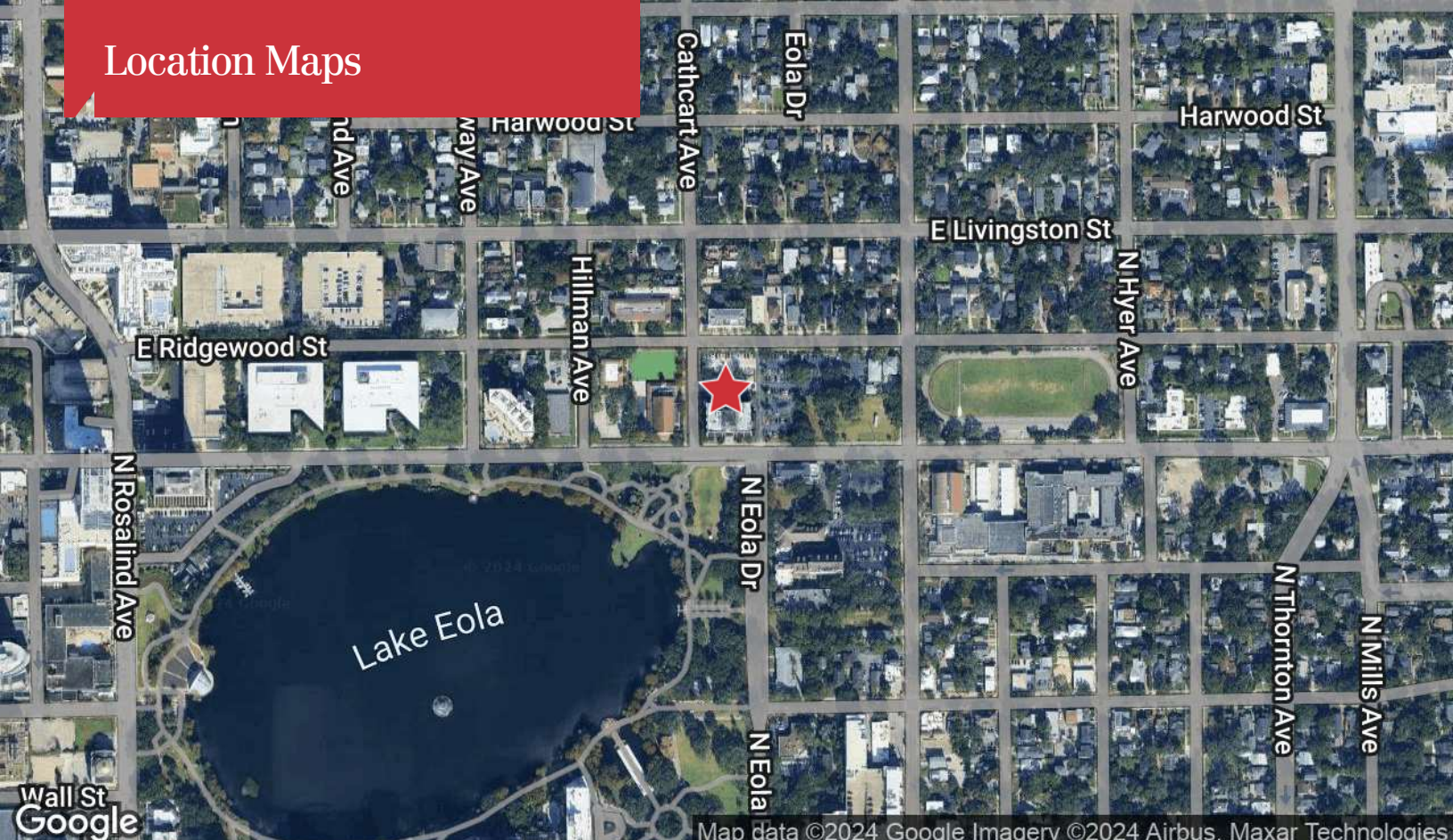
For more information

Jeffrey Bloom, CCIM

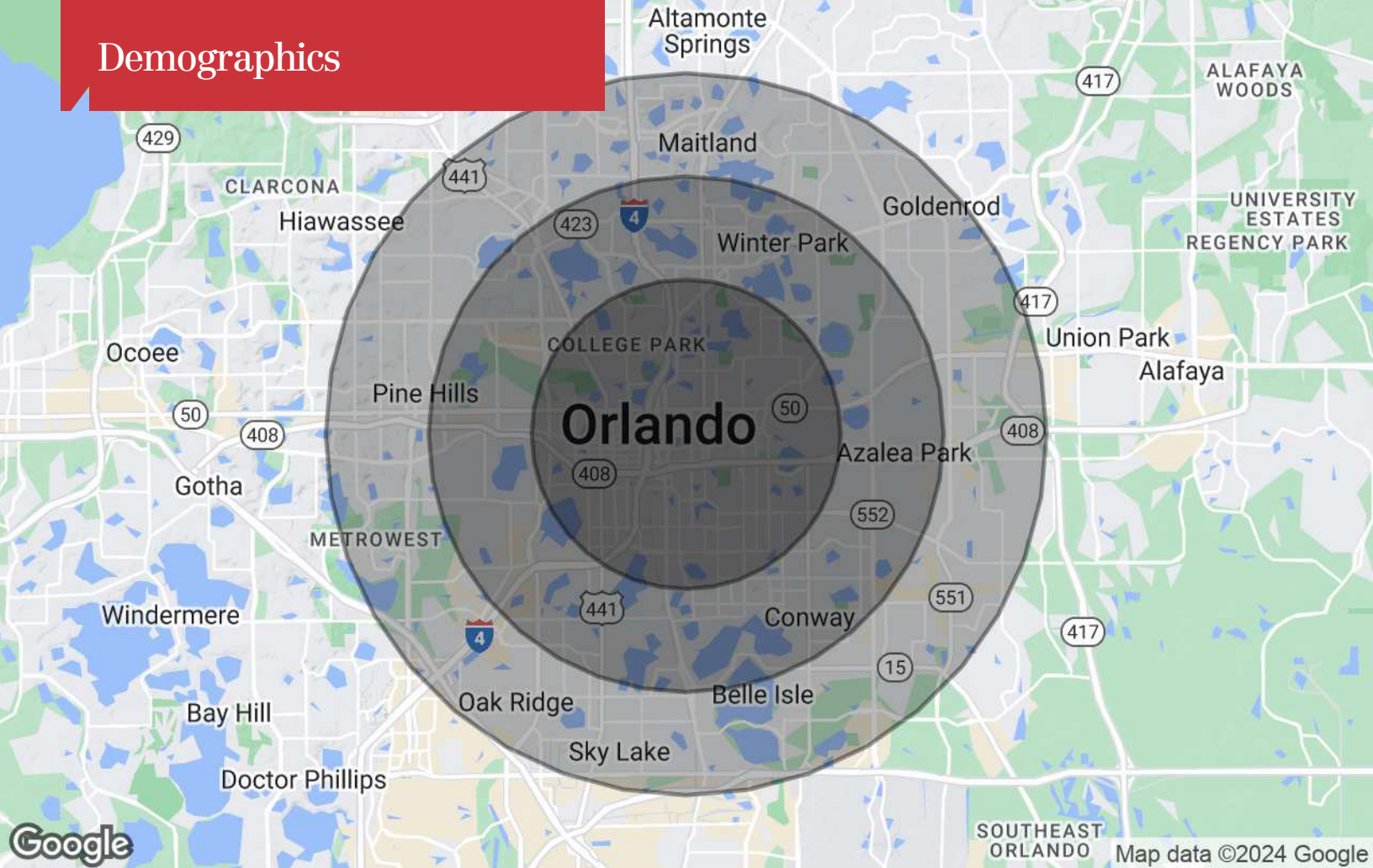
O: 407 949 0709

jbloom@realvest.com

Location Maps



Demographics



Population

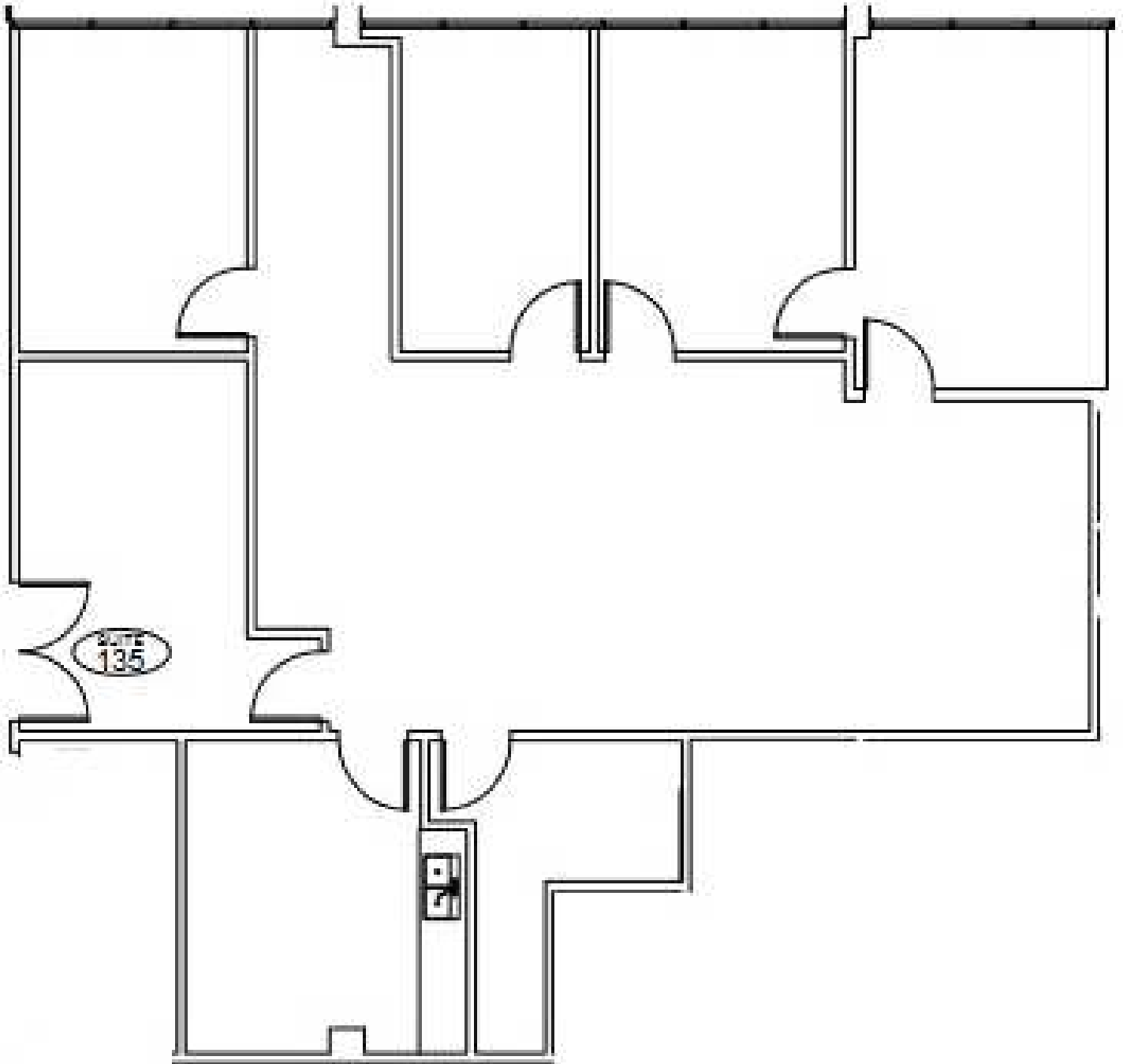
	3 Miles	5 Miles	7 Miles
TOTAL POPULATION	97,710	280,846	608,935
MEDIAN AGE	38.6	38.0	36.4
MEDIAN AGE (MALE)	38.2	36.6	35.1
MEDIAN AGE (FEMALE)	39.2	39.6	38.1

Households & Income

	3 Miles	5 Miles	7 Miles
TOTAL HOUSEHOLDS	52,021	132,370	262,833
# OF PERSONS PER HH	1.9	2.1	2.3
AVERAGE HH INCOME	\$87,187	\$73,394	\$65,656
AVERAGE HOUSE VALUE	\$289,697	\$252,220	\$209,573

* Demographic data derived from 2020 ACS - US Census

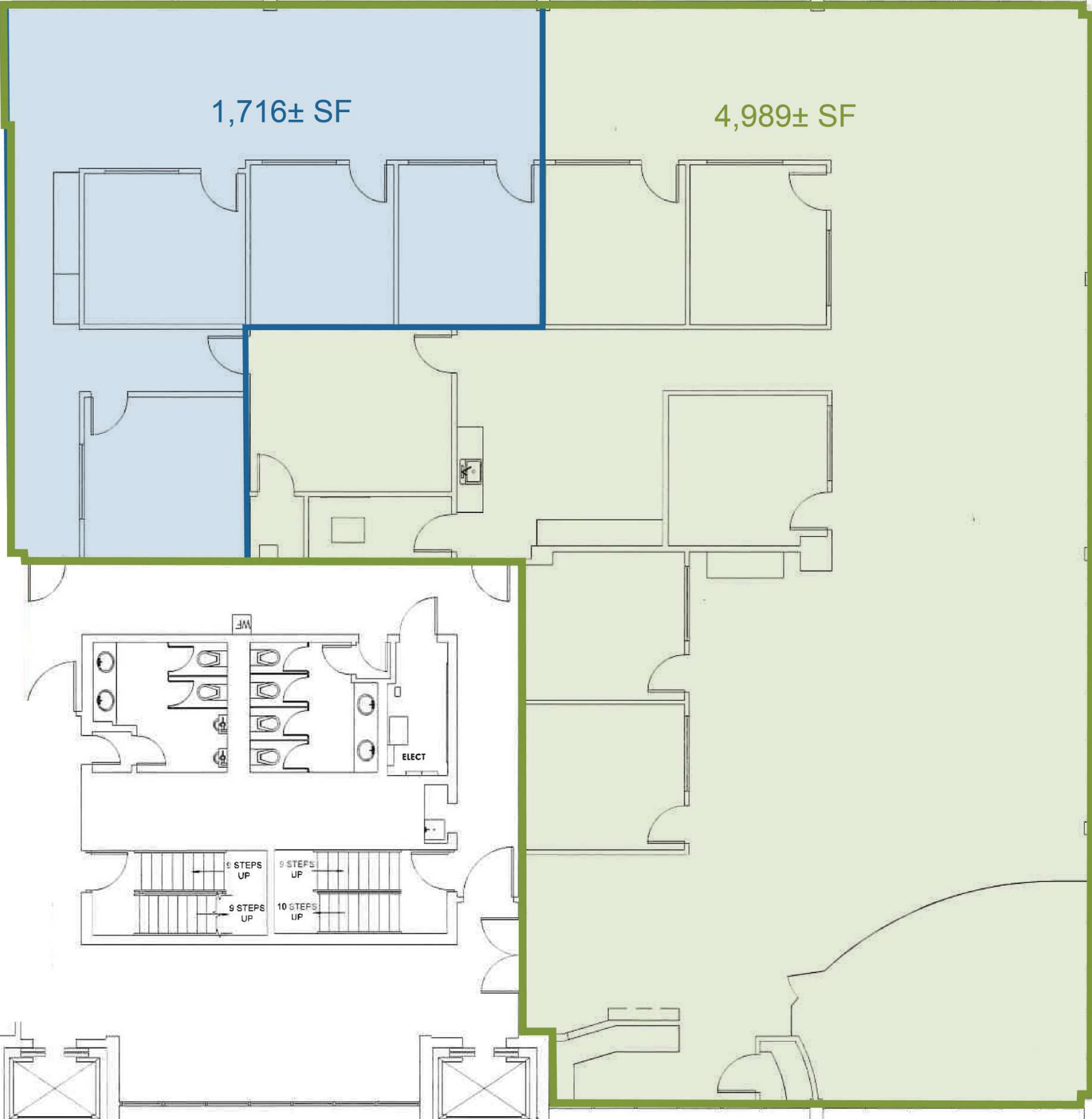
Suite 135 - 1,969± SF

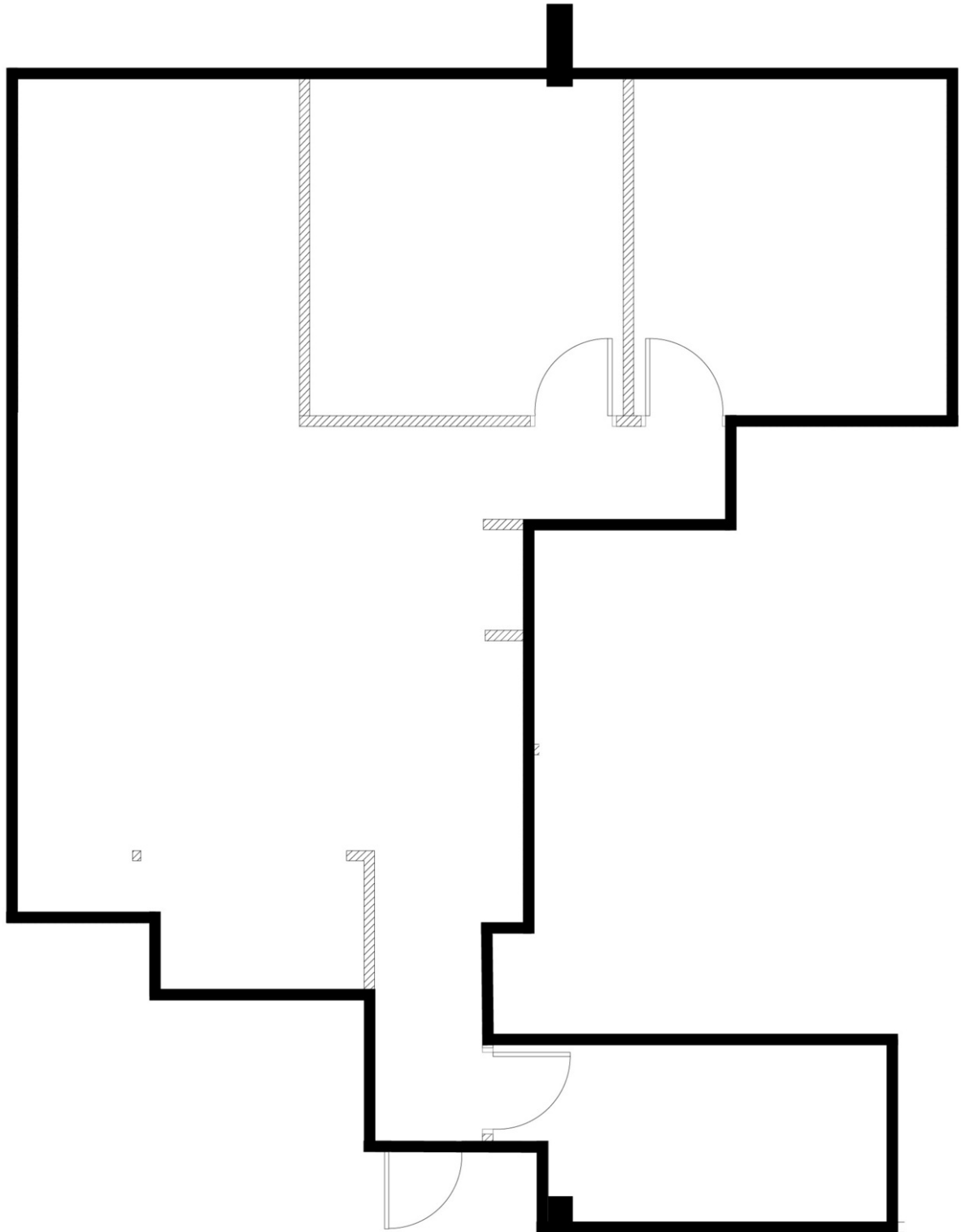


Suite 210 - 6,705± SF - Can Be Divided

1,716± SF

4,989± SF





Suite 520 - 1,194± SF

