

FOR LEASE

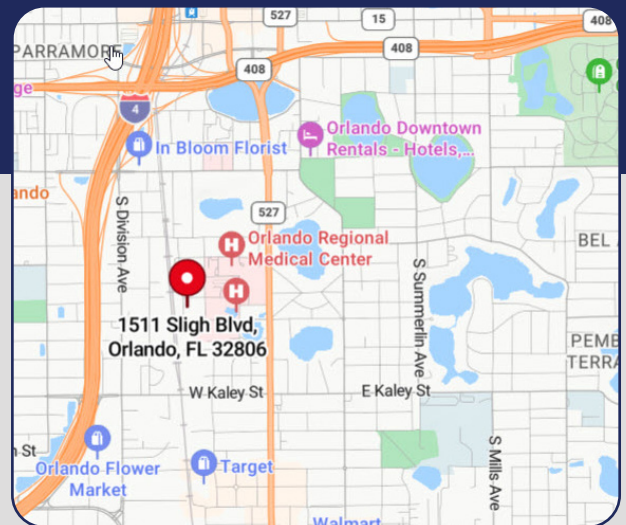


## MEDICAL OFFICE SPACE

1511 Sligh Boulevard, Orlando, FL 32806

### 2,500 SF AVAILABLE

- > 2,500 SF available in Suite B
- > Ideal location for medical office
- > Within walking distance to Orlando Regional Medical Center and Winnie Palmer Hospital
- > Move-in condition
- > Excellent parking at 12 spaces plus additional on street
- > Street signage
- > Expenses estimated at \$4.17/SF
- > **\$30.00/SF, NNN**



**Bill Bywater, CCIM**

D 407.206.5736

O 407.206.7300

bill@bywater.com



1209 Edgewater Drive

Suite 100

Orlando, FL 32804

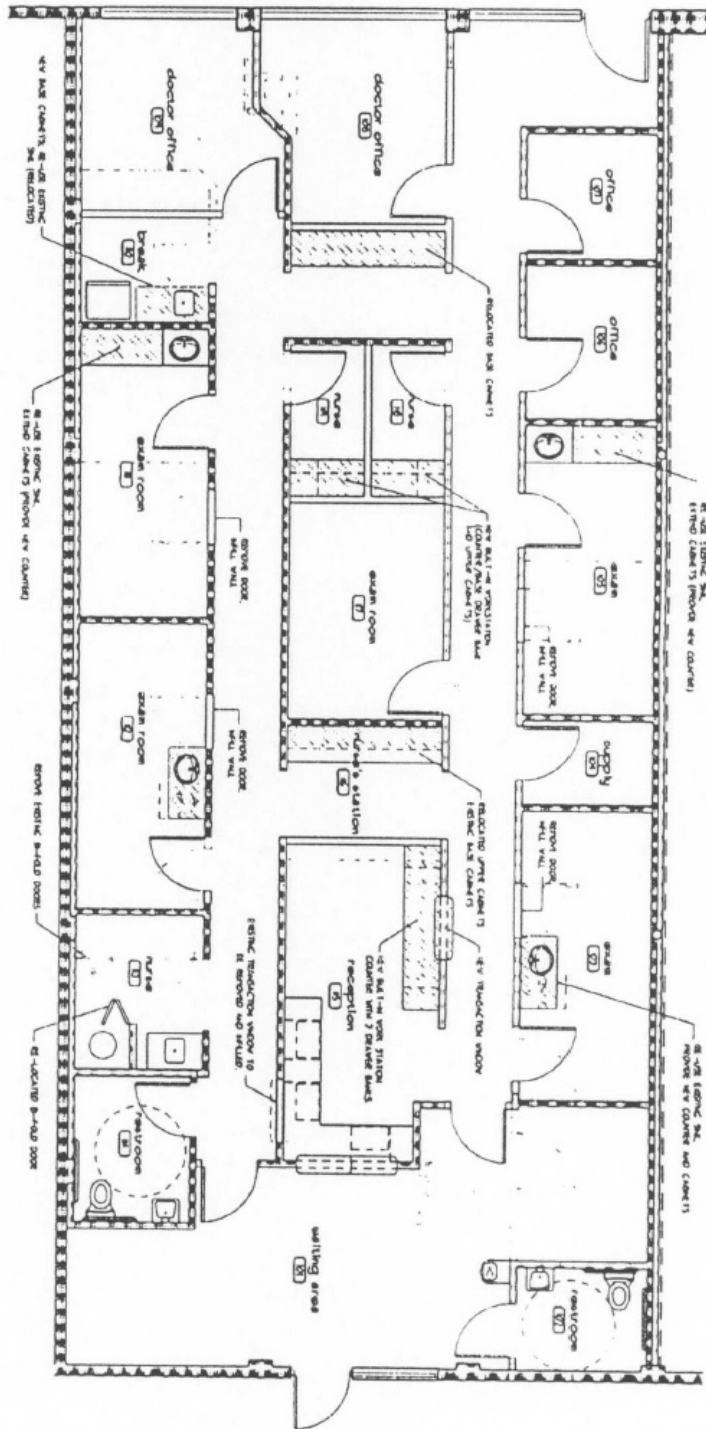
407.206.7300 Main

www.bywater.com

# MEDICAL OFFICE SPACE

1511 Sligh Boulevard, Orlando, FL 32806

## FLOORPLAN



1209 Edgewater Drive, Suite 100 | Orlando, FL 32804 | 407.206.7300 | [www.bywater.com](http://www.bywater.com)

The information contained herein was obtained from sources deemed reliable and is assumed to be correct. It is not guaranteed by The Bywater Company.



# MEDICAL OFFICE SPACE

1511 Sligh Boulevard, Orlando, FL 32806



1209 Edgewater Drive, Suite 100 | Orlando, FL 32804 | 407.206.7300 | [www.bywater.com](http://www.bywater.com)

The information contained herein was obtained from sources deemed reliable and is assumed to be correct. It is not guaranteed by The Bywater Company.