

Turnkey Distillery & Production Facility

3250 St Lucie Boulevard
Fort Pierce, FL 34946

FOR SALE:

\$5,900,000

(\$4,200,000 Real Estate / \$1,700,000 Equipment)

FOR LEASE:

\$35,000/Month NNN

Nikolaus M. Schroth, CCIM

Broker Associate | Principal

+1 772 286 6292

nikschrth@naisouthcoast.com

J. Jeffery Allman, Jr.

Sales Associate

+1 772 286-6292 c +1 772 283 1555

jeff@naisouthcoast.com

James McKinney

Sales Associate

+1 772 349 3414

jamesmckinney@naisouthcoast.com

NAISouthcoast



Offering Summary

Sale Price: \$5,900,000
(\$4,200,000 Real Estate/\$1,700,000 Equipment)

Lease Rate: \$35,000/Month NNN

Description

Available for sale or lease, a turnkey Distillery and Production facility located next door to the Treasure Coast International Airport in St. Lucie County, FL. The building is a 24,228 square foot building built in 2007. Constructed of tilt wall panels, with a flat built up roof and impact glass, this building is a modern constructed, well built foundation for this operation. There is a 3,428 square foot first floor showroom area with an elevator accessed 3,428 square foot second floor and two 800 square foot mezzanine areas with a significant loading capacity.

The site features ample parking, a shared dual-loading ramp, fenced storage and good frontage on St. Lucie Boulevard, a main east west connector road slated to connect to I-95 and Florida's Turnpike in the future.

Building Features

Size: 24,228 Square Feet

Building Height: 22' clear height

Overhead Doors: 7 14'x 12'

Glass: Impact Storefront Glass

Power: 600 Amp Tenant Service and 100 Amp House Service

Site Area: 4.57 Acres (Shared with 3200 Building under POA ownership)

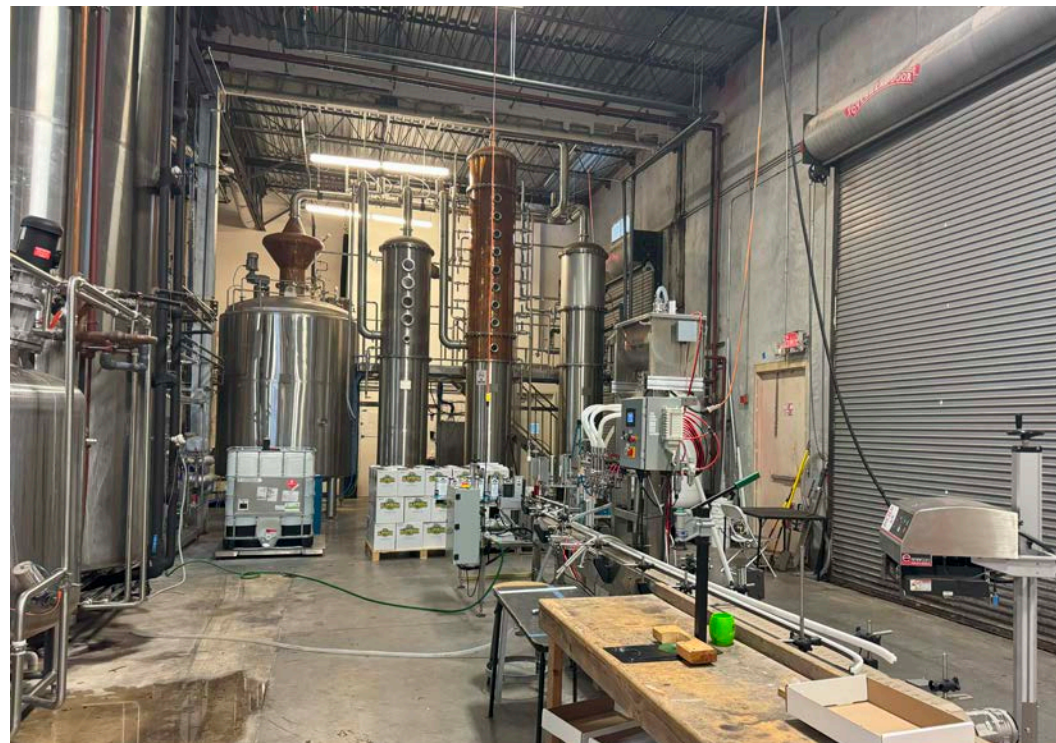
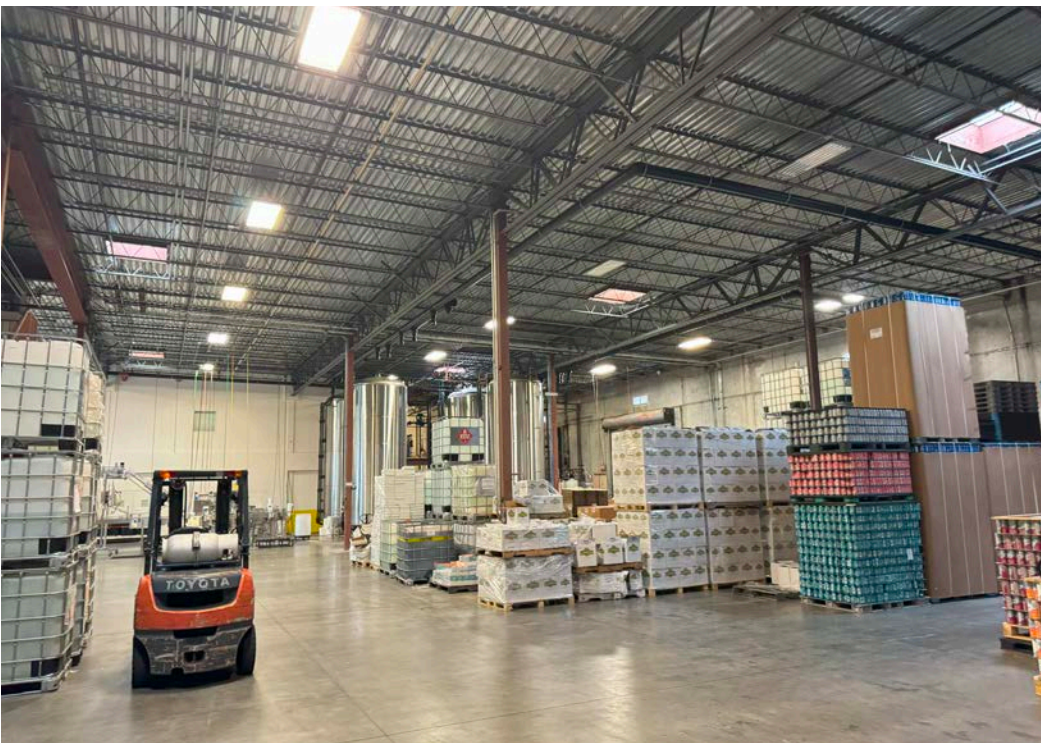


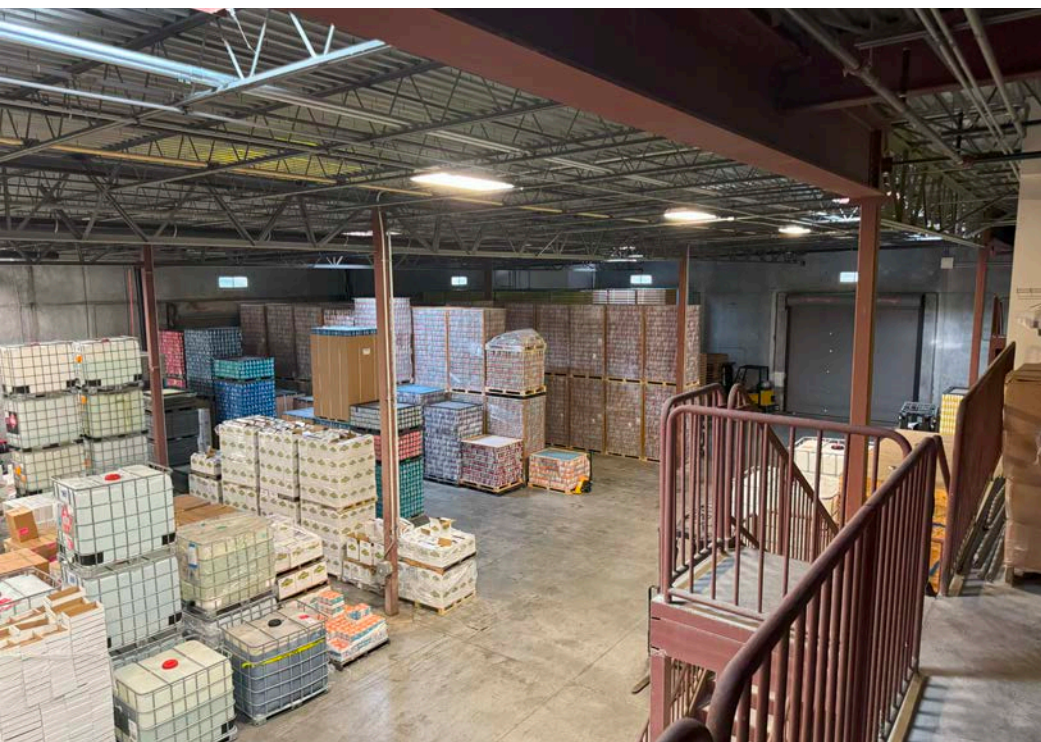
Distillery

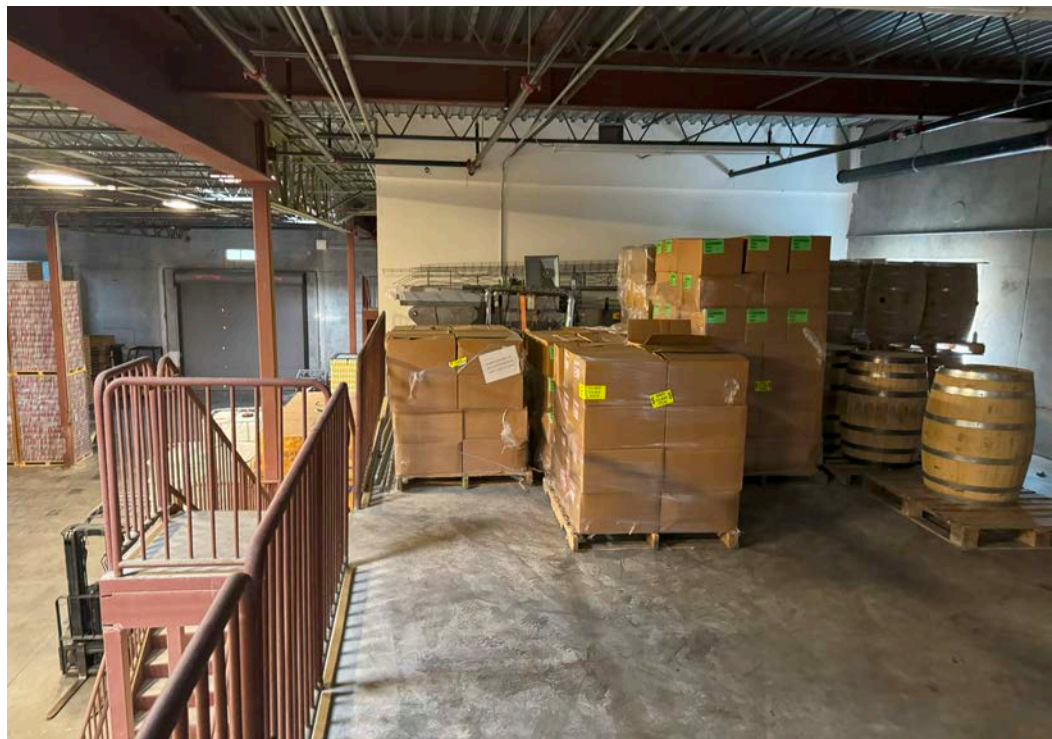
The facility was constructed to facilitate regional distribution for a local distillery. This offering is being made as the current operators business model has changed and is focused on small batch production in its retail outlets. The facility includes a RTD (Ready to Drink Cocktail) plant with canning line and all associated controls.

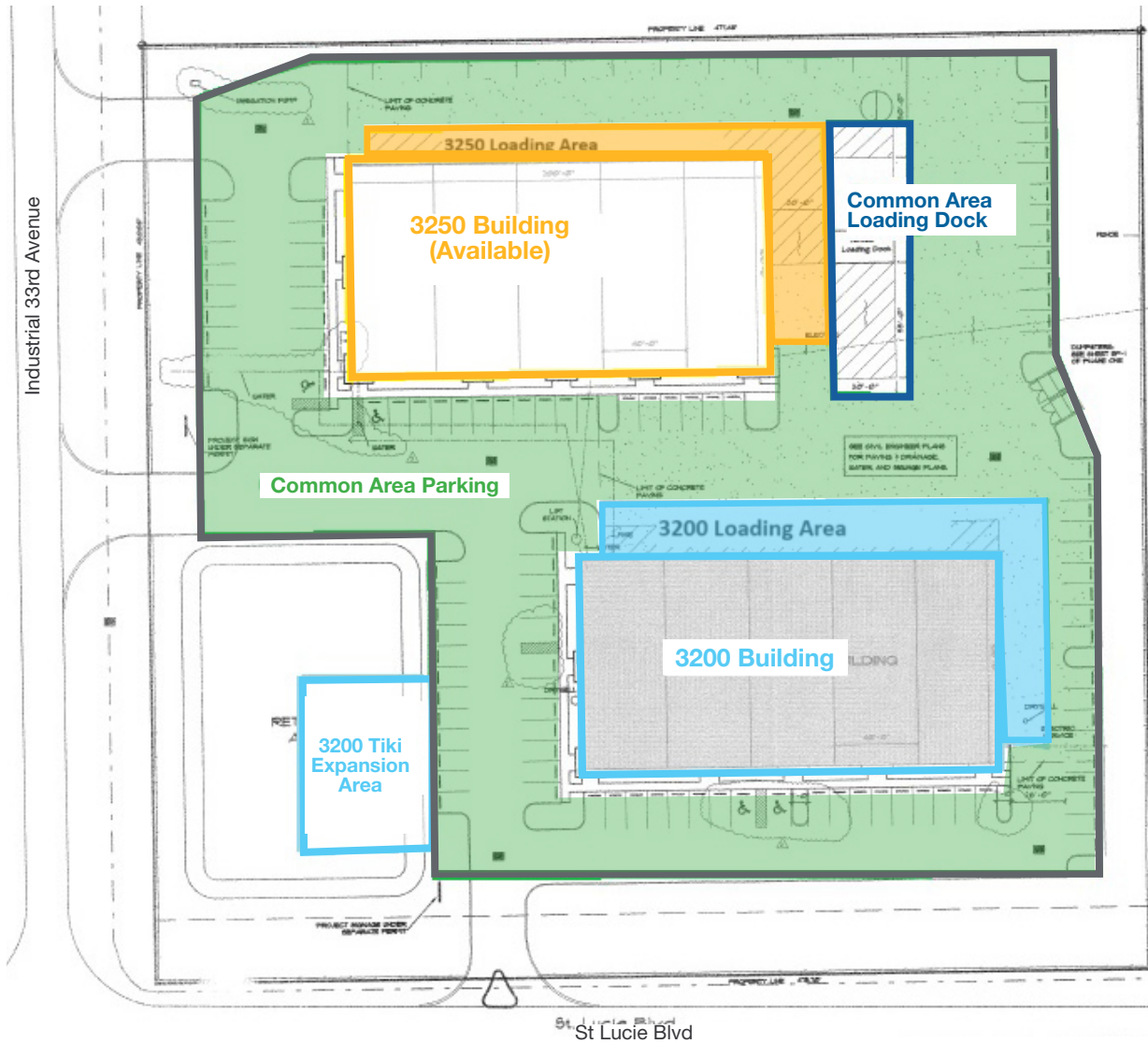
Distillery Features

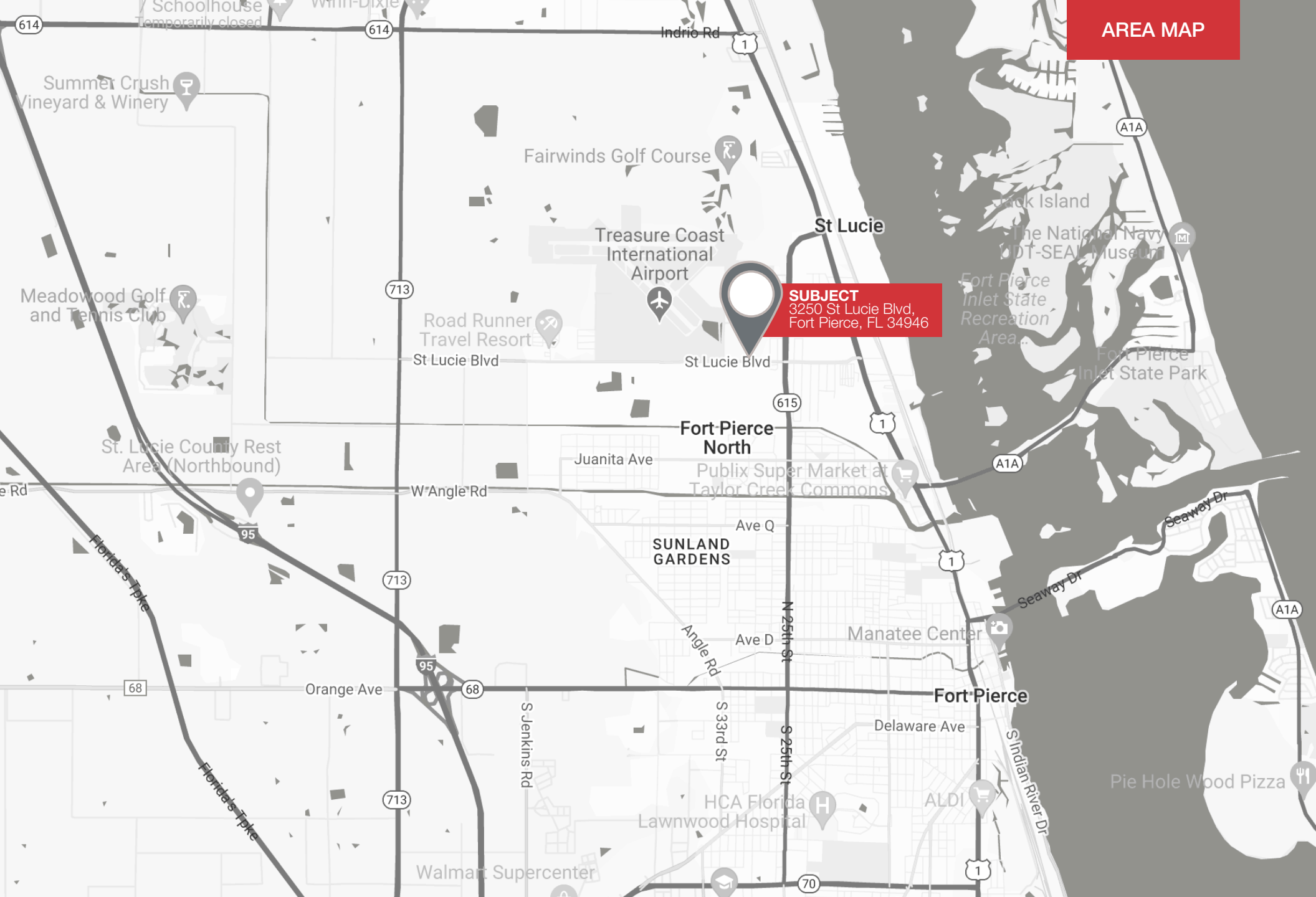
- 1,600 Gallon Still with gin basket
- 8 Plate rectifying column and dephlegmator
- Automated touch panel batch creation
- 160 Barrel DAW tank
- 160 Barrel Blending Tank
- 10 Barrel Mixing Tank
- 160 barrel packaging tank
- 100 Can Per Minute 12oz sleek canning line with date coding and level rejection
- Nitro dosing capabilities

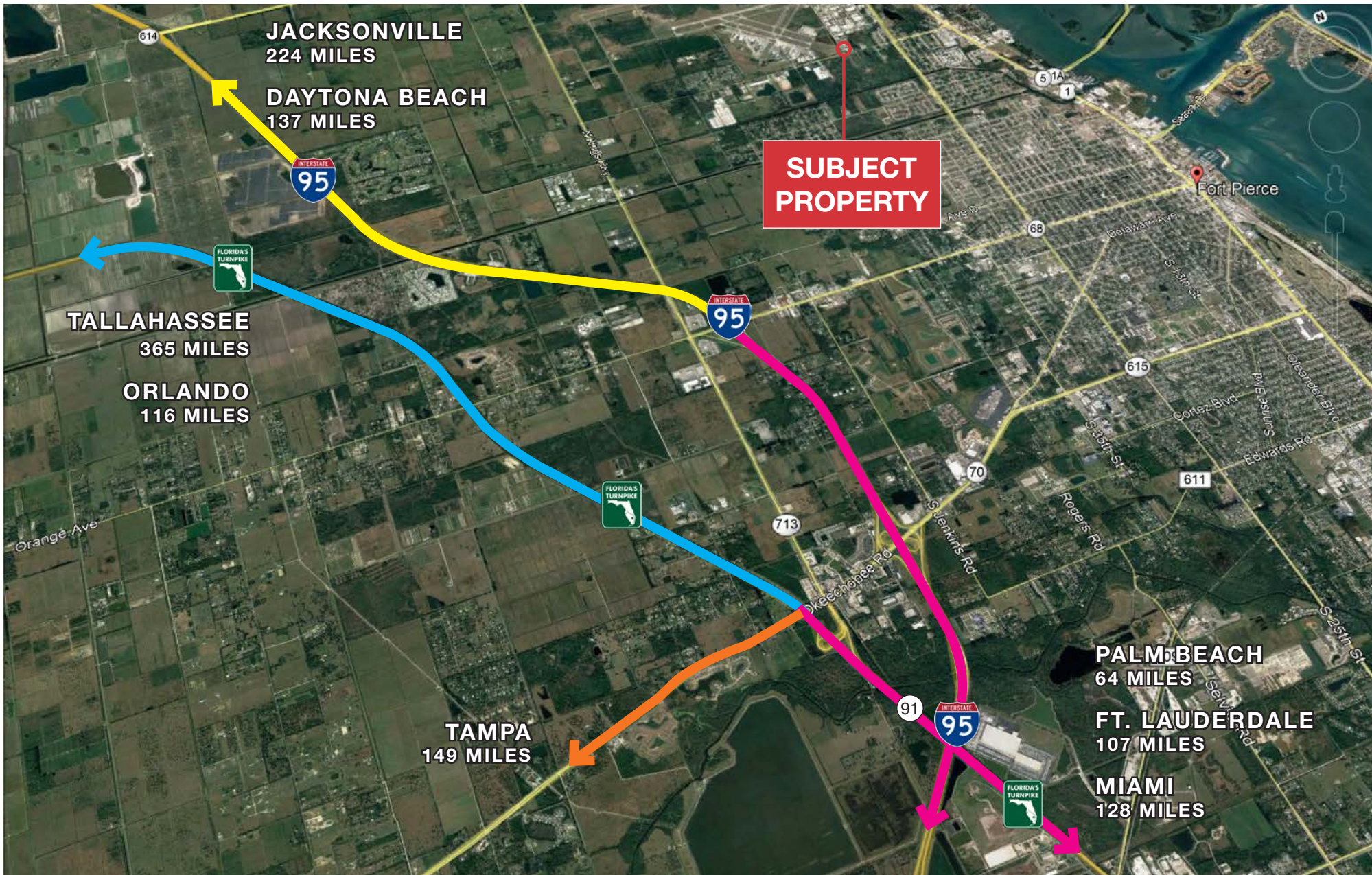








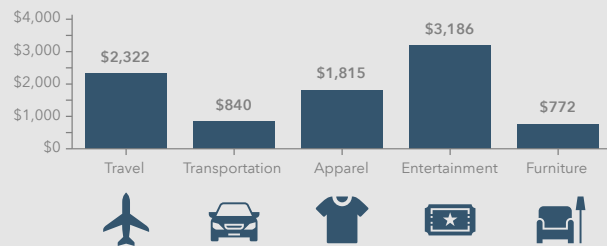




3250 Saint Lucie Blvd, Fort Pierce, Florida, 34946 3
Ring: 10 mile radius



KEY SPENDING FACTS



Source: This infographic contains data provided by Esri (2024, 2029), Esri-Data Axle (2024), Esri-U.S. BLS (2024).

© 2024 Esri
Spending facts are average annual dollars per household

Population

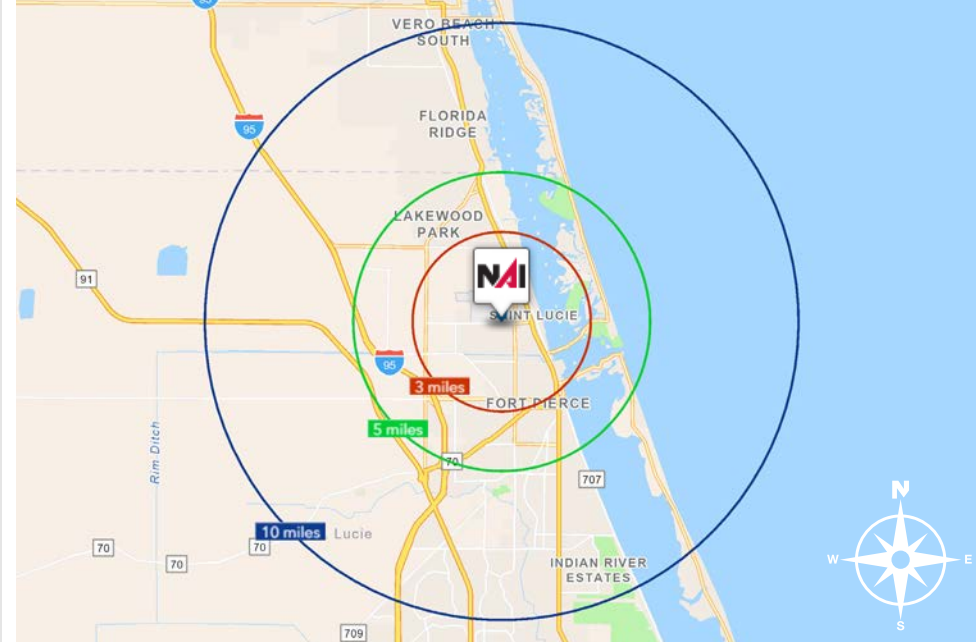
3 Mile:	23,892
5 Mile:	67,239
10 Mile:	173,431

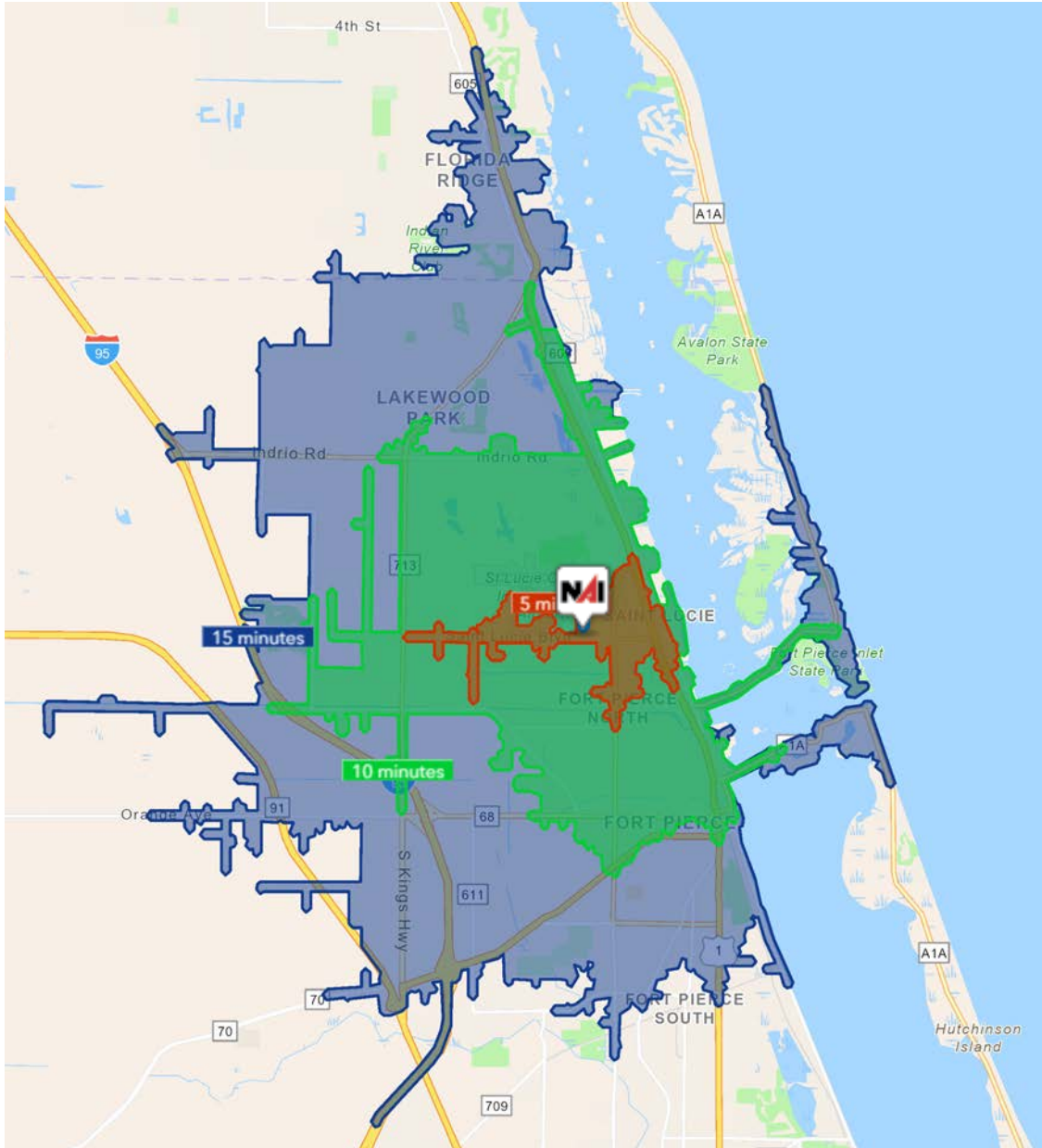
Average Household Income

3 Mile:	\$45,373
5 Mile:	\$67,560
10 Mile:	\$87,174

Median Age

3 Mile:	36.9
5 Mile:	42.2
10 Mile:	46.2





5 Minutes	10 Minutes	15 Minutes
2,012 2010 Population	22,876 2010 Population	65,881 2010 Population
2,248 2024 Population	25,639 2024 Population	76,096 2024 Population
11.7% 2010-2024 Population Growth	12.07% 2010-2024 Population Growth	15.5% 2010-2024 Population Growth
(0.16)% 2024-2029 (Annual) Est. Population Growth	0.02% 2024-2029 (Annual) Est. Population Growth	0.46% 2024-2029 (Annual) Est. Population Growth
43.0 2024 Median Age	37.4 2024 Median Age	42.5 2024 Median Age
\$45,346 Average Household Income	\$46,799 Average Household Income	\$69,258 Average Household Income
15.9% Percentage with Associates Degree or Better	17.8% Percentage with Associates Degree or Better	31.3% Percentage with Associates Degree or Better
43.1% Percentage in White Collar Profession	44.4% Percentage in White Collar Profession	51.5% Percentage in White Collar Profession

St Lucie County

Economic Expansion, 2019 - Present

Calendar Year	Company	Industry	Location	Project Scope	Jobs	Jobs	Jobs	Value	
2019	Dirty Deeds Cleaning Service	Small Business	St. Lucie County	EXPANSION	31	44	26	6,000	
	Drexel Metals	Manufacturing	Port St. Lucie	NEW	25	0	7	25,000	
	PlusOneAir	Aviation	St. Lucie County	NEW	25	0	38	25,000	
	Pursuit Boats II	Marine	St. Lucie County	EXPANSION	200	404	652	236,000	
	Ross Mixing	Manufacturing	Port St. Lucie	EXPANSION	16	40	46	55,000	
2020	California Closets	Warehouse/Distribution	St. Lucie County	EXPANSION	10	28	48	10,000	
	Citrus Extracts	Manufacturing	Fort Pierce	NEW	40	35	25	75ft. Tower	
	FedEx Ground	Warehouse/Distribution	Port St. Lucie	NEW	490	0	469	245,000	
	Indian River Spirits	Manufacturing	St. Lucie County	NEW	5	0	0	20,000	
	Interstate Crossroads Business Center by The Silverman Group	Industrial Development	Fort Pierce	NEW	755*	0	0	1,133,000	
	Legacy Park at Tradition by Sansone Group	Industrial Development	Port St. Lucie	NEW	2,146	0	‡	3,220,000	
	Total Truck Parts	Warehouse/Distribution	Port St. Lucie	EXPANSION	10	16	15	51,780	
	Wollfube	Warehouse/Distribution	St. Lucie County	NEW	15	0	15	30,000	
	2021	Amazon First-mile Fulfillment Center	Warehouse/Distribution	Port St. Lucie	NEW	500	0	0	1,100,000
		Chandler Bats	Manufacturing	Port St. Lucie	NEW	11	0	17	17,000
Chemical Technologies Holdings		Manufacturing	St. Lucie County	NEW	5	0	2	8,000	
Cheney Brothers		Warehouse/Distribution	Port St. Lucie	NEW	350	0	201	427,000	
Contender Boats		Marine	St. Lucie County	NEW	200	0	131	100,000	
D&D Welding		Manufacturing	St. Lucie County	EXPANSION	10	32	40	33,000	
FA Precast		Manufacturing	St. Lucie County	EXPANSION	0	22	23	17,000	
Freshco/Indian River Select		Manufacturing	Fort Pierce	EXPANSION	20	90	95	16,375	
Jansteel		Manufacturing	Port St. Lucie	NEW	55	0	0	67,193	
Kings Logistics Center		Industrial Development	St. Lucie County	NEW	433*	0	52	650,000	
Maverick Boat Group		Marine	St. Lucie County	EXPANSION	150	520	470	106,000	
South Florida Logistics Center 95		Industrial Development	St. Lucie County	NEW	866*	0	0	1,300,000	
SRS Distribution		Warehouse/Distribution	Fort Pierce	NEW	11	0	20	32,000	

Company	Industry	Location	Project Scope	Projected New Jobs	Baseline Employment	2023 Total Employment	Facility Square Footage
Amazon Delivery Station	Warehouse/Distribution	Port St. Lucie	NEW	200**	170	300	220,000
Arcosa Meyer Utility Structures	Manufacturing	St. Lucie County	NEW	99	0	12	89,000
Glades Commerce Center	Industrial Development	Port St. Lucie	NEW	192*	0	0	287,500
Glades Logistics Park	Industrial Development	Port St. Lucie	NEW	236*	0	0	354,200
Interstate Commerce Center	Industrial Development	Fort Pierce	NEW	138*	0	0	207,458
Islamorada Distillery	Manufacturing	St. Lucie County	EXPANSION	15	0	8	19,841
Islamorada Warehouse	Warehouse/Distribution	St. Lucie County	EXPANSION	0	0	0	22,000
Legacy Park Spec A & Spec B	Industrial Development	Port St. Lucie	NEW	459*	0	10	688,000
MJC Express	Transportation	Fort Pierce	NEW	25	0	0	6,000
Pursuit Boats Phase 3	Marine	St. Lucie County	EXPANSION	100	634	652	109,000
St. Lucie Commerce Center	Industrial Development	Fort Pierce	NEW	800*	0	0	1,200,000
Tenet Health	Life Sciences	Port St. Lucie	NEW	600†	0	0	181,925
				2,864	804	982	3,384,924

Company	Industry	Location	Project Scope	Projected New Jobs	Baseline Employment	2023 Total Employment	Facility Square Footage
Accel Industrial Park	Industrial Development	Port St. Lucie	NEW	259*	170	0	389,000
Dragonfly Commerce Park	Industrial Development	Port St. Lucie	NEW	270*	0	0	405,508
LactaLogics	Life Science/Headquarters	Port St. Lucie	NEW	60	0	3	60,000
Legacy Park Cold Storage Facility	Warehouse/Distribution	Port St. Lucie	NEW	253*	0	0	380,000
Orange 95 Commerce Center	Industrial Development	Fort Pierce	NEW	391*‡	0	0	587,000‡
Tradition Commerce Park	Industrial Development	Port St. Lucie	NEW	355*	0	0	532,346
Treasure Coast Food Bank	Warehouse/Distribution	Fort Pierce	EXPANSION	53	71	71	113,000
Twin Vee	Marine	Fort Pierce	EXPANSION	0	120	120	23,456
				1,641	361	194	2,490,310

* Projected new jobs are derived from the US Energy Information Administration Energy Consumption Survey = Median square feet per worker at 1,500 ** New facility in 2022, jobs transferred from 2019 project ‡ Includes full-time, part-time and per diem workers

City of Ft. Pierce, Florida

Fort Pierce is famous for being a quaint fishing village, but take a closer look and you will find a treasure trove of activities. As one of the most diverse communities on the Treasure Coast, Fort Pierce has the cultural excitement to rival any “big city” atmosphere. With weekly and monthly events and premier shows at the Sunrise Theatre, visitors never run out of things to do or people to meet.

Fort Pierce is located on the pristine Indian River Lagoon with one of the best all-weather inlets in the state of Florida. Even though Fort Pierce is known for its world class fishing, some visitors would rather take an eco-friendly motorized kayak down the Indian River or dolphin watch on a tour boat. Paddle boarding and horseback riding on unspoiled beaches is also a hit among tourists. Fort Pierce’s natural beauty is world renowned.

Our cultural enhancements include the Zora Neale Hurston Trail, commemorating the noted author and anthropologist who lived her last years in Fort Pierce and the Highwaymen Heritage Trail. The Highwaymen, also referred to as the Florida Highwaymen, are 26 storied, world-renown African American landscape artists who originated in the City of Fort Pierce. Visitors from all over the United States visit Fort Pierce to experience the Highwaymen Heritage Trail, a self-guided engaging and educational experience that recognizes these mostly self-taught landscape artists who have strong local, state, national and international significance.

Museums in Fort Pierce include the newly-enlarged Florida landscape artist A.E. “Beanie” Backus museum and the St. Lucie Regional History Museum, with its satellite Adams Cobb Cultural Museum in the P.P. Cobb Building. Fort Pierce’s most popular tourist attraction, the National UDT Navy SEAL museum, commemorates the birth of the Navy frogmen here in Fort Pierce, and chronicles the evolution of this military unit to today’s Navy SEALs.

Fort Pierce City Marina is home to the Southern Kingfish Association’s National Championship Fishing Tournament every three years bringing 250-300 fishing teams to Downtown Fort Pierce. SKA has also committed to add Fort Pierce to the tournament’s Pro Tour schedule during the off years.

St. Lucie County, Florida

Extensive, dependable transportation and easy access is the key to growth, and St. Lucie County has both in abundance. Interstate Highway 95 and U.S. Highway 1 provide easy access to the country's east coast, from Key West to Maine. The Florida Turnpike stretches from just south of Miami through northern-central Florida, while State Road 70 runs from U.S. Highway 1 in Fort Pierce west to Bradenton, Florida. St. Lucie County offers a plethora of transportation linkages which include rail, a custom-serviced international airport, and a deep-water port – all of which enable easy access to all St. Lucie County has to offer. The St. Lucie County International Airport is also one of the busiest general aviation airports in the state.

The county has a population of over 358,704 and has experienced growth of over 28% since 2010. The area economy is a blend of emerging life science R&D with traditional manufacturing, agriculture, tourism and services. St. Lucie County's natural resources are enviable, with more than 21 miles of pristine coastline and beaches, coral reefs, more than 20,000 acres of public parks and nature preserves, and miles of rivers and waterways. The area boasts over 20 public and semiprivate courses, with prices ranging from upscale to very affordable, and the great weather allows for play all year round. St. Lucie County is home to Clover Park in Port St. Lucie, the Spring training home of the New York Mets.

The county is host to Indian River State College, an institution that has won national recognition for excellence and innovation applied toward training and education. St. Lucie County boasts 52 schools with a total of 43,612 students and 8,800 staff. The Economic Development Council of St. Lucie County (EDC) is a non-profit organization with the goal of creating more, high-paying jobs for residents by working in concert on agreed upon strategies to promote the retention and expansion of existing businesses, as well as attracting new ones to St. Lucie County. Workers employed in St. Lucie County are clustered in the Health Care and Social Assistance (18.4%), and Retail Trade (11.9%) industries. Workers living in St. Lucie County are concentrated in the Health Care and Social Assistance (16.3%), and Retail Trade (14.1%) industries. Since 2017 the EDC has facilitated 40 expansion and new attraction job creating projects with a net growth of building area of approximately 6,500,000 square feet.





Nikolaus M. Schroth, CCIM

Broker Associate | Principal

+1 772 286 6292
nikschroth@naisouthcoast.com



J. Jeffery Allman, Jr.

Sales Associate

+1 772 286-6292 c +1 772 283 1555
jeff@naisouthcoast.com



James McKinney

Sales Associate

+1 772 349 3414
jamesmckinney@naisouthcoast.com

Turnkey Distillery and Production Facility

3250 St Lucie Blvd, Fort Pierce, FL 34946

FOR SALE:

\$5,900,000

(\$4,200,000 Real Estate / \$1,700,000 Equipment)

FOR LEASE:

\$35,000/Month NNN