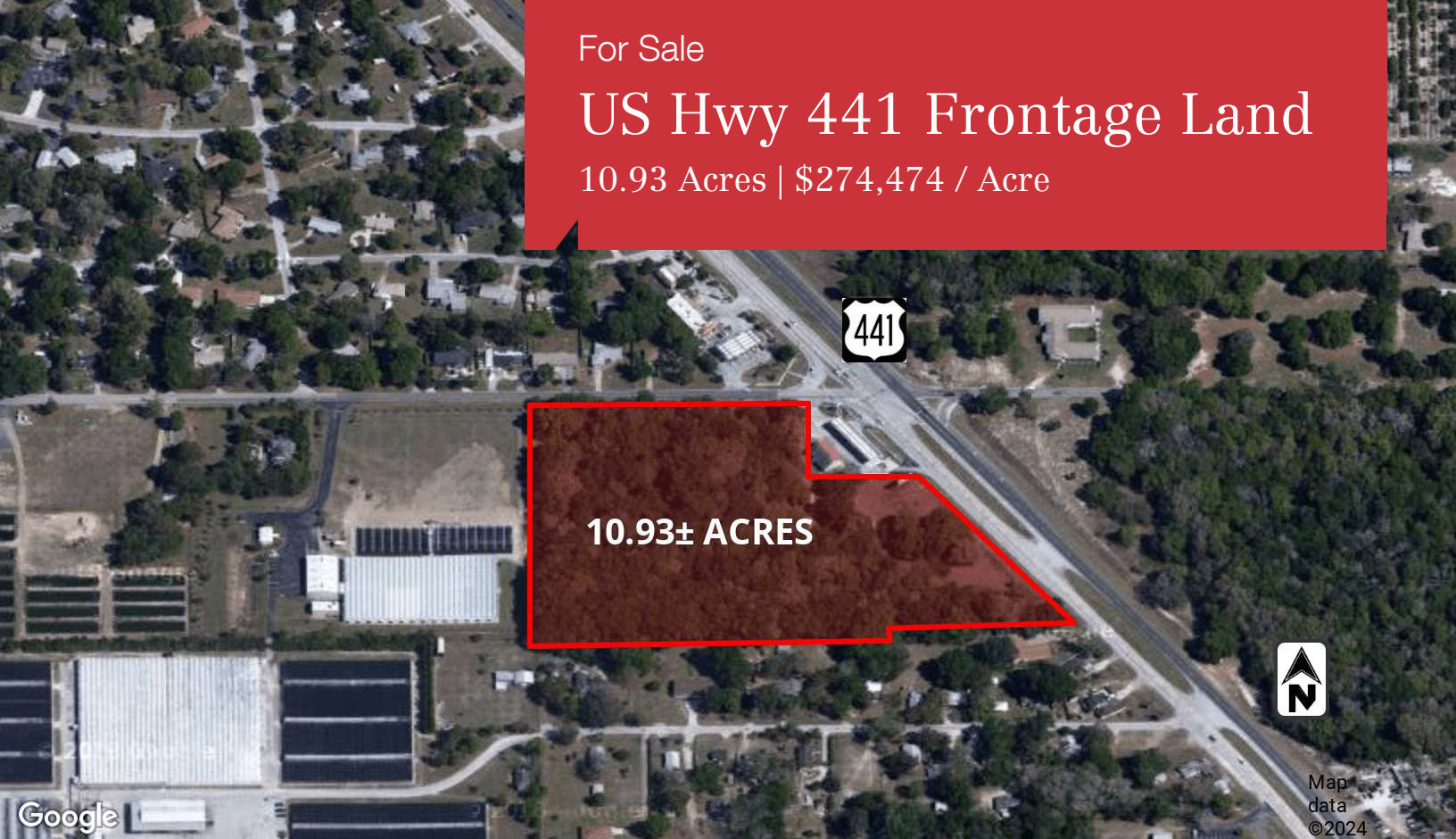


For Sale

# US Hwy 441 Frontage Land

10.93 Acres | \$274,474 / Acre



## 6726 Sadler Road

Mount Dora, Florida 32757

### Property Highlights

- 10.93± acre development parcel
- Over 500 feet of frontage on US Hwy 441
- Located on a signalized intersection
- Water/sewer available at the site (City of Apopka)
- Outstanding visibility and access
- Traffic count: 32,850 AADT
- Billboard on site
- Zoning: C-1, Orange County
- Great location for retail, restaurant, and self-storage

### Demographics

	3 Miles	5 Miles	7 Miles
Total Households	3,548	13,858	36,997
Total Population	9,441	34,959	93,873
Average HH Income	\$127,776	\$109,706	\$108,393

### OFFERING SUMMARY

<b>Sale Price</b>	<b>\$3,000,000</b>
<b>Lot Size</b>	<b>10.93 Acres</b>



For more information

**Kevin O'Connor**

O: 407 949 0736  
koconnor@realvest.com

**Matthew Cichocki**

O: 407 949 0738  
mcichocki@realvest.com

# Regional Map

