

FOR LEASE | INDUSTRIAL OUTDOOR STORAGE



AT REGENCY INDUSTRIAL PARK

±3 - 8 AC OPTIONS AVAILABLE | BUILT-TO-SUIT OPPORTUNITY



ESTIMATED DELIVERY Q4 2024

PROPERTY DETAILS

- + 2,200 SF Office Trailer
- + Multi-Tenant or Single-Tenant
 - + 3 AC - 8 AC
- + 2 points of ingress & egress
- + 253+/- trailer stalls per site plan shown
- + New fencing & heavy duty gravel
- + New LED site lighting

HIGHLIGHTS

- + Class A IOS Facility
- + I-4, Heavy Industrial Zoning - Orange County
- + Build-to-suit opportunities
- + Endless outdoor storage capabilities
- + In-fill location
- + Great highway accessibility

CONTACT US

JEROD FREELAND | VICE PRESIDENT
321.591.5404
jerod.freeland@foundrycommercial.com

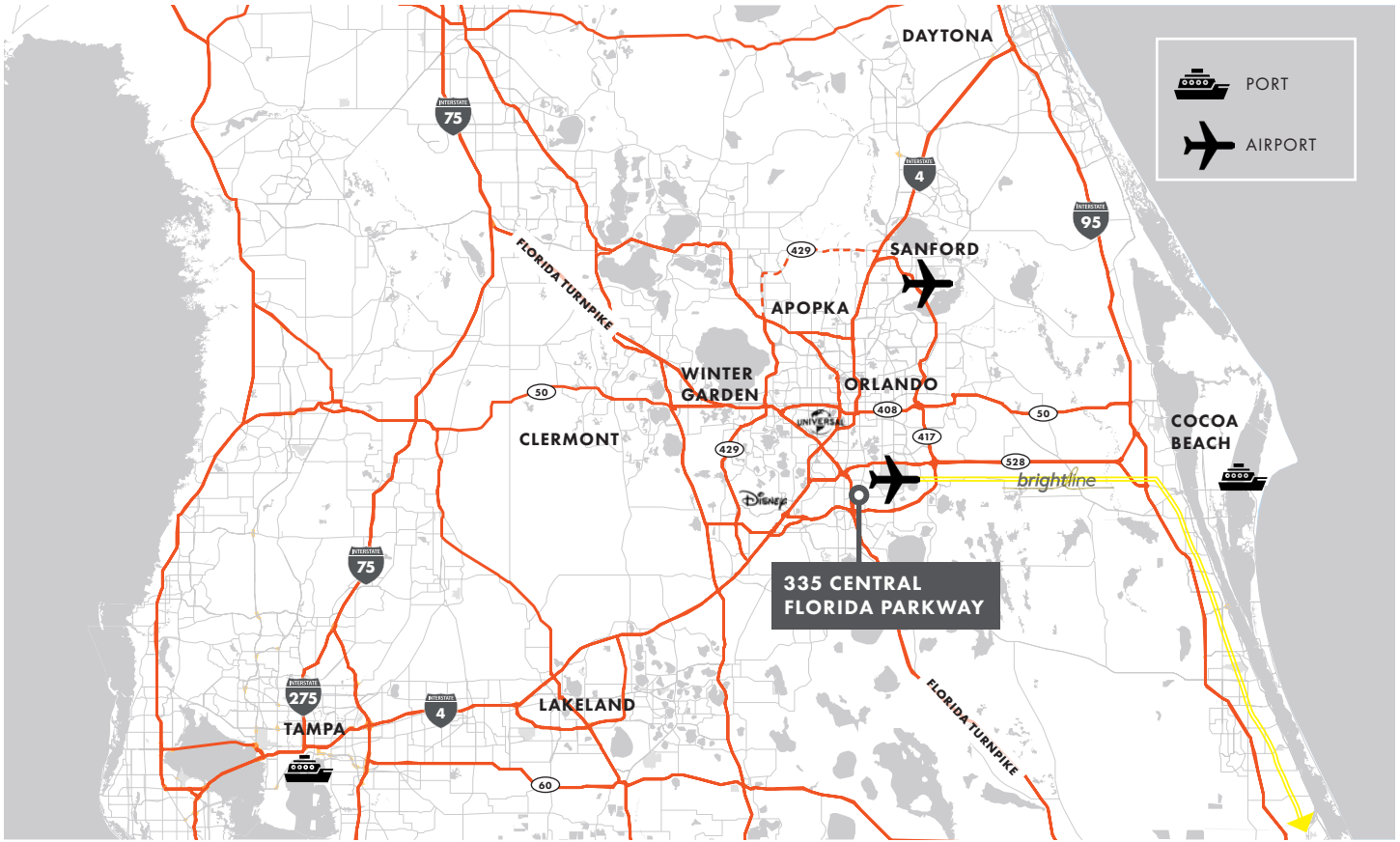
JUSTIN RUBY, SIOR, CCIM | PARTNER
407.865.0311
justin.ruby@foundrycommercial.com

CHARLES ATTAWAY | ASSOCIATE
407.963.4064
charles.attaway@foundrycommercial.com

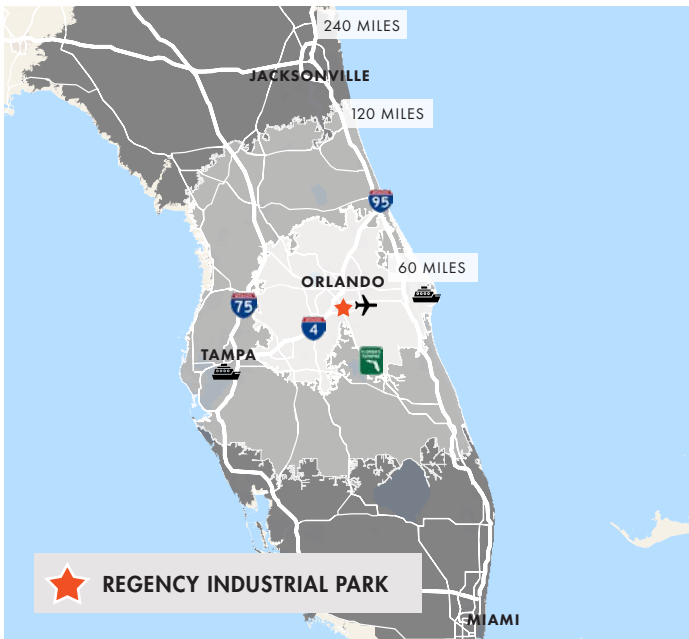
REGENCY INDUSTRIAL PARK

335 Central Florida Pkwy, Orlando, FL 32824

ACCESS MAP



DRIVE TIME MAP



DRIVE TIME TO CITIES

Disney	15 min
Downtown Orlando	18 min
Winter Garden	20 min
Kissimmee	23 min
Apopka	25 min
Winter Park	26 min
Longwood	30 min
Sanford	45 min
Port Canaveral	50 min
Lakeland	50 min
Daytona Beach	65 min
Ocala	75 min
Tampa	85 min

CONTACT US

JEROD FRELAND | VICE PRESIDENT
321.591.5404
jerod.freland@foundrycommercial.com

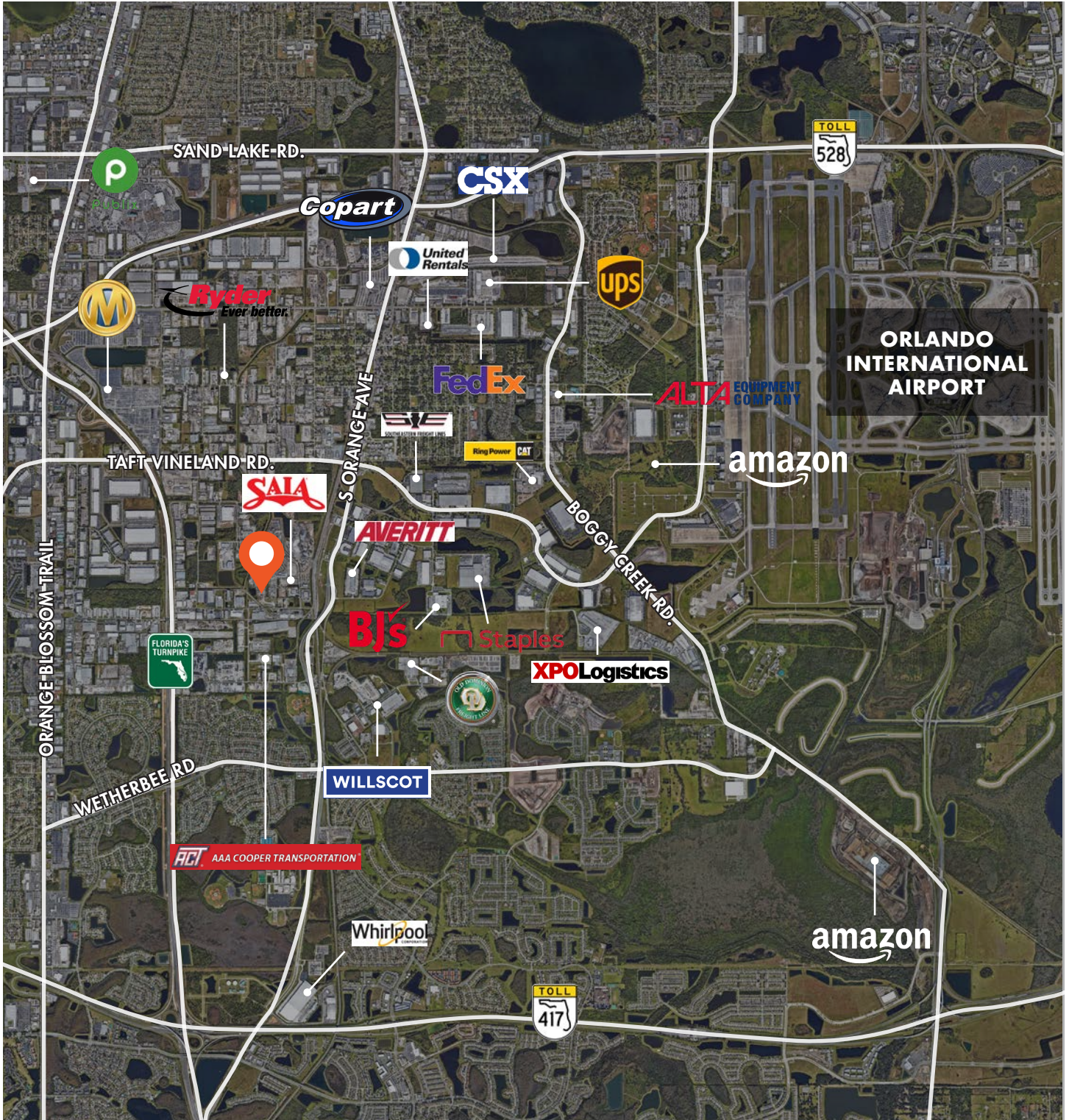
JUSTIN RUBY, SIOR, CCIM | PARTNER
407.865.0311
justin.ruby@foundrycommercial.com

CHARLES ATTAWAY | ASSOCIATE
407.963.4064
charles.attaway@foundrycommercial.com

REGENCY INDUSTRIAL PARK

335 Central Florida Pkwy, Orlando, FL 32824

LOCAL MAP



CONTACT US

JEROD FRELAND | VICE PRESIDENT
321.591.5404
jerod.freland@foundrycommercial.com

JUSTIN RUBY, SIOR, CCIM | PARTNER
407.865.0311
justin.ruby@foundrycommercial.com

CHARLES ATTAWAY | ASSOCIATE
407.963.4064
charles.attaway@foundrycommercial.com