



# SUWANNEE RIVER RETREAT

20855 151ST DRIVE  
O'BRIEN, FL 32071

**Bryant Peace, ALC**

229.726.9088

[bryant.peace@svn.com](mailto:bryant.peace@svn.com)

**John A. "Tony" Wallace, CF**

352.538.7356

[tony.wallace@svn.com](mailto:tony.wallace@svn.com)

# Property Overview



**Sale Price**

**\$1,990,000**

## PROPERTY OVERVIEW

This riverfront estate features a gorgeous log home sitting on the banks of the Suwannee River. The home includes 5 bedrooms and 4 full bathrooms with an open floor plan and vaulted ceiling. There is a second home and additional acreage available. There is also a floating dock, outdoor cooking area, and multiple equipment barns for storage. The sale includes a 24-foot Sun Tracker boat and home furnishings.

The property features over 1,400 linear feet of frontage on the Suwannee River. The land is almost entirely upland and buildable for the future development of additional lodging. There are approximately 12 acres of fenced, improved pasture with room to add more if desired. This is one of the last large acreage parcels remaining on this stretch of the Suwannee River and the improvements make the property turn-key to serve as a hobby farm, equestrian estate or retreat facility.

## OFFERING SUMMARY

<b>Acreage:</b>	<b>82± Acres</b>
Price / Acre:	\$24,268
City:	O'Brien
County:	Suwannee
Property Type:	Riverfront
Video:	<a href="#">View Here</a>

# Specifications & Features



## SPECIFICATIONS & FEATURES

Land Types:	<ul style="list-style-type: none"><li>• Equestrian</li><li>• Waterfront</li></ul>
Uplands / Wetlands:	92% Uplands
Soil Types:	<ul style="list-style-type: none"><li>• Bigbee-Garcon-Meggett Complex</li><li>• Blanton-Alpin Complex</li></ul>
Zoning / FLU:	ESA-2 [1 Dwelling per 10 acres]
Lake Frontage / Water Features:	1,400 feet of Suwannee River frontage
Water Source & Utilities:	Well & Septic
Nearest Point of Interest:	26 miles to Live Oak, FL 38 miles to Lake City, FL 60 miles to Gainesville, FL
Potential Recreational / Alt Uses:	Vacation Rental Riverfront camping Outdoor recreation
Structures & Year Built:	4200 SF Main Lodge [1994]





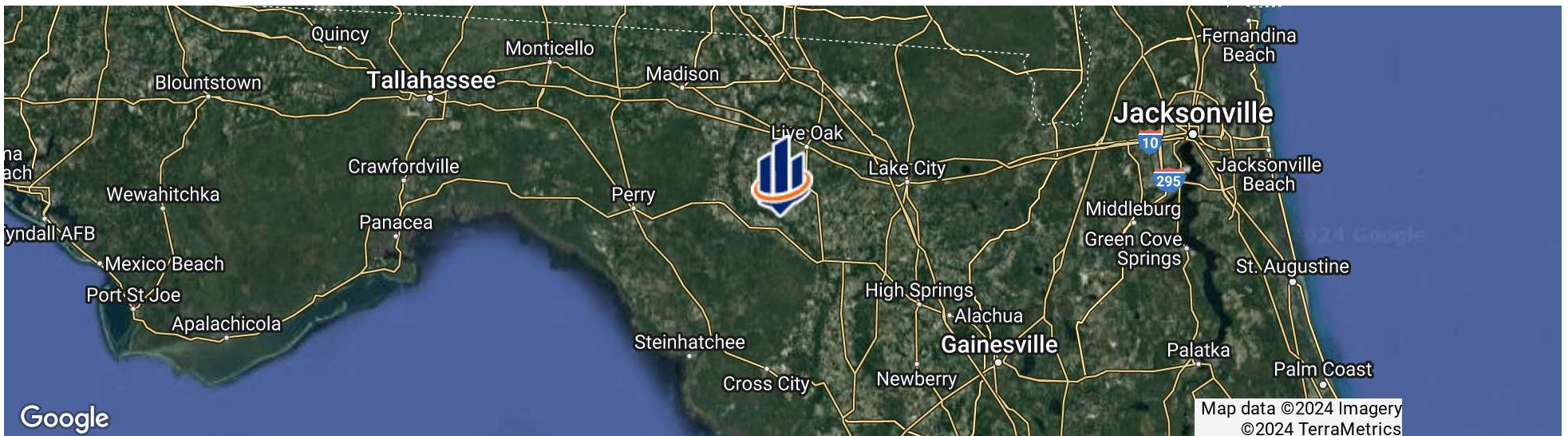


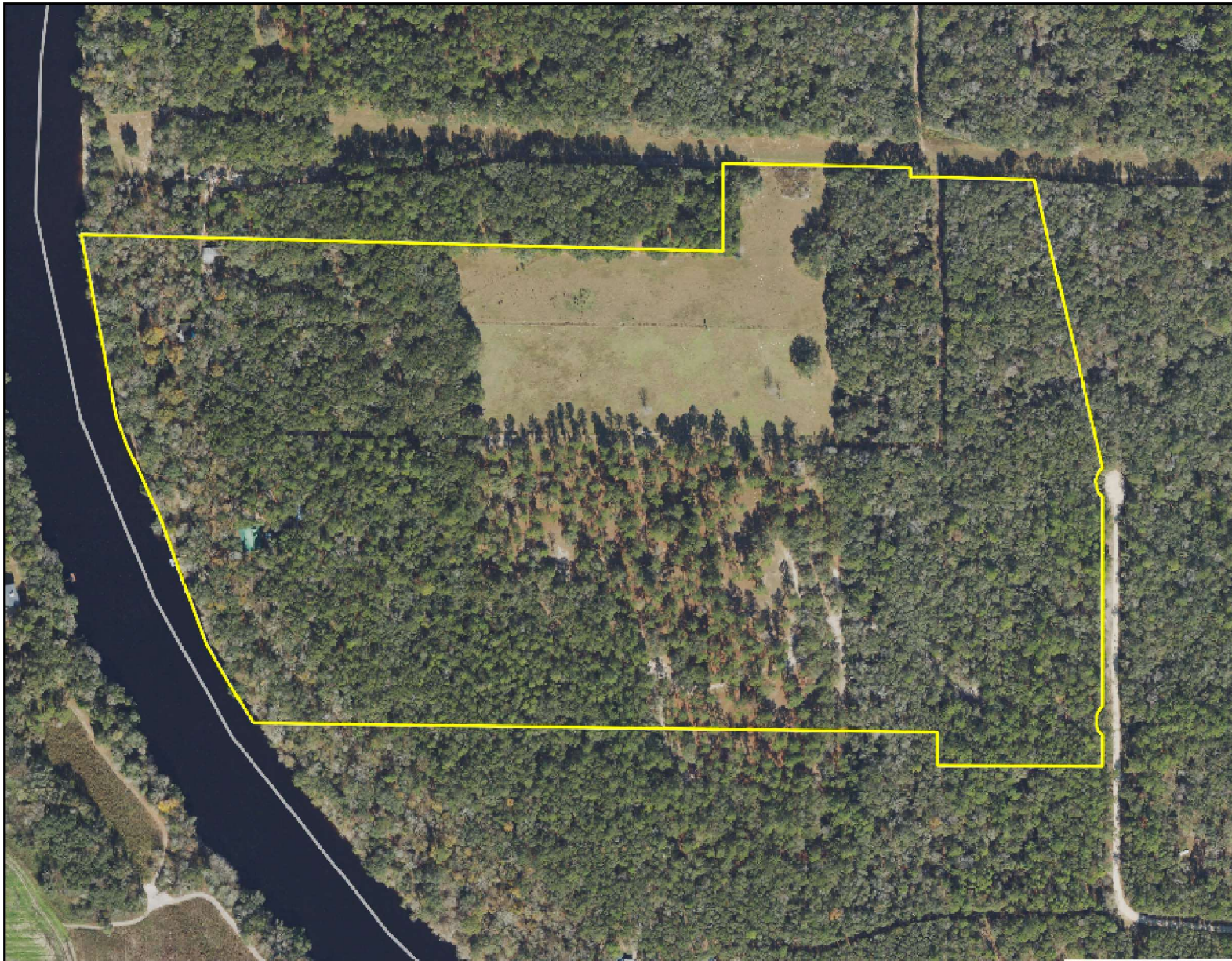
## LOCATION & DRIVING DIRECTIONS

Parcel: 1205S12E10895001000  
GPS: 30.0695524, -83.06836539999999

- Driving Directions:
- From Live Oak take FL-51 South
  - Turn left on CR 349
  - Turn right on 210th Street
  - Turn right on Riverside Drive
  - Property is on the left

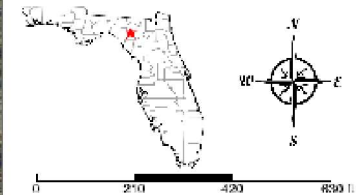
Showing Instructions: Contact listing agent.



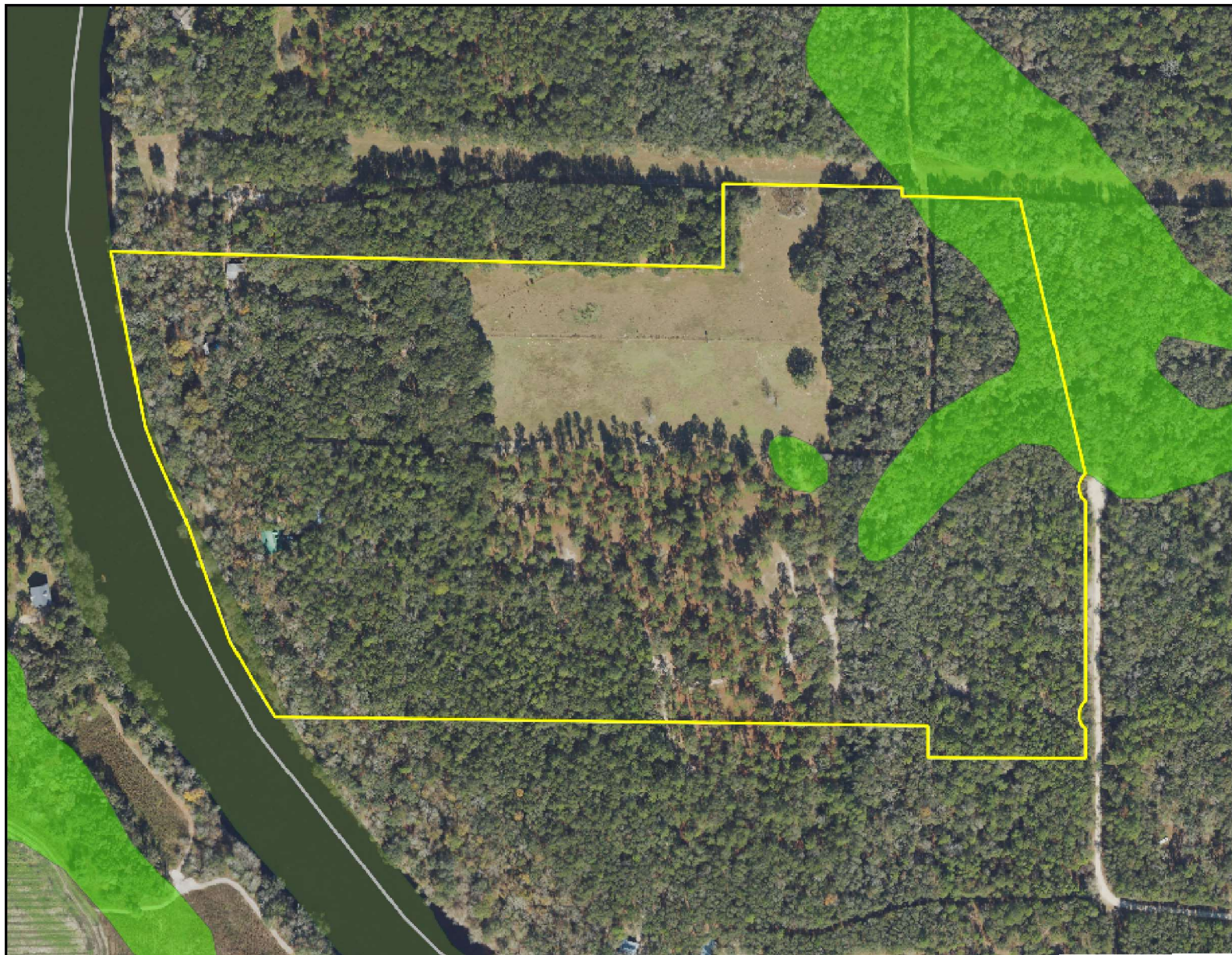


### Revised Aerial Map







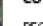
- County Boundaries
- Polygons Drawing
- Lines Drawing
- Labels Drawing
- Points Drawing



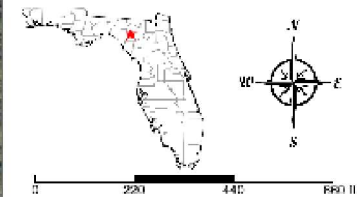
©2023 SVN®. SVN | Saunders Ralston Dantzer Real Estate® is a registered trademark, licensed to SVN Shared Value Network®. Any information displayed should be verified and is not guaranteed to be accurate by SVN Saunders Ralston Dantzer. You may not copy or use this material without written consent from SVN Saunders Ralston Dantzer.



### Revised NWI Map

-  County Boundaries
-  Polygons Drawing
-  Lines Drawing
-  Labels Drawing
-  Points Drawing
-  Estuarine
-  Lacustrine
-  Marine
-  Palustrine
-  Riverine

CODE	DESC	ACRES
PF01C	Freshwater Forested/Shrub Wetland	5.4
R2UBH	Riverine	.8
PEM1C	Freshwater Emergent Wetland	.5
TOTAL WETLANDS		6.7
TOTAL UPLANDS		75.7
TOTAL ACRES		82.4



©2013 SVN©. SVN | Saunders Ralston Danziger Real Estate® is a registered trademark. Licensed to SVN Shared Value Network®. Any information displayed should be verified and is not guaranteed to be accurate by SVN Saunders Ralston Danziger. You may not copy or use this material without written consent from SVN Saunders Ralston Danziger.





# Main Lodge



# Guest House





**BRYANT PEACE, ALC**

Senior Advisor

bryant.peace@svn.com

Direct: 877.518.5263 x374 | Cell: 229.726.9088

## PROFESSIONAL BACKGROUND

Bryant Peace, ALC is a Senior Advisor at SVN | Saunders Ralston Dantzler Real Estate in Thomasville, Georgia.

Bryant is a lifelong enthusiast of wildlife and natural resource management and enjoys evaluating and managing lands based on client objectives. He currently serves in land brokerage for SVN Saunders Ralston Dantzler throughout Florida, Georgia and Alabama. His formal education includes degrees from Georgia Southern University and Gordon Conwell Theological Seminary and he continues to educate himself through the Realtors Land Institute and several noted wildlife management institutions.

When it comes to serving an investor, Bryant develops a thorough understanding of his clients' use and management objectives before evaluating specific land types to fit those objectives. Likewise, he understands that to serve his selling clients properly, it is required of him to develop a thorough understanding of their family dynamics, financial picture, and divestment time horizon.

"Ultimately, I exist to serve and to cultivate. I believe there is no better sector of the economy to accomplish this than in the arena of natural resources." – Bryant Peace

Bryant specializes in:

SVN | Saunders Ralston Dantzler  
203 E Monroe St.  
Thomasville, GA 31792



**JOHN A. "TONY" WALLACE, CF**

Senior Advisor

tony.wallace@svn.com

Direct: **877.518.5263 x336** | Cell: **352.538.7356**

## PROFESSIONAL BACKGROUND

Tony Wallace, CF, ACF is a Senior Advisor at SVN | Saunders Ralston Dantzler Real Estate in Lake City, Florida.

Tony is the Chief Operating Officer and a principal of Natural Resource Planning Services, Inc., [NRPS] a forestry consulting firm operating in Florida and Georgia. Learn more at [NRPSforesters.com](http://NRPSforesters.com).

Tony is a Florida Certified General Real Estate Appraiser, a Georgia Registered Forester, a Certified Burn Manager in Georgia, a Certified Forester through the Society of American Foresters, as well as a member of the Association of Consulting Foresters. He has over 30 years of experience providing a full range of forestry and land management services to clients throughout Florida and Georgia.

Tony holds a Bachelor of Science degree in forestry from Mississippi State University.

Tony is a member of the Society of American Foresters, a past member of the board of directors, and has held past offices for the Florida Forestry Association. He has also served on the land management advisory committee of the Suwannee River Water Management District and on the technical committee for the Florida Department of Agriculture and Consumer Services.

**SVN | Saunders Ralston Dantzler**  
356 NW Lake City Avenue  
Lake City, FL 32055  
352.364.0070



# ONE OF AMERICA'S BEST BROKERAGES



One of America's  
Best Brokerages



APEX 2022 Top  
National Producer



Most Influential  
Business Leaders



Largest Commercial  
Real Estate Brokers  
in Tampa Bay



Ranked 210 on Inc.  
5000 Regional List



For more information visit [www.SVNsaunders.com](http://www.SVNsaunders.com)

**HEADQUARTERS**

1723 Bartow Rd  
Lakeland, FL 33801  
863.648.1528

**ORLANDO**

605 E Robinson Street, Suite 410  
Orlando, Florida 32801  
386.438.5896

**NORTH FLORIDA**

356 NW Lake City Avenue  
Lake City, Florida 32055  
352.364.0070

**GEORGIA**

203 E Monroe Street  
Thomasville, Georgia 31792  
229.299.8600

**ARKANSAS**

112 W Center St, Suite 501  
Fayetteville, Arkansas 72701  
479.582.4113

©2024 Saunders Ralston Dantzler Real Estate. All SVN® Offices Independently Owned and Operated SVN | Saunders Ralston Dantzler Real Estate is a full-service land and commercial real estate brokerage representing buyers, sellers, investors, institutions, and landowners since 1996. We are recognized nationally as an authority on all types of land, including agriculture, ranch, recreation, and residential development. Our commercial real estate services include property management, leasing and tenant representation, valuation, business brokerage, and advisory and counseling services for office, retail, industrial, and multifamily properties. Our firm also features an auction company, a forestry division, international partnerships, and extensive expertise in conservation easements. Located in Florida, Georgia, and Alabama, we provide proven leadership and collaborative expertise backed by the strength of the SVN® global platform.

