



## Property Highlights

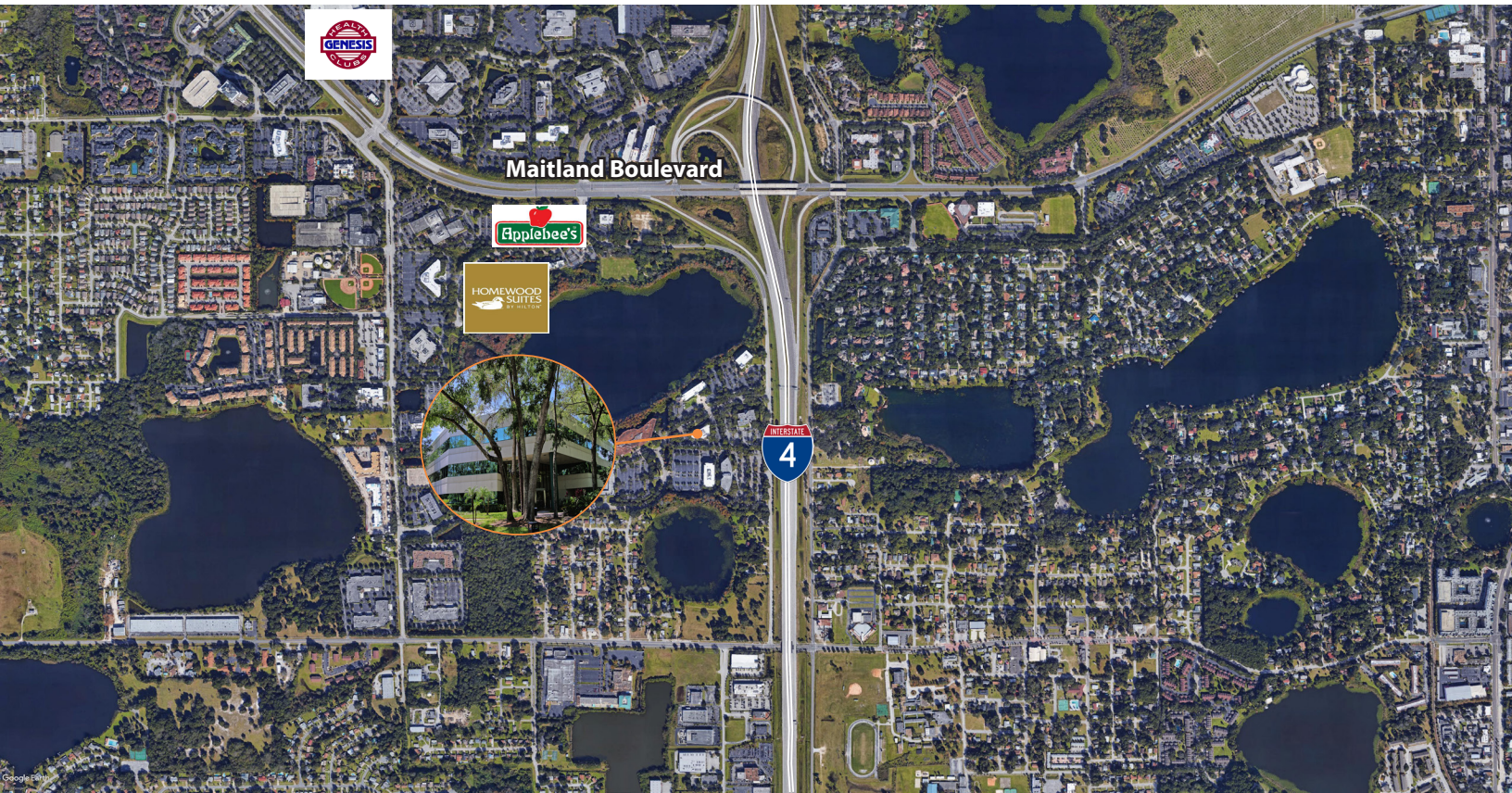
- Park like setting with mature landscaping
- 1,442± sf - 8,591± sf available
- Convenient access to Interstate-4
- Minutes to Downtown Orlando
- First floor restrooms newly renovated / Second floor restroom renovations coming in 2024
- Nearby amenities include the Genesis Health Club, Sam Snead's Tavern and other restaurants
- Shared building conference room available in adjacent Lake Lucien Executive Center building
- Abundant parking

**Emily Zinaich**, Senior Vice President  
D 407 440 6641  
C 407 230 8797  
[emily.zinaich@avisonyoung.com](mailto:emily.zinaich@avisonyoung.com)



**AVISON  
YOUNG**

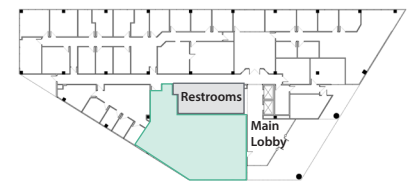
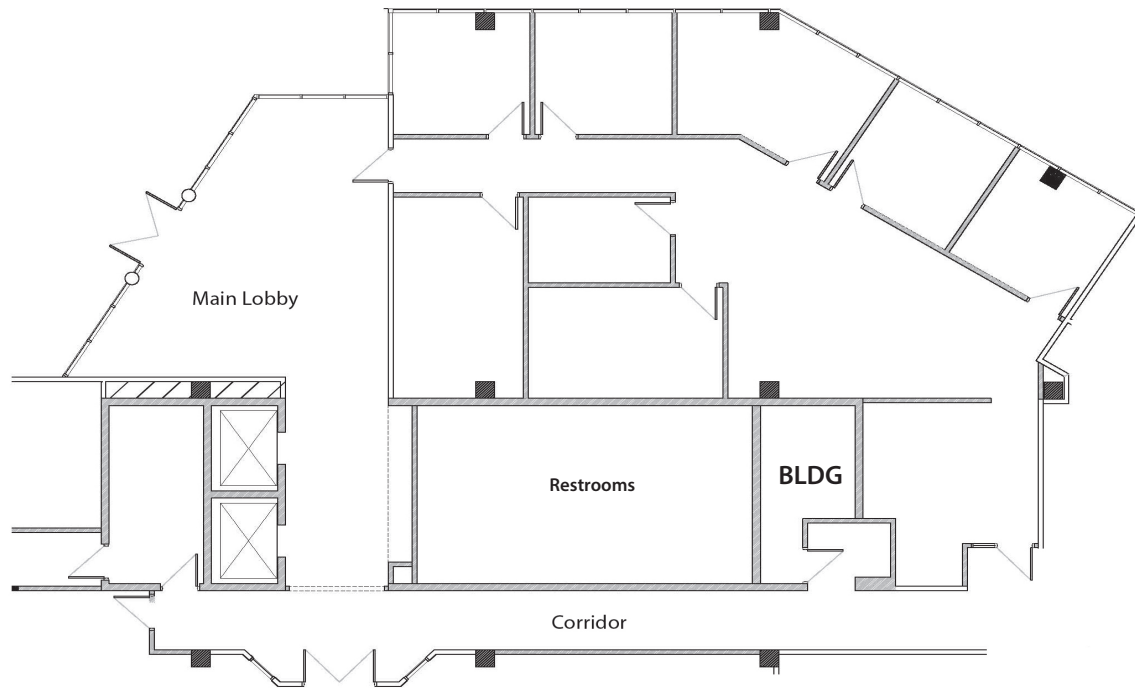
For Lease  
**Lucien Green**  
2250 Lucien Way  
Maitland, FL 32751



**Emily Zinaich**, Senior Vice President  
D 407 440 6641  
C 407 230 8797  
[emily.zinaich@avisonyoung.com](mailto:emily.zinaich@avisonyoung.com)



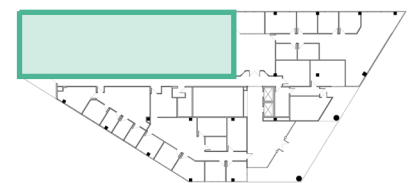
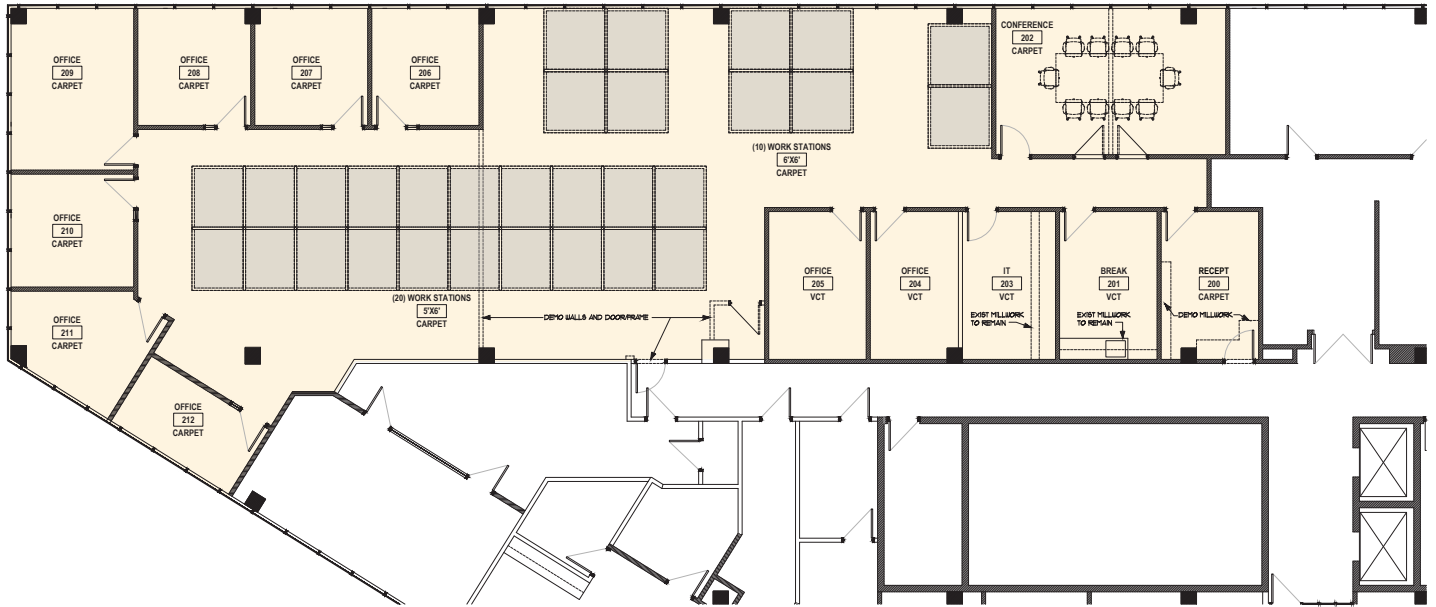
## Suite 120 - 2,406± rsf



**KEY PLAN**

**Emily Zinaich**, Senior Vice President  
D 407 440 6641  
C 407 230 8797  
emily.zinaich@avisonyoung.com

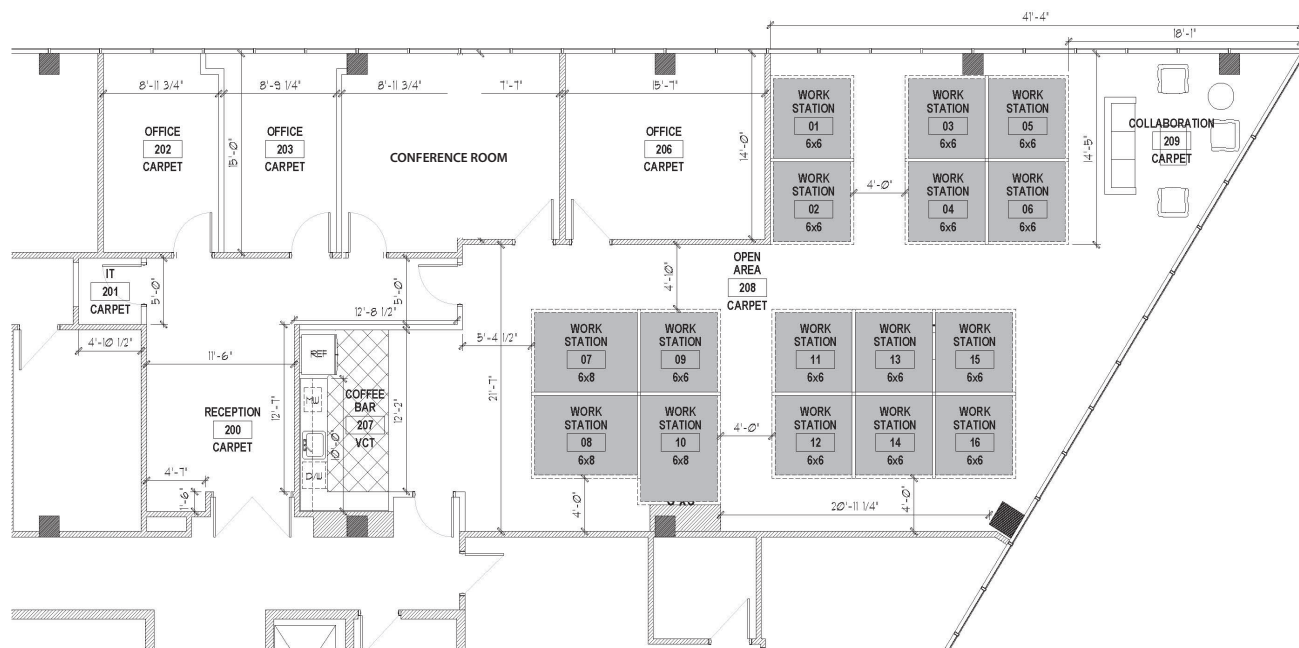
## Suite 240 - 5,550± rsf



KEY PLAN

Emily Zinaich, Senior Vice President  
D 407 440 6641  
C 407 230 8797  
emily.zinaich@avisonyoung.com

## Suite 250 - 3,041± rsf



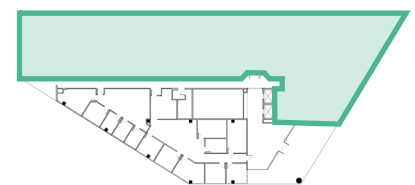
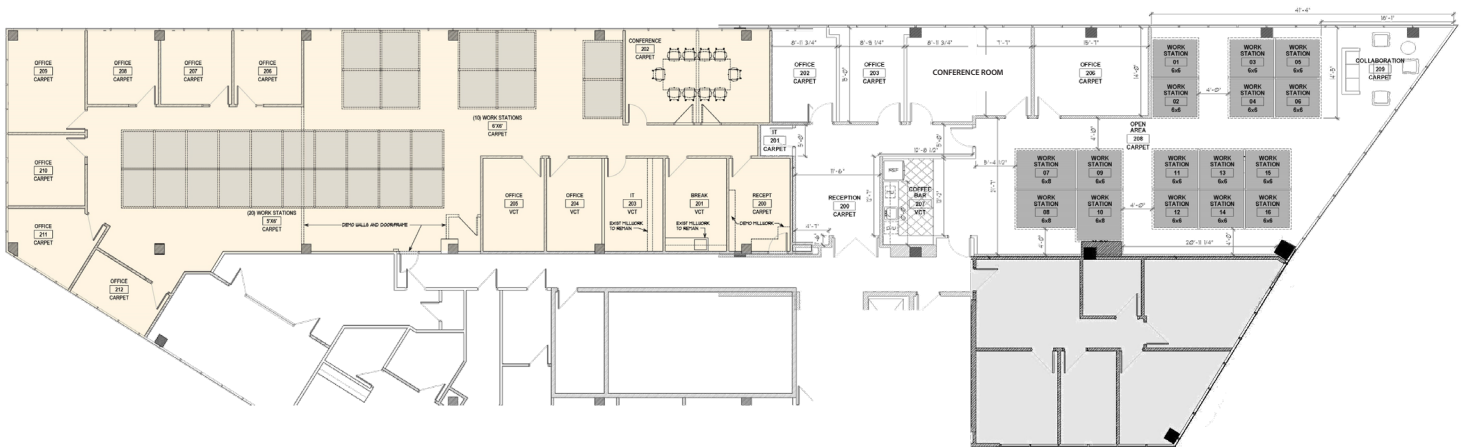
SAMPLE LAYOUT



KEY PLAN

Emily Zinaich, Senior Vice President  
 D 407 440 6641  
 C 407 230 8797  
 emily.zinaich@avisonyoung.com

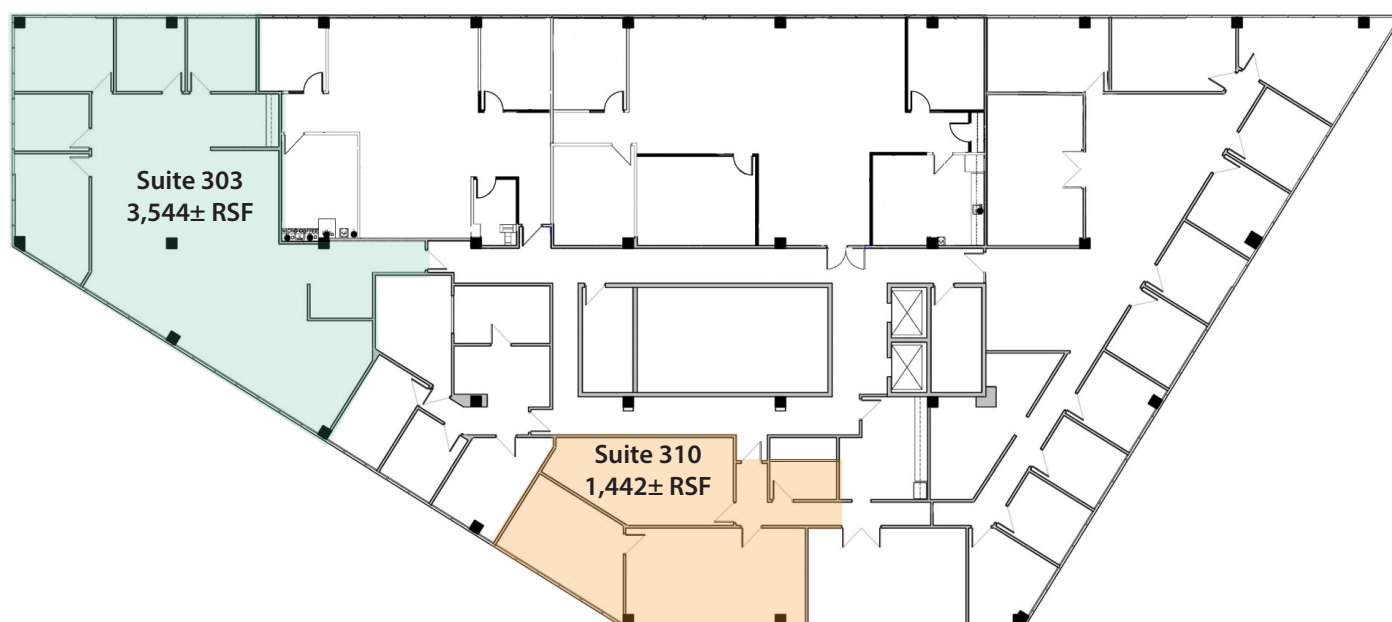
# Suite 240 - 270 - 8,591± rsf



**KEY PLAN**

**Emily Zinaich**, Senior Vice President  
D 407 440 6641  
C 407 230 8797  
emily.zinaich@avisonyoung.com

## Third Floor Suites



**Emily Zinaich**, Senior Vice President  
D 407 440 6641  
C 407 230 8797  
emily.zinaich@avisonyoung.com