

office space
for
LEASE

1,952sf

\$24.00/sf fs



FLORIDA MALL BUSINESS CENTRE

- + Primary Use: Professional Office
- + Space Cond.: Move-In Ready
- + Parking: 3.91 / 1,000
- + Signage: Marquee

- + Bulding: 85,053 SF
- + Stories: 3
- + Year Buit: 1987

1650 Sand Lake Road
Orlando, Florida 32809

patrick goetz
vice president
(407) 734.7210
pat@BBDRE.com



Bishop Beale Duncan
COMMERCIAL REAL ESTATE

THE FLORIDA MALL[®]
A SIMON MALL



sand lake rd

orange blossom trl

highlights

Located on the
hard corner of
Orange Blossom
Trail and Sand
Lake Rd

- Tenant-Only Parking Deck with Secure Access
- Central South Orlando Location:
 - 2 miles from Florida Highway 528
 - 2 Miles from the Florida Turnpike
 - 5 miles from Interstate 4
 - 7 miles from the Orlando International Airport



250 N. Orange Ave., Ste. 1500
Orlando, FL 32801
+ (407) 426.7702
www.BBDRE.com

This offer is subject to errors, omissions, prior sale or withdrawal without notice.



for more information, contact patrick goetz vice president (407) 734.7210 pat@BBDRE.com

elevation



exterior

for more information, contact patrick goetz vice president (407) 734.7210 pat@BBDRE.com

interior photos



open area



office



breakroom



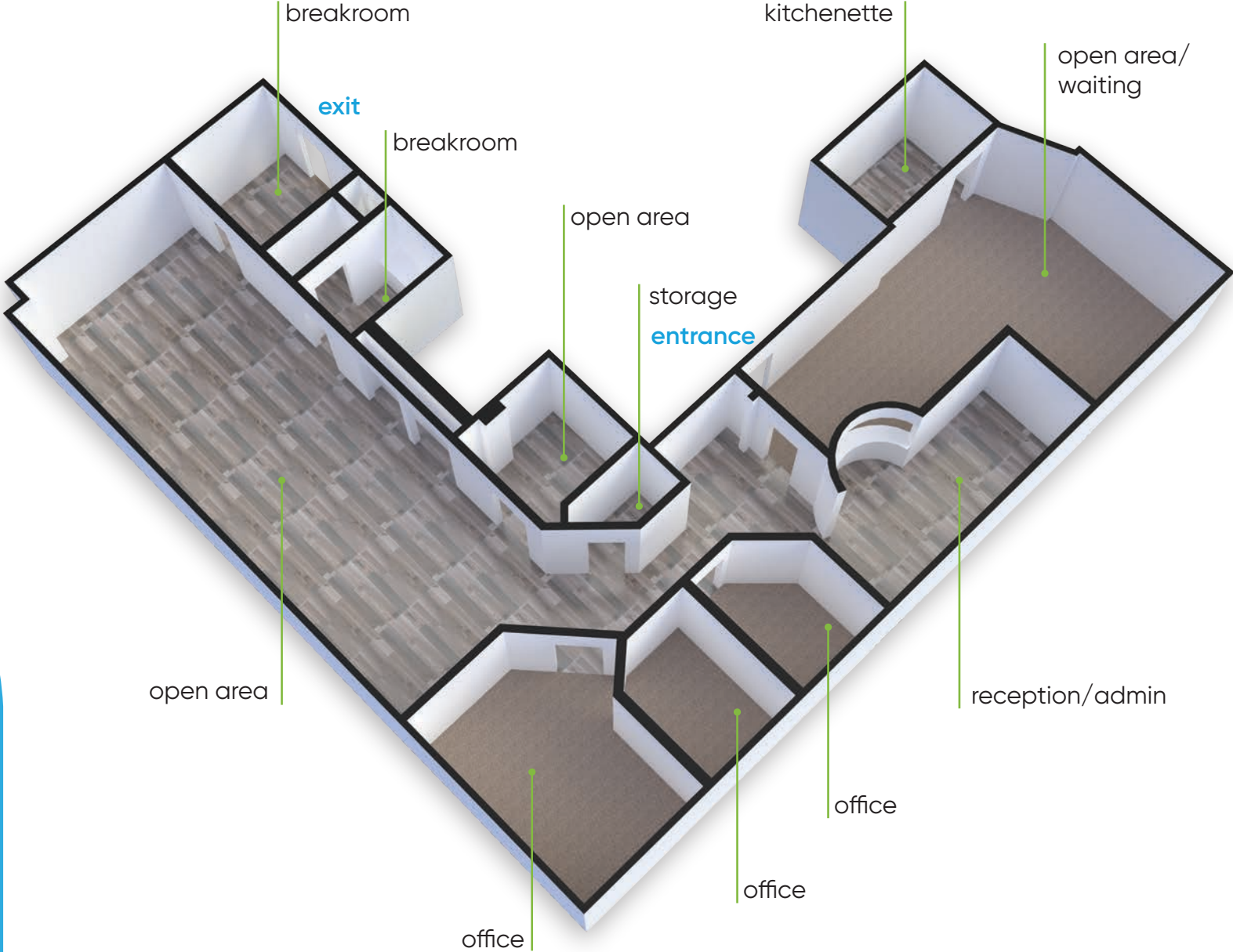
office

interiors



for more information, contact patrick goetz vice president (407) 734.7210 pat@BBDRE.com

suite 365 | 1,952 sf

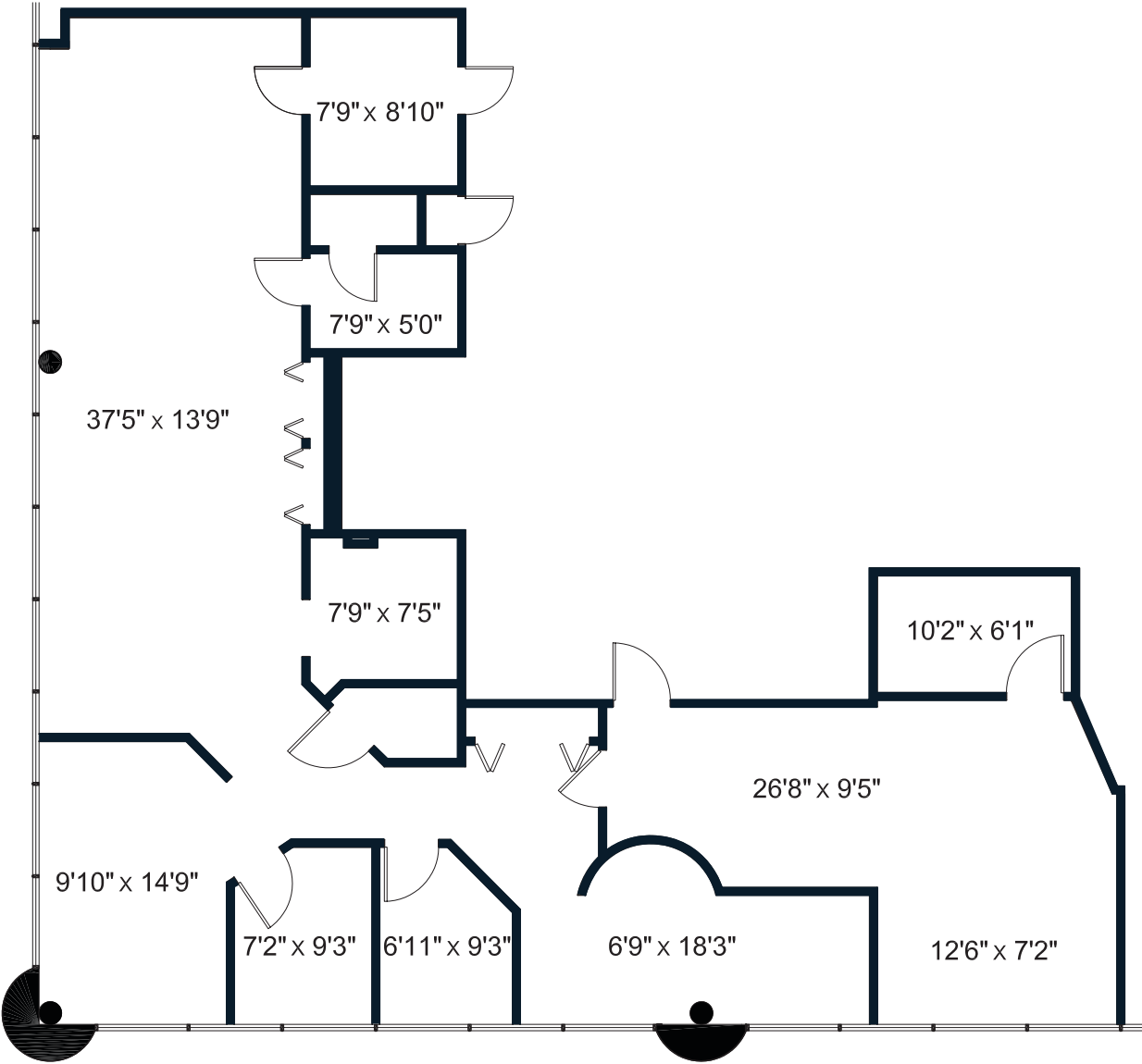


3D layout



for more information, contact patrick goetz vice president (407) 734.7210 pat@BBDRE.com

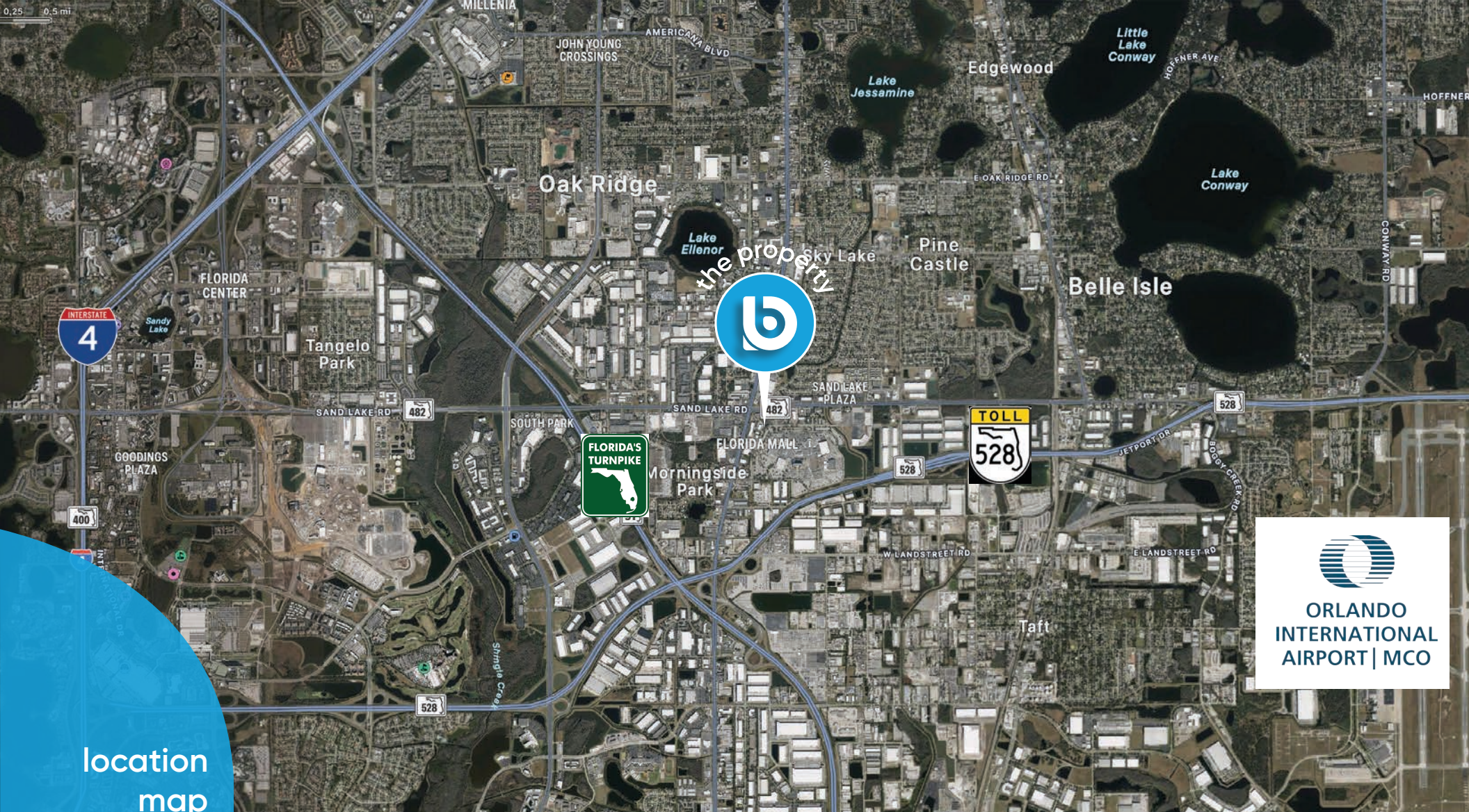
suite 365 | 1,952 sf



floor plan



for more information, contact patrick goetz vice president (407) 734.7210 pat@BBDRE.com



location
map

demographics

Radius	Population	HH Income	Businesses	Employees
1-Mile	5,679	\$65,925	1,217	16,022
2-Mile	22,686	\$60,287	3,630	40,459
3-Mile	70,900	\$62,232	6,315	67,455



for more information, contact patrick goetz vice president (407) 734.7210 pat@BBDRE.com