



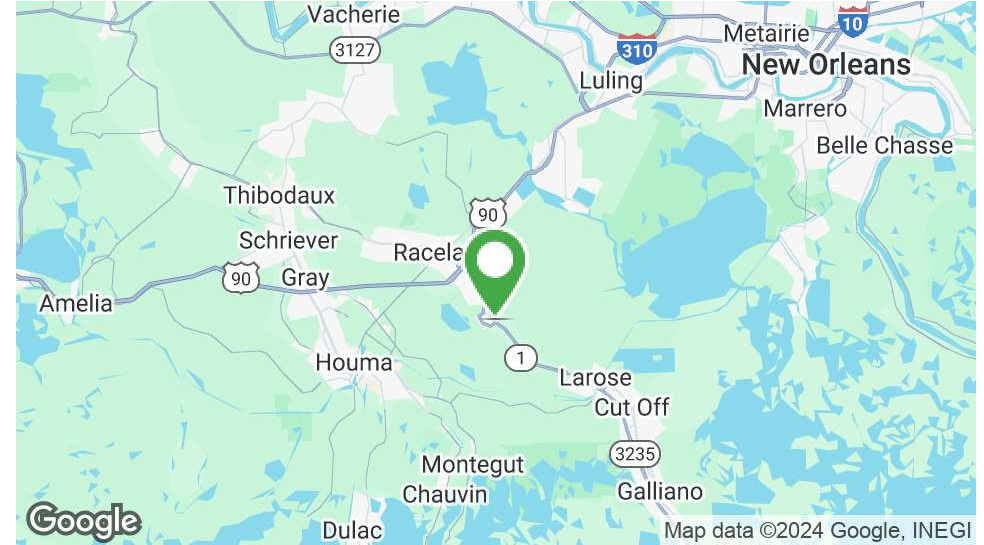
# LOCKPORT ROUSES MARKETS OUTPARCELS

1428 Crescent Avenue, Lockport, LA 70374

MATT EATON, CCIM • PARTNER  
OFFICE: 504.414.0703  
MOBILE: 504.339.2136  
matt@matteatonccim.com

MARTIN O. MILLER III, CCIM, SIOR • PARTNER  
OFFICE: 504.414.0703  
MOBILE: 504.616.5700  
momiller@ccim.net

LOCKPORT LOWER ELEMENTARY SCHOOL



## PROPERTY DESCRIPTION

Southeast Commercial is pleased to offer two Rouses Markets outparcels FOR SALE in Lockport, LA. The outparcels are located on the corner of Crescent Avenue and Main Street. The sites have excellent visibility/frontage for any retailer looking to be in one of the only grocery store anchored centers in Lockport. Outparcel 1 is +/- 50,000 SF and Outparcel 2 is +/- 240,000 SF. Contact agent(s) for pricing.

## OFFERING SUMMARY

Sale Price:	Contact Agent(s)
Outparcel 1:	+/- 50,000 SF
Outparcel 2:	+/- 240,000 SF

LAND FOR SALE

## PROPERTY SUMMARY





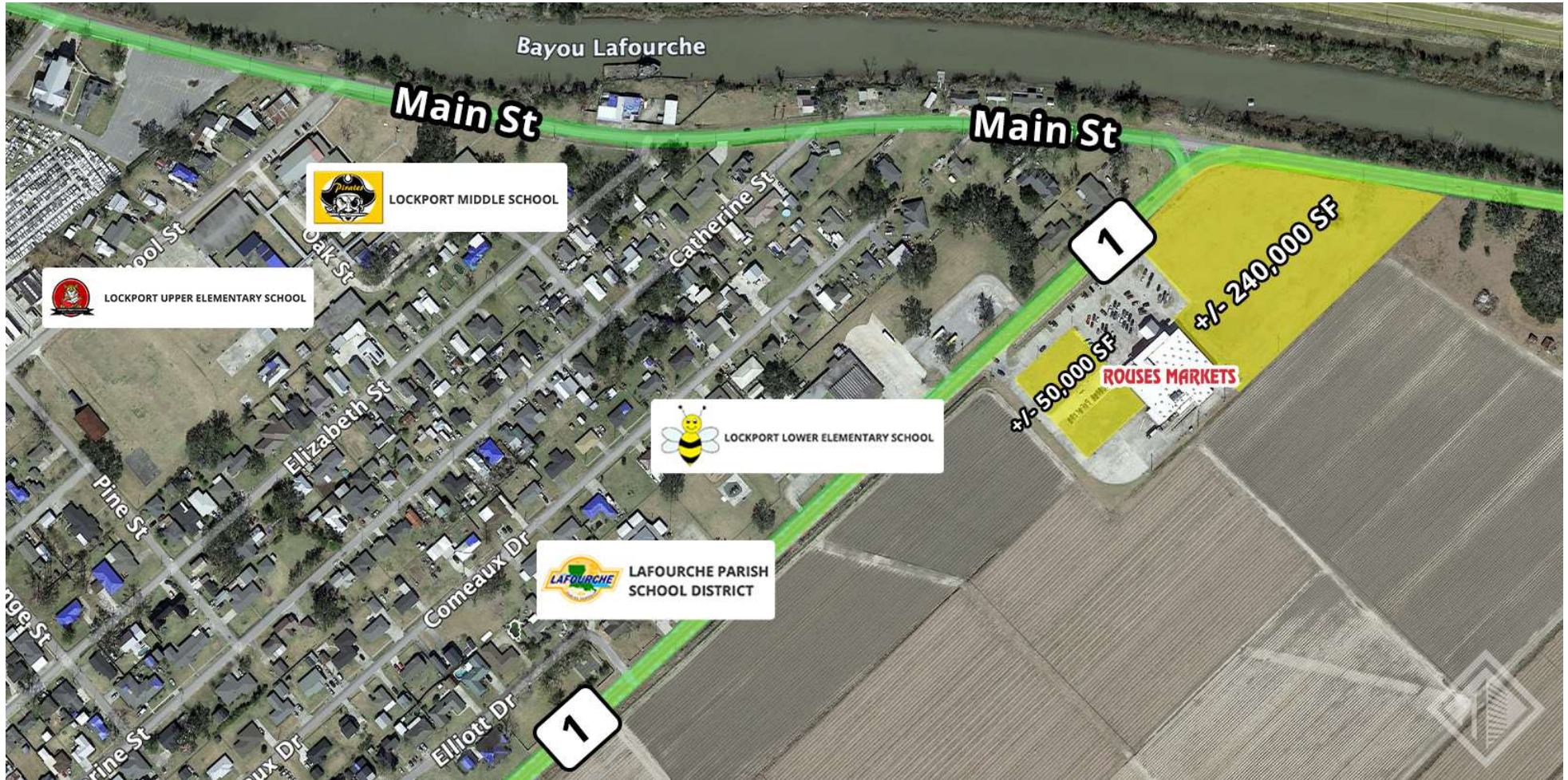
# LOCKPORT ROUSES MARKETS OUTPARCELS

1428 Crescent Avenue, Lockport, LA 70374

MATT EATON, CCIM • PARTNER  
OFFICE: 504.414.0703  
MOBILE: 504.339.2136  
matt@matteatonccim.com

MARTIN O. MILLER III, CCIM, SIOR • PARTNER  
OFFICE: 504.414.0703  
MOBILE: 504.616.5700  
momiller@ccim.net

LOCKPORT LOWER ELEMENTARY SCHOOL



LAND FOR SALE

AERIAL



SOUTHEAST  
COMMERCIAL  
REAL ESTATE



# LOCKPORT ROUSES MARKETS OUTPARCELS

1428 Crescent Avenue, Lockport, LA 70374

MATT EATON, CCIM • PARTNER  
OFFICE: 504.414.0703  
MOBILE: 504.339.2136  
matt@matteatonccim.com

MARTIN O. MILLER III, CCIM, SIOR • PARTNER  
OFFICE: 504.414.0703  
MOBILE: 504.616.5700  
momiller@ccim.net



LAND FOR SALE

AERIAL

SOUTHEAST COMMERCIAL REAL ESTATE | 2310 19th Street Gulfport, MS 39501 | <https://southeastcre.com>



SOUTHEAST  
COMMERCIAL  
REAL ESTATE



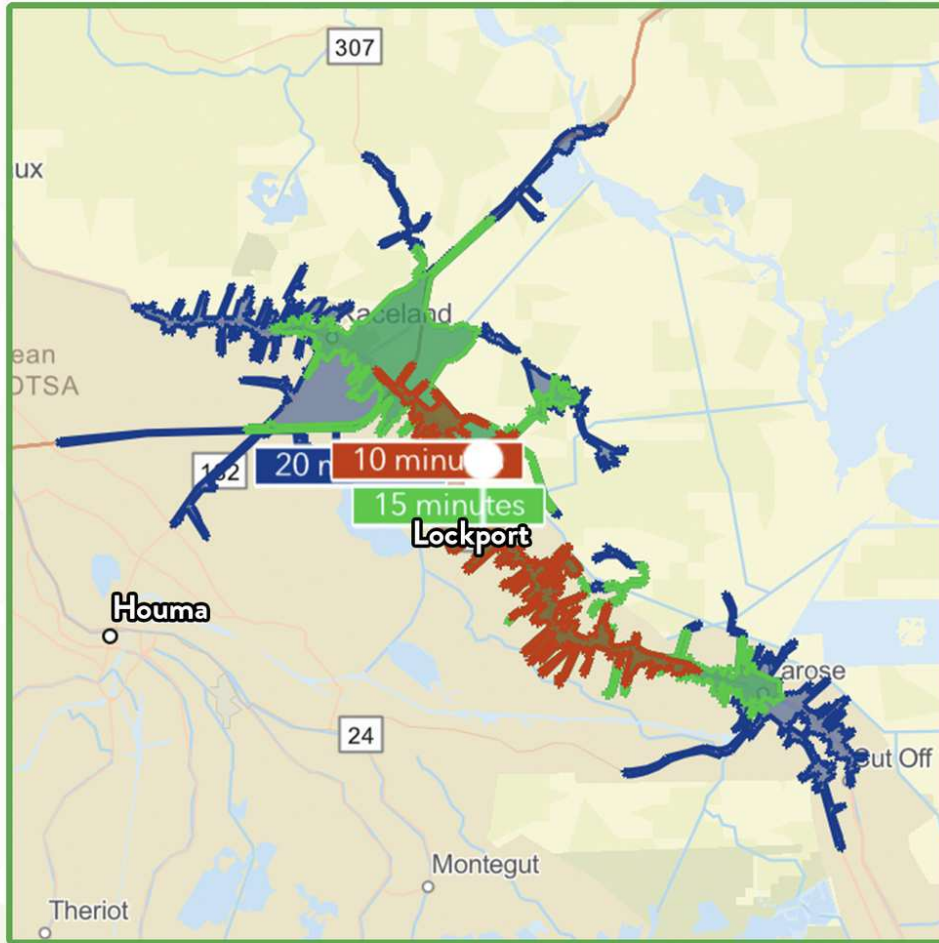
# LOCKPORT ROUSES MARKETS OUTPARCELS

1428 Crescent Avenue, Lockport, LA 70374

MATT EATON, CCIM • PARTNER  
OFFICE: 504.414.0703  
MOBILE: 504.339.2136  
matt@matteatonccim.com

MARTIN O. MILLER III, CCIM, SIOR • PARTNER  
OFFICE: 504.414.0703  
MOBILE: 504.616.5700  
momiller@ccim.net

LOCKPORT LOWER ELEMENTARY SCHOOL



**\$74,191**

Average Household Income within 20 minutes of site.



**39.7**

Median Age

Within 20 minutes of site.



**8,338**

Number of housing units within 20 minutes of site.

### 2023 Demographics

#### Population

#### Average HH Income

#### 10 Minutes

5,840

\$74,837

#### 15 Minutes

12,021

\$76,098

#### 20 Minutes

19,839

\$74,191

### 2028 Projections

#### Population

#### Average HH Income

#### 10 Minutes

5,730

\$85,133

#### 15 Minutes

11,814

\$86,895

#### 20 Minutes

19,553

\$84,197

### Travel Time to Site

- 10 Minutes
- 15 Minutes
- 20 Minutes

LAND FOR SALE

## AREA DEMOGRAPHICS



**SOUTHEAST  
COMMERCIAL**  
REAL ESTATE