



# HOUMA BIG BOX SPACE FOR LEASE

5818 W Main St, Houma, LA 70360

MATT EATON, CCIM • PARTNER  
OFFICE: 504.414.0703  
MOBILE: 504.339.2136  
matt@matteatonccim.com

MARTIN O. MILLER III, CCIM, SIOR • PARTNER  
OFFICE: 504.414.0703  
MOBILE: 504.616.5700  
momiller@ccim.net



## PROPERTY DESCRIPTION

Southeast Commercial is pleased to offer an excellent opportunity for a high-profile location next door to the largest Louisiana grocer, Rouses Markets. Rouses Markets is in the middle of completing a development of a new multimillion-dollar center next door and will be vacating this 67,000 SF space, making it available for another large retailer to come in.

This site boasts excellent visibility with ample frontage on Martin Luther King Jr. Blvd, which is Houma's main retail corridor. This property is on a hard corner, with traffic counts of +/- 34,000 VPD. National retailers located within blocks of this center include: Walmart Supercenter, Sam's Club, The Home Depot, Old Navy, Lowe's, Best Buy, Bed Bath & Beyond, Shoe Carnival and many more.

Available Spaces will range from 10,000 SF - 67,000 SF.

## OFFERING SUMMARY

Lease Rate:	\$14.00-16.00 SF (Annually)
Available SF:	10,000 - 67,000 SF
Lease Type:	NNN

## RETAIL PROPERTY FOR LEASE

### PROPERTY SUMMARY





# HOUMA BIG BOX SPACE FOR LEASE

5818 W Main St, Houma, LA 70360

MATT EATON, CCIM • PARTNER  
OFFICE: 504.414.0703  
MOBILE: 504.339.2136  
matt@matteatonccim.com

MARTIN O. MILLER III, CCIM, SIOR • PARTNER  
OFFICE: 504.414.0703  
MOBILE: 504.616.5700  
momiller@ccim.net



RETAIL PROPERTY FOR LEASE

AERIAL MAP



SOUTHEAST  
COMMERCIAL  
REAL ESTATE



# HOUMA BIG BOX SPACE FOR LEASE

5818 W Main St, Houma, LA 70360

MATT EATON, CCIM • PARTNER  
OFFICE: 504.414.0703  
MOBILE: 504.339.2136  
matt@matteatonccim.com

MARTIN O. MILLER III, CCIM, SIOR • PARTNER  
OFFICE: 504.414.0703  
MOBILE: 504.616.5700  
momiller@ccim.net



RETAIL PROPERTY FOR LEASE

ADDITIONAL PHOTOS

SOUTHEAST COMMERCIAL REAL ESTATE | 2310 19th Street Gulfport, MS 39501 | <https://southeastcre.com>



SOUTHEAST  
COMMERCIAL  
REAL ESTATE

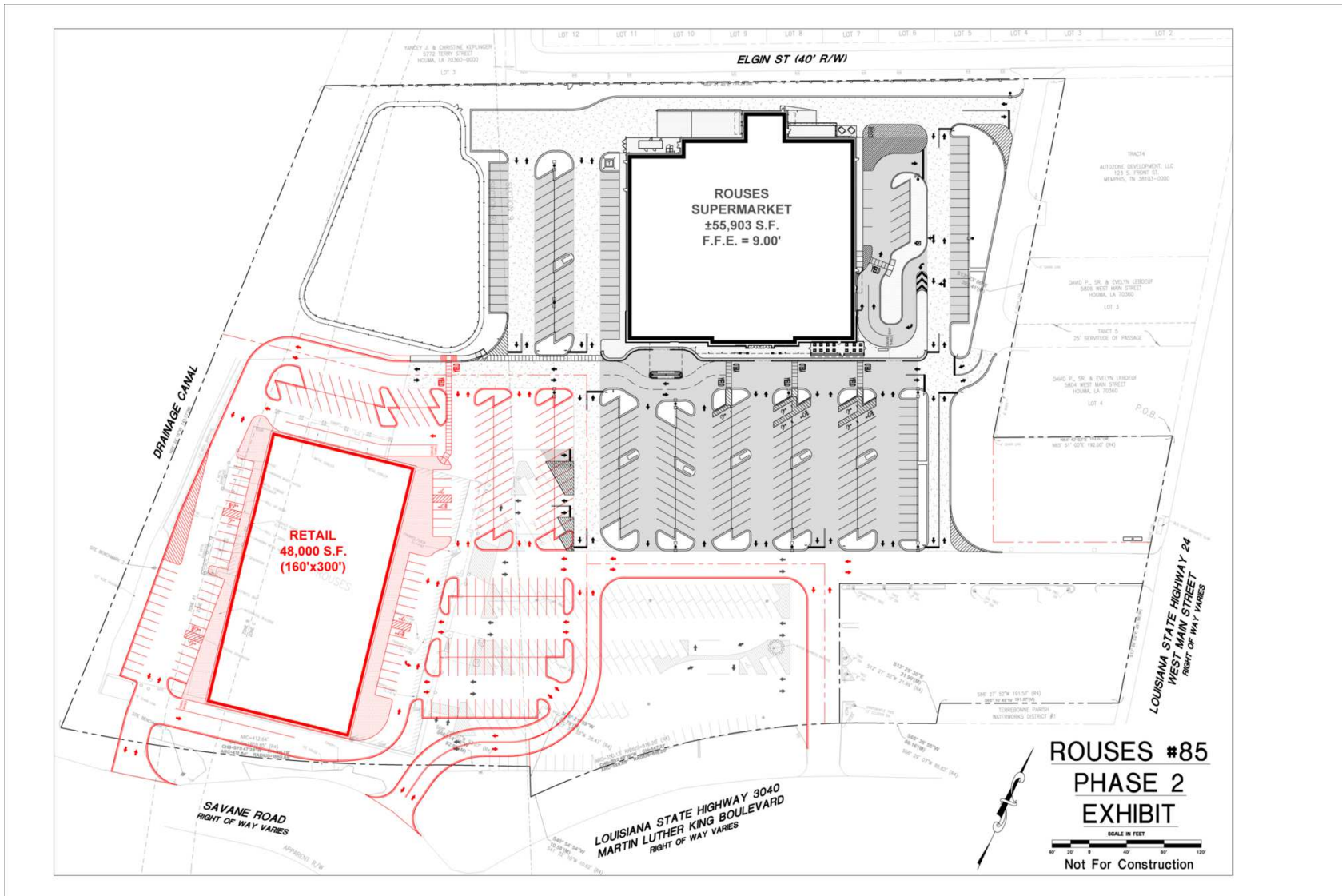


# HOUMA BIG BOX SPACE FOR LEASE

5818 W Main St, Houma, LA 70360

MATT EATON, CCIM • PARTNER  
OFFICE: 504.414.0703  
MOBILE: 504.339.2136  
matt@matteatonccim.com

MARTIN O. MILLER III, CCIM, SIOR • PARTNER  
OFFICE: 504.414.0703  
MOBILE: 504.616.5700  
momiller@ccim.net



RETAIL PROPERTY FOR LEASE

SITE PLAN





# HOUMA BIG BOX SPACE FOR LEASE

5818 W Main St, Houma, LA 70360

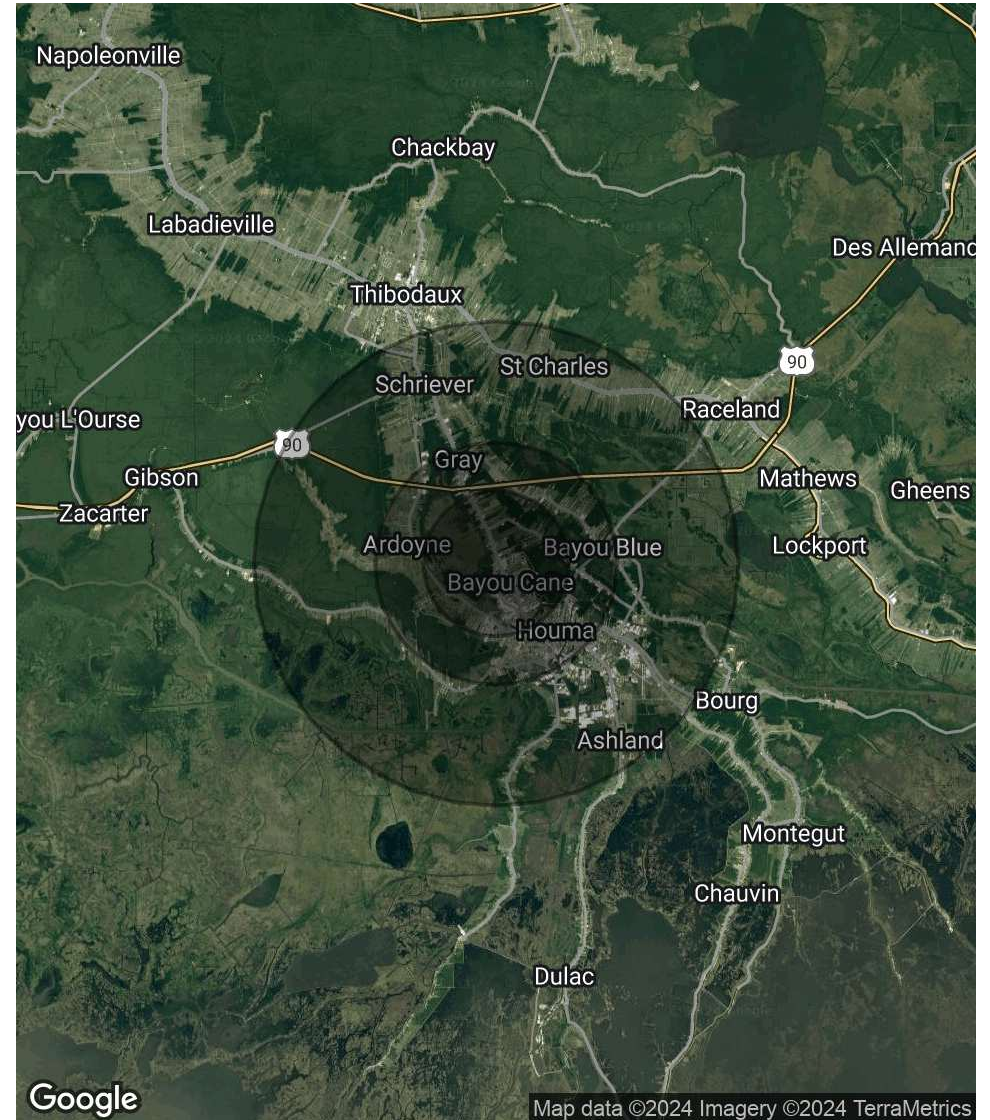
MATT EATON, CCIM • PARTNER  
OFFICE: 504.414.0703  
MOBILE: 504.339.2136  
matt@matteatonccim.com

MARTIN O. MILLER III, CCIM, SIOR • PARTNER  
OFFICE: 504.414.0703  
MOBILE: 504.616.5700  
momiller@ccim.net

POPULATION	3 MILES	5 MILES	10 MILES
Total Population	27,254	58,627	100,165
Average Age	39	39	39
Average Age (Male)	38	38	38
Average Age (Female)	40	40	40

HOUSEHOLDS & INCOME	3 MILES	5 MILES	10 MILES
Total Households	10,664	22,945	38,302
# of Persons per HH	2.6	2.6	2.6
Average HH Income	\$94,971	\$93,111	\$90,738
Average House Value	\$267,336	\$267,519	\$257,047

Demographics data derived from AlphaMap



RETAIL PROPERTY FOR LEASE

## DEMOGRAPHICS MAP & REPORT



SOUTHEAST  
COMMERCIAL  
REAL ESTATE