

THE
PLAZA

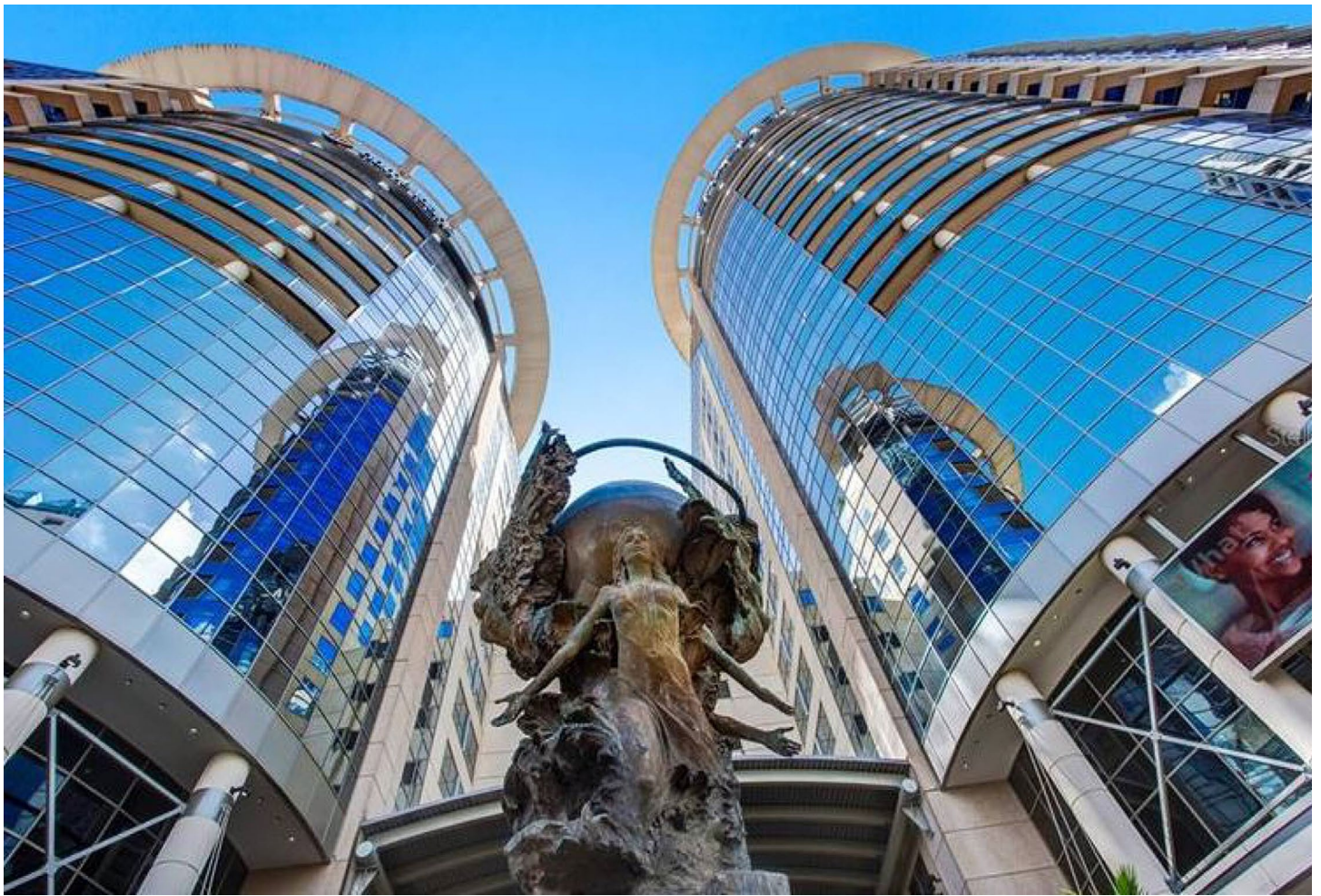
LOCATED IN THE HEART OF DOWNTOWN

SUITE 2030/2050/2070

9,928 RSF

FOR LEASE





CLASS-A DEVELOPMENT

The Plaza Condo is located in the heart of Orlando's Central Business District. There are plenty of restaurants within walking distance as well as access to businesses located in Downtown Orlando.

SUITE	RSF
2030S 2050S 2070S	9,928

PROPERTY FEATURES

- Sleek, modern 'Tech' aesthetic
- Spacious open work areas
- Numerous conference rooms and private offices
- Expansive kitchen and break area
- On-site retail, restaurants, and 12 cinema theater
- 24/7 HVAC & Security

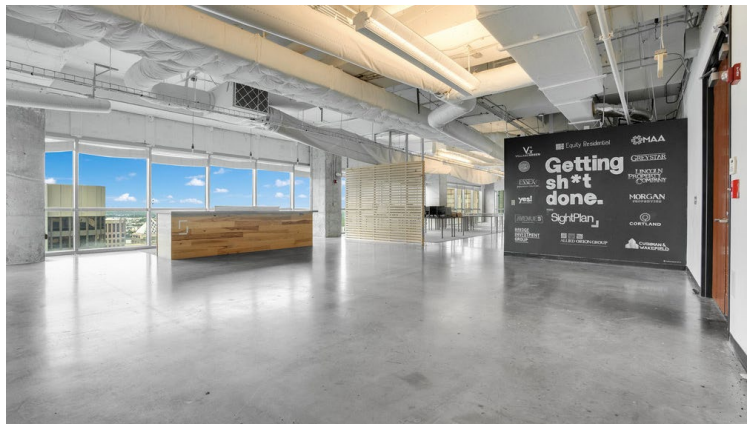
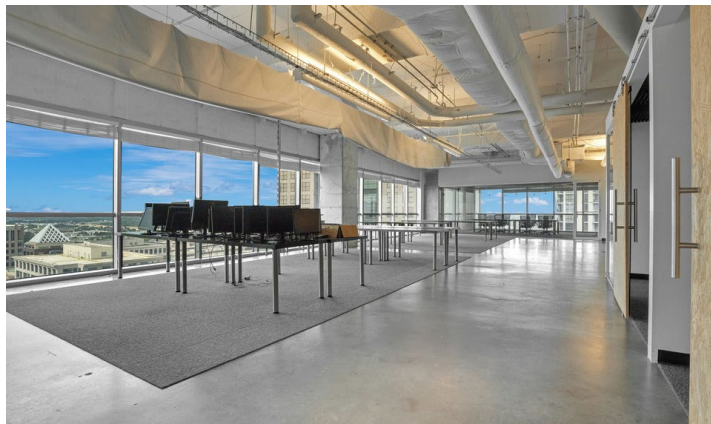
FOR MORE INFORMATION:

ROGER SODERSTROM JR | 407.617.2830 | ROGER@STLRINGINT.COM
Managing Broker

JOHN KURTZ | 407.864.9488 | JKURTZ@STIRLINGIRE.COM
Commercial and Development Properties

STIRLING | **INTERNATIONAL**
REAL ESTATE

2030/2050/2070
SOUTH TOWER
9,928 RSF



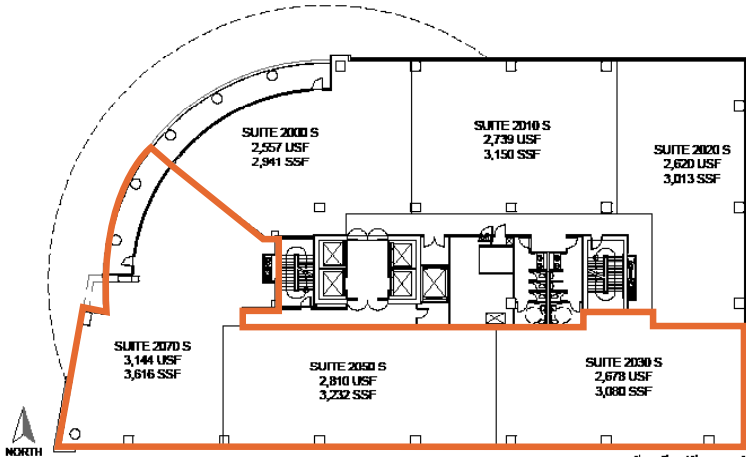
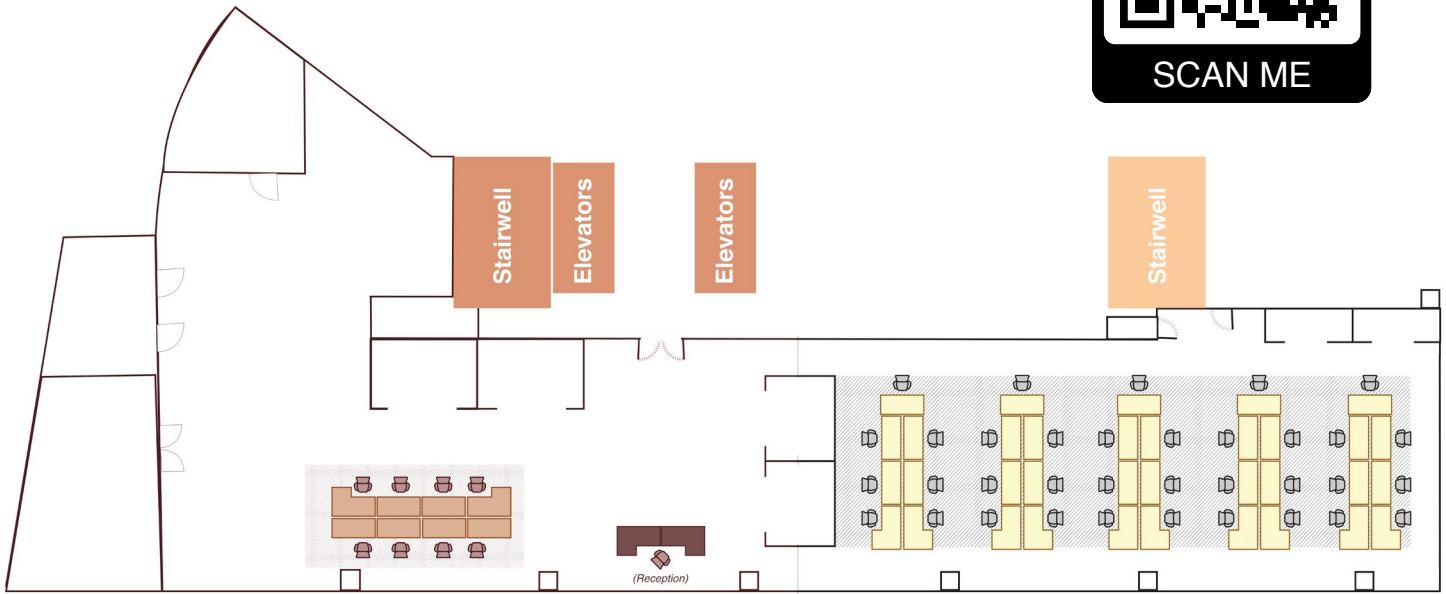


PLAZA 2030/2050/2070

- 9,928 Sq. Ft. of premium office space
- Sleek, modern 'Tech' aesthetic
- Spacious open work areas
- Numerous conference rooms and private offices
- Expansive kitchen and break area
- Semi-private oversized balcony
- Stunning views from the 20th floor
- Comprises combined suites 2030, 2050, and 2070
- Direct access from the elevator landing

Lease Rate: \$28 RSF - MG

CLICK FOR VIRTUAL TOUR



Disclaimer: Offering is subject to errors, omission, prior sale or withdrawal without notice. Plaza unit and building information, including sizes, pricing, property features, terms, availability and amenities, are subject to change, prior sale or withdrawal at any time without notice or obligation. Drawings, photographs, renderings, video, scale models, square footages, floor plans, elevations, features, colors and sizes are approximate for presentation purposes only and may vary from the homes as built. Home prices refer to the base price of the house and do not include options or premiums, unless otherwise indicated for a specific home. Nothing printed or on the website should be construed as legal, accounting or tax advice.

"The Orlando region is No. 1 in the nation for job growth for the fourth consecutive year. According to the Bureau of Labor Statistics, the Orlando-Kissimmee-Sanford metropolitan statistical area (MSA) continued its trajectory as the fastest growing job market in the country for 2018."



Sunrail, Church Station



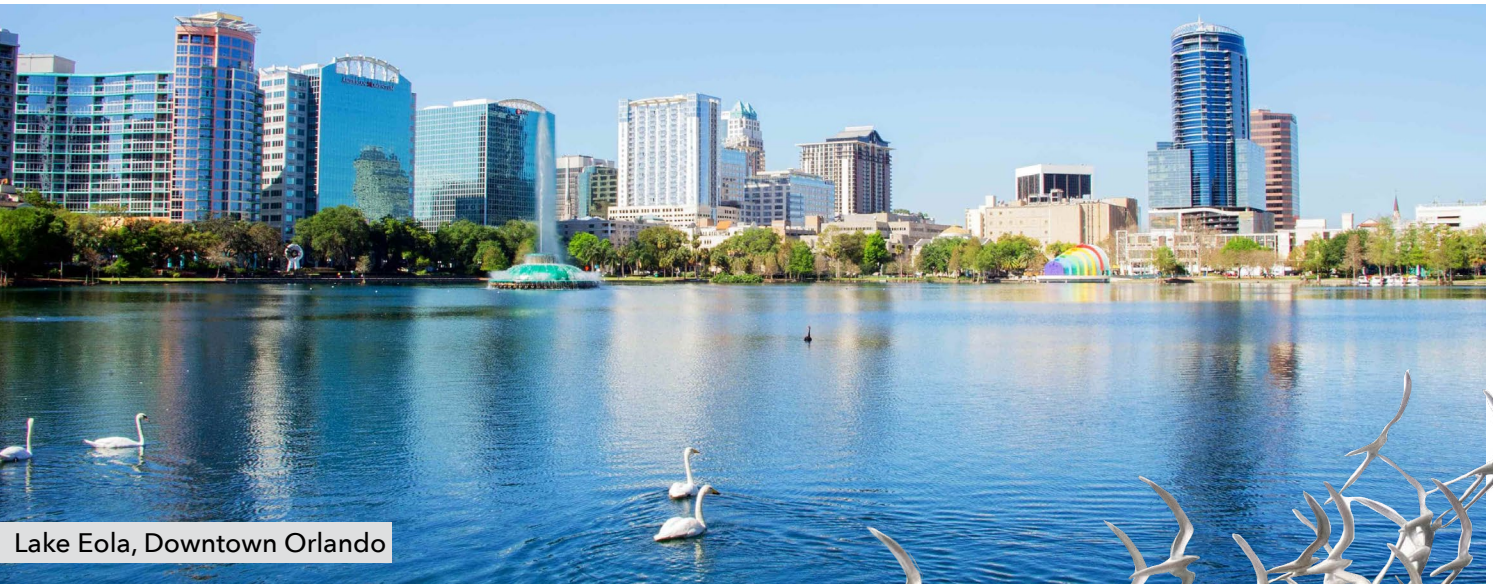
Amway Center



Dr. Phillips Performing Arts Center

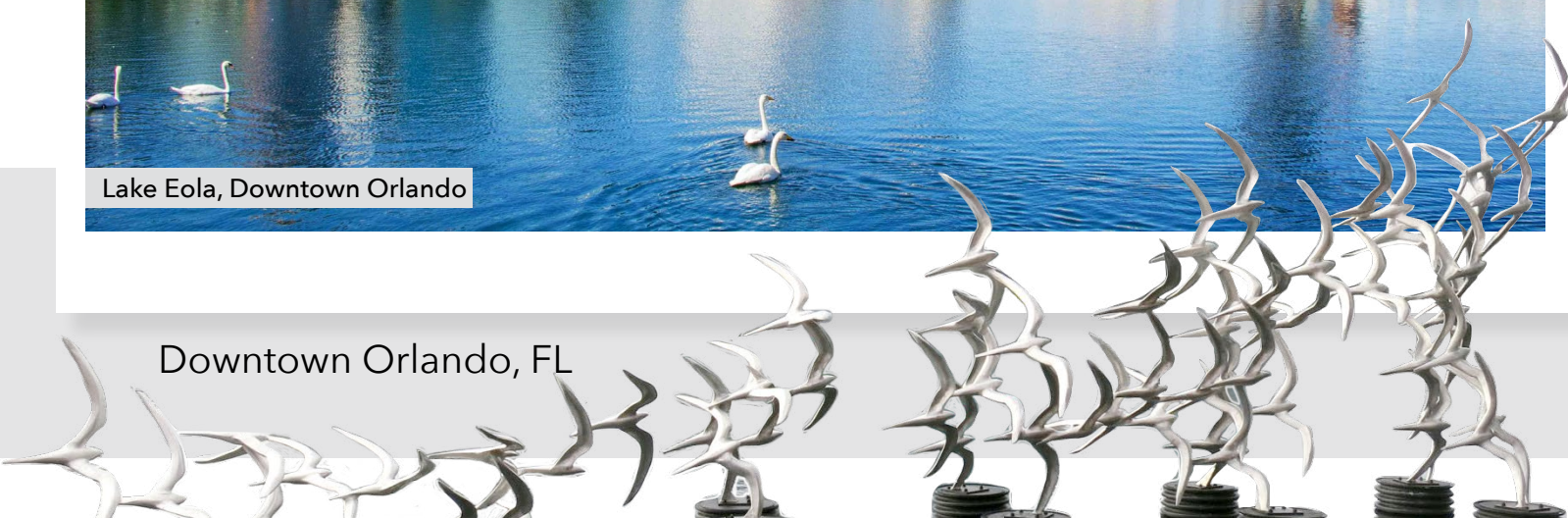


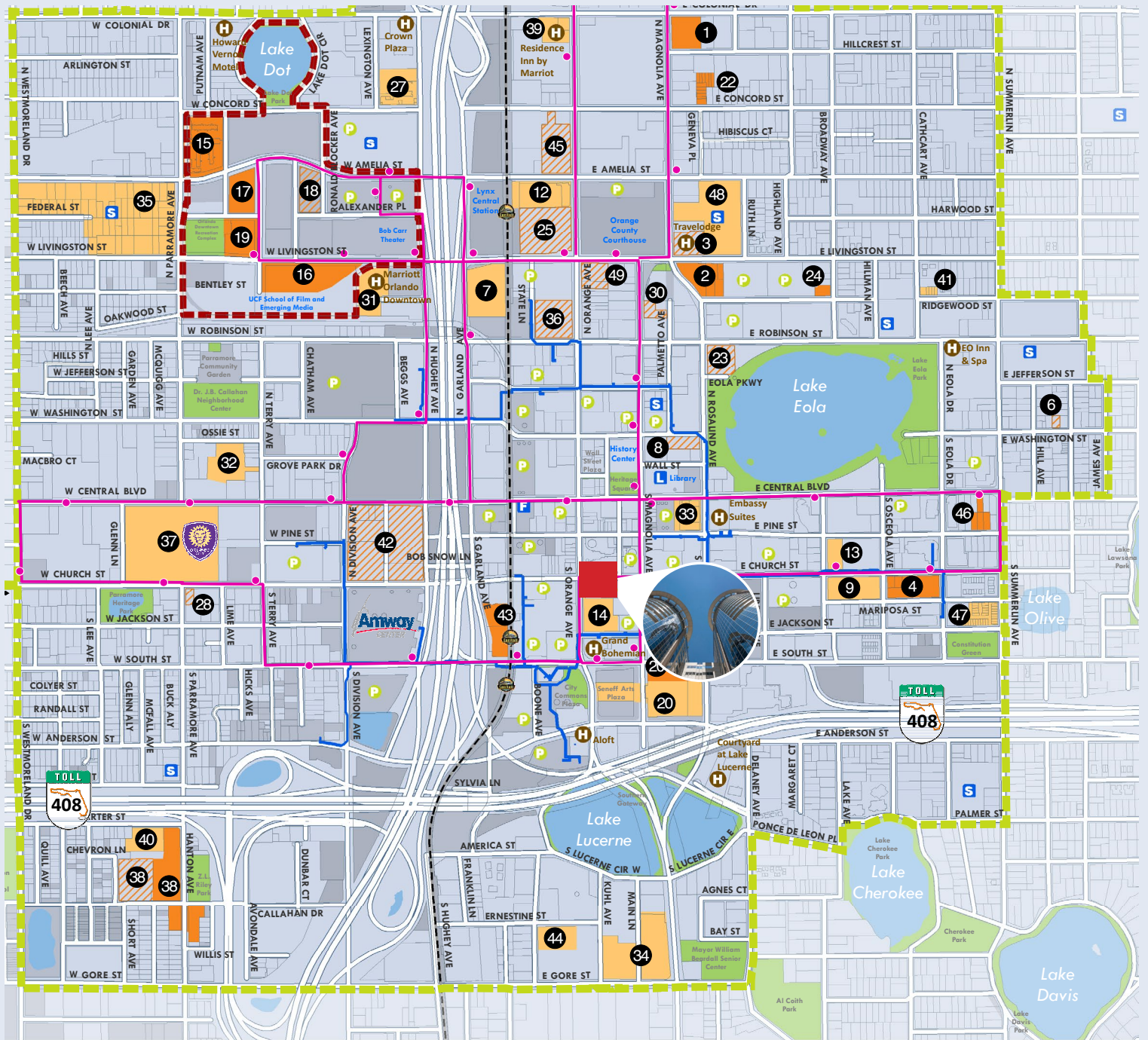
Orlando Soccer Stadium



Lake Eola, Downtown Orlando

Downtown Orlando, FL





- | | | | |
|---------------------------|--|--|--|
| 1. 107 Hillcrest | 13. Citi Tower | 20. Citrus Center | Improvements |
| 2. 333 North Rosalind | 14. Citrus Center | Improvements | 27. Creative Village - Amelia Court |
| 3. 409 North Magnolia | Improvements | 21. Creative Village - Amelia Court | 28. Creative Village - Dr. Phillips Academic Commons |
| 4. 520 East | 15. Creative Village - Amelia Court | 22. Creative Village - Dr. Phillips Academic Commons | 29. Creative Village - Parcel M Apartments |
| 5. 800 North Orange | 16. Creative Village - Dr. Phillips Academic Commons | 23. Creative Village - Parcel M Apartments | 30. Creative Village - Parcel U Apartments |
| 6. 811 East Washington | 17. Creative Village - Parcel M Apartments | 24. Creative Village - Parcel U Apartments | |
| 7. Ace Café | 18. Creative Village - Parcel U Apartments | 25. Citi Tower | |
| 8. Cambria Suites Hotel | 19. Citi Tower | 26. Citrus Center | |
| 9. Camden Thornton Park | | | |
| 10. Camping World Stadium | | | |
| 11. Camden North Quarter | | | |
| 12. Central Station | | | |



THE
PLAZA



Lake Eola, Downtown Orlando



Roger Soderstrom Jr.

Managing Broker
407.617.2830
roger@stirlingint.com

John Kurtz

Commercial and Development Properties
407.864.9488
jkurtz@stirlingire.com