 **JLL** SEE A BRIGHTER WAY

For lease

Ground Lease Opportunity
in San Sebastián

property.jll.com/en-pr

About the site

~4 acres of land for ground lease on high traffic commercial road with recent retail (re-)developments next door, such as a new Kia car dealership and the repurposing of the former Sears retail space. Double access to the lot from both PR 111 and PR 125.

PROPERTY SUMMARY	
ADDRESS	PR-111 San Sebastián, PR
LOCATION	18.352122, -67.017242
PROPERTY TYPE	Land
LOT SIZE	~4 acres
PARCEL NUMBER	099-000-009-54 099-068-505-07 099-068-505-06
ZONING	UR

Aerial



Gallery

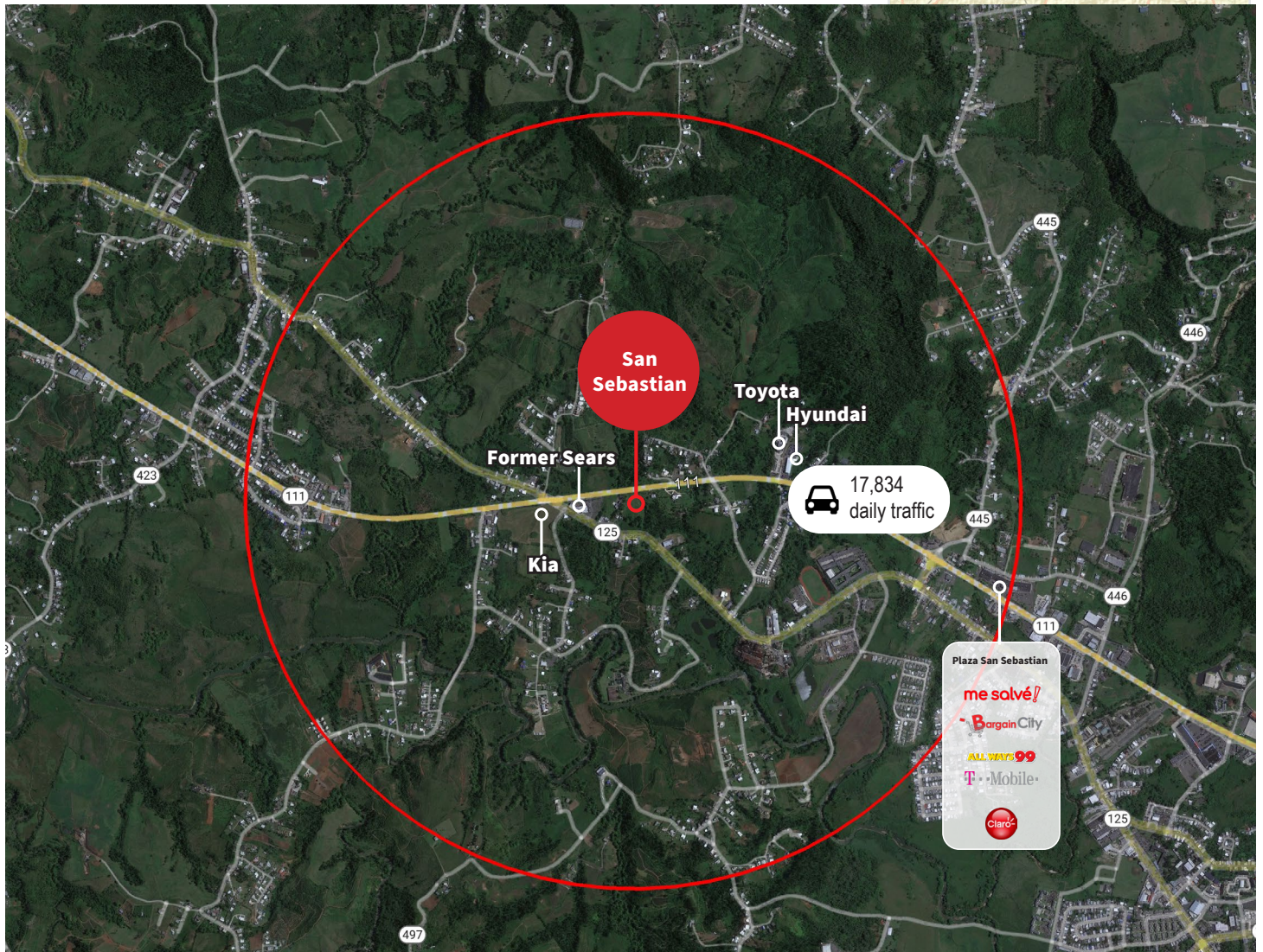


Location highlights

The property is located on PR-111, in a commercial area with a daily traffic count of 17,834. It is located within 1 mile of the Toyota, Kia and Hyundai dealerships and the Plaza San Sebastian Shopping Center. Major retailers of the shopping center are MeSalve, Bargain City, Always 99, among others. It is also located within the vicinity of the former Sears building, a space that is reopening with a new major retailer.

Demographics	1-mile	3-mile	5-mile
Population	1,903	22,624	41,037
Households	728	8,109	14,571
Median HH Income	\$13,929	\$11,895	\$11,607

Source: Esri, 2021



Tom Provost
 Transaction Advisor - Lic. # C-22607
 Puerto Rico
 +1 787-221-6660
tom.provost@jll.com

Exclusively listed by:
 JLL Puerto Rico Realty & Co., S. En C.
 License Number: E-297
 +1 787 777 5800
 27 González Giusti Street Suite 101,
 Guaynabo PR 00968
www.us.jll.com/puerto-rico

Although information has been obtained from sources deemed reliable, JLL does not make any guarantees, warranties or representations, express or implied, as to the completeness or accuracy as to the information contained herein. Any projections, opinions, assumptions or estimates used are for example only. There may be differences between projected and actual results, and those differences may be material. JLL does not accept any liability for any loss or damage suffered by any party resulting from reliance on this information. If the recipient of this information has signed a confidentiality agreement with JLL regarding this matter, this information is subject to the terms of that agreement. ©2023. Jones Lang LaSalle IP, Inc. All rights reserved.